

Home data report

12233 Joplin St, Brighton, CO, US



**Total Area: 2085 sq. ft**

Basement: 5 sq. ft, 1st Floor: 913 sq. ft, 2nd Floor: 1167 sq. ft

Excluded: Basement 845 sq. ft, Garage 397 sq. ft, Deck 226 sq. ft, Walls: 229 sq. ft

## Property summary

 **3** Floors

 **3** Bedrooms

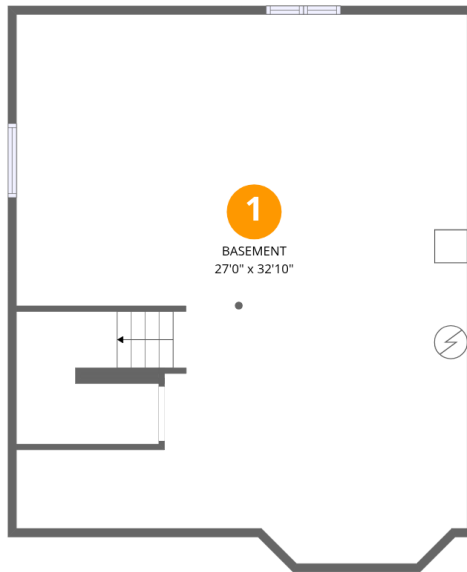
 **2** Bathrooms

Home data report

**12233 Joplin St, Brighton, CO, US**

 **1**  
Half baths

 **1**  
Garages



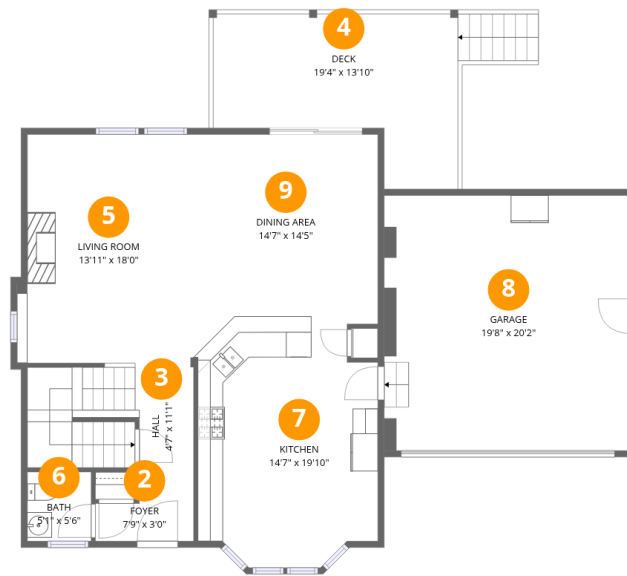
## Room dimensions

Floor 1 Below grade

Total: 5sqft

Excluded: 845sqft

#		Dimensions	sqft	Counted as living area
1	Basement	27'0" x 32'10"	836 sq. ft	No



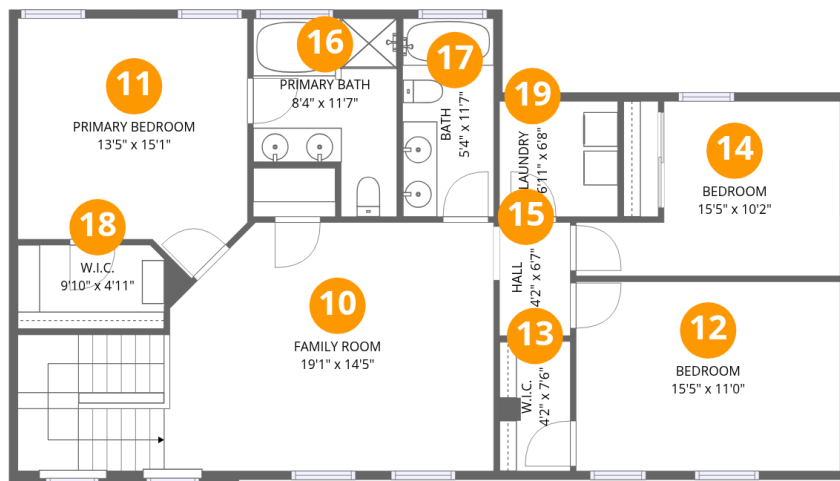
## Room dimensions

Floor 2

Total:913sqft

Excluded: 623sqft

#		Dimensions	sqft	Counted as living area
2	Foyer	7'9" x 3'0"	23 sq. ft	Yes
3	Hall	4'7" x 11'1"	116 sq. ft	Yes
4	Deck	19'4" x 13'10"	226 sq. ft	No
5	Living Room	13'11" x 18'0"	243 sq. ft	Yes
6	Bath	5'1" x 5'6"	28 sq. ft	Yes
7	Kitchen	14'7" x 19'10"	263 sq. ft	Yes
8	Garage	19'8" x 20'2"	397 sq. ft	No
9	Dining Area	14'7" x 14'5"	210 sq. ft	Yes



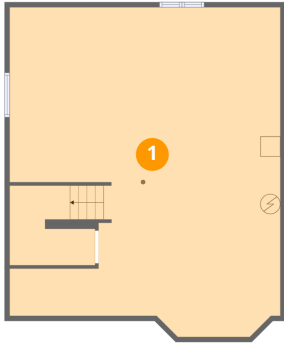
## Room dimensions

Floor 3

Total:1167sqft Excluded: 0sqft

#		Dimensions	sqft	Counted as living area
10	Family Room	19'1" x 14'5"	334 sq. ft	Yes
11	Primary Bedroom	13'5" x 15'1"	177 sq. ft	Yes
12	Bedroom	15'5" x 11'0"	169 sq. ft	Yes
13	W.I.C.	4'2" x 7'6"	31 sq. ft	Yes
14	Bedroom	15'5" x 10'2"	120 sq. ft	Yes
15	Hall	4'2" x 6'7"	27 sq. ft	Yes
16	Primary Bath	8'4" x 11'7"	80 sq. ft	Yes
17	Bath	5'4" x 11'7"	61 sq. ft	Yes
18	W.I.C.	9'10" x 4'11"	43 sq. ft	Yes
19	Laundry	6'11" x 6'8"	46 sq. ft	Yes

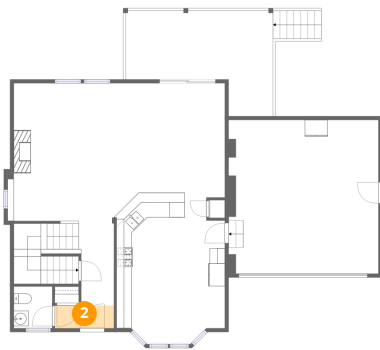
## 1 Floor 1 - Basement



Dimensions: 27'0" x 32'10"  
Area: 836 sq. ft  
Counted as living area: No

Heated: Yes  
Finished: No  
Enclosed: Yes  
Contiguous: Yes  
Permitted: Yes  
Wet space: No  
Addition: No  
Conversion: No

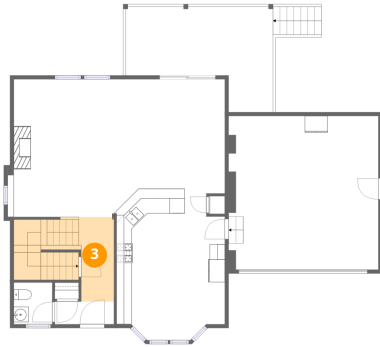
## 2 Floor 2 - Foyer



Dimensions: 7'9" x 3'0"  
Area: 23 sq. ft  
Counted as living area: Yes

Heated: Yes  
Finished: Yes  
Enclosed: Yes  
Contiguous: Yes  
Permitted: Yes  
Wet space: No  
Addition: No  
Conversion: No

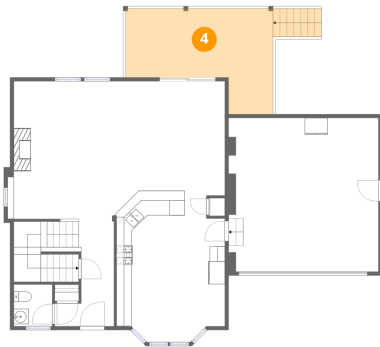
### 3 Floor 2 - Hall



Dimensions: 4'7" x 11'1"  
Area: 116 sq. ft  
Counted as living area: Yes

Heated: Yes  
Finished: Yes  
Enclosed: Yes  
Contiguous: Yes  
Permitted: Yes  
Wet space: No  
Addition: No  
Conversion: No

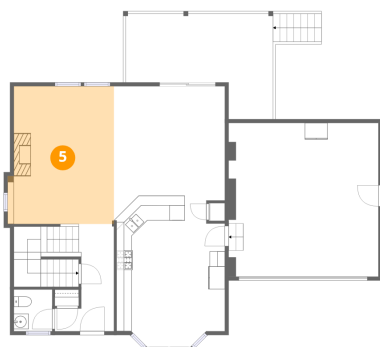
### 4 Floor 2 - Deck



Dimensions: 19'4" x 13'10"  
Area: 226 sq. ft  
Counted as living area: No

Heated: No  
Finished: No  
Enclosed: No  
Contiguous: Yes  
Permitted: Yes  
Wet space: No  
Addition: No  
Conversion: No

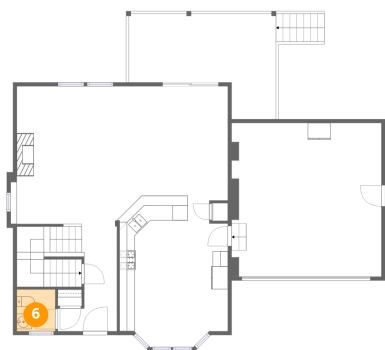
### 5 Floor 2 - Living Room



Dimensions: 13'11" x 18'0"  
Area: 243 sq. ft  
Counted as living area: Yes

Heated: Yes  
Finished: Yes  
Enclosed: Yes  
Contiguous: Yes  
Permitted: Yes  
Wet space: No  
Addition: No  
Conversion: No

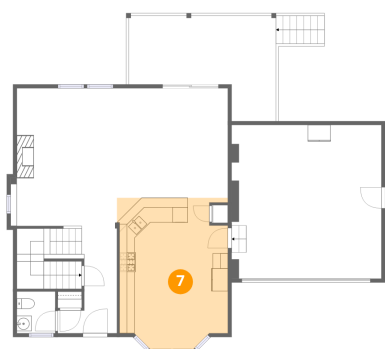
## 6 Floor 2 - Bath



Dimensions: 5'1" x 5'6"  
Area: 28 sq. ft  
Counted as living area: Yes

Heated: Yes  
Finished: Yes  
Enclosed: Yes  
Contiguous: Yes  
Permitted: Yes  
Wet space: Yes  
Addition: No  
Conversion: No

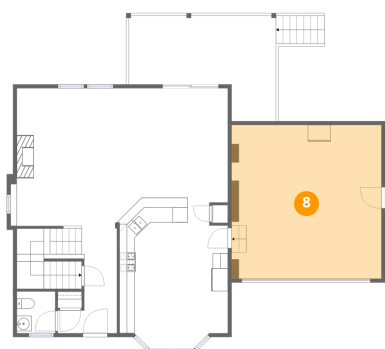
## 7 Floor 2 - Kitchen



Dimensions: 14'7" x 19'10"  
Area: 263 sq. ft  
Counted as living area: Yes

Heated: Yes  
Finished: Yes  
Enclosed: Yes  
Contiguous: Yes  
Permitted: Yes  
Wet space: No  
Addition: No  
Conversion: No

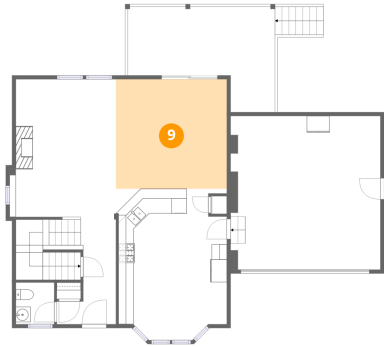
## 8 Floor 2 - Garage



Dimensions: 19'8" x 20'2"  
Area: 397 sq. ft  
Counted as living area: No

Heated: No  
Finished: No  
Enclosed: Yes  
Contiguous: Yes  
Permitted: Yes  
Wet space: No  
Addition: No  
Conversion: No

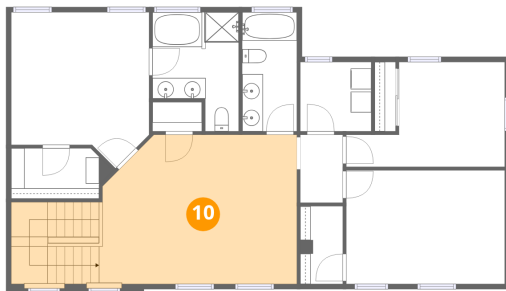
## 9 Floor 2 - Dining Area



Dimensions: 14'7" x 14'5"  
Area: 210 sq. ft  
Counted as living area: Yes

Heated: Yes  
Finished: Yes  
Enclosed: Yes  
Contiguous: Yes  
Permitted: Yes  
Wet space: No  
Addition: No  
Conversion: No

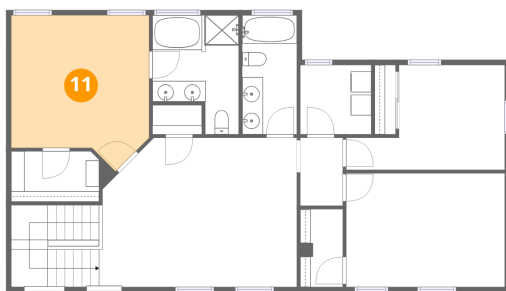
## 10 Floor 3 - Family Room



Dimensions: 19'1" x 14'5"  
Area: 334 sq. ft  
Counted as living area: Yes

Heated: Yes  
Finished: Yes  
Enclosed: Yes  
Contiguous: Yes  
Permitted: Yes  
Wet space: No  
Addition: No  
Conversion: No

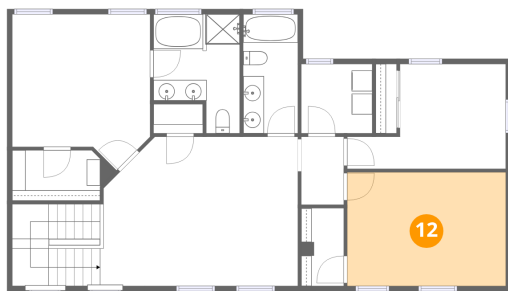
## 11 Floor 3 - Primary Bedroom



Dimensions: 13'5" x 15'1"  
Area: 177 sq. ft  
Counted as living area: Yes

Heated: Yes  
Finished: Yes  
Enclosed: Yes  
Contiguous: Yes  
Permitted: Yes  
Wet space: No  
Addition: No  
Conversion: No

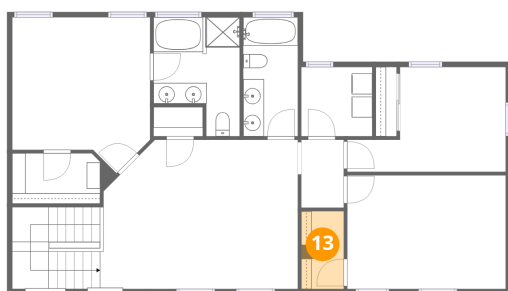
### 12 Floor 3 - Bedroom



Dimensions: 15'5" x 11'0"  
Area: 169 sq. ft  
Counted as living area: Yes

Heated: Yes  
Finished: Yes  
Enclosed: Yes  
Contiguous: Yes  
Permitted: Yes  
Wet space: No  
Addition: No  
Conversion: No

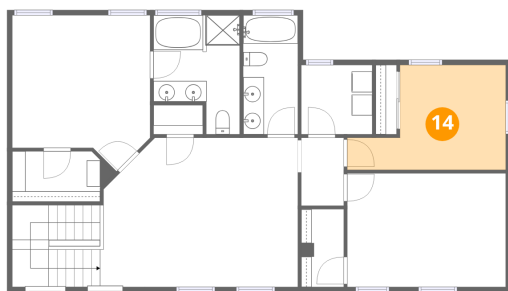
### 13 Floor 3 - W.I.C.



Dimensions: 4'2" x 7'6"  
Area: 31 sq. ft  
Counted as living area: Yes

Heated: Yes  
Finished: Yes  
Enclosed: Yes  
Contiguous: Yes  
Permitted: Yes  
Wet space: No  
Addition: No  
Conversion: No

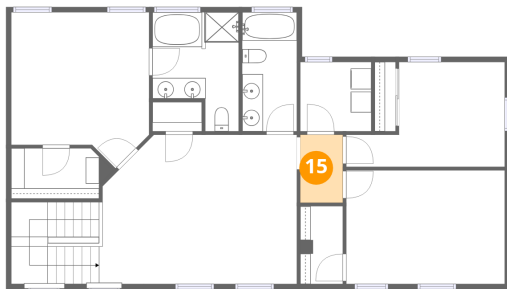
### 14 Floor 3 - Bedroom



Dimensions: 15'5" x 10'2"  
Area: 120 sq. ft  
Counted as living area: Yes

Heated: Yes  
Finished: Yes  
Enclosed: Yes  
Contiguous: Yes  
Permitted: Yes  
Wet space: No  
Addition: No  
Conversion: No

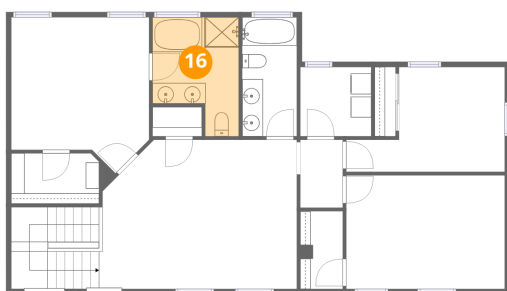
### 15 Floor 3 - Hall



Dimensions: 4'2" x 6'7"  
Area: 27 sq. ft  
Counted as living area: Yes

Heated: Yes  
Finished: Yes  
Enclosed: Yes  
Contiguous: Yes  
Permitted: Yes  
Wet space: No  
Addition: No  
Conversion: No

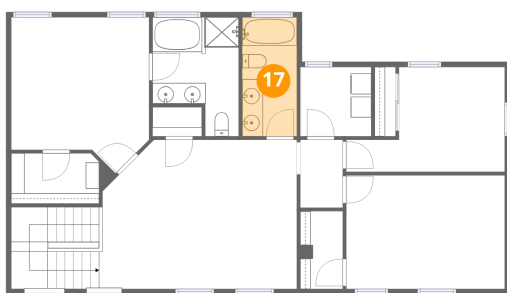
### 16 Floor 3 - Primary Bath



Dimensions: 8'4" x 11'7"  
Area: 80 sq. ft  
Counted as living area: Yes

Heated: Yes  
Finished: Yes  
Enclosed: Yes  
Contiguous: Yes  
Permitted: Yes  
Wet space: Yes  
Addition: No  
Conversion: No

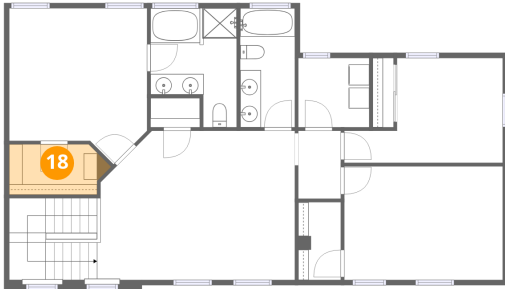
### 17 Floor 3 - Bath



Dimensions: 5'4" x 11'7"  
Area: 61 sq. ft  
Counted as living area: Yes

Heated: Yes  
Finished: Yes  
Enclosed: Yes  
Contiguous: Yes  
Permitted: Yes  
Wet space: Yes  
Addition: No  
Conversion: No

**18** Floor 3 - W.I.C.



Dimensions: 9'10" x 4'11"  
Area: 43 sq. ft  
Counted as living area: Yes

Heated: Yes  
Finished: Yes  
Enclosed: Yes  
Contiguous: Yes  
Permitted: Yes  
Wet space: No  
Addition: No  
Conversion: No

**19** Floor 3 - Laundry



Dimensions: 6'11" x 6'8"  
Area: 46 sq. ft  
Counted as living area: Yes

Heated: Yes  
Finished: Yes  
Enclosed: Yes  
Contiguous: Yes  
Permitted: Yes  
Wet space: No  
Addition: No  
Conversion: No