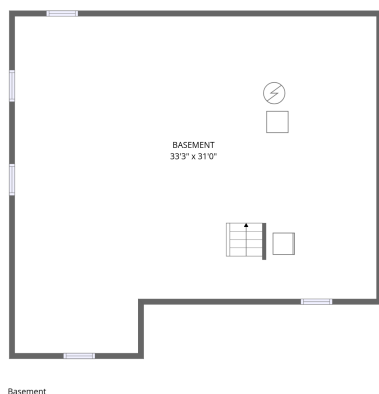
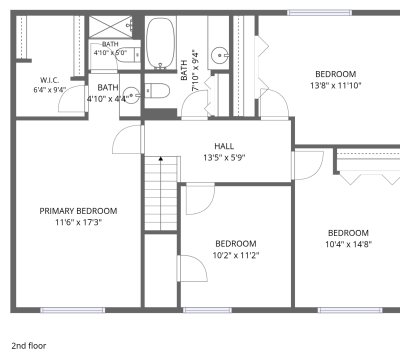
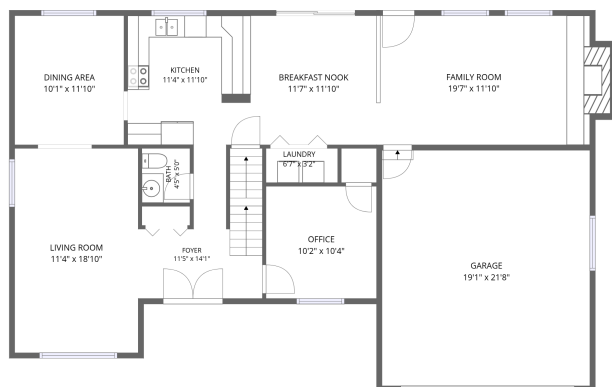


# Home data report

## 9245 W 83rd Pl, Arvada, CO, US



**Total Area: 2123 sq. ft**

Basement: 0 sq. ft, 1st Floor: 1158 sq. ft, 2nd Floor: 965 sq. ft

Excluded: Basement 922 sq. ft, Garage 414 sq. ft, Fireplace 14 sq. ft, Walls: 236 sq. ft

### Property summary


 **3** Floors

 **4** Bedrooms

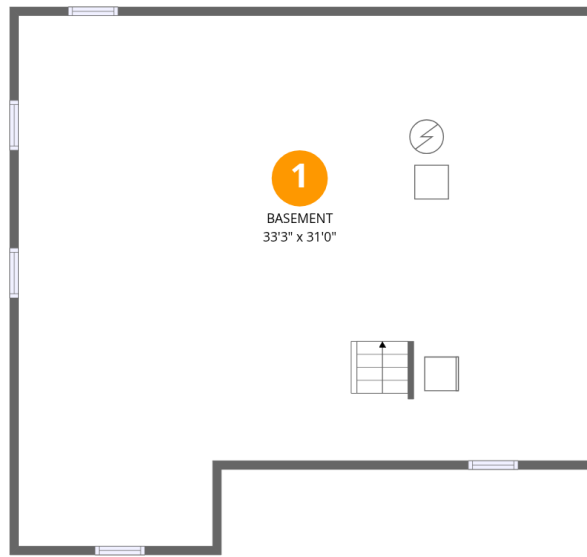
 **2** Bathrooms

Home data report

**9245 W 83rd Pl, Arvada, CO, US**

 **1**  
Half baths

 **1**  
Garages



## Room dimensions

Floor 1 Below grade

Total: 0 sqft

Excluded: 922 sqft

#		Dimensions	sqft	Counted as living area
1	Basement	33'3" x 31'0"	922 sq. ft	No



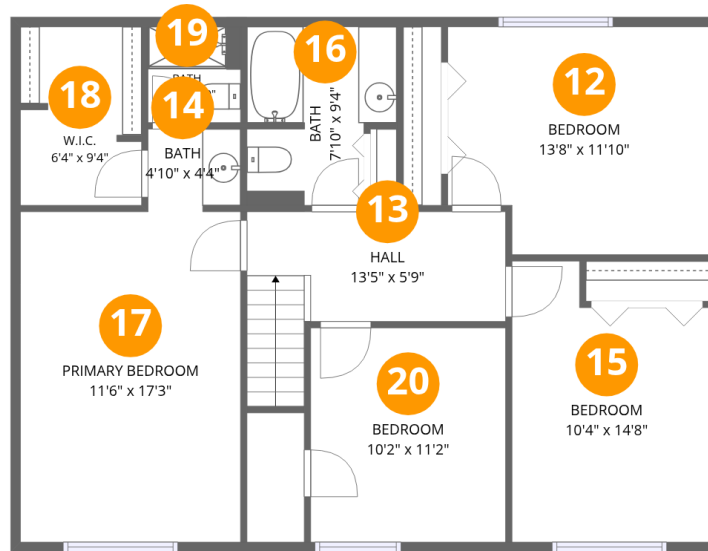
## Room dimensions

Floor 2

Total: 1158sqft

Excluded: 428sqft

#		Dimensions	sqft	Counted as living area
2	Garage	19'1" x 21'8"	414 sq. ft	No
3	Kitchen	11'4" x 11'10"	134 sq. ft	Yes
4	Family Room	19'7" x 11'10"	245 sq. ft	Yes
5	Foyer	11'5" x 14'1"	118 sq. ft	Yes
6	Bath	4'5" x 5'0"	22 sq. ft	Yes
7	Dining Area	10'1" x 11'10"	119 sq. ft	Yes
8	Office	10'2" x 10'4"	105 sq. ft	Yes
9	Breakfast Nook	11'7" x 11'10"	138 sq. ft	Yes
10	Laundry	6'7" x 3'2"	21 sq. ft	Yes
11	Living Room	11'4" x 18'10"	213 sq. ft	Yes



## Room dimensions

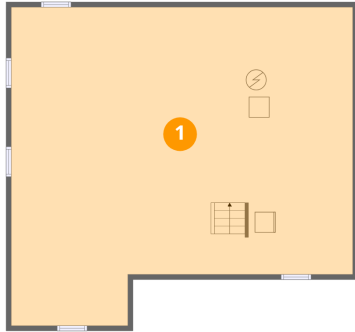
Floor 3

Total: 965 sqft

Excluded: 0 sqft

#		Dimensions	sqft	Counted as living area
12	Bedroom	13'8" x 11'10"	154 sq. ft	Yes
13	Hall	13'5" x 5'9"	90 sq. ft	Yes
14	Bath	4'10" x 4'4"	20 sq. ft	Yes
15	Bedroom	10'4" x 14'8"	135 sq. ft	Yes
16	Bath	7'10" x 9'4"	64 sq. ft	Yes
17	Primary Bedroom	11'6" x 17'3"	198 sq. ft	Yes
18	W.I.C.	6'4" x 9'4"	58 sq. ft	Yes
19	Bath	4'10" x 5'0"	24 sq. ft	Yes
20	Bedroom	10'2" x 11'2"	114 sq. ft	Yes

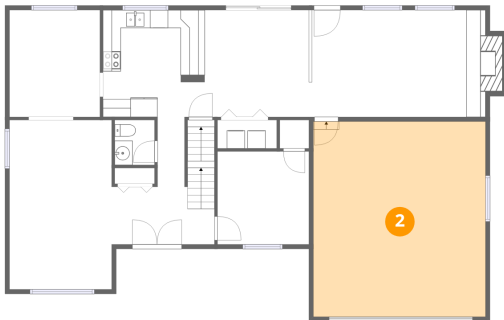
## 1 Floor 1 - Basement



Dimensions: 33'3" x 31'0"  
Area: 922 sq. ft  
Counted as living area: No

Heated: Yes  
Finished: No  
Enclosed: Yes  
Contiguous: Yes  
Permitted: Yes  
Wet space: No  
Addition: No  
Conversion: No

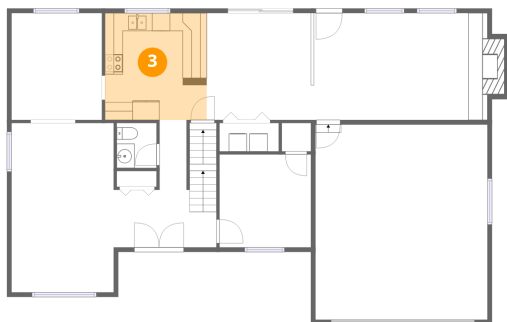
## 2 Floor 2 - Garage



Dimensions: 19'1" x 21'8"  
Area: 414 sq. ft  
Counted as living area: No

Heated: No  
Finished: No  
Enclosed: Yes  
Contiguous: Yes  
Permitted: Yes  
Wet space: No  
Addition: No  
Conversion: No

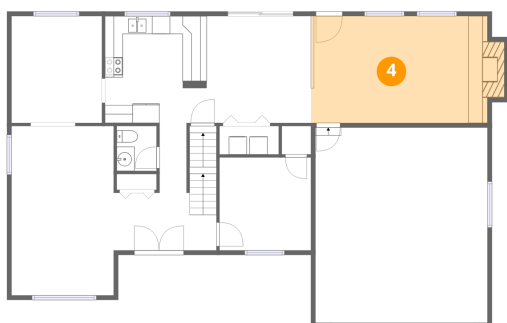
### 3 Floor 2 - Kitchen



Dimensions: 11'4" x 11'10"  
Area: 134 sq. ft  
Counted as living area: Yes

Heated: Yes  
Finished: Yes  
Enclosed: Yes  
Contiguous: Yes  
Permitted: Yes  
Wet space: No  
Addition: No  
Conversion: No

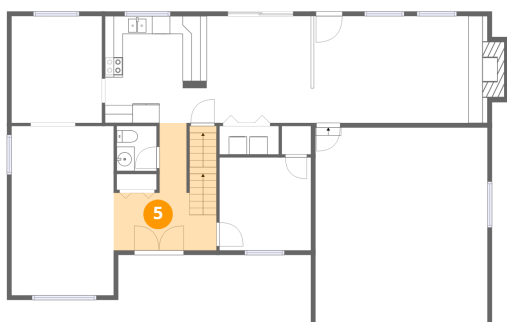
### 4 Floor 2 - Family Room



Dimensions: 19'7" x 11'10"  
Area: 245 sq. ft  
Counted as living area: Yes

Heated: Yes  
Finished: Yes  
Enclosed: Yes  
Contiguous: Yes  
Permitted: Yes  
Wet space: No  
Addition: No  
Conversion: No

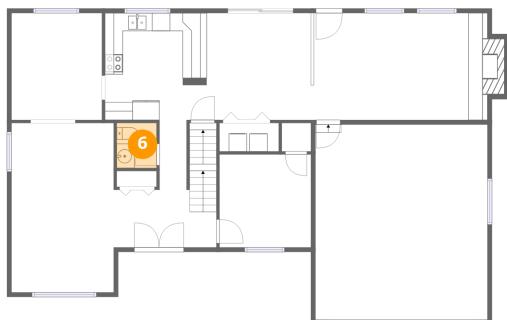
### 5 Floor 2 - Foyer



Dimensions: 11'5" x 14'1"  
Area: 118 sq. ft  
Counted as living area: Yes

Heated: Yes  
Finished: Yes  
Enclosed: Yes  
Contiguous: Yes  
Permitted: Yes  
Wet space: No  
Addition: No  
Conversion: No

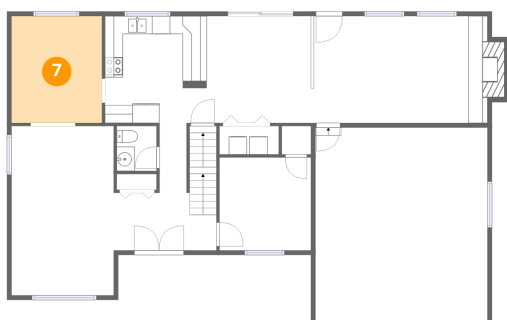
### 6 Floor 2 - Bath



Dimensions: 4'5" x 5'0"  
Area: 22 sq. ft  
Counted as living area: Yes

Heated: Yes  
Finished: Yes  
Enclosed: Yes  
Contiguous: Yes  
Permitted: Yes  
Wet space: Yes  
Addition: No  
Conversion: No

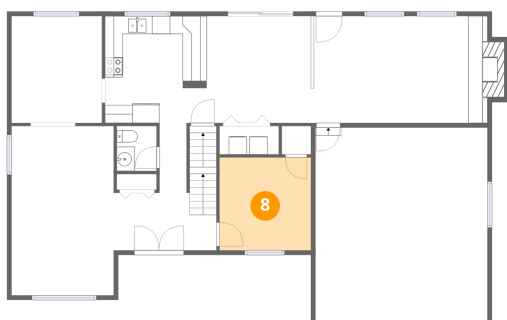
### 7 Floor 2 - Dining Area



Dimensions: 10'1" x 11'10"  
Area: 119 sq. ft  
Counted as living area: Yes

Heated: Yes  
Finished: Yes  
Enclosed: Yes  
Contiguous: Yes  
Permitted: Yes  
Wet space: No  
Addition: No  
Conversion: No

### 8 Floor 2 - Office



Dimensions: 10'2" x 10'4"  
Area: 105 sq. ft  
Counted as living area: Yes

Heated: Yes  
Finished: Yes  
Enclosed: Yes  
Contiguous: Yes  
Permitted: Yes  
Wet space: No  
Addition: No  
Conversion: No

## 9 Floor 2 - Breakfast Nook



Dimensions: 11'7" x 11'10"  
Area: 138 sq. ft  
Counted as living area: Yes

Heated: Yes  
Finished: Yes  
Enclosed: Yes  
Contiguous: Yes  
Permitted: Yes  
Wet space: No  
Addition: No  
Conversion: No

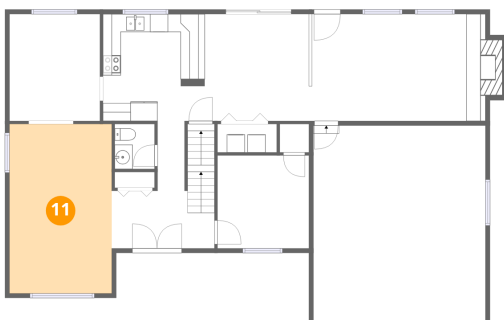
## 10 Floor 2 - Laundry



Dimensions: 6'7" x 3'2"  
Area: 21 sq. ft  
Counted as living area: Yes

Heated: Yes  
Finished: Yes  
Enclosed: Yes  
Contiguous: Yes  
Permitted: Yes  
Wet space: No  
Addition: No  
Conversion: No

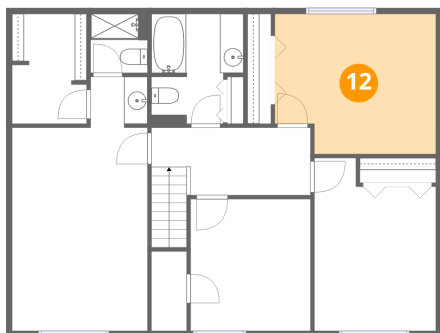
## 11 Floor 2 - Living Room



Dimensions: 11'4" x 18'10"  
Area: 213 sq. ft  
Counted as living area: Yes

Heated: Yes  
Finished: Yes  
Enclosed: Yes  
Contiguous: Yes  
Permitted: Yes  
Wet space: No  
Addition: No  
Conversion: No

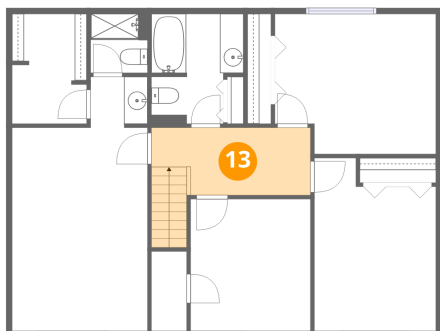
### 12 Floor 3 - Bedroom



Dimensions: 13'8" x 11'10"  
Area: 154 sq. ft  
Counted as living area: Yes

Heated: Yes  
Finished: Yes  
Enclosed: Yes  
Contiguous: Yes  
Permitted: Yes  
Wet space: No  
Addition: No  
Conversion: No

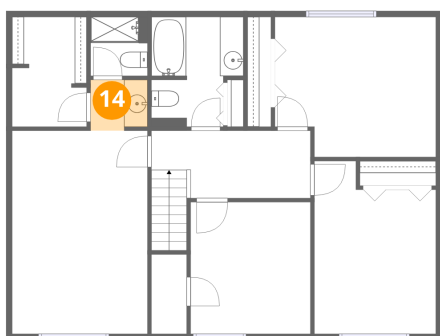
### 13 Floor 3 - Hall



Dimensions: 13'5" x 5'9"  
Area: 90 sq. ft  
Counted as living area: Yes

Heated: Yes  
Finished: Yes  
Enclosed: Yes  
Contiguous: Yes  
Permitted: Yes  
Wet space: No  
Addition: No  
Conversion: No

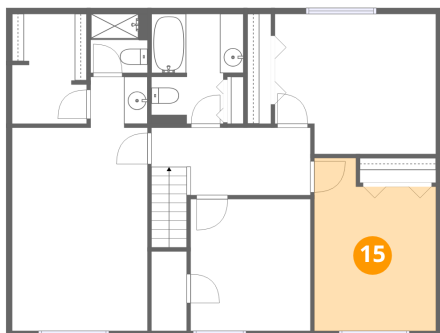
### 14 Floor 3 - Bath



Dimensions: 4'10" x 4'4"  
Area: 20 sq. ft  
Counted as living area: Yes

Heated: Yes  
Finished: Yes  
Enclosed: Yes  
Contiguous: Yes  
Permitted: Yes  
Wet space: Yes  
Addition: No  
Conversion: No

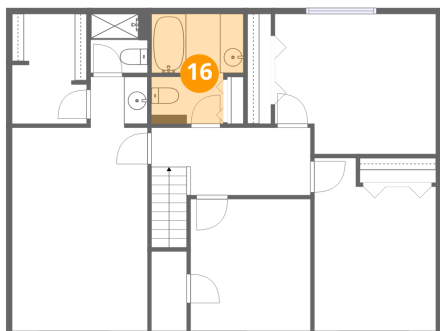
### 15 Floor 3 - Bedroom



Dimensions: 10'4" x 14'8"  
Area: 135 sq. ft  
Counted as living area: Yes

Heated: Yes  
Finished: Yes  
Enclosed: Yes  
Contiguous: Yes  
Permitted: Yes  
Wet space: No  
Addition: No  
Conversion: No

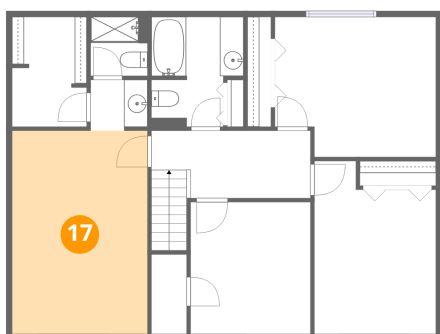
### 16 Floor 3 - Bath



Dimensions: 7'10" x 9'4"  
Area: 64 sq. ft  
Counted as living area: Yes

Heated: Yes  
Finished: Yes  
Enclosed: Yes  
Contiguous: Yes  
Permitted: Yes  
Wet space: Yes  
Addition: No  
Conversion: No

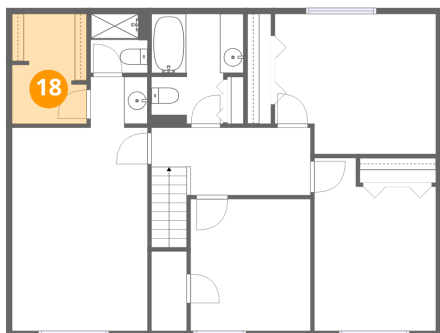
### 17 Floor 3 - Primary Bedroom



Dimensions: 11'6" x 17'3"  
Area: 198 sq. ft  
Counted as living area: Yes

Heated: Yes  
Finished: Yes  
Enclosed: Yes  
Contiguous: Yes  
Permitted: Yes  
Wet space: No  
Addition: No  
Conversion: No

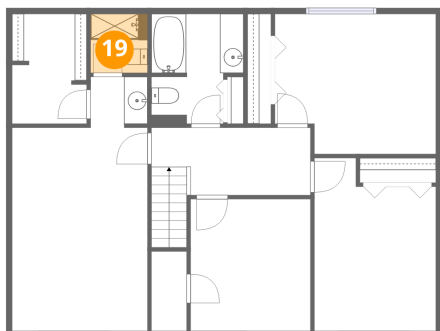
**18** Floor 3 - W.I.C.



Dimensions: 6'4" x 9'4"  
Area: 58 sq. ft  
Counted as living area: Yes

Heated: Yes  
Finished: Yes  
Enclosed: Yes  
Contiguous: Yes  
Permitted: Yes  
Wet space: No  
Addition: No  
Conversion: No

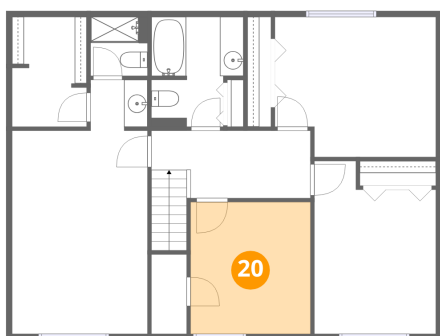
**19** Floor 3 - Bath



Dimensions: 4'10" x 5'0"  
Area: 24 sq. ft  
Counted as living area: Yes

Heated: Yes  
Finished: Yes  
Enclosed: Yes  
Contiguous: Yes  
Permitted: Yes  
Wet space: Yes  
Addition: No  
Conversion: No

**20** Floor 3 - Bedroom



Dimensions: 10'2" x 11'2"  
Area: 114 sq. ft  
Counted as living area: Yes

Heated: Yes  
Finished: Yes  
Enclosed: Yes  
Contiguous: Yes  
Permitted: Yes  
Wet space: No  
Addition: No  
Conversion: No