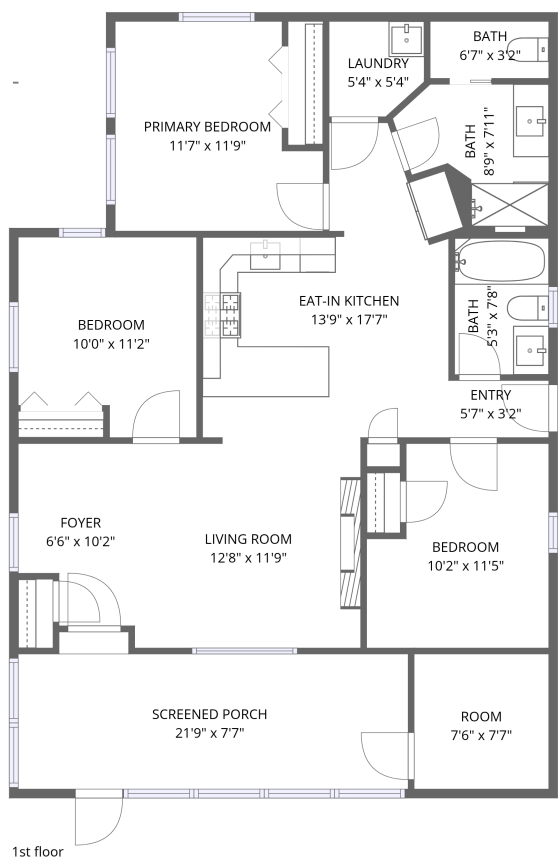


Home data report

11867 Highland Avenue, Conneaut Lakeshore, Conneaut Lake,  
Crawford County, Pennsylvania, United States, 16316




Total Area: 1030 sq. ft


1st Floor: 1030 sq. ft

Excluded: Screened porch 170 sq. ft, Walls: 83 sq. ft

Property summary

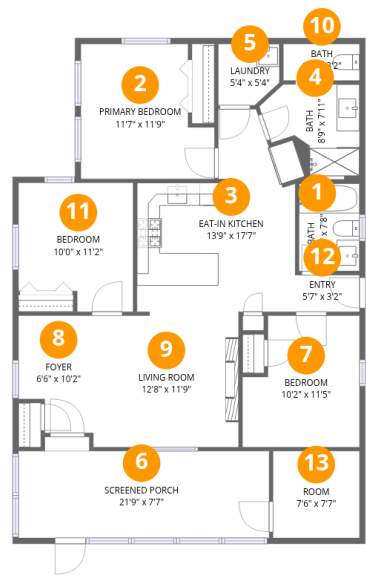
 1 Floors

 3 Bedrooms

 2 Bathrooms

Home data report

11867 Highland Avenue, Conneaut Lakeshore, Conneaut Lake,  
Crawford County, Pennsylvania, United States, 16316



Room dimensions

Floor 1

Total:1030sqft    Excluded: 170sqft

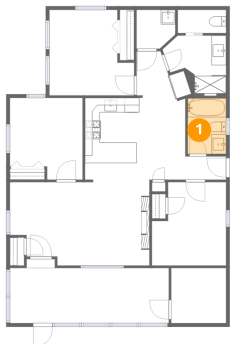
#		Dimensions	sqft	Counted as living area
1	Bath	5'3" x 7'8"	40 sq. ft	Yes
2	Primary Bedroom	11'7" x 11'9"	136 sq. ft	Yes
3	Eat-in Kitchen	13'9" x 17'7"	242 sq. ft	Yes
4	Bath	8'9" x 7'11"	69 sq. ft	Yes
5	Laundry	5'4" x 5'4"	28 sq. ft	Yes
6	Screened Porch	21'9" x 7'7"	165 sq. ft	No
7	Bedroom	10'2" x 11'5"	117 sq. ft	Yes
8	Foyer	6'6" x 10'2"	66 sq. ft	Yes
9	Living Room	12'8" x 11'9"	149 sq. ft	Yes
10	Bath	6'7" x 3'2"	21 sq. ft	Yes
11	Bedroom	10'0" x 11'2"	112 sq. ft	Yes

Home data report

11867 Highland Avenue, Conneaut Lakeshore, Conneaut Lake,  
Crawford County, Pennsylvania, United States, 16316

#		Dimensions	sqft	Counted as living area
12	Entry	5'7" x 3'2"	18 sq. ft	Yes
13	Room	7'6" x 7'7"	57 sq. ft	Yes

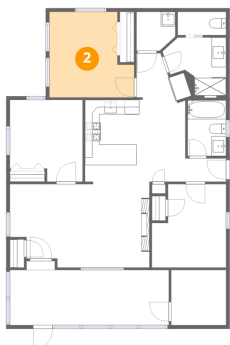
1 Floor 1 - Bath



Dimensions: 5'3" x 7'8"  
Area: 40 sq. ft  
Counted as living area: Yes

Heated: Yes  
Finished: Yes  
Enclosed: Yes  
Contiguous: Yes  
Permitted: Yes  
Wet space: Yes  
Addition: No  
Conversion: No

2 Floor 1 - Primary Bedroom



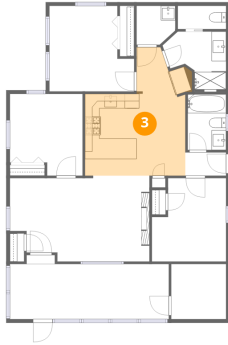
Dimensions: 11'7" x 11'9"  
Area: 136 sq. ft  
Counted as living area: Yes

Heated: Yes  
Finished: Yes  
Enclosed: Yes  
Contiguous: Yes  
Permitted: Yes  
Wet space: No  
Addition: No  
Conversion: No

## Home data report

11867 Highland Avenue, Conneaut Lakeshore, Conneaut Lake,  
Crawford County, Pennsylvania, United States, 16316

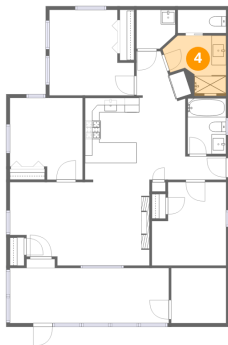
### 3 Floor 1 - Eat-in Kitchen



Dimensions: 13'9" x 17'7"  
Area: 242 sq. ft  
Counted as living area: Yes

Heated: Yes  
Finished: Yes  
Enclosed: Yes  
Contiguous: Yes  
Permitted: Yes  
Wet space: No  
Addition: No  
Conversion: No

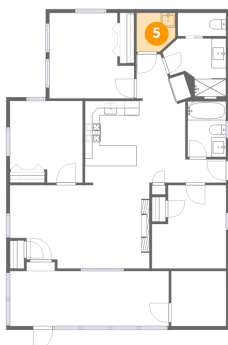
### 4 Floor 1 - Bath



Dimensions: 8'9" x 7'11"  
Area: 69 sq. ft  
Counted as living area: Yes

Heated: Yes  
Finished: Yes  
Enclosed: Yes  
Contiguous: Yes  
Permitted: Yes  
Wet space: Yes  
Addition: No  
Conversion: No

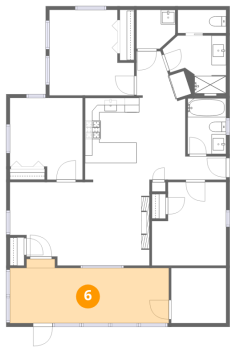
### 5 Floor 1 - Laundry



Dimensions: 5'4" x 5'4"  
Area: 28 sq. ft  
Counted as living area: Yes

Heated: Yes  
Finished: Yes  
Enclosed: Yes  
Contiguous: Yes  
Permitted: Yes  
Wet space: No  
Addition: No  
Conversion: No

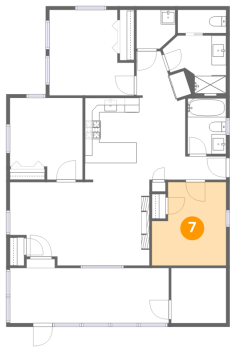
6 Floor 1 - Screened Porch



Dimensions: 21'9" x 7'7"  
Area: 165 sq. ft  
Counted as living area: No

Heated: No  
Finished: No  
Enclosed: No  
Contiguous: Yes  
Permitted: Yes  
Wet space: No  
Addition: No  
Conversion: No

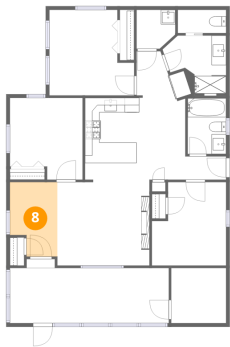
7 Floor 1 - Bedroom



Dimensions: 10'2" x 11'5"  
Area: 117 sq. ft  
Counted as living area: Yes

Heated: Yes  
Finished: Yes  
Enclosed: Yes  
Contiguous: Yes  
Permitted: Yes  
Wet space: No  
Addition: No  
Conversion: No

8 Floor 1 - Foyer

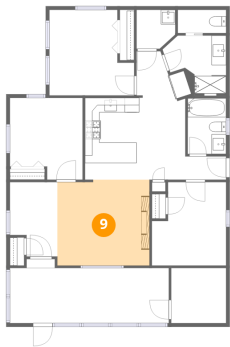


Dimensions: 6'6" x 10'2"  
Area: 66 sq. ft  
Counted as living area: Yes

Heated: Yes  
Finished: Yes  
Enclosed: Yes  
Contiguous: Yes  
Permitted: Yes  
Wet space: No  
Addition: No  
Conversion: No

11867 Highland Avenue, Conneaut Lakeshore, Conneaut Lake,  
Crawford County, Pennsylvania, United States, 16316

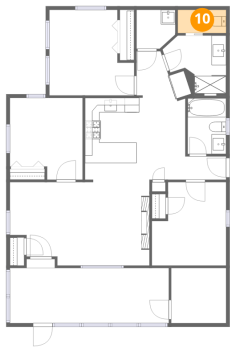
9 Floor 1 - Living Room



Dimensions: 12'8" x 11'9"  
Area: 149 sq. ft  
Counted as living area: Yes

Heated: Yes  
Finished: Yes  
Enclosed: Yes  
Contiguous: Yes  
Permitted: Yes  
Wet space: No  
Addition: No  
Conversion: No

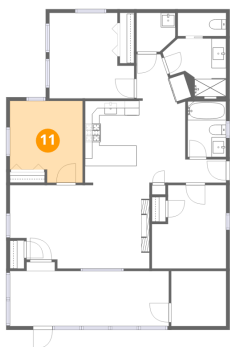
10 Floor 1 - Bath



Dimensions: 6'7" x 3'2"  
Area: 21 sq. ft  
Counted as living area: Yes

Heated: Yes  
Finished: Yes  
Enclosed: Yes  
Contiguous: Yes  
Permitted: Yes  
Wet space: Yes  
Addition: No  
Conversion: No

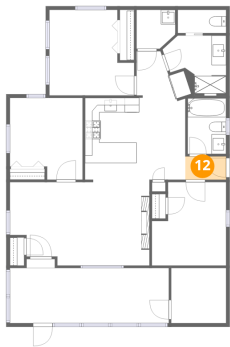
11 Floor 1 - Bedroom



Dimensions: 10'0" x 11'2"  
Area: 112 sq. ft  
Counted as living area: Yes

Heated: Yes  
Finished: Yes  
Enclosed: Yes  
Contiguous: Yes  
Permitted: Yes  
Wet space: No  
Addition: No  
Conversion: No

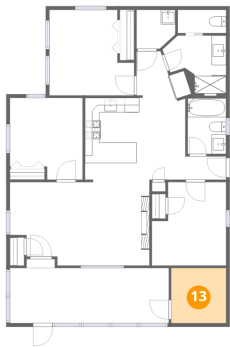
12 Floor 1 - Entry



Dimensions: 5'7" x 3'2"  
Area: 18 sq. ft  
Counted as living area: Yes

Heated: Yes  
Finished: Yes  
Enclosed: Yes  
Contiguous: Yes  
Permitted: Yes  
Wet space: No  
Addition: No  
Conversion: No

13 Floor 1 - Room



Dimensions: 7'6" x 7'7"  
Area: 57 sq. ft  
Counted as living area: Yes

Heated: Yes  
Finished: Yes  
Enclosed: Yes  
Contiguous: Yes  
Permitted: Yes  
Wet space: No  
Addition: No  
Conversion: No