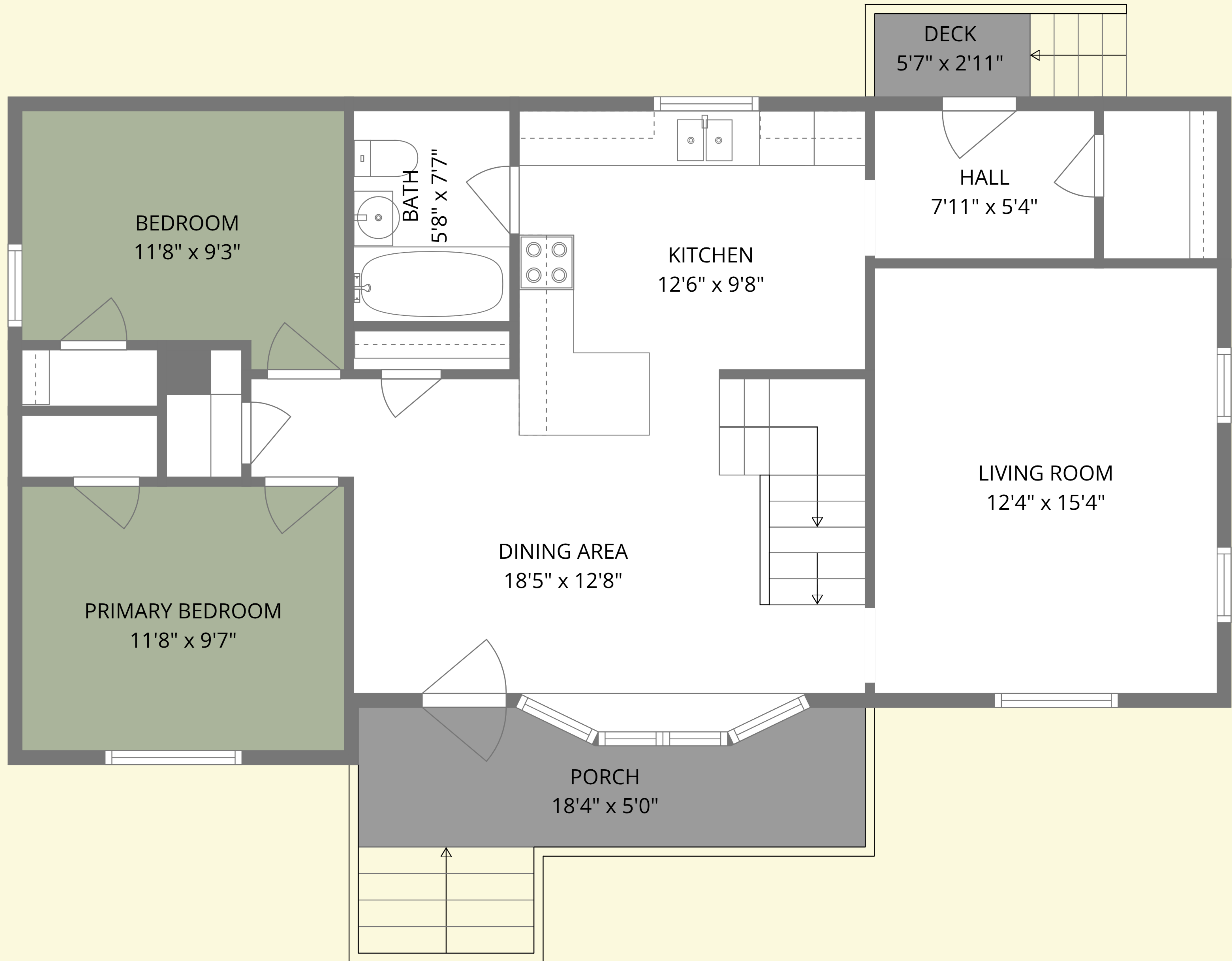


BASEMENT
28'6" x 23'1"

HALL
3'5" x 4'1"

TOTAL: 2235 sq. ft

Basement: 630 sq. ft, 1st floor: 941 sq. ft, 2nd floor: 664 sq. ft
EXCLUDED AREAS: PORCH: 81 sq. ft, DECK: 17 sq. ft, BALCONY: 27 sq. ft,
WALLS: 179 sq. ft

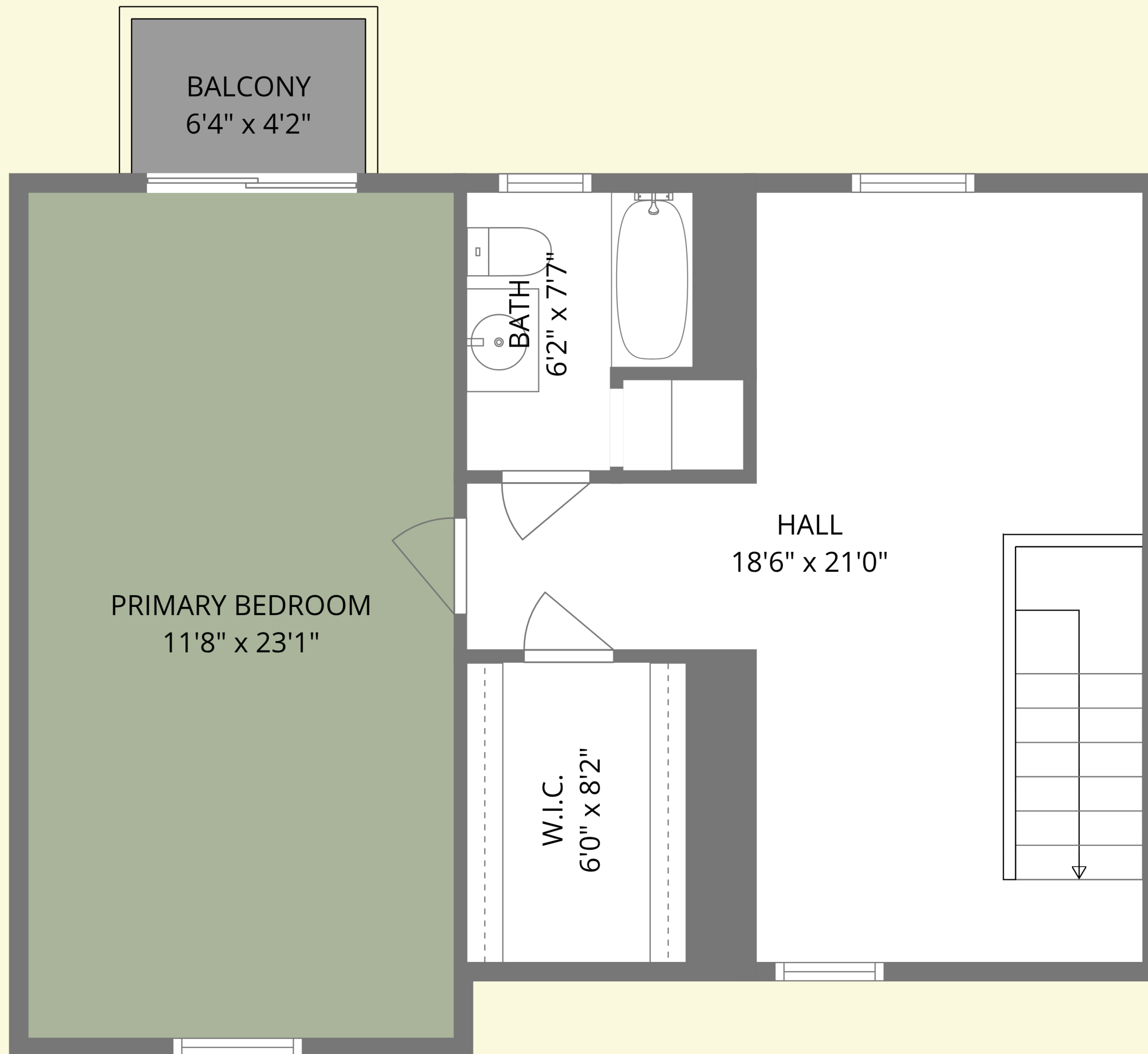


TOTAL: 2235 sq. ft

Basement: 630 sq. ft, 1st floor: 941 sq. ft, 2nd floor: 664 sq. ft

EXCLUDED AREAS: PORCH: 81 sq. ft, DECK: 17 sq. ft, BALCONY: 27 sq. ft,

WALLS: 179 sq. ft



PRIMARY BEDROOM
11'8" x 23'1"

BALCONY
6'4" x 4'2"

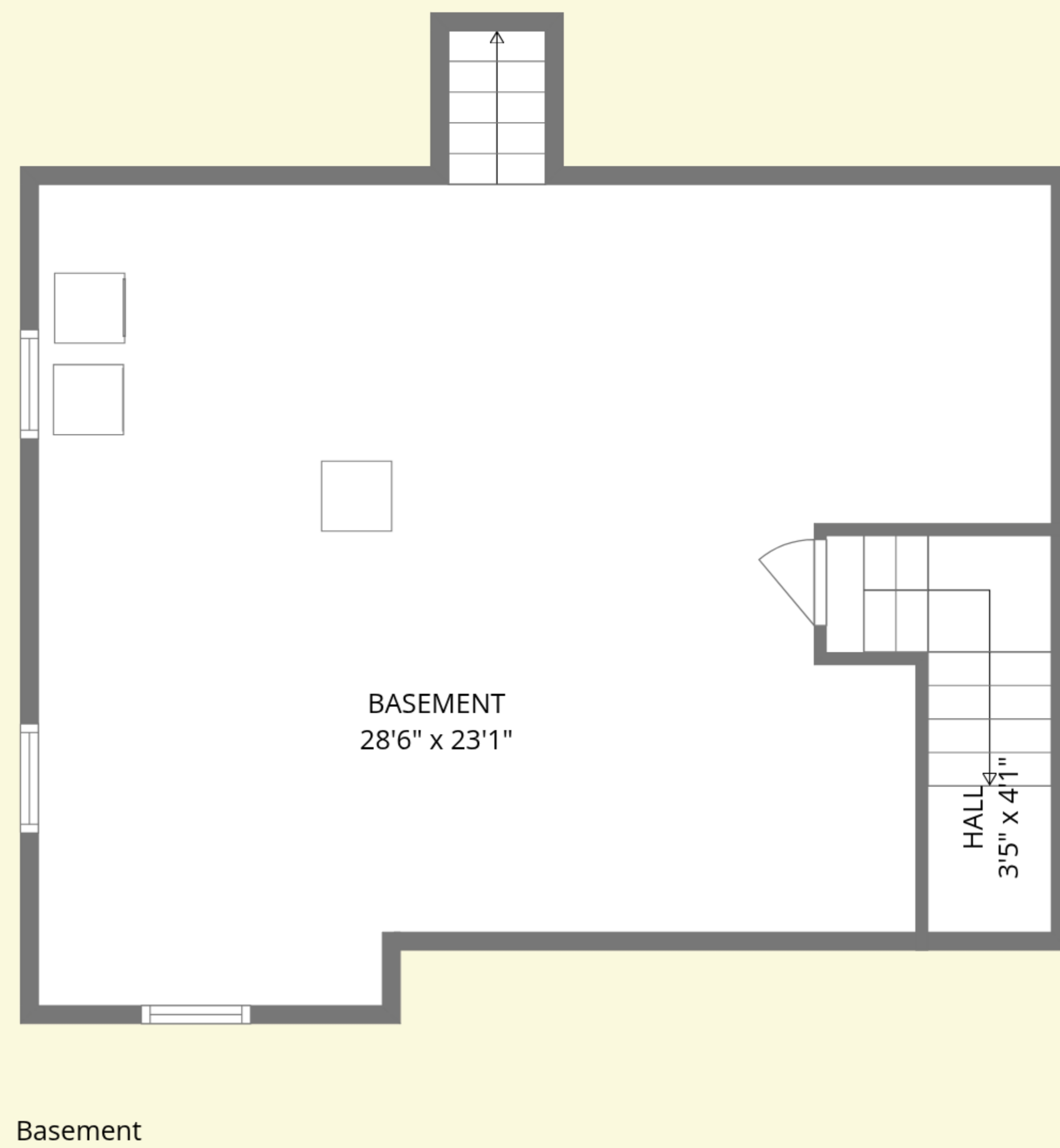
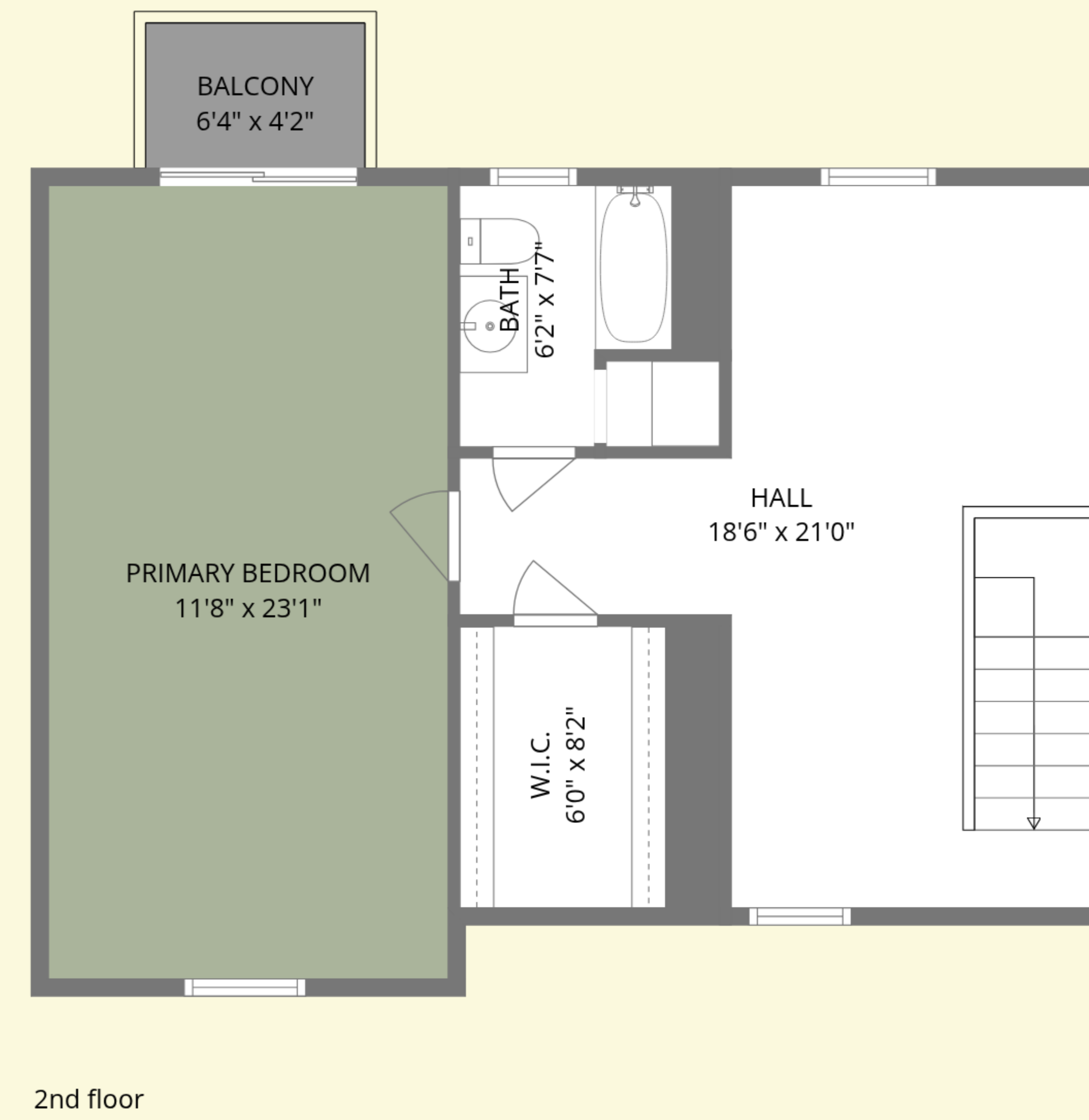
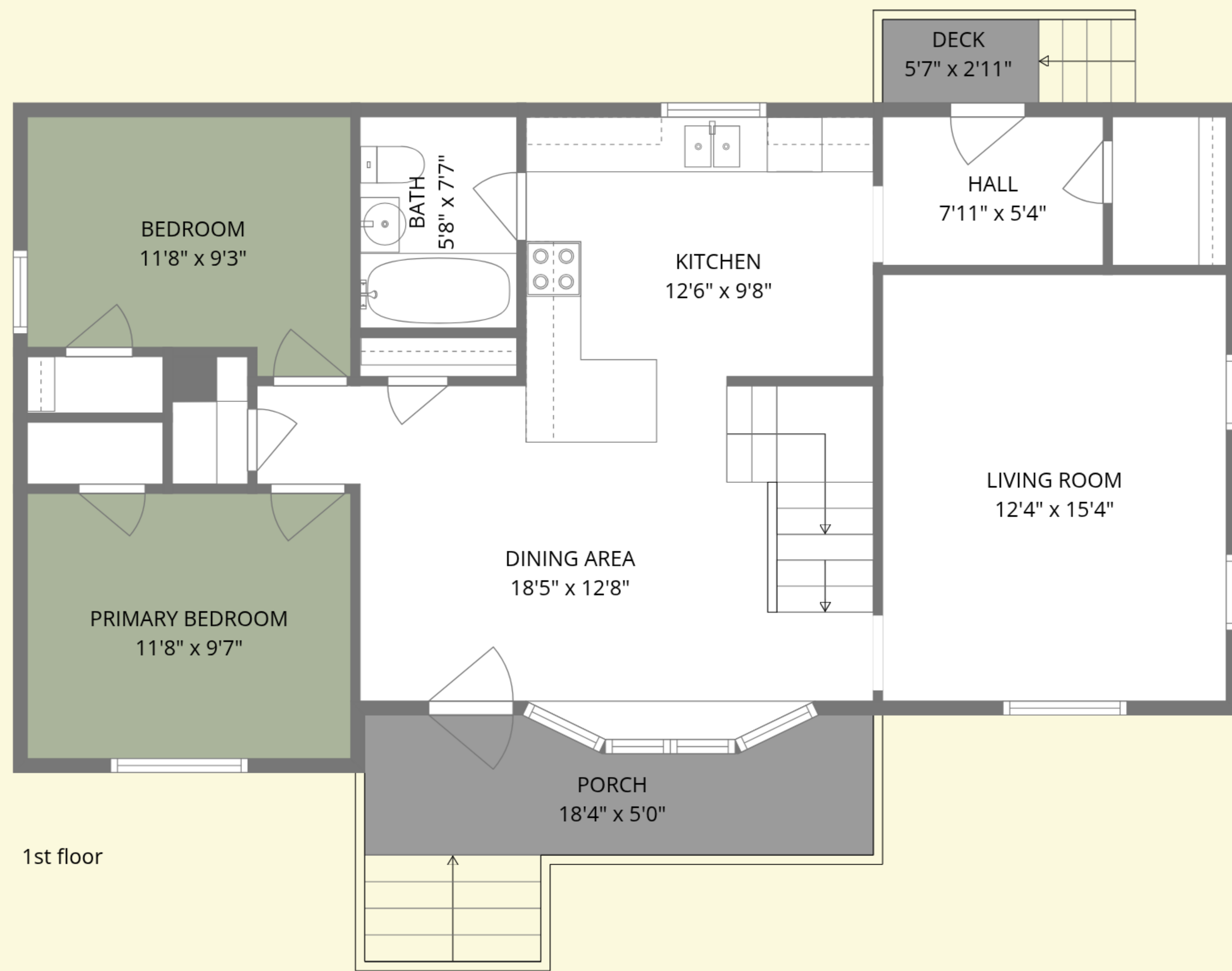
BATH
6'2" x 7'7"

W.I.C.
6'0" x 8'2"

HALL
18'6" x 21'0"

TOTAL: 2235 sq. ft

Basement: 630 sq. ft, 1st floor: 941 sq. ft, 2nd floor: 664 sq. ft
EXCLUDED AREAS: PORCH: 81 sq. ft, DECK: 17 sq. ft, BALCONY: 27 sq. ft,
WALLS: 179 sq. ft



TOTAL: 2235 sq. ft

Basement: 630 sq. ft, 1st floor: 941 sq. ft, 2nd floor: 664 sq. ft

EXCLUDED AREAS: PORCH: 81 sq. ft, DECK: 17 sq. ft, BALCONY: 27 sq. ft,

WALLS: 179 sq. ft