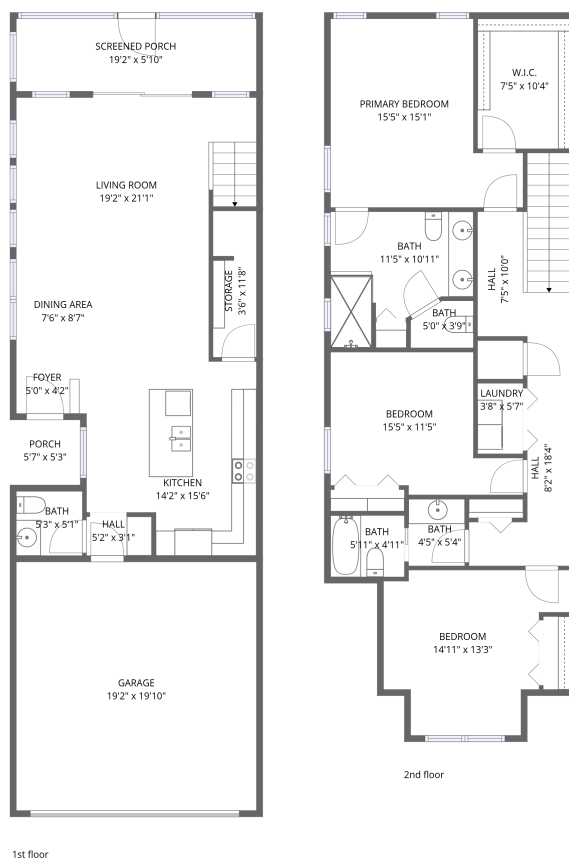


## Home data report

450 Harbor Springs Drive, Cove Springs, Palm Harbor, Pinellas County, Florida, United States, 34683



**Total Area: 1650 sq. ft**

1st Floor: 627 sq. ft, 2nd Floor: 1023 sq. ft

Excluded: Garage 381 sq. ft, Storage 41 sq. ft, Screened porch 111 sq. ft, Porch 29 sq. ft, Walls: 149 sq. ft

## Property summary

 **2** Floors

 **3** Bedrooms

 **2** Bathrooms

Home data report

**450 Harbor Springs Drive, Cove Springs, Palm Harbor, Pinellas  
County, Florida, United States, 34683**

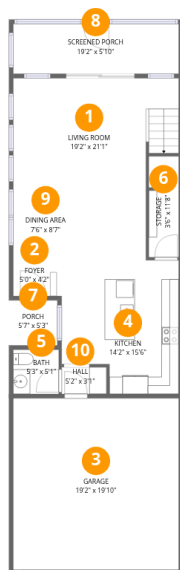


**1**  
Half baths



**1**  
Garages

# 450 Harbor Springs Drive, Cove Springs, Palm Harbor, Pinellas County, Florida, United States, 34683



## Room dimensions

Floor 1

Total:627sqft Excluded: 562sqft

| #  |                | Dimensions     | sqft       | Counted as living area |
|----|----------------|----------------|------------|------------------------|
| 1  | Living Room    | 19'2" x 21'1"  | 293 sq. ft | Yes                    |
| 2  | Foyer          | 5'0" x 4'2"    | 21 sq. ft  | Yes                    |
| 3  | Garage         | 19'2" x 19'10" | 381 sq. ft | No                     |
| 4  | Kitchen        | 14'2" x 15'6"  | 194 sq. ft | Yes                    |
| 5  | Bath           | 5'3" x 5'1"    | 27 sq. ft  | Yes                    |
| 6  | Storage        | 3'6" x 11'8"   | 40 sq. ft  | No                     |
| 7  | Porch          | 5'7" x 5'3"    | 29 sq. ft  | No                     |
| 8  | Screened Porch | 19'2" x 5'10"  | 111 sq. ft | No                     |
| 9  | Dining Area    | 7'6" x 8'7"    | 64 sq. ft  | Yes                    |
| 10 | Hall           | 5'2" x 3'1"    | 16 sq. ft  | Yes                    |

Home data report

450 Harbor Springs Drive, Cove Springs, Palm Harbor, Pinellas County, Florida, United States, 34683



## Room dimensions

Floor 2

Total:1023sqft Excluded: 0sqft

| #  |                 | Dimensions     | sqft       | Counted as living area |
|----|-----------------|----------------|------------|------------------------|
| 11 | Bath            | 5'0" x 3'9"    | 17 sq. ft  | Yes                    |
| 12 | Primary Bedroom | 15'5" x 15'1"  | 189 sq. ft | Yes                    |
| 13 | W.I.C.          | 7'5" x 10'4"   | 77 sq. ft  | Yes                    |
| 14 | Bath            | 5'11" x 4'11"  | 29 sq. ft  | Yes                    |
| 15 | Bath            | 11'5" x 10'11" | 98 sq. ft  | Yes                    |
| 16 | Hall            | 7'5" x 10'0"   | 90 sq. ft  | Yes                    |
| 17 | Bedroom         | 15'5" x 11'5"  | 137 sq. ft | Yes                    |
| 18 | Bedroom         | 14'11" x 13'3" | 158 sq. ft | Yes                    |
| 19 | Hall            | 8'2" x 18'4"   | 80 sq. ft  | Yes                    |
| 20 | Bath            | 4'5" x 5'4"    | 24 sq. ft  | Yes                    |
| 21 | Laundry         | 3'8" x 5'7"    | 21 sq. ft  | Yes                    |

450 Harbor Springs Drive, Cove Springs, Palm Harbor, Pinellas County, Florida, United States, 34683

**1** Floor 1 - Living Room

---



Dimensions: 19'2" x 21'1"  
Area: 293 sq. ft  
Counted as living area: Yes

Heated: Yes  
Finished: Yes  
Enclosed: Yes  
Contiguous: Yes  
Permitted: Yes  
Wet space: No  
Addition: No  
Conversion: No

**2** Floor 1 - Foyer

---



Dimensions: 5'0" x 4'2"  
Area: 21 sq. ft  
Counted as living area: Yes

Heated: Yes  
Finished: Yes  
Enclosed: Yes  
Contiguous: Yes  
Permitted: Yes  
Wet space: No  
Addition: No  
Conversion: No

450 Harbor Springs Drive, Cove Springs, Palm Harbor, Pinellas County, Florida, United States, 34683

**3** Floor 1 - Garage



Dimensions: 19'2" x 19'10"  
Area: 381 sq. ft  
Counted as living area: No

Heated: No  
Finished: No  
Enclosed: Yes  
Contiguous: Yes  
Permitted: Yes  
Wet space: No  
Addition: No  
Conversion: No

**4** Floor 1 - Kitchen



Dimensions: 14'2" x 15'6"  
Area: 194 sq. ft  
Counted as living area: Yes

Heated: Yes  
Finished: Yes  
Enclosed: Yes  
Contiguous: Yes  
Permitted: Yes  
Wet space: No  
Addition: No  
Conversion: No

**5** Floor 1 - Bath



Dimensions: 5'3" x 5'1"  
Area: 27 sq. ft  
Counted as living area: Yes

Heated: Yes  
Finished: Yes  
Enclosed: Yes  
Contiguous: Yes  
Permitted: Yes  
Wet space: Yes  
Addition: No  
Conversion: No

450 Harbor Springs Drive, Cove Springs, Palm Harbor, Pinellas County, Florida, United States, 34683

**6** Floor 1 - Storage



Dimensions: 3'6" x 11'8"  
Area: 40 sq. ft  
Counted as living area: No

Heated: No  
Finished: Yes  
Enclosed: No  
Contiguous: Yes  
Permitted: Yes  
Wet space: No  
Addition: No  
Conversion: No

**7** Floor 1 - Porch



Dimensions: 5'7" x 5'3"  
Area: 29 sq. ft  
Counted as living area: No

Heated: No  
Finished: No  
Enclosed: No  
Contiguous: Yes  
Permitted: Yes  
Wet space: No  
Addition: No  
Conversion: No

**8** Floor 1 - Screened Porch



Dimensions: 19'2" x 5'10"  
Area: 111 sq. ft  
Counted as living area: No

Heated: No  
Finished: No  
Enclosed: No  
Contiguous: Yes  
Permitted: Yes  
Wet space: No  
Addition: No  
Conversion: No

# 450 Harbor Springs Drive, Cove Springs, Palm Harbor, Pinellas County, Florida, United States, 34683

## 9 Floor 1 - Dining Area



Dimensions: 7'6" x 8'7"  
Area: 64 sq. ft  
Counted as living area: Yes

Heated: Yes  
Finished: Yes  
Enclosed: Yes  
Contiguous: Yes  
Permitted: Yes  
Wet space: No  
Addition: No  
Conversion: No

## 10 Floor 1 - Hall



Dimensions: 5'2" x 3'1"  
Area: 16 sq. ft  
Counted as living area: Yes

Heated: Yes  
Finished: Yes  
Enclosed: Yes  
Contiguous: Yes  
Permitted: Yes  
Wet space: No  
Addition: No  
Conversion: No

## 11 Floor 2 - Bath



Dimensions: 5'0" x 3'9"  
Area: 17 sq. ft  
Counted as living area: Yes

Heated: Yes  
Finished: Yes  
Enclosed: Yes  
Contiguous: Yes  
Permitted: Yes  
Wet space: Yes  
Addition: No  
Conversion: No

450 Harbor Springs Drive, Cove Springs, Palm Harbor, Pinellas County, Florida, United States, 34683

## 12 Floor 2 - Primary Bedroom



Dimensions: 15'5" x 15'1"  
Area: 189 sq. ft  
Counted as living area: Yes

Heated: Yes  
Finished: Yes  
Enclosed: Yes  
Contiguous: Yes  
Permitted: Yes  
Wet space: No  
Addition: No  
Conversion: No

## 13 Floor 2 - W.I.C.



Dimensions: 7'5" x 10'4"  
Area: 77 sq. ft  
Counted as living area: Yes

Heated: Yes  
Finished: Yes  
Enclosed: Yes  
Contiguous: Yes  
Permitted: Yes  
Wet space: No  
Addition: No  
Conversion: No

## 14 Floor 2 - Bath



Dimensions: 5'11" x 4'11"  
Area: 29 sq. ft  
Counted as living area: Yes

Heated: Yes  
Finished: Yes  
Enclosed: Yes  
Contiguous: Yes  
Permitted: Yes  
Wet space: Yes  
Addition: No  
Conversion: No

450 Harbor Springs Drive, Cove Springs, Palm Harbor, Pinellas County, Florida, United States, 34683

**15** Floor 2 - Bath



Dimensions: 11'5" x 10'11"  
Area: 98 sq. ft  
Counted as living area: Yes

Heated: Yes  
Finished: Yes  
Enclosed: Yes  
Contiguous: Yes  
Permitted: Yes  
Wet space: Yes  
Addition: No  
Conversion: No

**16** Floor 2 - Hall



Dimensions: 7'5" x 10'0"  
Area: 90 sq. ft  
Counted as living area: Yes

Heated: Yes  
Finished: Yes  
Enclosed: Yes  
Contiguous: Yes  
Permitted: Yes  
Wet space: No  
Addition: No  
Conversion: No

**17** Floor 2 - Bedroom



Dimensions: 15'5" x 11'5"  
Area: 137 sq. ft  
Counted as living area: Yes

Heated: Yes  
Finished: Yes  
Enclosed: Yes  
Contiguous: Yes  
Permitted: Yes  
Wet space: No  
Addition: No  
Conversion: No

450 Harbor Springs Drive, Cove Springs, Palm Harbor, Pinellas County, Florida, United States, 34683

**18** Floor 2 - Bedroom



Dimensions: 14'11" x 13'3"  
Area: 158 sq. ft  
Counted as living area: Yes

Heated: Yes  
Finished: Yes  
Enclosed: Yes  
Contiguous: Yes  
Permitted: Yes  
Wet space: No  
Addition: No  
Conversion: No

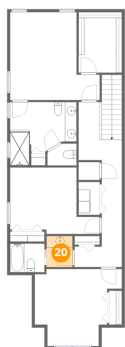
**19** Floor 2 - Hall



Dimensions: 8'2" x 18'4"  
Area: 80 sq. ft  
Counted as living area: Yes

Heated: Yes  
Finished: Yes  
Enclosed: Yes  
Contiguous: Yes  
Permitted: Yes  
Wet space: No  
Addition: No  
Conversion: No

**20** Floor 2 - Bath



Dimensions: 4'5" x 5'4"  
Area: 24 sq. ft  
Counted as living area: Yes

Heated: Yes  
Finished: Yes  
Enclosed: Yes  
Contiguous: Yes  
Permitted: Yes  
Wet space: Yes  
Addition: No  
Conversion: No

450 Harbor Springs Drive, Cove Springs, Palm Harbor, Pinellas  
County, Florida, United States, 34683

**21** Floor 2 - Laundry

---



Dimensions: 3'8" x 5'7"  
Area: 21 sq. ft  
Counted as living area: Yes

Heated: Yes  
Finished: Yes  
Enclosed: Yes  
Contiguous: Yes  
Permitted: Yes  
Wet space: No  
Addition: No  
Conversion: No