

Home data report

5023 Meadow Creek Drive, Roanoke, Virginia 24018, United States



Total Area: 2626 sq. ft

Below Ground: 0 sq. ft, 1st Floor: 1394 sq. ft, 2nd Floor: 1232 sq. ft

Excluded: Basement 1175 sq. ft, Fireplace 18 sq. ft, Garage 496 sq. ft, Patio 190 sq. ft, Walls: 257 sq. ft

Property summary

 **3** Floors

 **4** Bedrooms

 **2** Bathrooms

Home data report

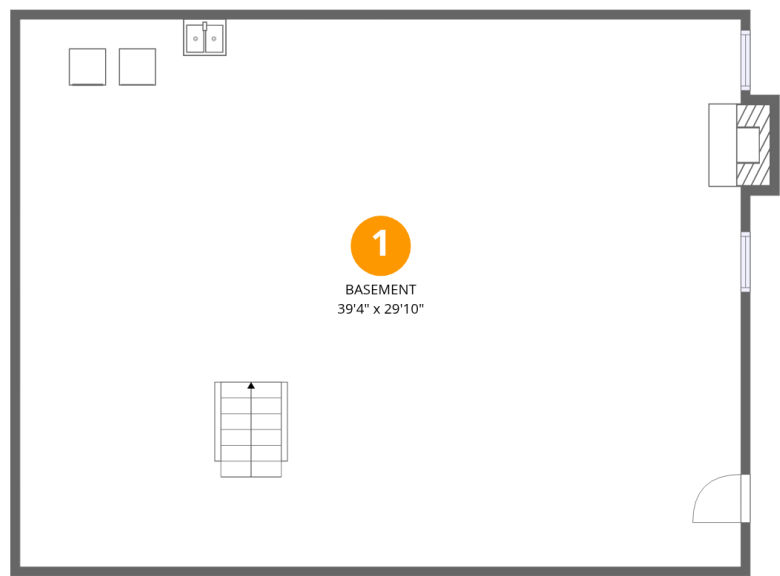
5023 Meadow Creek Drive, Roanoke, Virginia 24018, United States

 **2**
Half baths

 **1**
Garages

Home data report

5023 Meadow Creek Drive, Roanoke, Virginia 24018, United States

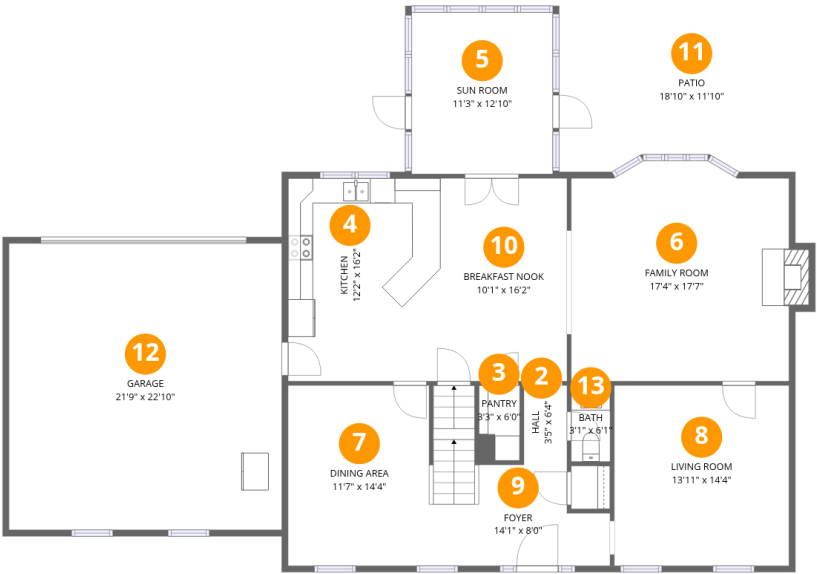


Room dimensions

Floor 1 Below grade Total:0sqft Excluded: 1184sqft

| # | | Dimensions | sqft | Counted as living area |
|---|----------|----------------|-------------|------------------------|
| 1 | Basement | 39'4" x 29'10" | 1180 sq. ft | No |

5023 Meadow Creek Drive, Roanoke, Virginia 24018, United States



Room dimensions

Floor 2 Total:1394sqft Excluded: 695sqft

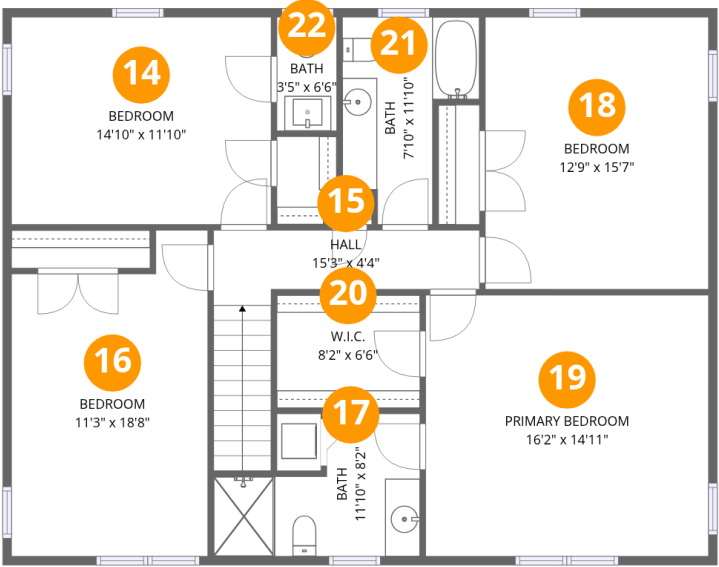
| # | | Dimensions | sqft | Counted as living area |
|----|----------------|-----------------|------------|------------------------|
| 2 | Hall | 3'5" x 6'4" | 22 sq. ft | Yes |
| 3 | Pantry | 3'3" x 6'0" | 20 sq. ft | Yes |
| 4 | Kitchen | 12'2" x 16'2" | 196 sq. ft | Yes |
| 5 | Sun Room | 11'3" x 12'10" | 145 sq. ft | Yes |
| 6 | Family Room | 17'4" x 17'7" | 298 sq. ft | Yes |
| 7 | Dining Area | 11'7" x 14'4" | 164 sq. ft | Yes |
| 8 | Living Room | 13'11" x 14'4" | 200 sq. ft | Yes |
| 9 | Foyer | 14'1" x 8'0" | 121 sq. ft | Yes |
| 10 | Breakfast Nook | 10'1" x 16'2" | 163 sq. ft | Yes |
| 11 | Patio | 18'10" x 11'10" | 190 sq. ft | No |
| 12 | Garage | 21'9" x 22'10" | 496 sq. ft | No |

Home data report

5023 Meadow Creek Drive, Roanoke, Virginia 24018, United States

| # | | Dimensions | sqft | Counted as living area |
|----|------|-------------|-----------|------------------------|
| 13 | Bath | 3'1" x 6'1" | 19 sq. ft | Yes |

5023 Meadow Creek Drive, Roanoke, Virginia 24018, United States



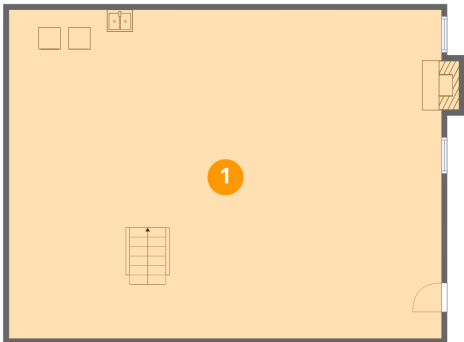
Room dimensions

Floor 3 Total:1232sqft Excluded: 0sqft

| # | | Dimensions | sqft | Counted as living area |
|----|-----------------|-----------------|------------|------------------------|
| 14 | Bedroom | 14'10" x 11'10" | 176 sq. ft | Yes |
| 15 | Hall | 15'3" x 4'4" | 86 sq. ft | Yes |
| 16 | Bedroom | 11'3" x 18'8" | 189 sq. ft | Yes |
| 17 | Bath | 11'10" x 8'2" | 73 sq. ft | Yes |
| 18 | Bedroom | 12'9" x 15'7" | 199 sq. ft | Yes |
| 19 | Primary Bedroom | 16'2" x 14'11" | 242 sq. ft | Yes |
| 20 | W.I.C. | 8'2" x 6'6" | 53 sq. ft | Yes |
| 21 | Bath | 7'10" x 11'10" | 70 sq. ft | Yes |
| 22 | Bath | 3'5" x 6'6" | 22 sq. ft | Yes |

5023 Meadow Creek Drive, Roanoke, Virginia 24018, United States

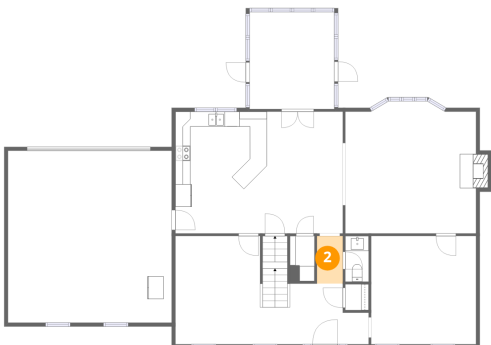
1 Floor 1 - Basement



Dimensions: 39'4" x 29'10"
Area: 1180 sq. ft
Counted as living area: No

Heated: Yes
Finished: No
Enclosed: Yes
Contiguous: Yes
Permitted: Yes
Wet space: No
Addition: No
Conversion: No

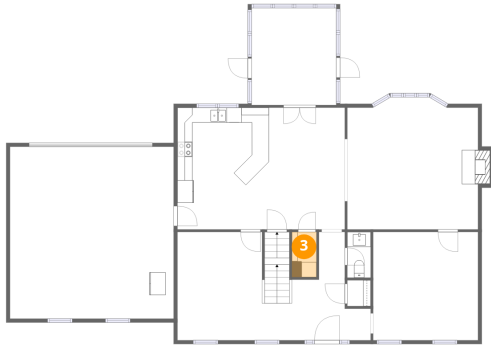
2 Floor 2 - Hall



Dimensions: 3'5" x 6'4"
Area: 22 sq. ft
Counted as living area: Yes

Heated: Yes
Finished: Yes
Enclosed: Yes
Contiguous: Yes
Permitted: Yes
Wet space: No
Addition: No
Conversion: No

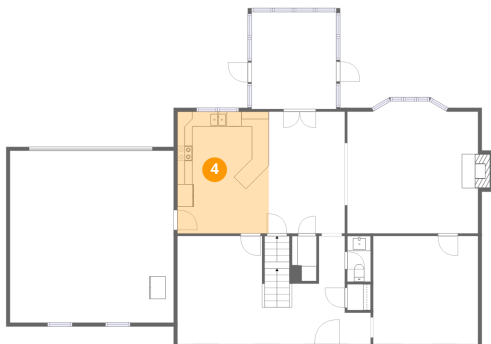
3 Floor 2 - Pantry



Dimensions: 3'3" x 6'0"
Area: 20 sq. ft
Counted as living area: Yes

Heated: Yes
Finished: Yes
Enclosed: Yes
Contiguous: Yes
Permitted: Yes
Wet space: No
Addition: No
Conversion: No

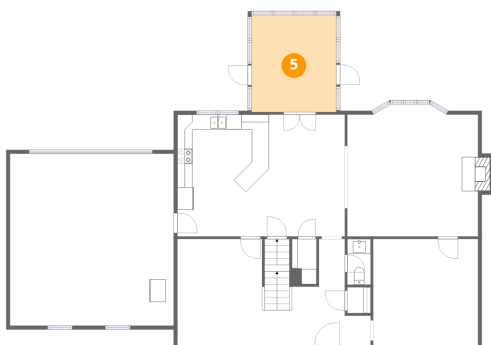
4 Floor 2 - Kitchen



Dimensions: 12'2" x 16'2"
Area: 196 sq. ft
Counted as living area: Yes

Heated: Yes
Finished: Yes
Enclosed: Yes
Contiguous: Yes
Permitted: Yes
Wet space: No
Addition: No
Conversion: No

5 Floor 2 - Sun Room



Dimensions: 11'3" x 12'10"
Area: 145 sq. ft
Counted as living area: Yes

Heated: Yes
Finished: Yes
Enclosed: Yes
Contiguous: Yes
Permitted: Yes
Wet space: No
Addition: No
Conversion: No

5023 Meadow Creek Drive, Roanoke, Virginia 24018, United States

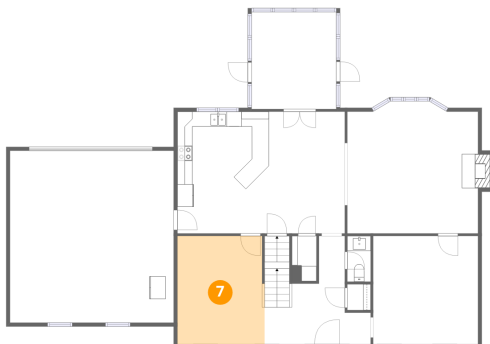
6 Floor 2 - Family Room



Dimensions: 17'4" x 17'7"
Area: 298 sq. ft
Counted as living area: Yes

Heated: Yes
Finished: Yes
Enclosed: Yes
Contiguous: Yes
Permitted: Yes
Wet space: No
Addition: No
Conversion: No

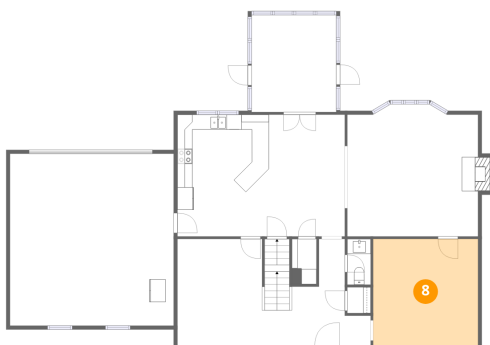
7 Floor 2 - Dining Area



Dimensions: 11'7" x 14'4"
Area: 164 sq. ft
Counted as living area: Yes

Heated: Yes
Finished: Yes
Enclosed: Yes
Contiguous: Yes
Permitted: Yes
Wet space: No
Addition: No
Conversion: No

8 Floor 2 - Living Room



Dimensions: 13'11" x 14'4"
Area: 200 sq. ft
Counted as living area: Yes

Heated: Yes
Finished: Yes
Enclosed: Yes
Contiguous: Yes
Permitted: Yes
Wet space: No
Addition: No
Conversion: No

9 Floor 2 - Foyer



Dimensions: 14'1" x 8'0"
Area: 121 sq. ft
Counted as living area: Yes

Heated: Yes
Finished: Yes
Enclosed: Yes
Contiguous: Yes
Permitted: Yes
Wet space: No
Addition: No
Conversion: No

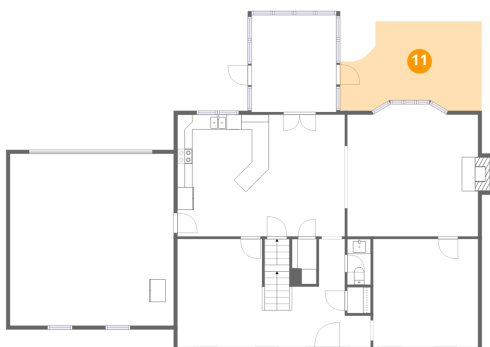
10 Floor 2 - Breakfast Nook



Dimensions: 10'1" x 16'2"
Area: 163 sq. ft
Counted as living area: Yes

Heated: Yes
Finished: Yes
Enclosed: Yes
Contiguous: Yes
Permitted: Yes
Wet space: No
Addition: No
Conversion: No

11 Floor 2 - Patio

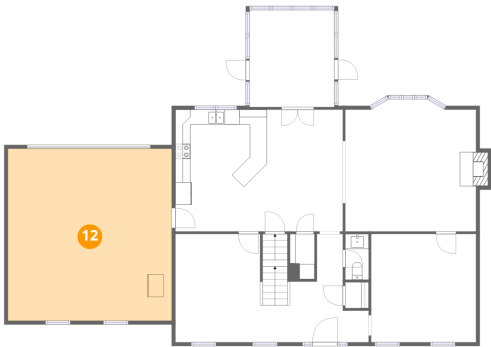


Dimensions: 18'10" x 11'10"
Area: 190 sq. ft
Counted as living area: No

Heated: No
Finished: No
Enclosed: No
Contiguous: Yes
Permitted: Yes
Wet space: No
Addition: No
Conversion: No

5023 Meadow Creek Drive, Roanoke, Virginia 24018, United States

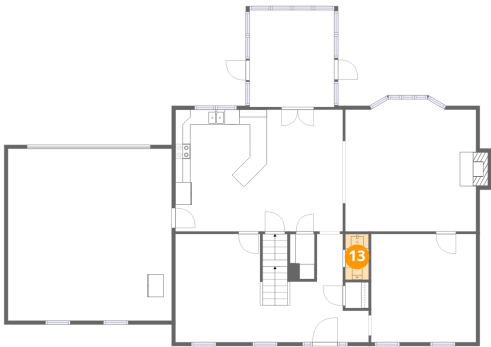
12 Floor 2 - Garage



Dimensions: 21'9" x 22'10"
Area: 496 sq. ft
Counted as living area: No

Heated: No
Finished: No
Enclosed: Yes
Contiguous: Yes
Permitted: Yes
Wet space: No
Addition: No
Conversion: No

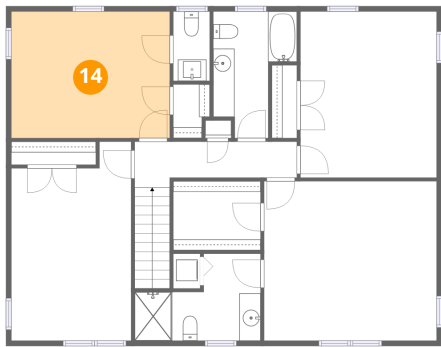
13 Floor 2 - Bath



Dimensions: 3'1" x 6'1"
Area: 19 sq. ft
Counted as living area: Yes

Heated: Yes
Finished: Yes
Enclosed: Yes
Contiguous: Yes
Permitted: Yes
Wet space: Yes
Addition: No
Conversion: No

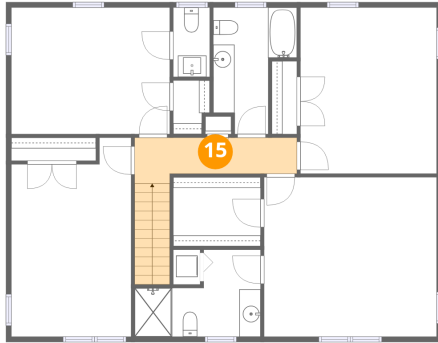
14 Floor 3 - Bedroom



Dimensions: 14'10" x 11'10"
Area: 176 sq. ft
Counted as living area: Yes

Heated: Yes
Finished: Yes
Enclosed: Yes
Contiguous: Yes
Permitted: Yes
Wet space: No
Addition: No
Conversion: No

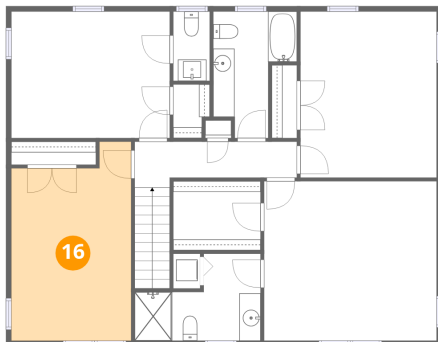
15 Floor 3 - Hall



Dimensions: 15'3" x 4'4"
Area: 86 sq. ft
Counted as living area: Yes

Heated: Yes
Finished: Yes
Enclosed: Yes
Contiguous: Yes
Permitted: Yes
Wet space: No
Addition: No
Conversion: No

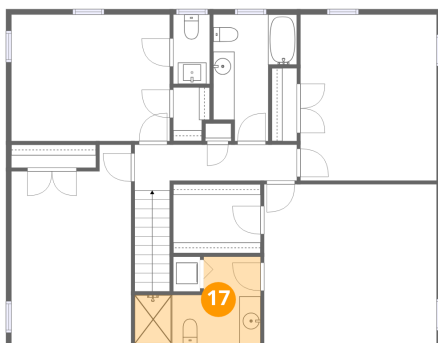
16 Floor 3 - Bedroom



Dimensions: 11'3" x 18'8"
Area: 189 sq. ft
Counted as living area: Yes

Heated: Yes
Finished: Yes
Enclosed: Yes
Contiguous: Yes
Permitted: Yes
Wet space: No
Addition: No
Conversion: No

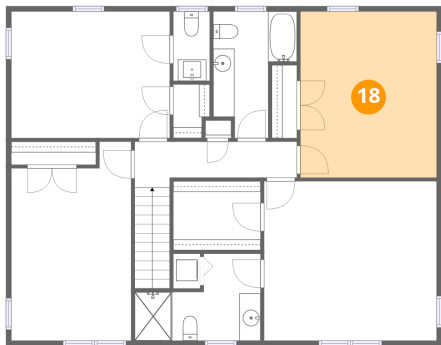
17 Floor 3 - Bath



Dimensions: 11'10" x 8'2"
Area: 73 sq. ft
Counted as living area: Yes

Heated: Yes
Finished: Yes
Enclosed: Yes
Contiguous: Yes
Permitted: Yes
Wet space: Yes
Addition: No
Conversion: No

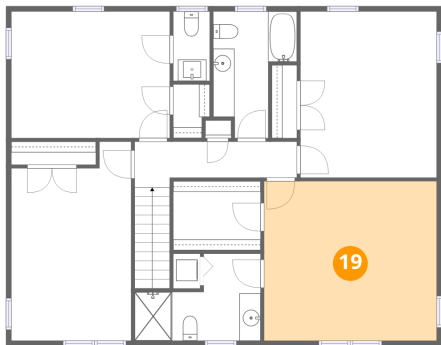
18 Floor 3 - Bedroom



Dimensions: 12'9" x 15'7"
Area: 199 sq. ft
Counted as living area: Yes

Heated: Yes
Finished: Yes
Enclosed: Yes
Contiguous: Yes
Permitted: Yes
Wet space: No
Addition: No
Conversion: No

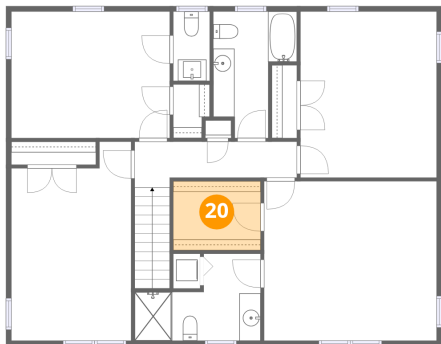
19 Floor 3 - Primary Bedroom



Dimensions: 16'2" x 14'11"
Area: 242 sq. ft
Counted as living area: Yes

Heated: Yes
Finished: Yes
Enclosed: Yes
Contiguous: Yes
Permitted: Yes
Wet space: No
Addition: No
Conversion: No

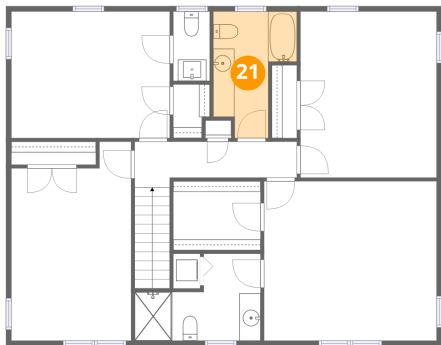
20 Floor 3 - W.I.C.



Dimensions: 8'2" x 6'6"
Area: 53 sq. ft
Counted as living area: Yes

Heated: Yes
Finished: Yes
Enclosed: Yes
Contiguous: Yes
Permitted: Yes
Wet space: No
Addition: No
Conversion: No

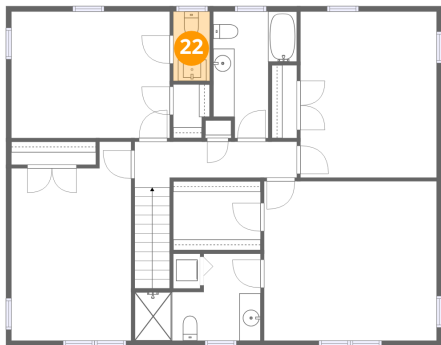
21 Floor 3 - Bath



Dimensions: 7'10" x 11'10"
Area: 70 sq. ft
Counted as living area: Yes

Heated: Yes
Finished: Yes
Enclosed: Yes
Contiguous: Yes
Permitted: Yes
Wet space: Yes
Addition: No
Conversion: No

22 Floor 3 - Bath



Dimensions: 3'5" x 6'6"
Area: 22 sq. ft
Counted as living area: Yes

Heated: Yes
Finished: Yes
Enclosed: Yes
Contiguous: Yes
Permitted: Yes
Wet space: Yes
Addition: No
Conversion: No