

# Home data report

## 589 4th Street, Buchanan, Botetourt County, Virginia, United States, 24066



**Total Area: 1726 sq. ft**

Basement: 0 sq. ft, 1st Floor: 1062 sq. ft, 2nd Floor: 664 sq. ft

Excluded: Basement 853 sq. ft, Deck 142 sq. ft, Porch 180 sq. ft, Walls: 207 sq. ft

### Property summary

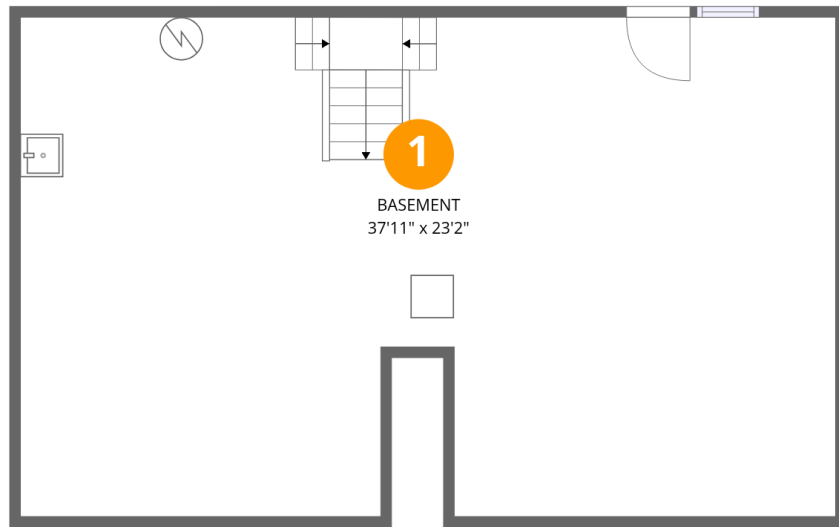
 **3** Floors

 **4** Bedrooms

 **2** Bathrooms

Home data report

589 4th Street, Buchanan, Botetourt County, Virginia, United States, 24066



## Room dimensions

Floor 1 Below grade

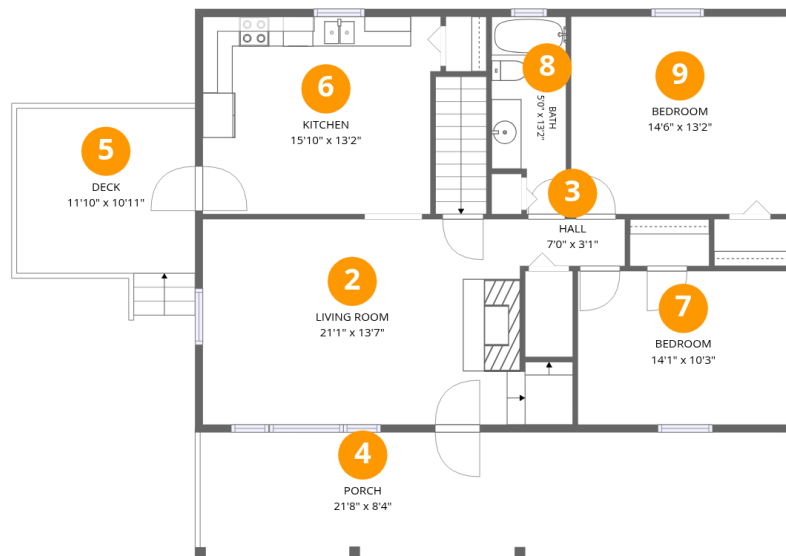
Total:0sqft

Excluded: 853sqft

#		Dimensions	sqft	Counted as living area
1	Basement	37'11" x 23'2"	853 sq. ft	No

# Home data report

## 589 4th Street, Buchanan, Botetourt County, Virginia, United States, 24066



### Room dimensions

Floor 2

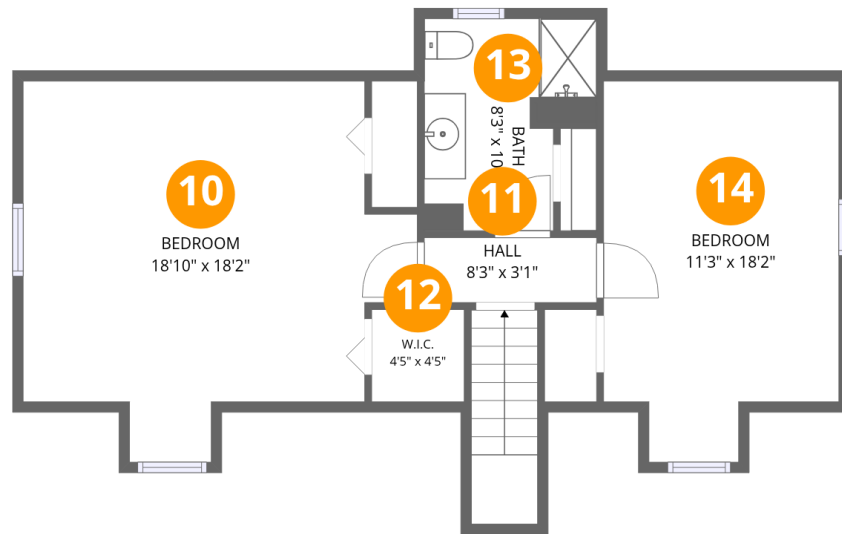
Total:1062sqft

Excluded: 322sqft

#		Dimensions	sqft	Counted as living area
2	Living Room	21'1" x 13'7"	304 sq. ft	Yes
3	Hall	7'0" x 3'1"	22 sq. ft	Yes
4	Porch	21'8" x 8'4"	180 sq. ft	No
5	Deck	11'10" x 10'11"	142 sq. ft	No
6	Kitchen	15'10" x 13'2"	202 sq. ft	Yes
7	Bedroom	14'1" x 10'3"	144 sq. ft	Yes
8	Bath	5'0" x 13'2"	58 sq. ft	Yes
9	Bedroom	14'6" x 13'2"	191 sq. ft	Yes

Home data report

589 4th Street, Buchanan, Botetourt County, Virginia, United States, 24066



## Room dimensions

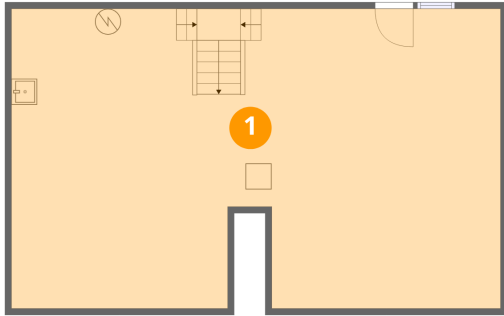
Floor 3

Total:664sqft

Excluded: 0sqft

#		Dimensions	sqft	Counted as living area
10	Bedroom	18'10" x 18'2"	273 sq. ft	Yes
11	Hall	8'3" x 3'1"	26 sq. ft	Yes
12	W.I.C.	4'5" x 4'5"	19 sq. ft	Yes
13	Bath	8'3" x 10'2"	69 sq. ft	Yes
14	Bedroom	11'3" x 18'2"	185 sq. ft	Yes

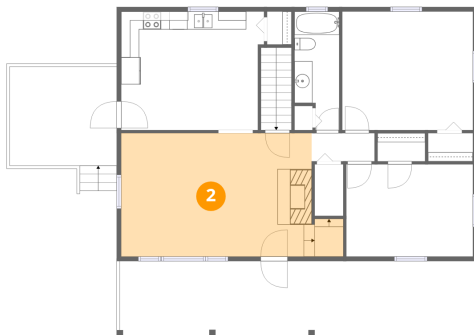
## 1 Floor 1 - Basement



Dimensions: 37'11" x 23'2"  
Area: 853 sq. ft  
Counted as living area: No

Heated: Yes  
Finished: No  
Enclosed: Yes  
Contiguous: Yes  
Permitted: Yes  
Wet space: No  
Addition: No  
Conversion: No

## 2 Floor 2 - Living Room



Dimensions: 21'1" x 13'7"  
Area: 304 sq. ft  
Counted as living area: Yes

Heated: Yes  
Finished: Yes  
Enclosed: Yes  
Contiguous: Yes  
Permitted: Yes  
Wet space: No  
Addition: No  
Conversion: No

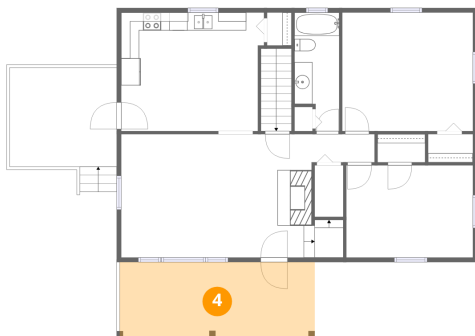
### 3 Floor 2 - Hall



Dimensions: 7'0" x 3'1"  
Area: 22 sq. ft  
Counted as living area: Yes

Heated: Yes  
Finished: Yes  
Enclosed: Yes  
Contiguous: Yes  
Permitted: Yes  
Wet space: No  
Addition: No  
Conversion: No

### 4 Floor 2 - Porch



Dimensions: 21'8" x 8'4"  
Area: 180 sq. ft  
Counted as living area: No

Heated: No  
Finished: No  
Enclosed: No  
Contiguous: Yes  
Permitted: Yes  
Wet space: No  
Addition: No  
Conversion: No

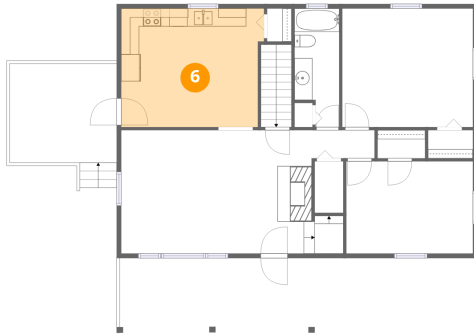
### 5 Floor 2 - Deck



Dimensions: 11'10" x 10'11"  
Area: 142 sq. ft  
Counted as living area: No

Heated: No  
Finished: No  
Enclosed: No  
Contiguous: Yes  
Permitted: Yes  
Wet space: No  
Addition: No  
Conversion: No

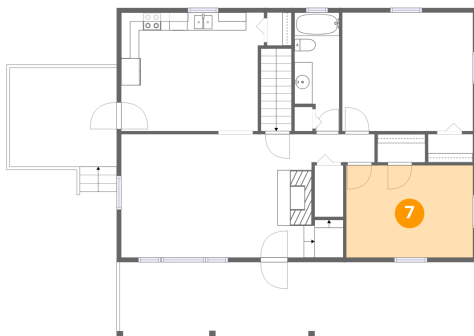
## 6 Floor 2 - Kitchen



Dimensions: 15'10" x 13'2"  
Area: 202 sq. ft  
Counted as living area: Yes

Heated: Yes  
Finished: Yes  
Enclosed: Yes  
Contiguous: Yes  
Permitted: Yes  
Wet space: No  
Addition: No  
Conversion: No

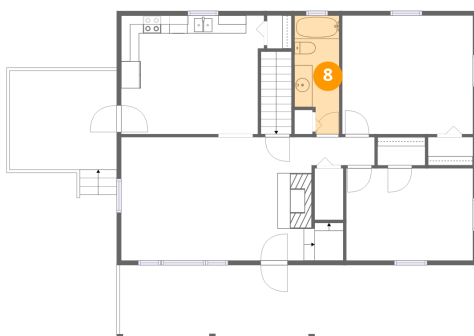
## 7 Floor 2 - Bedroom



Dimensions: 14'1" x 10'3"  
Area: 144 sq. ft  
Counted as living area: Yes

Heated: Yes  
Finished: Yes  
Enclosed: Yes  
Contiguous: Yes  
Permitted: Yes  
Wet space: No  
Addition: No  
Conversion: No

## 8 Floor 2 - Bath



Dimensions: 5'0" x 13'2"  
Area: 58 sq. ft  
Counted as living area: Yes

Heated: Yes  
Finished: Yes  
Enclosed: Yes  
Contiguous: Yes  
Permitted: Yes  
Wet space: Yes  
Addition: No  
Conversion: No

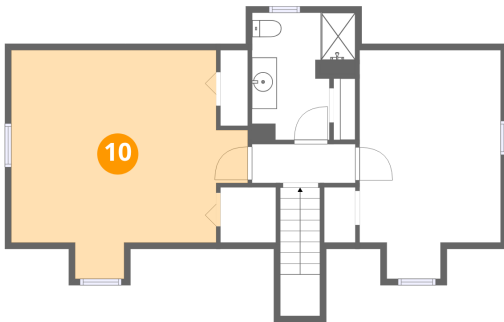
**9** Floor 2 - Bedroom



Dimensions: 14'6" x 13'2"  
Area: 191 sq. ft  
Counted as living area: Yes

Heated: Yes  
Finished: Yes  
Enclosed: Yes  
Contiguous: Yes  
Permitted: Yes  
Wet space: No  
Addition: No  
Conversion: No

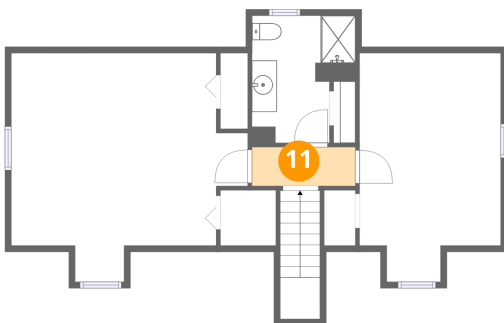
**10** Floor 3 - Bedroom



Dimensions: 18'10" x 18'2"  
Area: 273 sq. ft  
Counted as living area: Yes

Heated: Yes  
Finished: Yes  
Enclosed: Yes  
Contiguous: Yes  
Permitted: Yes  
Wet space: No  
Addition: No  
Conversion: No

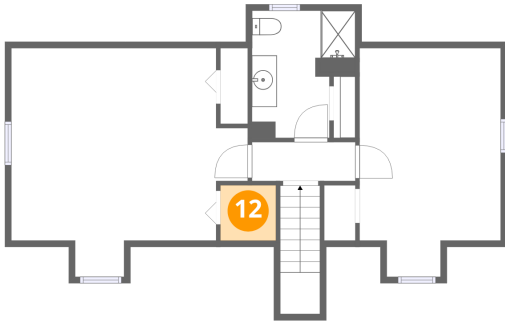
**11** Floor 3 - Hall



Dimensions: 8'3" x 3'1"  
Area: 26 sq. ft  
Counted as living area: Yes

Heated: Yes  
Finished: Yes  
Enclosed: Yes  
Contiguous: Yes  
Permitted: Yes  
Wet space: No  
Addition: No  
Conversion: No

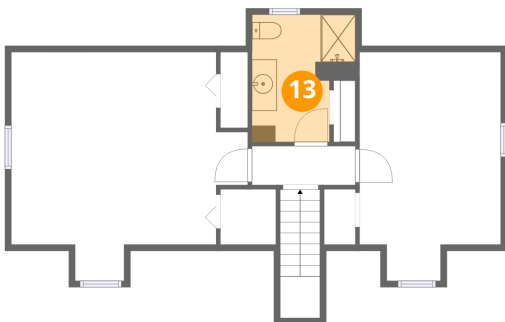
**12** Floor 3 - W.I.C.



Dimensions: 4'5" x 4'5"  
Area: 19 sq. ft  
Counted as living area: Yes

Heated: Yes  
Finished: Yes  
Enclosed: Yes  
Contiguous: Yes  
Permitted: Yes  
Wet space: No  
Addition: No  
Conversion: No

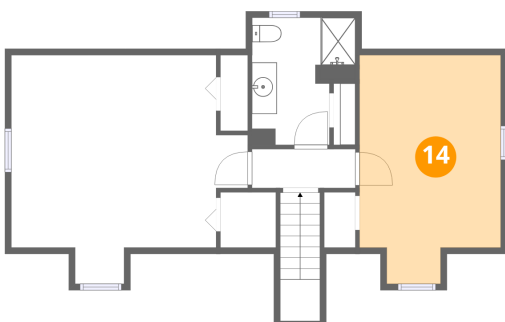
**13** Floor 3 - Bath



Dimensions: 8'3" x 10'2"  
Area: 69 sq. ft  
Counted as living area: Yes

Heated: Yes  
Finished: Yes  
Enclosed: Yes  
Contiguous: Yes  
Permitted: Yes  
Wet space: Yes  
Addition: No  
Conversion: No

**14** Floor 3 - Bedroom



Dimensions: 11'3" x 18'2"  
Area: 185 sq. ft  
Counted as living area: Yes

Heated: Yes  
Finished: Yes  
Enclosed: Yes  
Contiguous: Yes  
Permitted: Yes  
Wet space: No  
Addition: No  
Conversion: No