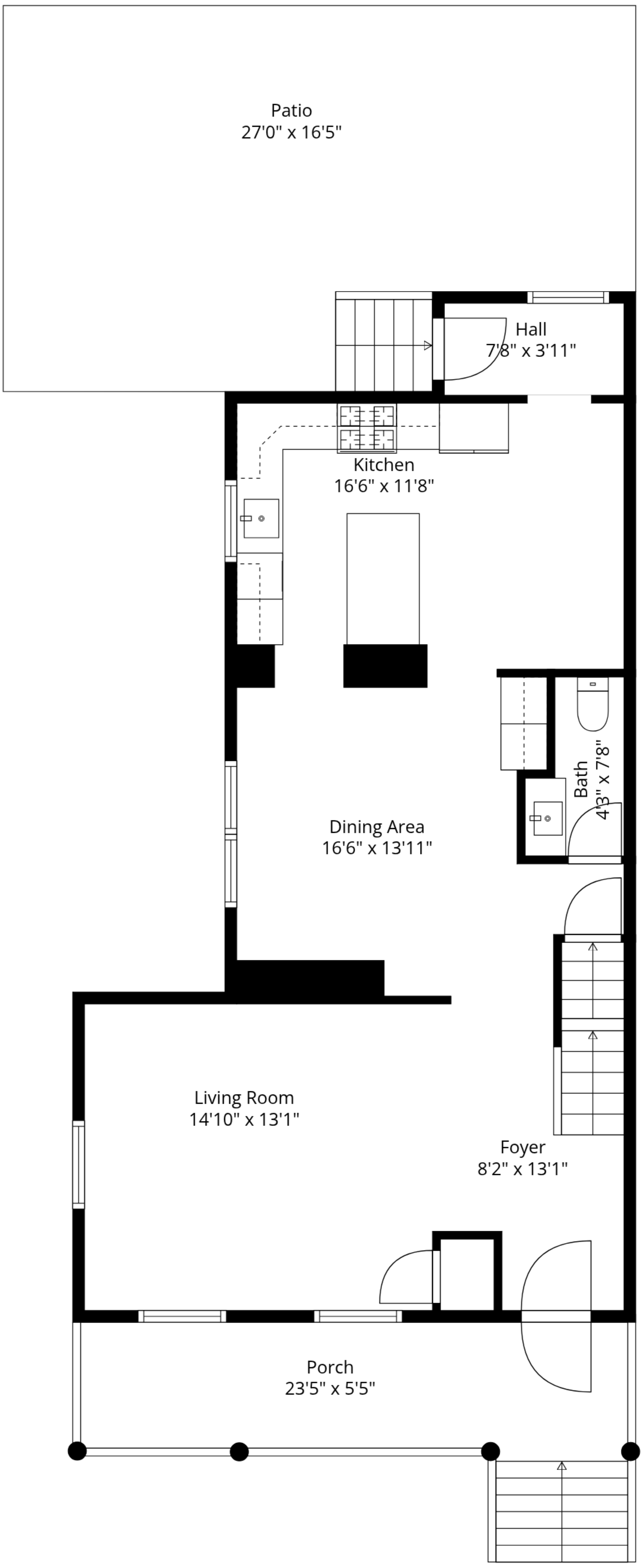


TOTAL: 2558 sq. ft

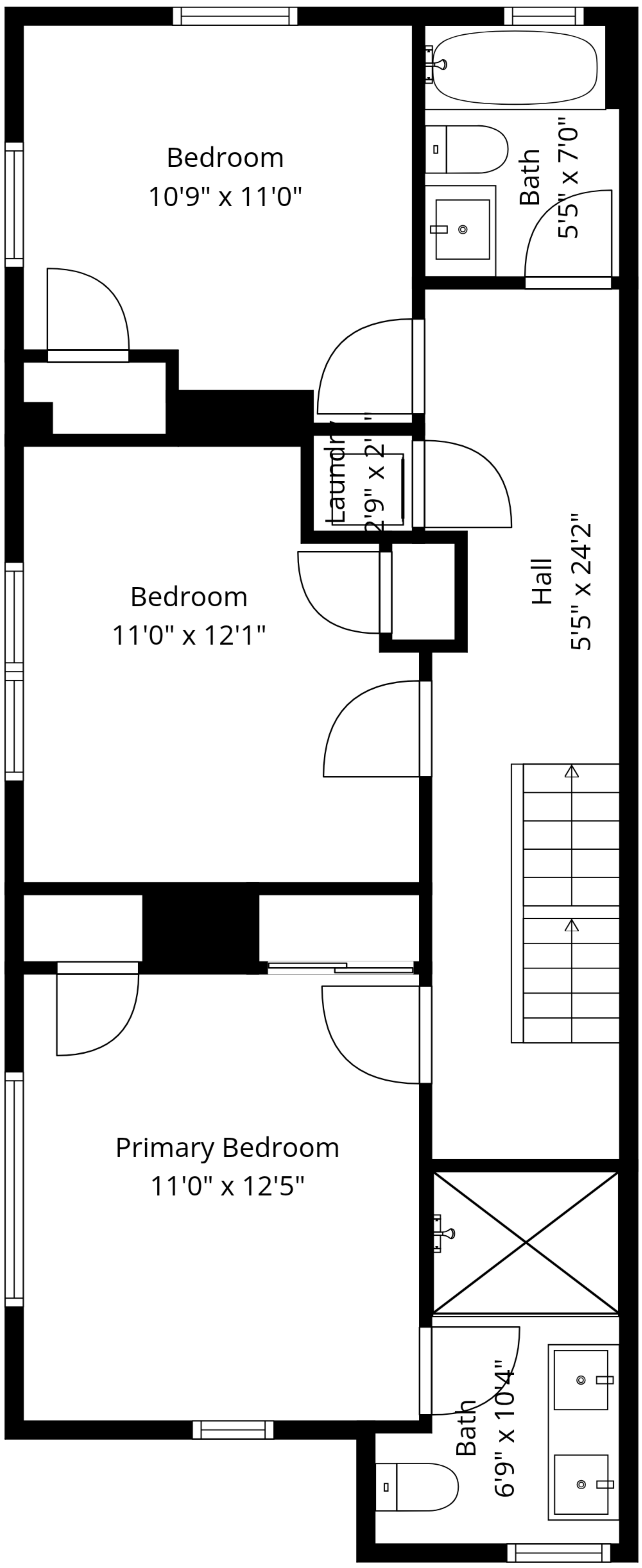
Basement: 691 sq. ft, 1st floor: 756 sq. ft, 2nd floor: 663 sq. ft, 3rd floor: 448 sq. ft
EXCLUDED AREAS: PORCH: 153 sq. ft, PATIO: 406 sq. ft, LOW CEILING: 124 sq. ft,
WALLS: 252 sq. ft



TOTAL: 2558 sq. ft

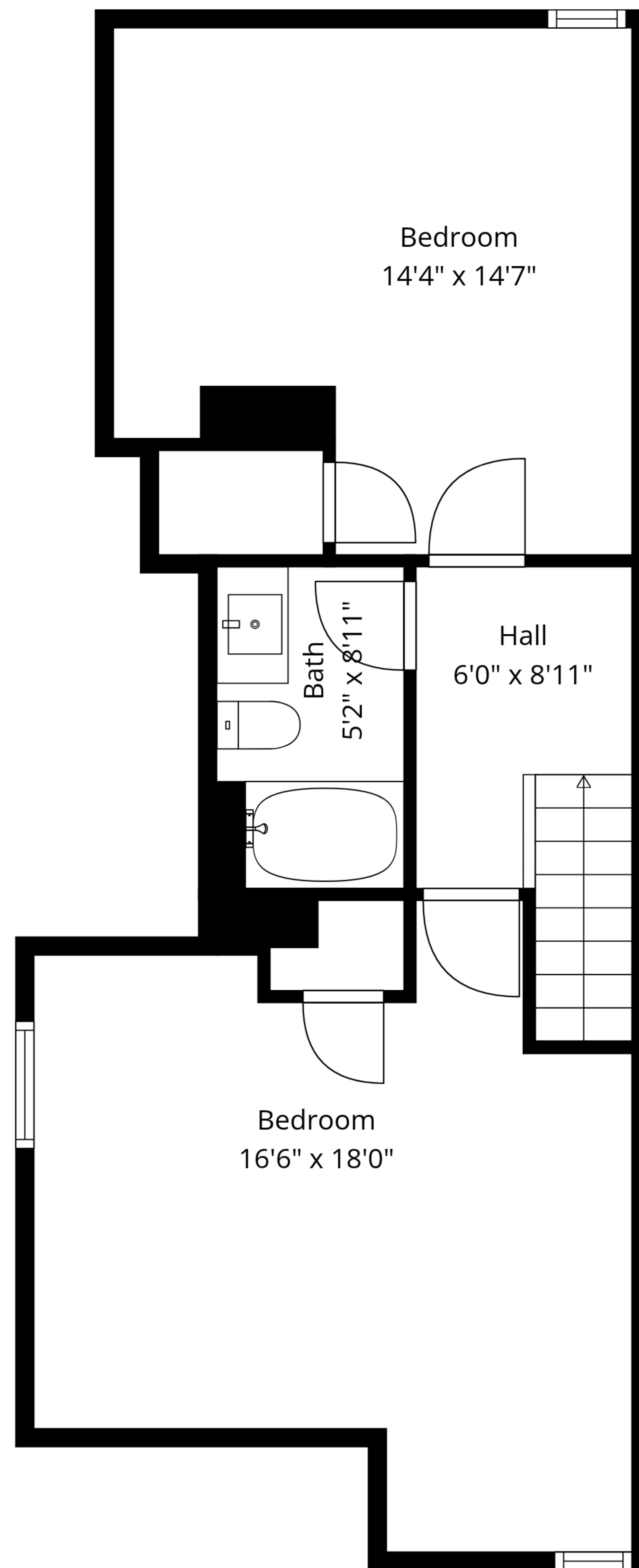
Basement: 691 sq. ft, 1st floor: 756 sq. ft, 2nd floor: 663 sq. ft, 3rd floor: 448 sq. ft
 EXCLUDED AREAS: PORCH: 153 sq. ft, PATIO: 406 sq. ft, LOW CEILING: 124 sq. ft,
 WALLS: 252 sq. ft

Measurements Are Approximate - Deemed Highly Reliable But Not Guaranteed



TOTAL: 2558 sq. ft

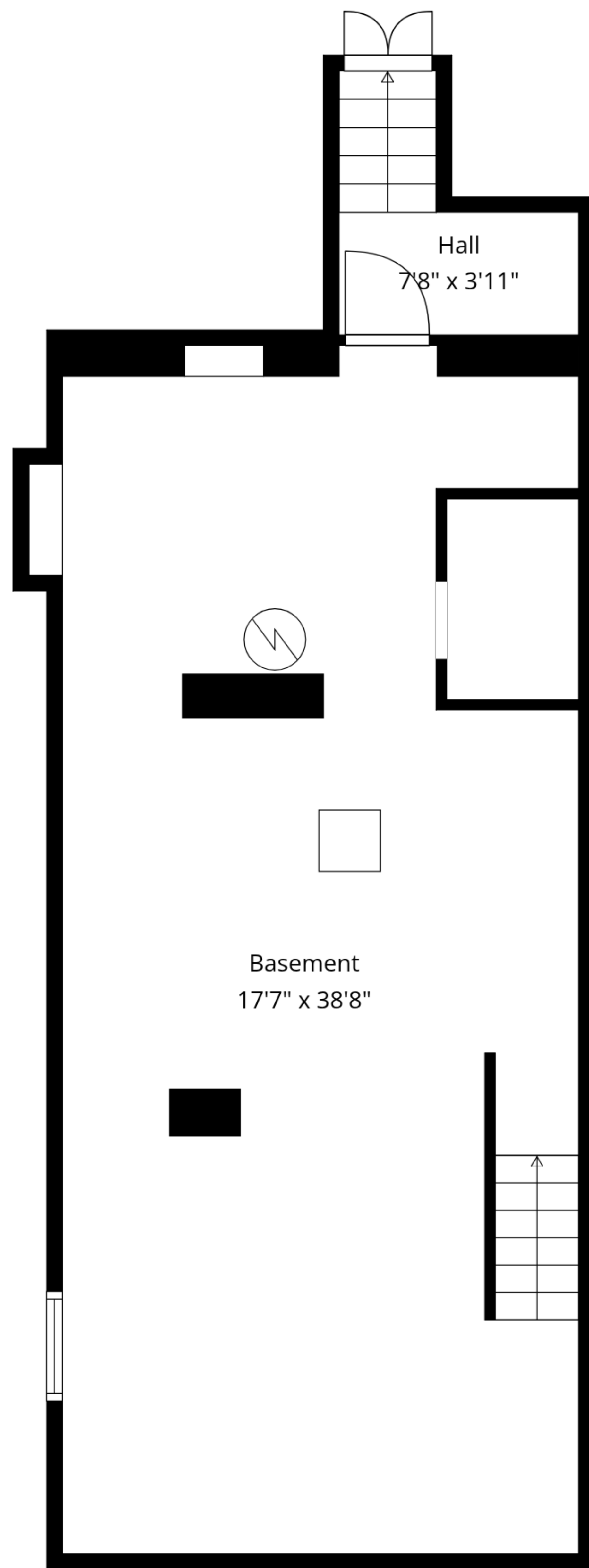
Basement: 691 sq. ft, 1st floor: 756 sq. ft, 2nd floor: 663 sq. ft, 3rd floor: 448 sq. ft
 EXCLUDED AREAS: PORCH: 153 sq. ft, PATIO: 406 sq. ft, LOW CEILING: 124 sq. ft,
 WALLS: 252 sq. ft



TOTAL: 2558 sq. ft

Basement: 691 sq. ft, 1st floor: 756 sq. ft, 2nd floor: 663 sq. ft, 3rd floor: 448 sq. ft
EXCLUDED AREAS: PORCH: 153 sq. ft, PATIO: 406 sq. ft, LOW CEILING: 124 sq. ft,
WALLS: 252 sq. ft

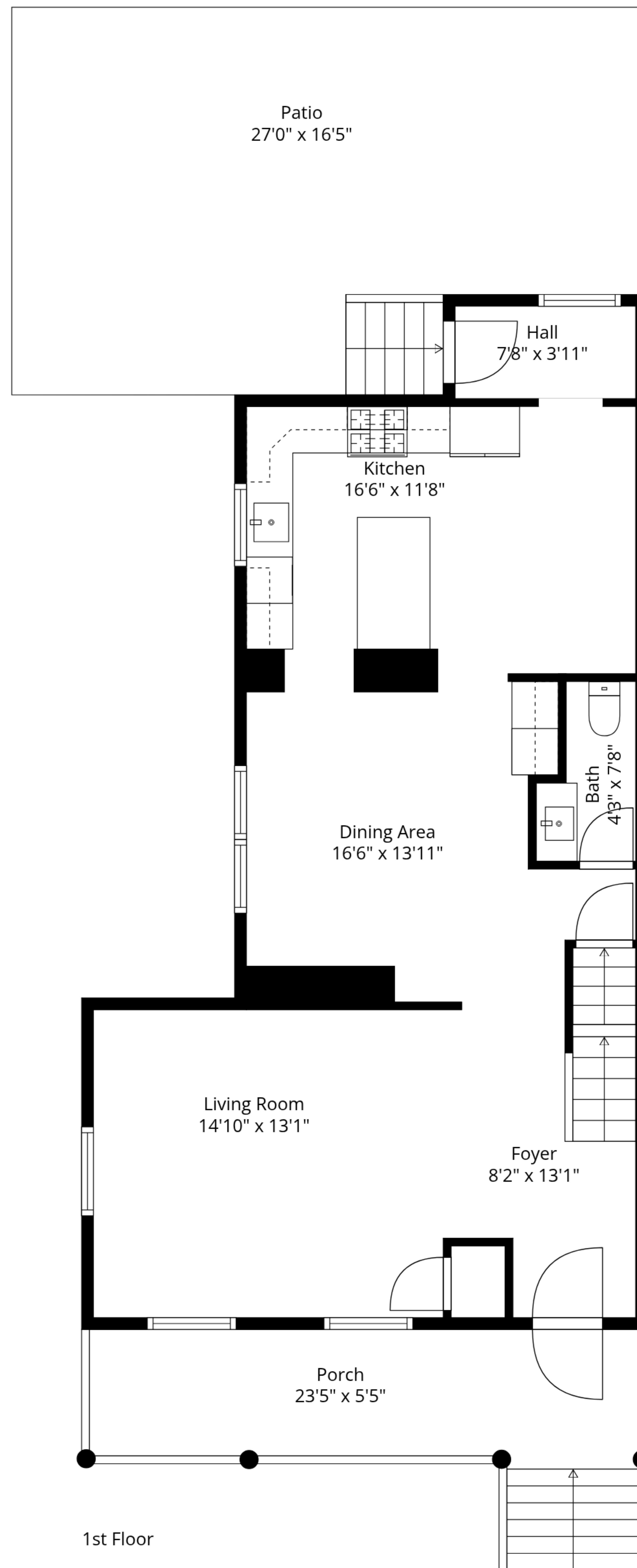
Measurements Are Approximate - Deemed Highly Reliable But Not Guaranteed



Basement

Basement
17'7" x 38'8"

Hall
7'8" x 3'11"



1st Floor

Porch
23'5" x 5'5"

Living Room
14'10" x 13'1"

Foyer
8'2" x 13'1"

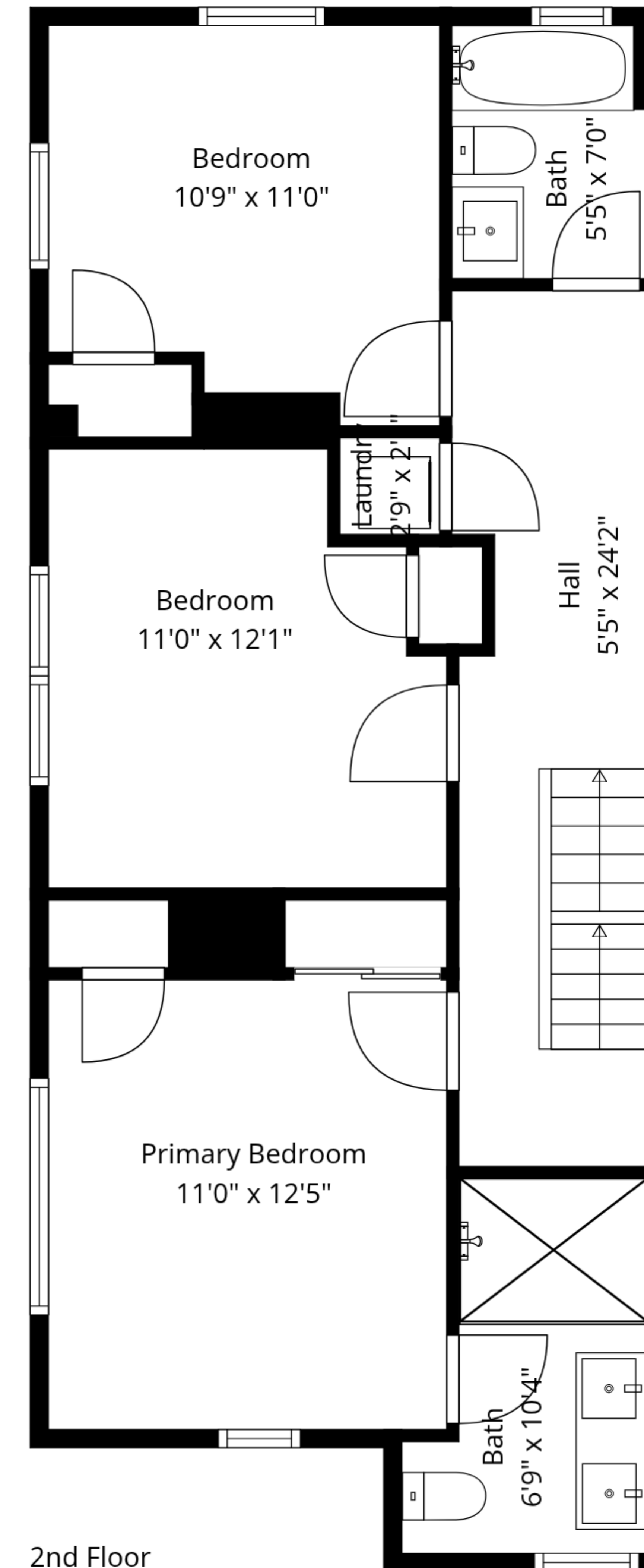
Dining Area
16'6" x 13'11"

Bath
4'3" x 7'8"

Kitchen
16'6" x 11'8"

Hall
7'8" x 3'11"

Patio
27'0" x 16'5"



2nd Floor

Primary Bedroom
11'0" x 12'5"

Bedroom
11'0" x 12'1"

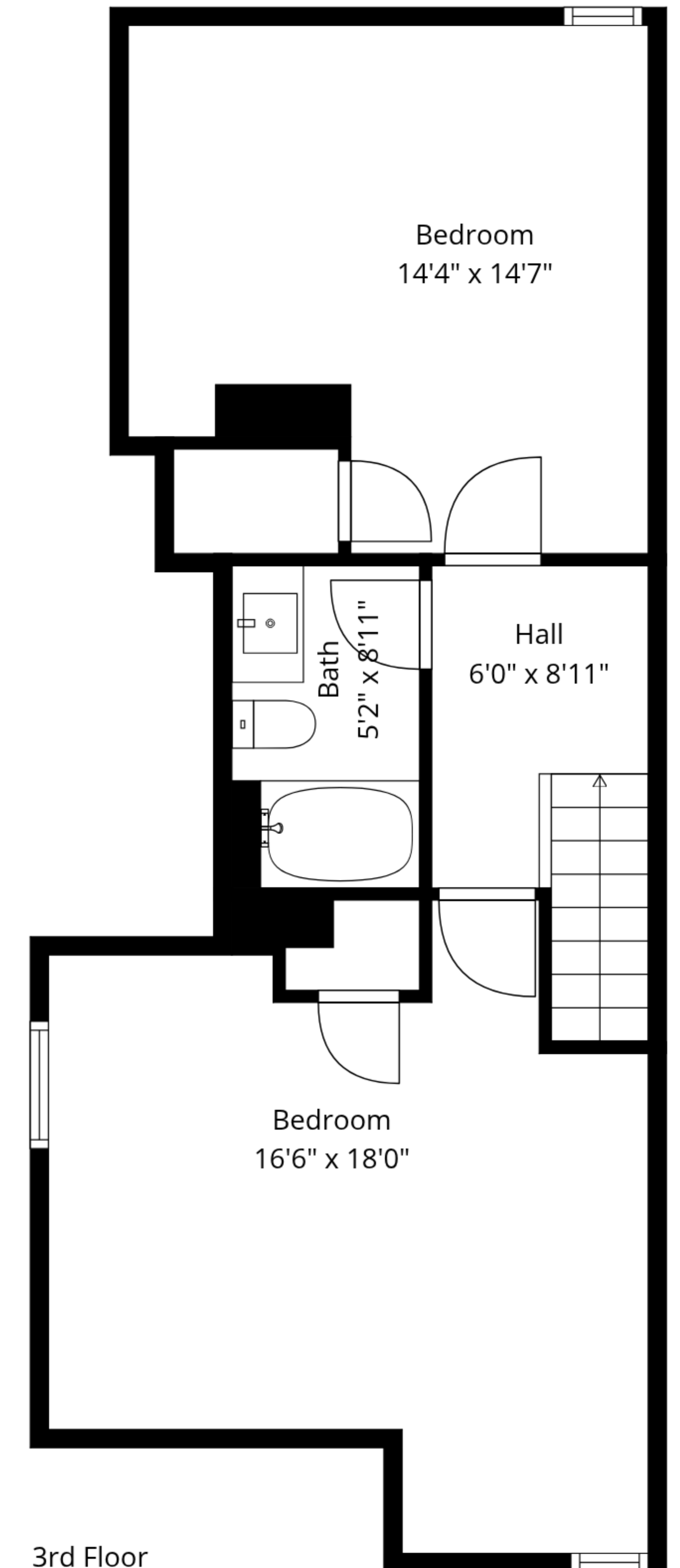
Bedroom
10'9" x 11'0"

Laundry
7'9" x 7'2"

Hall
5'5" x 24'2"

Bath
5'5" x 7'0"

Bath
6'9" x 10'4"



3rd Floor

Bedroom
16'6" x 18'0"

Bath
5'2" x 8'11"

Hall
6'0" x 8'11"

Bedroom
14'4" x 14'7"

TOTAL: 2558 sq. ft
 Basement: 691 sq. ft, 1st floor: 756 sq. ft, 2nd floor: 663 sq. ft, 3rd floor: 448 sq. ft
 EXCLUDED AREAS: PORCH: 153 sq. ft, PATIO: 406 sq. ft, LOW CEILING: 124 sq. ft,
 WALLS: 252 sq. ft