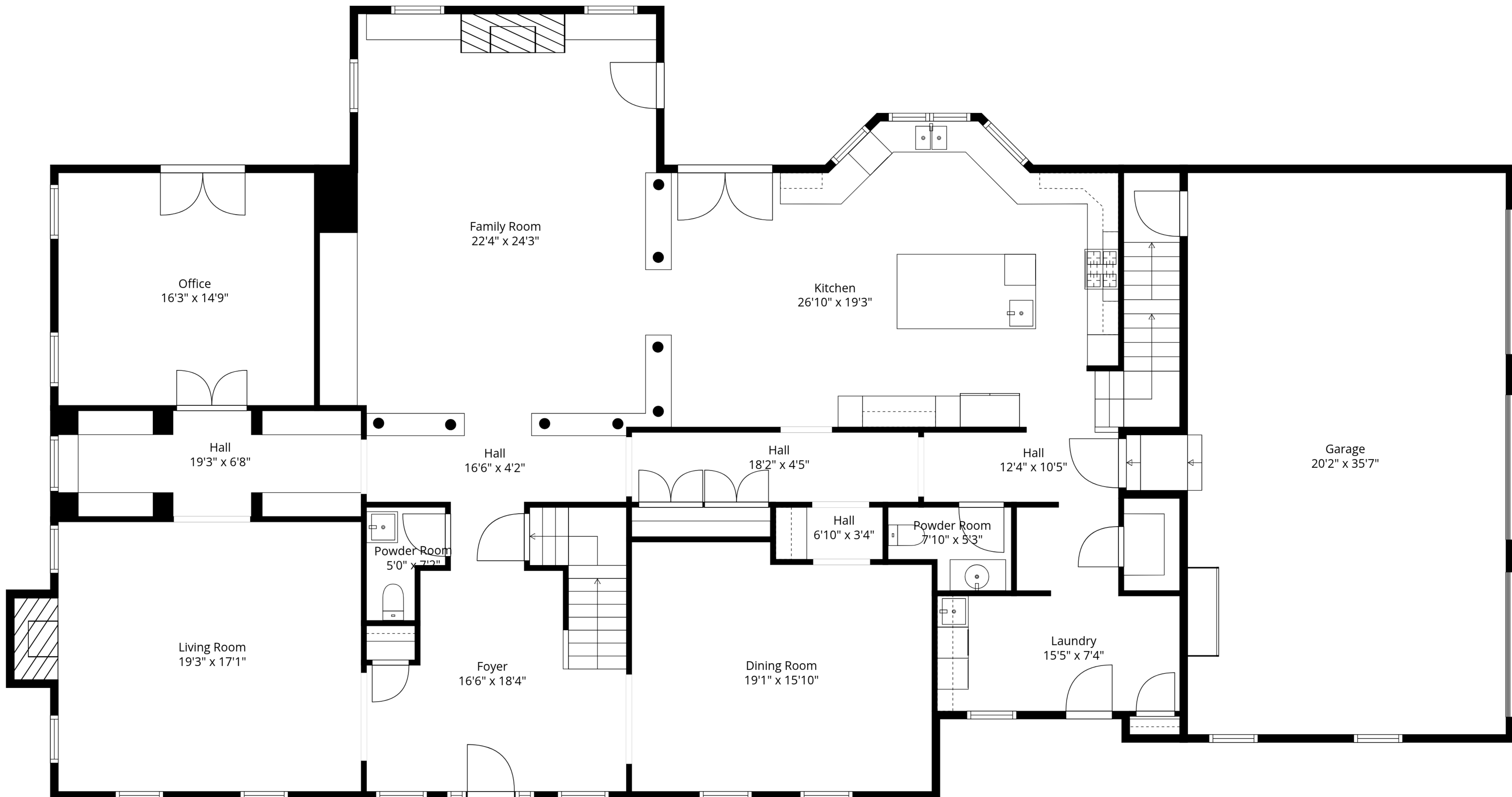


TOTAL: 8900 sq. ft

Basement: 1613 sq. ft, 1st floor: 3659 sq. ft, 2nd floor: 3628 sq. ft, 3rd floor: 0 sq. ft
 EXCLUDED AREAS: UTILITY: 316 sq. ft, STORAGE: 201 sq. ft, BASEMENT: 414 sq. ft,
 FIREPLACE: 34 sq. ft, BALCONY: 81 sq. ft, OPEN TO BELOW: 81 sq. ft,
 BAY WINDOW: 23 sq. ft, ATTIC: 1669 sq. ft, WALLS: 524 sq. ft



TOTAL: 8900 sq. ft

Basement: 1613 sq. ft, 1st floor: 3659 sq. ft, 2nd floor: 3628 sq. ft, 3rd floor: 0 sq. ft
 EXCLUDED AREAS: UTILITY: 316 sq. ft, STORAGE: 201 sq. ft, BASEMENT: 414 sq. ft,
 FIREPLACE: 34 sq. ft, BALCONY: 81 sq. ft, OPEN TO BELOW: 81 sq. ft,
 BAY WINDOW: 23 sq. ft, ATTIC: 1669 sq. ft, WALLS: 524 sq. ft

Measurements Are Approximate - Deemed Highly Reliable But Not Guaranteed

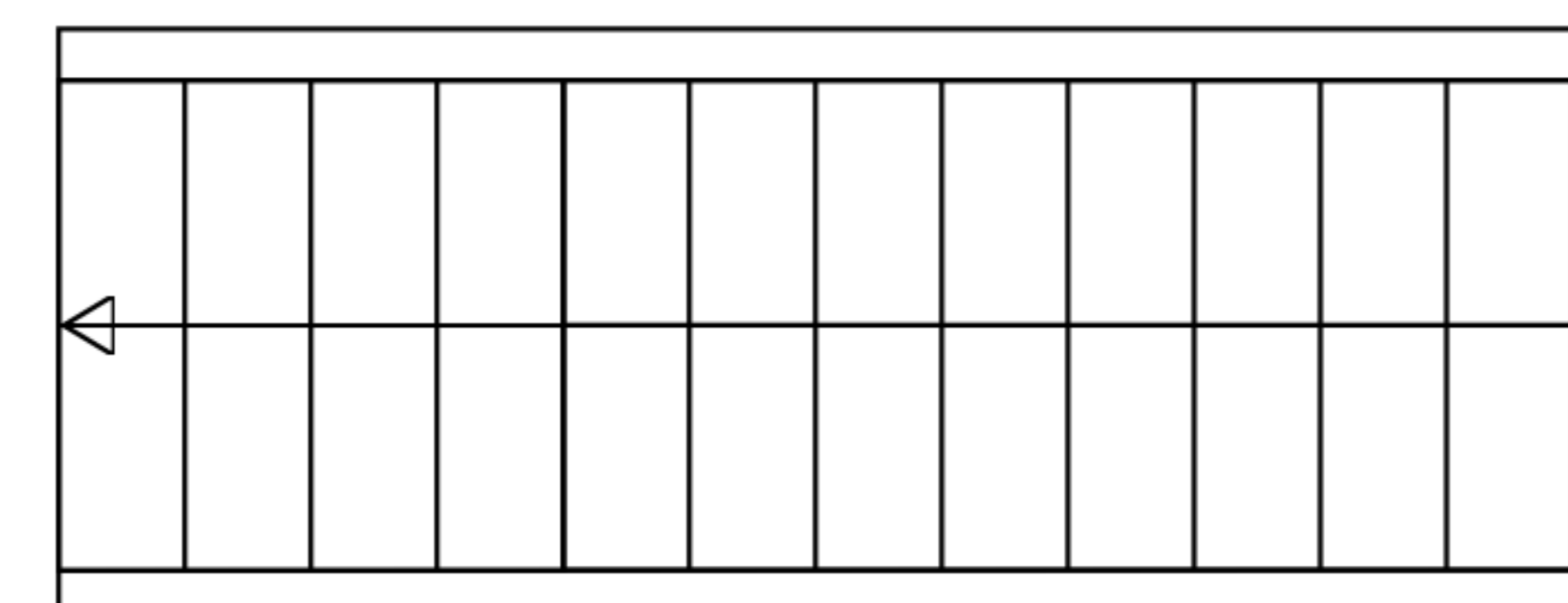


TOTAL: 8900 sq. ft

Basement: 1613 sq. ft, 1st floor: 3659 sq. ft, 2nd floor: 3628 sq. ft, 3rd floor: 0 sq. ft
 EXCLUDED AREAS: UTILITY: 316 sq. ft, STORAGE: 201 sq. ft, BASEMENT: 414 sq. ft,
 FIREPLACE: 34 sq. ft, BALCONY: 81 sq. ft, OPEN TO BELOW: 81 sq. ft,
 BAY WINDOW: 23 sq. ft, ATTIC: 1669 sq. ft, WALLS: 524 sq. ft

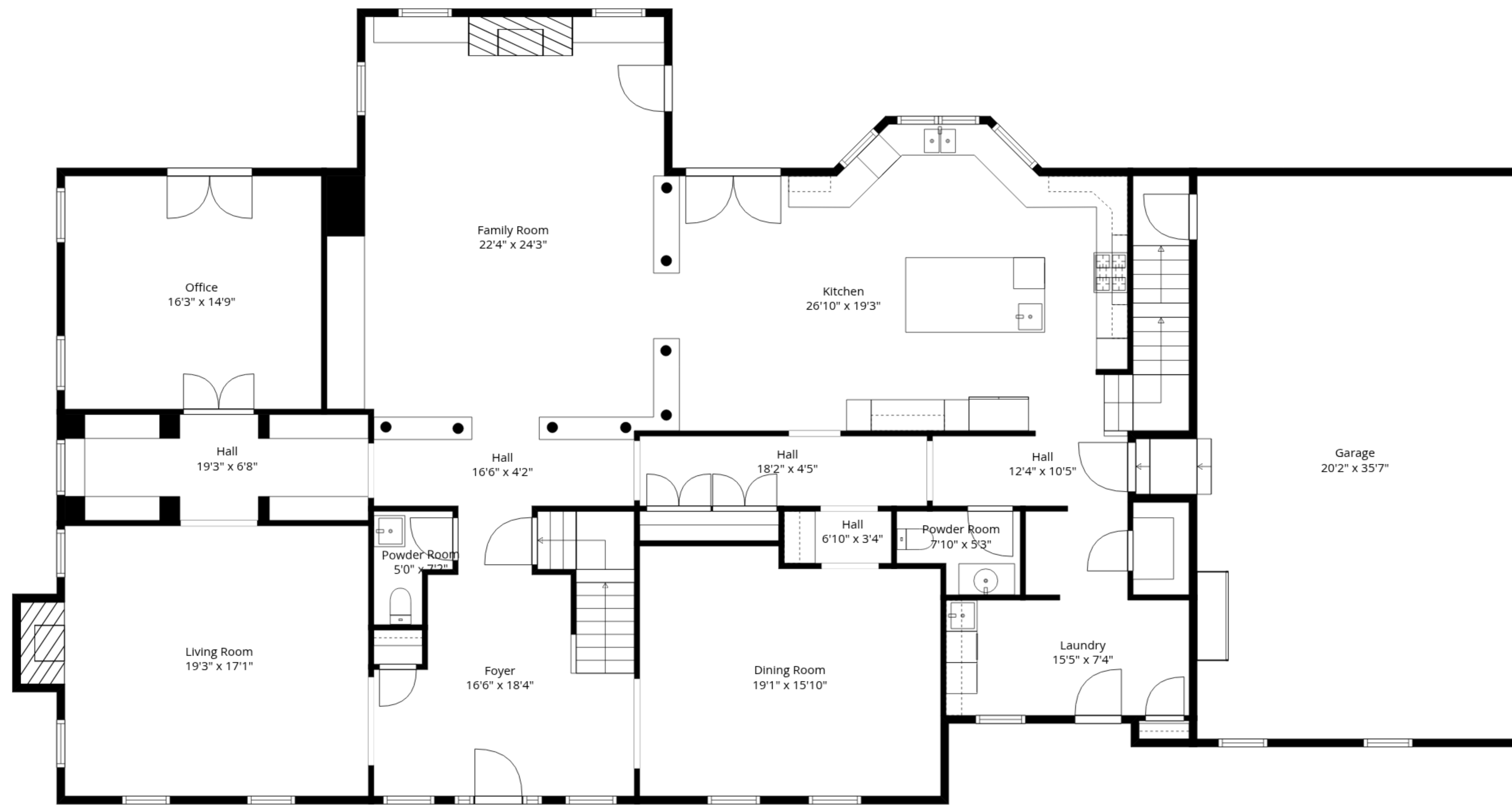


Attic
55'5" x 30'1"

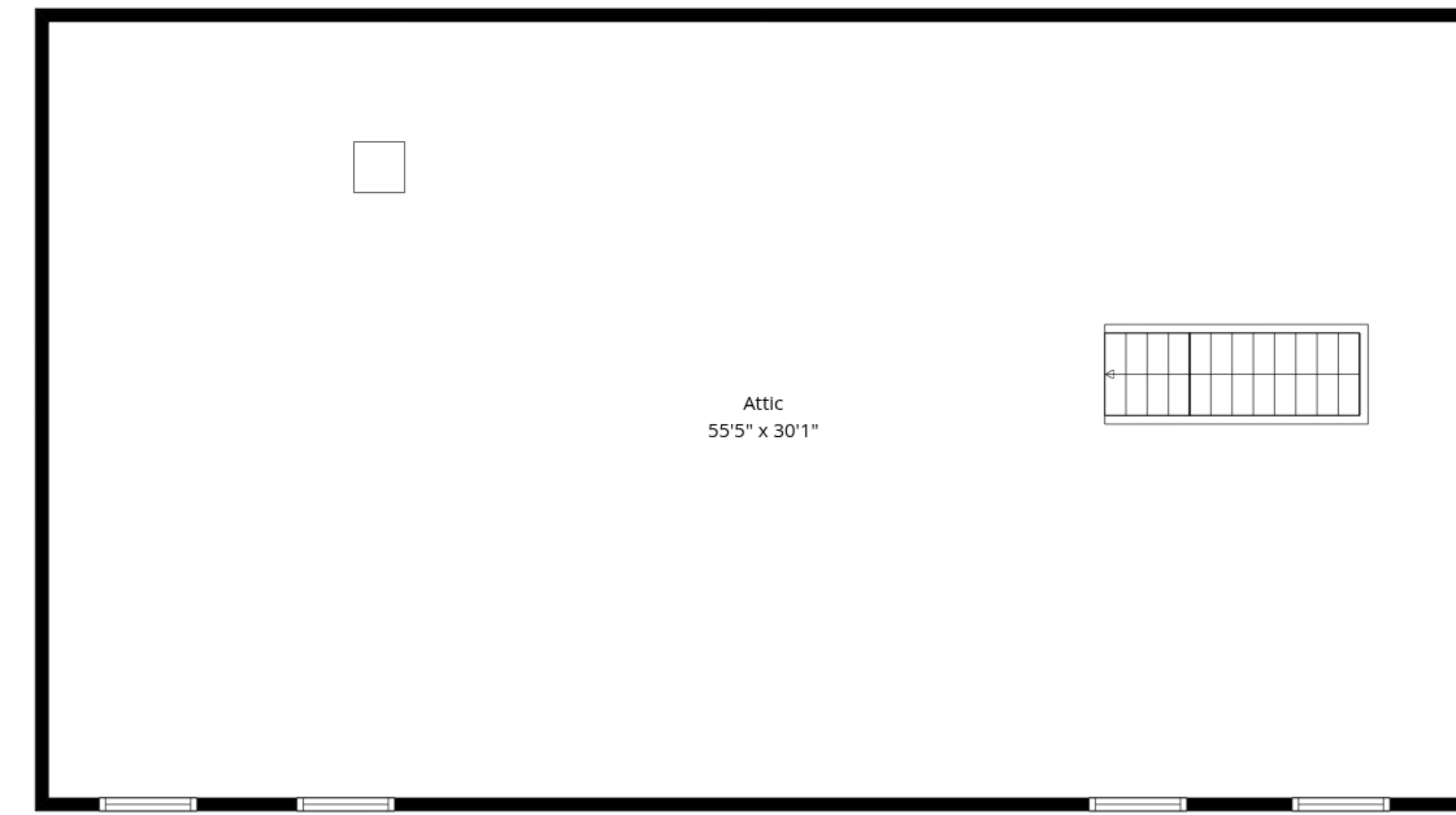


TOTAL: 8900 sq. ft

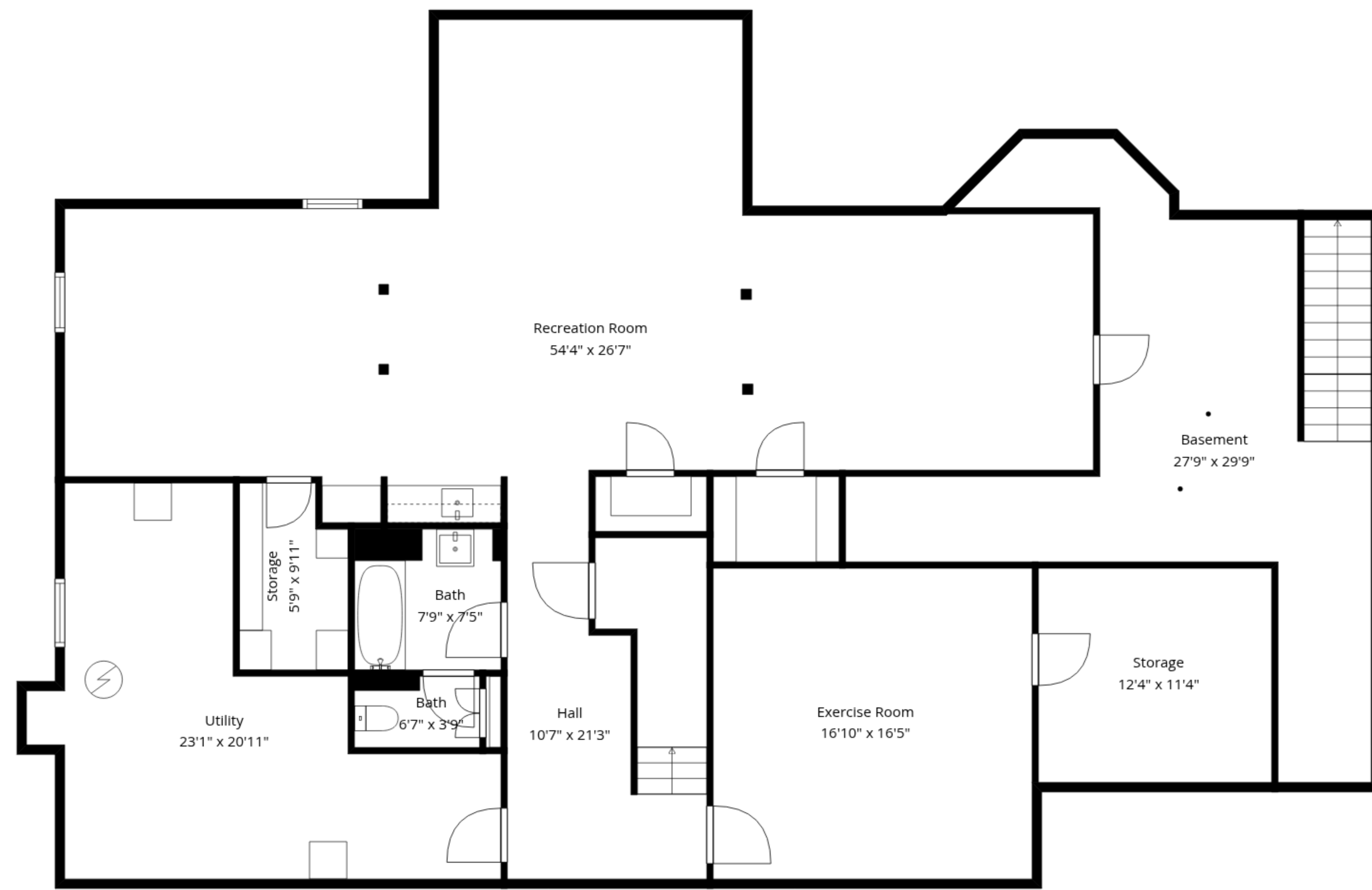
Basement: 1613 sq. ft, 1st floor: 3659 sq. ft, 2nd floor: 3628 sq. ft, 3rd floor: 0 sq. ft
EXCLUDED AREAS: UTILITY: 316 sq. ft, STORAGE: 201 sq. ft, BASEMENT: 414 sq. ft,
FIREPLACE: 34 sq. ft, BALCONY: 81 sq. ft, OPEN TO BELOW: 81 sq. ft,
BAY WINDOW: 23 sq. ft, ATTIC: 1669 sq. ft, WALLS: 524 sq. ft



1st Floor



3rd Floor



Basement



2nd Floor

TOTAL: 8900 sq. ft

Basement: 1613 sq. ft, 1st floor: 3659 sq. ft, 2nd floor: 3628 sq. ft, 3rd floor: 0 sq. ft
 EXCLUDED AREAS: UTILITY: 316 sq. ft, STORAGE: 201 sq. ft, BASEMENT: 414 sq. ft,
 FIREPLACE: 34 sq. ft, BALCONY: 81 sq. ft, OPEN TO BELOW: 81 sq. ft,
 BAY WINDOW: 23 sq. ft, ATTIC: 1669 sq. ft, WALLS: 524 sq. ft