

Home data report

2149 Rolling Valley Dr, Germantown, TN, US




Total Area: 2376 sq. ft

1st Floor: 1779 sq. ft, 2nd Floor: 597 sq. ft

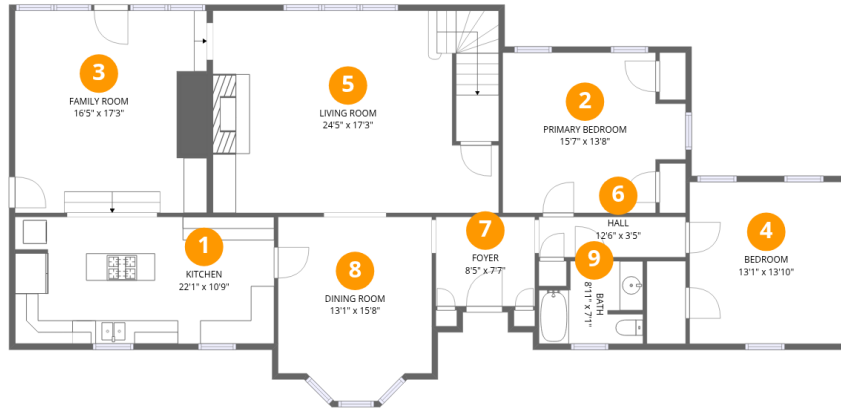
Excluded: Walls: 166 sq. ft

Property summary

 **2** Floors

 **4** Bedrooms

 **2** Bathrooms

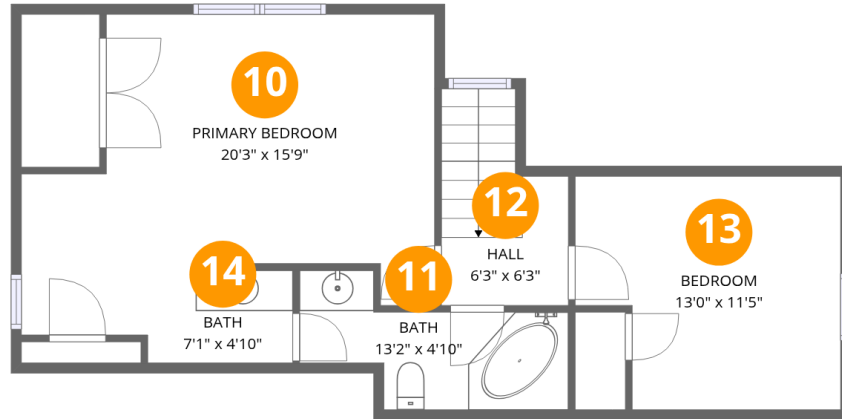


Room dimensions

Floor 1

Total: 1779 sqft Excluded: 0 sqft

#		Dimensions	sqft	Counted as living area
1	Kitchen	22'1" x 10'9"	238 sq. ft	Yes
2	Primary Bedroom	15'7" x 13'8"	191 sq. ft	Yes
3	Family Room	16'5" x 17'3"	264 sq. ft	Yes
4	Bedroom	13'1" x 13'10"	181 sq. ft	Yes
5	Living Room	24'5" x 17'3"	417 sq. ft	Yes
6	Hall	12'6" x 3'5"	43 sq. ft	Yes
7	Foyer	8'5" x 7'7"	64 sq. ft	Yes
8	Dining Room	13'1" x 15'8"	189 sq. ft	Yes
9	Bath	8'11" x 7'1"	55 sq. ft	Yes



Room dimensions

Floor 2

Total: 597 sqft

Excluded: 0 sqft

#		Dimensions	sqft	Counted as living area
10	Primary Bedroom	20'3" x 15'9"	242 sq. ft	Yes
11	Bath	13'2" x 4'10"	61 sq. ft	Yes
12	Hall	6'3" x 6'3"	55 sq. ft	Yes
13	Bedroom	13'0" x 11'5"	135 sq. ft	Yes
14	Bath	7'1" x 4'10"	33 sq. ft	Yes

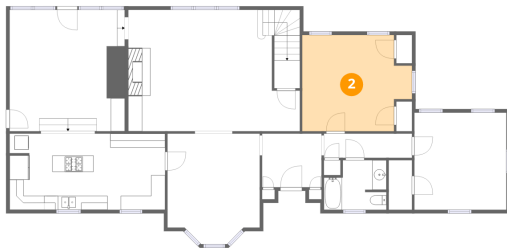
1 Floor 1 - Kitchen



Dimensions: 22'1" x 10'9"
Area: 238 sq. ft
Counted as living area: Yes

Heated: Yes
Finished: Yes
Enclosed: Yes
Contiguous: Yes
Permitted: Yes
Wet space: No
Addition: No
Conversion: No

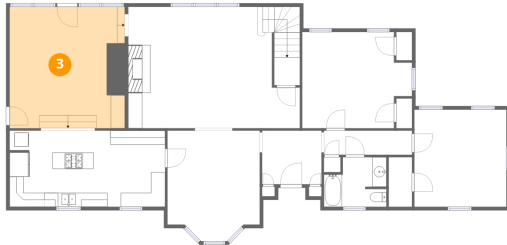
2 Floor 1 - Primary Bedroom



Dimensions: 15'7" x 13'8"
Area: 191 sq. ft
Counted as living area: Yes

Heated: Yes
Finished: Yes
Enclosed: Yes
Contiguous: Yes
Permitted: Yes
Wet space: No
Addition: No
Conversion: No

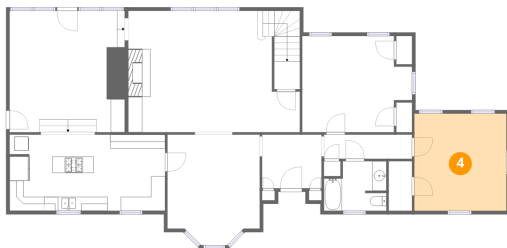
3 Floor 1 - Family Room



Dimensions: 16'5" x 17'3"
Area: 264 sq. ft
Counted as living area: Yes

Heated: Yes
Finished: Yes
Enclosed: Yes
Contiguous: Yes
Permitted: Yes
Wet space: No
Addition: No
Conversion: No

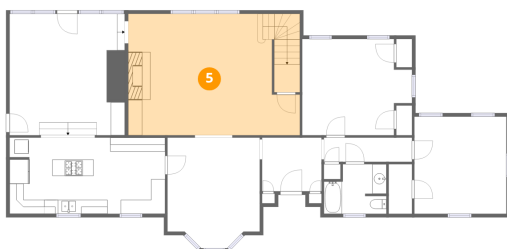
4 Floor 1 - Bedroom



Dimensions: 13'1" x 13'10"
Area: 181 sq. ft
Counted as living area: Yes

Heated: Yes
Finished: Yes
Enclosed: Yes
Contiguous: Yes
Permitted: Yes
Wet space: No
Addition: No
Conversion: No

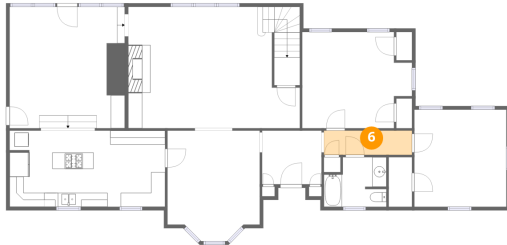
5 Floor 1 - Living Room



Dimensions: 24'5" x 17'3"
Area: 417 sq. ft
Counted as living area: Yes

Heated: Yes
Finished: Yes
Enclosed: Yes
Contiguous: Yes
Permitted: Yes
Wet space: No
Addition: No
Conversion: No

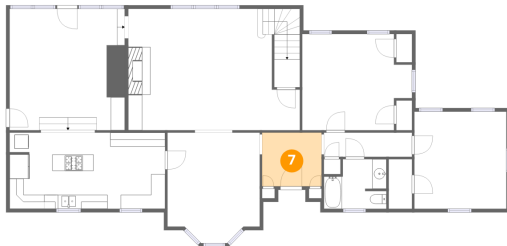
6 Floor 1 - Hall



Dimensions: 12'6" x 3'5"
Area: 43 sq. ft
Counted as living area: Yes

Heated: Yes
Finished: Yes
Enclosed: Yes
Contiguous: Yes
Permitted: Yes
Wet space: No
Addition: No
Conversion: No

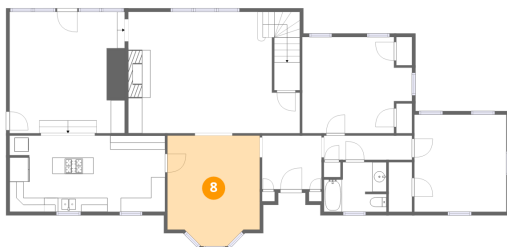
7 Floor 1 - Foyer



Dimensions: 8'5" x 7'7"
Area: 64 sq. ft
Counted as living area: Yes

Heated: Yes
Finished: Yes
Enclosed: Yes
Contiguous: Yes
Permitted: Yes
Wet space: No
Addition: No
Conversion: No

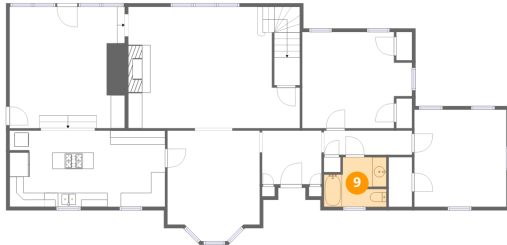
8 Floor 1 - Dining Room



Dimensions: 13'1" x 15'8"
Area: 189 sq. ft
Counted as living area: Yes

Heated: Yes
Finished: Yes
Enclosed: Yes
Contiguous: Yes
Permitted: Yes
Wet space: No
Addition: No
Conversion: No

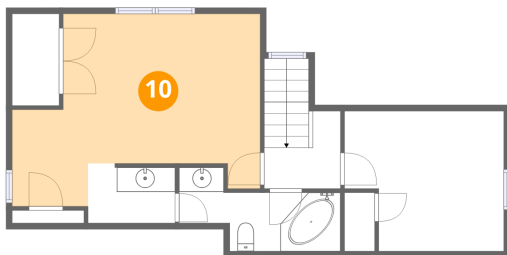
9 Floor 1 - Bath



Dimensions: 8'11" x 7'1"
Area: 55 sq. ft
Counted as living area: Yes

Heated: Yes
Finished: Yes
Enclosed: Yes
Contiguous: Yes
Permitted: Yes
Wet space: Yes
Addition: No
Conversion: No

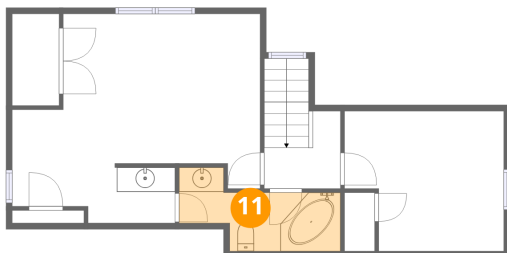
10 Floor 2 - Primary Bedroom



Dimensions: 20'3" x 15'9"
Area: 242 sq. ft
Counted as living area: Yes

Heated: Yes
Finished: Yes
Enclosed: Yes
Contiguous: Yes
Permitted: Yes
Wet space: No
Addition: No
Conversion: No

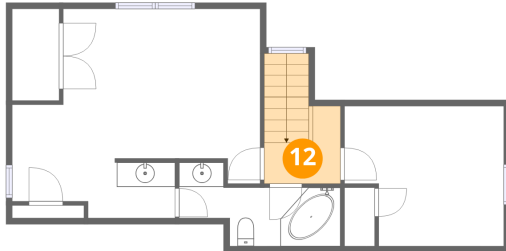
11 Floor 2 - Bath



Dimensions: 13'2" x 4'10"
Area: 61 sq. ft
Counted as living area: Yes

Heated: Yes
Finished: Yes
Enclosed: Yes
Contiguous: Yes
Permitted: Yes
Wet space: Yes
Addition: No
Conversion: No

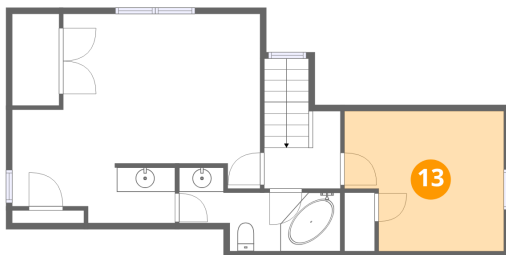
12 Floor 2 - Hall



Dimensions: 6'3" x 6'3"
Area: 55 sq. ft
Counted as living area: Yes

Heated: Yes
Finished: Yes
Enclosed: Yes
Contiguous: Yes
Permitted: Yes
Wet space: No
Addition: No
Conversion: No

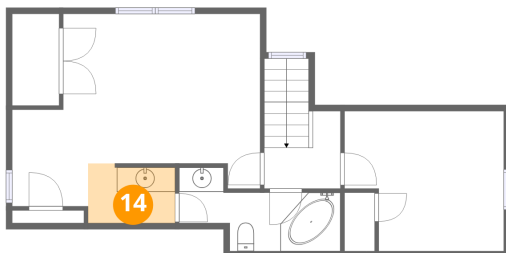
13 Floor 2 - Bedroom



Dimensions: 13'0" x 11'5"
Area: 135 sq. ft
Counted as living area: Yes

Heated: Yes
Finished: Yes
Enclosed: Yes
Contiguous: Yes
Permitted: Yes
Wet space: No
Addition: No
Conversion: No

14 Floor 2 - Bath



Dimensions: 7'1" x 4'10"
Area: 33 sq. ft
Counted as living area: Yes

Heated: Yes
Finished: Yes
Enclosed: Yes
Contiguous: Yes
Permitted: Yes
Wet space: Yes
Addition: No
Conversion: No