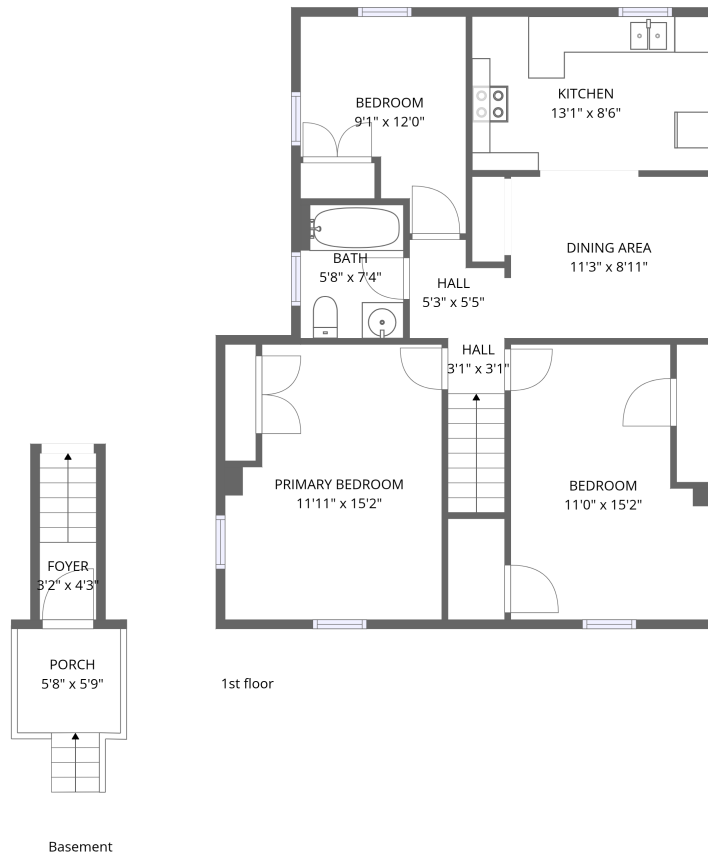


Home data report

303 N Front St, apt b, Seaford, DE, United States, apt b




Total Area: 844 sq. ft

Basement: 29 sq. ft, 1st Floor: 815 sq. ft

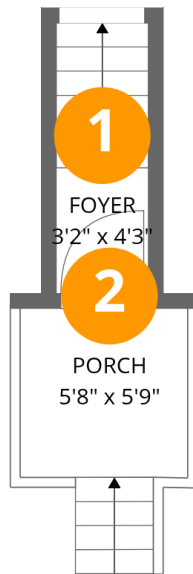
Excluded: Porch 41 sq. ft, Walls: 0 sq. ft

Property summary

 **2** Floors

 **3** Bedrooms

 **1** Bathrooms



Room dimensions

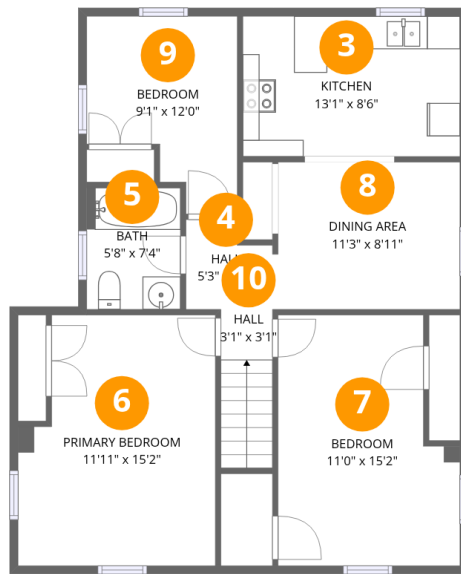
Floor 1 Below grade

Total: 29sqft Excluded: 41sqft

#		Dimensions	sqft	Counted as living area
1	Foyer	3'2" x 4'3"	29 sq. ft	Yes
2	Porch	5'8" x 5'9"	41 sq. ft	No

Home data report

303 N Front St, apt b, Seaford, DE, United States, apt b



Room dimensions

Floor 2

Total: 815 sqft Excluded: 0 sqft

#		Dimensions	sqft	Counted as living area
3	Kitchen	13'1" x 8'6"	112 sq. ft	Yes
4	Hall	5'3" x 5'5"	25 sq. ft	Yes
5	Bath	5'8" x 7'4"	42 sq. ft	Yes
6	Primary Bedroom	11'11" x 15'2"	168 sq. ft	Yes
7	Bedroom	11'0" x 15'2"	150 sq. ft	Yes
8	Dining Area	11'3" x 8'11"	99 sq. ft	Yes
9	Bedroom	9'1" x 12'0"	87 sq. ft	Yes
10	Hall	3'1" x 3'1"	30 sq. ft	Yes

1 Floor 1 - Foyer



Dimensions: 3'2" x 4'3"
Area: 29 sq. ft
Counted as living area: Yes

Heated: Yes
Finished: Yes
Enclosed: Yes
Contiguous: Yes
Permitted: Yes
Wet space: No
Addition: No
Conversion: No

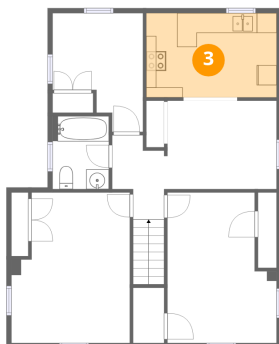
2 Floor 1 - Porch



Dimensions: 5'8" x 5'9"
Area: 41 sq. ft
Counted as living area: No

Heated: No
Finished: No
Enclosed: No
Contiguous: Yes
Permitted: Yes
Wet space: No
Addition: No
Conversion: No

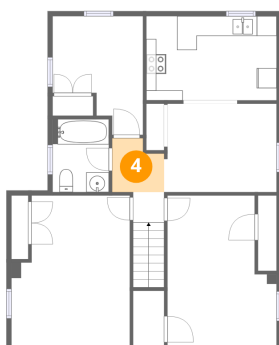
3 Floor 2 - Kitchen



Dimensions: 13'1" x 8'6"
Area: 112 sq. ft
Counted as living area: Yes

Heated: Yes
Finished: Yes
Enclosed: Yes
Contiguous: Yes
Permitted: Yes
Wet space: No
Addition: No
Conversion: No

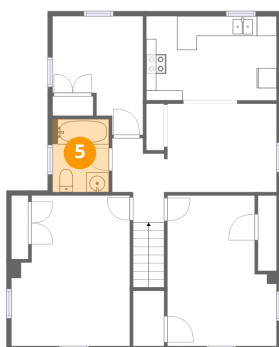
4 Floor 2 - Hall



Dimensions: 5'3" x 5'5"
Area: 25 sq. ft
Counted as living area: Yes

Heated: Yes
Finished: Yes
Enclosed: Yes
Contiguous: Yes
Permitted: Yes
Wet space: No
Addition: No
Conversion: No

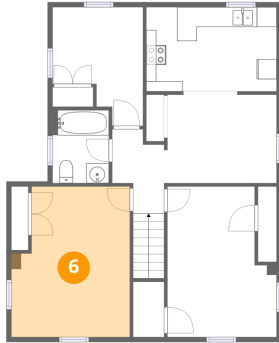
5 Floor 2 - Bath



Dimensions: 5'8" x 7'4"
Area: 42 sq. ft
Counted as living area: Yes

Heated: Yes
Finished: Yes
Enclosed: Yes
Contiguous: Yes
Permitted: Yes
Wet space: Yes
Addition: No
Conversion: No

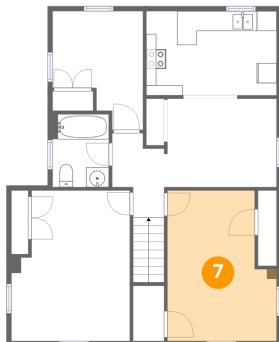
6 Floor 2 - Primary Bedroom



Dimensions: 11'11" x 15'2"
Area: 168 sq. ft
Counted as living area: Yes

Heated: Yes
Finished: Yes
Enclosed: Yes
Contiguous: Yes
Permitted: Yes
Wet space: No
Addition: No
Conversion: No

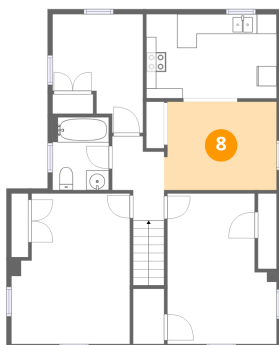
7 Floor 2 - Bedroom



Dimensions: 11'0" x 15'2"
Area: 150 sq. ft
Counted as living area: Yes

Heated: Yes
Finished: Yes
Enclosed: Yes
Contiguous: Yes
Permitted: Yes
Wet space: No
Addition: No
Conversion: No

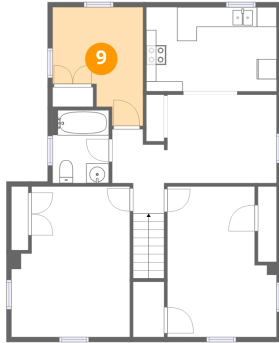
8 Floor 2 - Dining Area



Dimensions: 11'3" x 8'11"
Area: 99 sq. ft
Counted as living area: Yes

Heated: Yes
Finished: Yes
Enclosed: Yes
Contiguous: Yes
Permitted: Yes
Wet space: No
Addition: No
Conversion: No

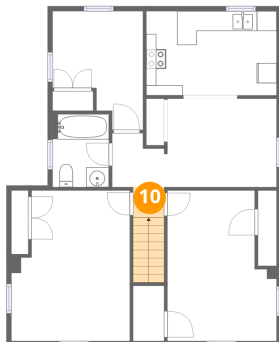
9 Floor 2 - Bedroom



Dimensions: 9'1" x 12'0"
Area: 87 sq. ft
Counted as living area: Yes

Heated: Yes
Finished: Yes
Enclosed: Yes
Contiguous: Yes
Permitted: Yes
Wet space: No
Addition: No
Conversion: No

10 Floor 2 - Hall



Dimensions: 3'1" x 3'1"
Area: 30 sq. ft
Counted as living area: Yes

Heated: Yes
Finished: Yes
Enclosed: Yes
Contiguous: Yes
Permitted: Yes
Wet space: No
Addition: No
Conversion: No