

Home data report

6595 Bray Rd, Tuscola, MI, US



Total Area: 2069 sq. ft

Basement: 586 sq. ft, 1st Floor: 1483 sq. ft

Excluded: Utility 82 sq. ft, Garage 389 sq. ft, Screened porch 318 sq. ft, Fireplace 10 sq. ft, Walls: 228 sq. ft

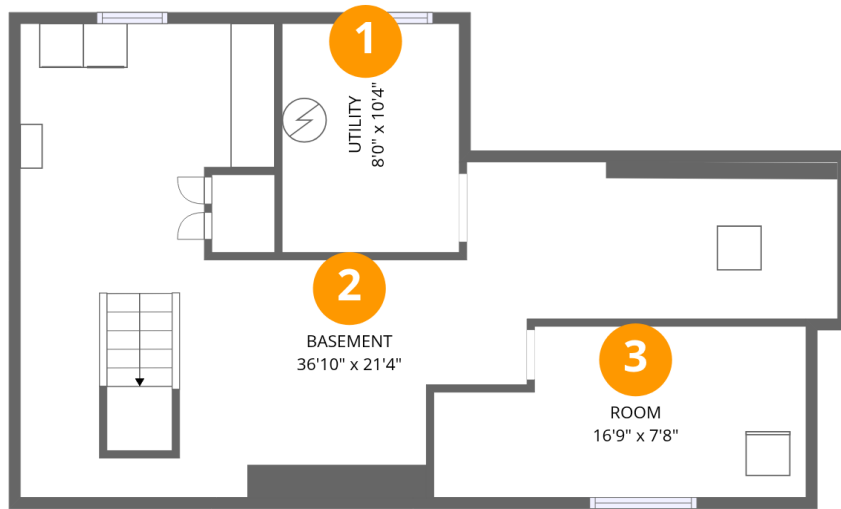
Property summary

 **2** Floors

 **3** Bedrooms

 **1** Bathrooms

 **1** Garages



Room dimensions

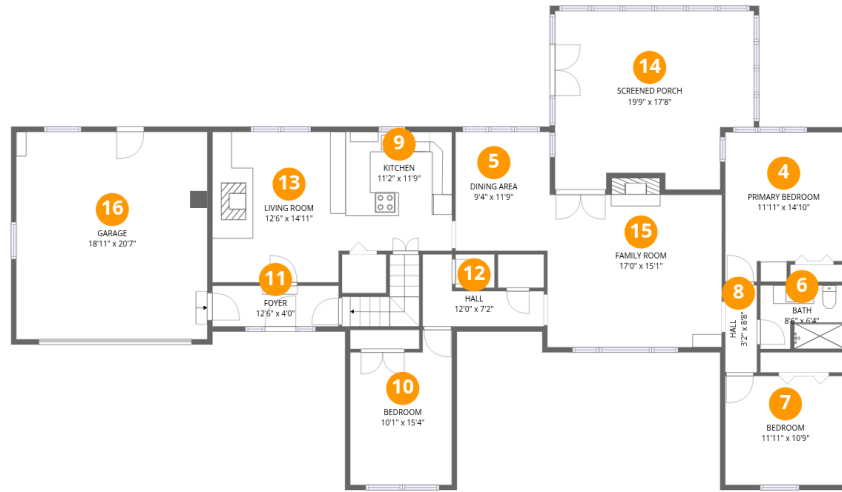
Floor 1 Below grade

Total:586sqft Excluded: 82sqft

#		Dimensions	sqft	Counted as living area
1	Utility	8'0" x 10'4"	82 sq. ft	No
2	Basement	36'10" x 21'4"	441 sq. ft	Yes
3	Room	16'9" x 7'8"	116 sq. ft	Yes

Home data report

6595 Bray Rd, Tuscola, MI, US



Room dimensions

Floor 2

Total: 1483sqft Excluded: 717sqft

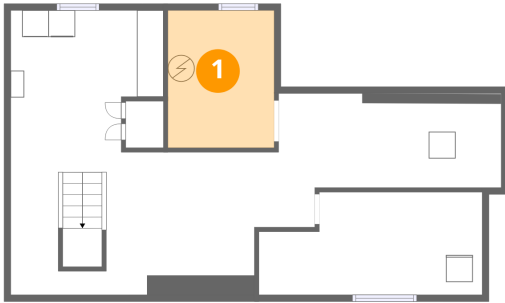
#		Dimensions	sqft	Counted as living area
4	Primary Bedroom	11'11" x 14'10"	164 sq. ft	Yes
5	Dining Area	9'4" x 11'9"	110 sq. ft	Yes
6	Bath	8'6" x 6'4"	52 sq. ft	Yes
7	Bedroom	11'11" x 10'9"	129 sq. ft	Yes
8	Hall	3'2" x 8'8"	27 sq. ft	Yes
9	Kitchen	11'2" x 11'9"	132 sq. ft	Yes
10	Bedroom	10'1" x 15'4"	138 sq. ft	Yes
11	Foyer	12'6" x 4'0"	50 sq. ft	Yes
12	Hall	12'0" x 7'2"	53 sq. ft	Yes
13	Living Room	12'6" x 14'11"	186 sq. ft	Yes
14	Screened Porch	19'9" x 17'8"	318 sq. ft	No

Home data report

6595 Bray Rd, Tuscola, MI, US

#		Dimensions	sqft	Counted as living area
15	Family Room	17'0" x 15'1"	268 sq. ft	Yes
16	Garage	18'11" x 20'7"	389 sq. ft	No

1 Floor 1 - Utility



Dimensions: 8'0" x 10'4"
Area: 82 sq. ft
Counted as living area: No

Heated: Yes
Finished: No
Enclosed: Yes
Contiguous: Yes
Permitted: Yes
Wet space: No
Addition: No
Conversion: No

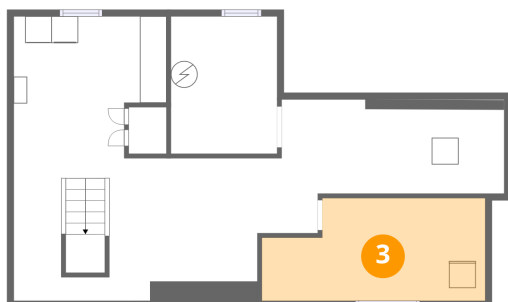
2 Floor 1 - Basement



Dimensions: 36'10" x 21'4"
Area: 441 sq. ft
Counted as living area: Yes

Heated: Yes
Finished: Yes
Enclosed: Yes
Contiguous: Yes
Permitted: Yes
Wet space: No
Addition: No
Conversion: No

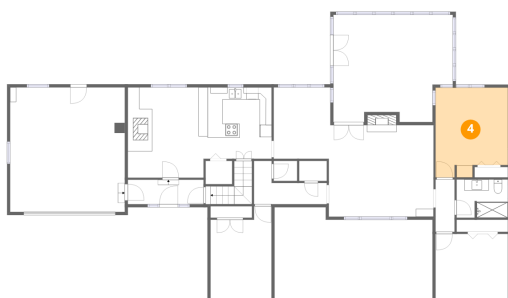
3 Floor 1 - Room



Dimensions: 16'9" x 7'8"
Area: 116 sq. ft
Counted as living area: Yes

Heated: Yes
Finished: Yes
Enclosed: Yes
Contiguous: Yes
Permitted: Yes
Wet space: No
Addition: No
Conversion: No

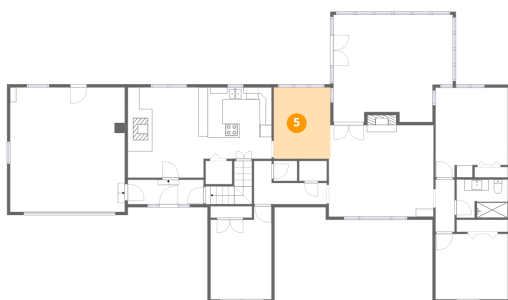
4 Floor 2 - Primary Bedroom



Dimensions: 11'11" x 14'10"
Area: 164 sq. ft
Counted as living area: Yes

Heated: Yes
Finished: Yes
Enclosed: Yes
Contiguous: Yes
Permitted: Yes
Wet space: No
Addition: No
Conversion: No

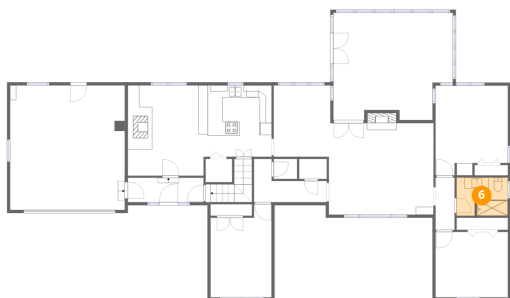
5 Floor 2 - Dining Area



Dimensions: 9'4" x 11'9"
Area: 110 sq. ft
Counted as living area: Yes

Heated: Yes
Finished: Yes
Enclosed: Yes
Contiguous: Yes
Permitted: Yes
Wet space: No
Addition: No
Conversion: No

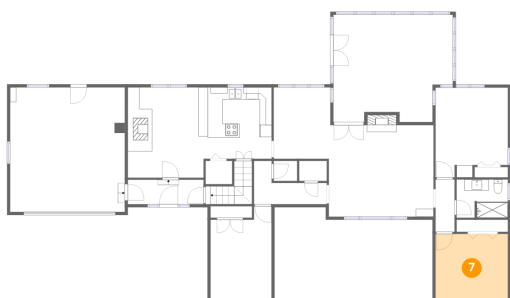
6 Floor 2 - Bath



Dimensions: 8'6" x 6'4"
Area: 52 sq. ft
Counted as living area: Yes

Heated: Yes
Finished: Yes
Enclosed: Yes
Contiguous: Yes
Permitted: Yes
Wet space: Yes
Addition: No
Conversion: No

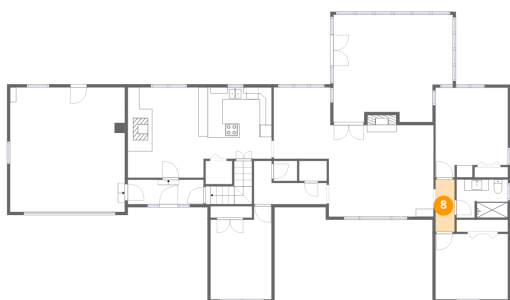
7 Floor 2 - Bedroom



Dimensions: 11'11" x 10'9"
Area: 129 sq. ft
Counted as living area: Yes

Heated: Yes
Finished: Yes
Enclosed: Yes
Contiguous: Yes
Permitted: Yes
Wet space: No
Addition: No
Conversion: No

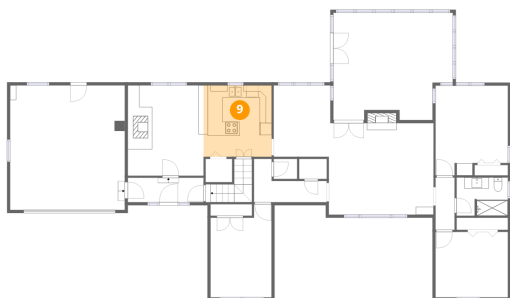
8 Floor 2 - Hall



Dimensions: 3'2" x 8'8"
Area: 27 sq. ft
Counted as living area: Yes

Heated: Yes
Finished: Yes
Enclosed: Yes
Contiguous: Yes
Permitted: Yes
Wet space: No
Addition: No
Conversion: No

9 Floor 2 - Kitchen



Dimensions: 11'2" x 11'9"
Area: 132 sq. ft
Counted as living area: Yes

Heated: Yes
Finished: Yes
Enclosed: Yes
Contiguous: Yes
Permitted: Yes
Wet space: No
Addition: No
Conversion: No

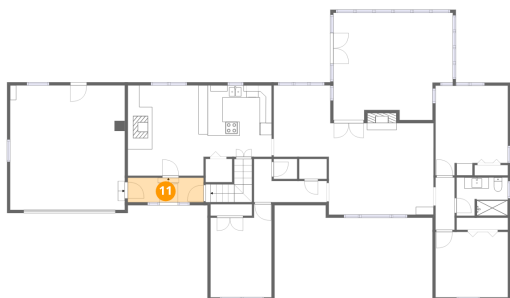
10 Floor 2 - Bedroom



Dimensions: 10'1" x 15'4"
Area: 138 sq. ft
Counted as living area: Yes

Heated: Yes
Finished: Yes
Enclosed: Yes
Contiguous: Yes
Permitted: Yes
Wet space: No
Addition: No
Conversion: No

11 Floor 2 - Foyer



Dimensions: 12'6" x 4'0"
Area: 50 sq. ft
Counted as living area: Yes

Heated: Yes
Finished: Yes
Enclosed: Yes
Contiguous: Yes
Permitted: Yes
Wet space: No
Addition: No
Conversion: No

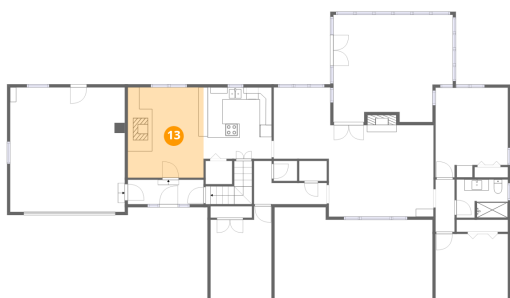
12 Floor 2 - Hall



Dimensions: 12'0" x 7'2"
Area: 53 sq. ft
Counted as living area: Yes

Heated: Yes
Finished: Yes
Enclosed: Yes
Contiguous: Yes
Permitted: Yes
Wet space: No
Addition: No
Conversion: No

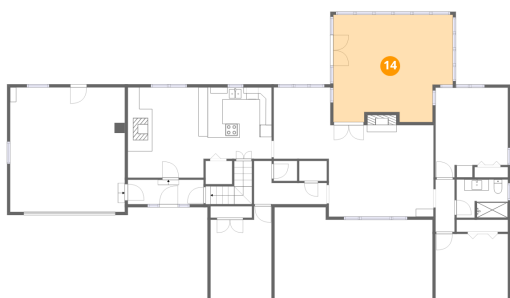
13 Floor 2 - Living Room



Dimensions: 12'6" x 14'11"
Area: 186 sq. ft
Counted as living area: Yes

Heated: Yes
Finished: Yes
Enclosed: Yes
Contiguous: Yes
Permitted: Yes
Wet space: No
Addition: No
Conversion: No

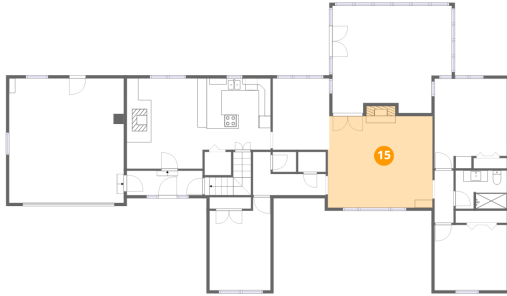
14 Floor 2 - Screened Porch



Dimensions: 19'9" x 17'8"
Area: 318 sq. ft
Counted as living area: No

Heated: No
Finished: No
Enclosed: No
Contiguous: Yes
Permitted: Yes
Wet space: No
Addition: No
Conversion: No

15 Floor 2 - Family Room



Dimensions: 17'0" x 15'1"
Area: 268 sq. ft
Counted as living area: Yes

Heated: Yes
Finished: Yes
Enclosed: Yes
Contiguous: Yes
Permitted: Yes
Wet space: No
Addition: No
Conversion: No

16 Floor 2 - Garage



Dimensions: 18'11" x 20'7"
Area: 389 sq. ft
Counted as living area: No

Heated: No
Finished: No
Enclosed: Yes
Contiguous: Yes
Permitted: Yes
Wet space: No
Addition: No
Conversion: No