

Home data report

1894 Oakcrest Cir, Castle Rock, CO, US



Total Area: 1659 sq. ft

Basement: 516 sq. ft, 1st Floor: 563 sq. ft, 2nd Floor: 580 sq. ft

Excluded: Utility 47 sq. ft, Patio 82 sq. ft, Porch 97 sq. ft, Balcony 78 sq. ft, Walls: 103 sq. ft

Property summary

 **3** Floors

 **3** Bedrooms

 **2** Bathrooms

 **1** Half baths

Home data report

1894 Oakcrest Cir, Castle Rock, CO, US



Room dimensions

Floor 1 Below grade

Total: 516 sqft

Excluded: 129 sqft

#		Dimensions	sqft	Counted as living area
1	Family Room	13'4" x 14'11"	194 sq. ft	Yes
2	Bath	6'8" x 8'1"	50 sq. ft	Yes
3	Utility	6'8" x 7'6"	47 sq. ft	No
4	Bedroom	13'4" x 12'0"	147 sq. ft	Yes
5	Hall	6'4" x 14'8"	88 sq. ft	Yes
6	Patio	14'4" x 5'9"	82 sq. ft	No

Home data report

1894 Oakcrest Cir, Castle Rock, CO, US



Room dimensions

Floor 2

Total: 563sqft

Excluded: 175sqft

#		Dimensions	sqft	Counted as living area
7	Laundry	6'0" x 3'4"	20 sq. ft	Yes
8	Porch	11'10" x 8'5"	97 sq. ft	No
9	Kitchen	13'4" x 14'10"	198 sq. ft	Yes
10	Living Room	13'4" x 17'3"	230 sq. ft	Yes
11	Balcony	13'8" x 5'8"	78 sq. ft	No
12	Hall	3'6" x 10'1"	67 sq. ft	Yes
13	Bath	6'0" x 5'9"	35 sq. ft	Yes

Home data report

1894 Oakcrest Cir, Castle Rock, CO, US



Room dimensions

Floor 3

Total: 580 sqft Excluded: 0 sqft

#		Dimensions	sqft	Counted as living area
14	Bath	6'0" x 10'5"	58 sq. ft	Yes
15	Hall	6'11" x 8'8"	73 sq. ft	Yes
16	Bedroom	13'4" x 11'6"	153 sq. ft	Yes
17	W.I.C.	6'6" x 5'8"	33 sq. ft	Yes
18	Primary Bedroom	13'4" x 22'8"	223 sq. ft	Yes

1 Floor 1 - Family Room



Dimensions: 13'4" x 14'11"
Area: 194 sq. ft
Counted as living area: Yes

Heated: Yes
Finished: Yes
Enclosed: Yes
Contiguous: Yes
Permitted: Yes
Wet space: No
Addition: No
Conversion: No

2 Floor 1 - Bath



Dimensions: 6'8" x 8'1"
Area: 50 sq. ft
Counted as living area: Yes

Heated: Yes
Finished: Yes
Enclosed: Yes
Contiguous: Yes
Permitted: Yes
Wet space: Yes
Addition: No
Conversion: No

3 Floor 1 - Utility



Dimensions: 6'8" x 7'6"
Area: 47 sq. ft
Counted as living area: No

Heated: Yes
Finished: No
Enclosed: Yes
Contiguous: Yes
Permitted: Yes
Wet space: No
Addition: No
Conversion: No

4 Floor 1 - Bedroom



Dimensions: 13'4" x 12'0"
Area: 147 sq. ft
Counted as living area: Yes

Heated: Yes
Finished: Yes
Enclosed: Yes
Contiguous: Yes
Permitted: Yes
Wet space: No
Addition: No
Conversion: No

5 Floor 1 - Hall



Dimensions: 6'4" x 14'8"
Area: 88 sq. ft
Counted as living area: Yes

Heated: Yes
Finished: Yes
Enclosed: Yes
Contiguous: Yes
Permitted: Yes
Wet space: No
Addition: No
Conversion: No

6 Floor 1 - Patio



Dimensions: 14'4" x 5'9"
Area: 82 sq. ft
Counted as living area: No

Heated: No
Finished: No
Enclosed: No
Contiguous: Yes
Permitted: Yes
Wet space: No
Addition: No
Conversion: No

7 Floor 2 - Laundry



Dimensions: 6'0" x 3'4"
Area: 20 sq. ft
Counted as living area: Yes

Heated: Yes
Finished: Yes
Enclosed: Yes
Contiguous: Yes
Permitted: Yes
Wet space: No
Addition: No
Conversion: No

8 Floor 2 - Porch



Dimensions: 11'10" x 8'5"
Area: 97 sq. ft
Counted as living area: No

Heated: No
Finished: No
Enclosed: No
Contiguous: Yes
Permitted: Yes
Wet space: No
Addition: No
Conversion: No

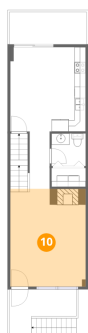
9 Floor 2 - Kitchen



Dimensions: 13'4" x 14'10"
Area: 198 sq. ft
Counted as living area: Yes

Heated: Yes
Finished: Yes
Enclosed: Yes
Contiguous: Yes
Permitted: Yes
Wet space: No
Addition: No
Conversion: No

10 Floor 2 - Living Room



Dimensions: 13'4" x 17'3"
Area: 230 sq. ft
Counted as living area: Yes

Heated: Yes
Finished: Yes
Enclosed: Yes
Contiguous: Yes
Permitted: Yes
Wet space: No
Addition: No
Conversion: No

11 Floor 2 - Balcony



Dimensions: 13'8" x 5'8"
Area: 78 sq. ft
Counted as living area: No

Heated: No
Finished: No
Enclosed: No
Contiguous: Yes
Permitted: Yes
Wet space: No
Addition: No
Conversion: No

12 Floor 2 - Hall



Dimensions: 3'6" x 10'1"
Area: 67 sq. ft
Counted as living area: Yes

Heated: Yes
Finished: Yes
Enclosed: Yes
Contiguous: Yes
Permitted: Yes
Wet space: No
Addition: No
Conversion: No

13 Floor 2 - Bath



Dimensions: 6'0" x 5'9"
Area: 35 sq. ft
Counted as living area: Yes

Heated: Yes
Finished: Yes
Enclosed: Yes
Contiguous: Yes
Permitted: Yes
Wet space: Yes
Addition: No
Conversion: No

14 Floor 3 - Bath



Dimensions: 6'0" x 10'5"
Area: 58 sq. ft
Counted as living area: Yes

Heated: Yes
Finished: Yes
Enclosed: Yes
Contiguous: Yes
Permitted: Yes
Wet space: Yes
Addition: No
Conversion: No

15 Floor 3 - Hall



Dimensions: 6'11" x 8'8"
Area: 73 sq. ft
Counted as living area: Yes

Heated: Yes
Finished: Yes
Enclosed: Yes
Contiguous: Yes
Permitted: Yes
Wet space: No
Addition: No
Conversion: No

16 Floor 3 - Bedroom



Dimensions: 13'4" x 11'6"
Area: 153 sq. ft
Counted as living area: Yes

Heated: Yes
Finished: Yes
Enclosed: Yes
Contiguous: Yes
Permitted: Yes
Wet space: No
Addition: No
Conversion: No

17 Floor 3 - W.I.C.



Dimensions: 6'6" x 5'8"
Area: 33 sq. ft
Counted as living area: Yes

Heated: Yes
Finished: Yes
Enclosed: Yes
Contiguous: Yes
Permitted: Yes
Wet space: No
Addition: No
Conversion: No

18 Floor 3 - Primary Bedroom



Dimensions: 13'4" x 22'8"
Area: 223 sq. ft
Counted as living area: Yes

Heated: Yes
Finished: Yes
Enclosed: Yes
Contiguous: Yes
Permitted: Yes
Wet space: No
Addition: No
Conversion: No