



Total Area: 5977 sq. ft

1st Floor: 2663 sq. ft, 2nd Floor: 3314 sq. ft

Excluded: Electrical room 459 sq. ft, Garage 1025 sq. ft, Porch 26 sq. ft, Deck 483 sq. ft, Walls: 308 sq. ft

Property summary

 **2** Floors

 **6** Bedrooms

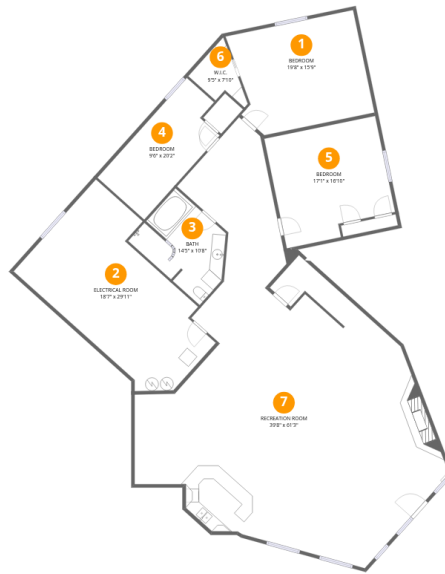
 **3** Bathrooms

Home data report

6239 Ashcroft Rd, Greeley, CO, US

 **1**
Half baths

 **1**
Garages



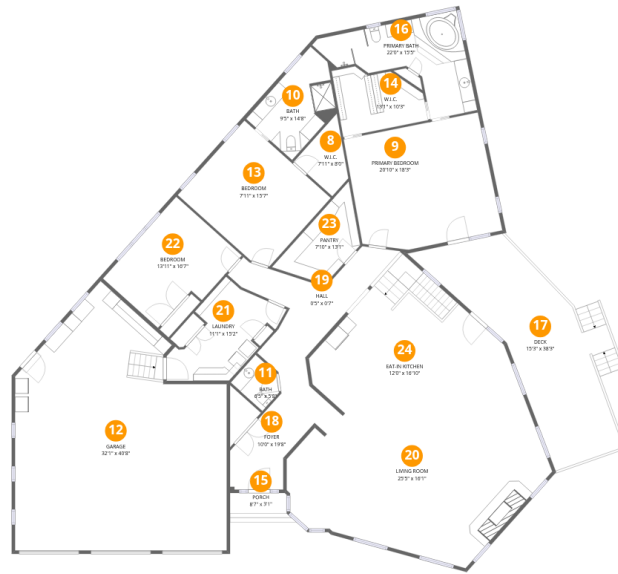
Room dimensions

Floor 1

Total: 2663 sqft

Excluded: 459 sqft

#		Dimensions	sqft	Counted as living area
1	Bedroom	19'8" x 15'9"	310 sq. ft	Yes
2	Electrical Room	18'7" x 29'11"	556 sq. ft	No
3	Bath	14'5" x 10'8"	154 sq. ft	Yes
4	Bedroom	9'6" x 20'2"	191 sq. ft	Yes
5	Bedroom	17'1" x 16'10"	287 sq. ft	Yes
6	W.I.C.	9'5" x 7'10"	74 sq. ft	Yes
7	Recreation Room	39'8" x 61'3"	2430 sq. ft	Yes



Room dimensions

Floor 2

Total:3314sqft

Excluded: 1534sqft

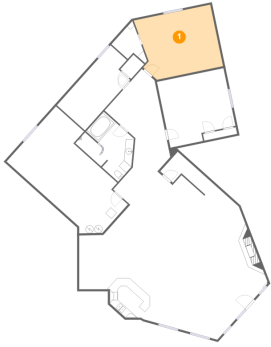
#		Dimensions	sqft	Counted as living area
8	W.I.C.	7'11" x 8'0"	63 sq. ft	Yes
9	Primary Bedroom	20'10" x 18'3"	379 sq. ft	Yes
10	Bath	9'5" x 14'8"	138 sq. ft	Yes
11	Bath	6'5" x 5'8"	36 sq. ft	Yes
12	Garage	32'1" x 40'8"	1304 sq. ft	No
13	Bedroom	7'11" x 15'7"	124 sq. ft	Yes
14	W.I.C.	13'1" x 10'3"	134 sq. ft	Yes
15	Porch	8'7" x 3'1"	26 sq. ft	No
16	Primary Bath	22'0" x 15'5"	340 sq. ft	Yes
17	Deck	15'3" x 38'3"	582 sq. ft	No
18	Foyer	10'0" x 19'8"	196 sq. ft	Yes

Home data report

6239 Ashcroft Rd,Greeley,CO,US

#		Dimensions	sqft	Counted as living area
19	Hall	0'5" x 0'7"	0 sq. ft	Yes
20	Living Room	25'5" x 16'1"	410 sq. ft	Yes
21	Laundry	11'1" x 15'2"	168 sq. ft	Yes
22	Bedroom	13'11" x 16'7"	231 sq. ft	Yes
23	Pantry	7'10" x 13'1"	102 sq. ft	Yes
24	Eat-in Kitchen	12'0" x 16'10"	202 sq. ft	Yes

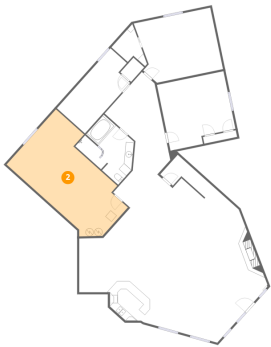
1 Floor 1 - Bedroom



Dimensions: 19'8" x 15'9"
Area: 310 sq. ft
Counted as living area: Yes

Heated: Yes
Finished: Yes
Enclosed: Yes
Contiguous: Yes
Permitted: Yes
Wet space: No
Addition: No
Conversion: No

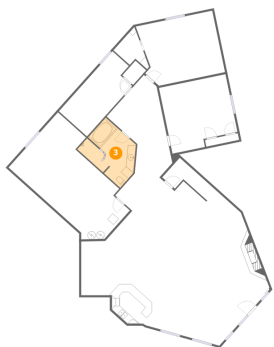
2 Floor 1 - Electrical Room



Dimensions: 18'7" x 29'11"
Area: 556 sq. ft
Counted as living area: No

Heated: No
Finished: No
Enclosed: Yes
Contiguous: Yes
Permitted: Yes
Wet space: No
Addition: No
Conversion: No

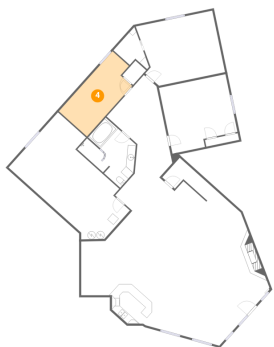
3 Floor 1 - Bath



Dimensions: 14'5" x 10'8"
Area: 154 sq. ft
Counted as living area: Yes

Heated: Yes
Finished: Yes
Enclosed: Yes
Contiguous: Yes
Permitted: Yes
Wet space: Yes
Addition: No
Conversion: No

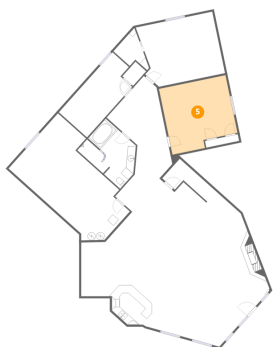
4 Floor 1 - Bedroom



Dimensions: 9'6" x 20'2"
Area: 191 sq. ft
Counted as living area: Yes

Heated: Yes
Finished: Yes
Enclosed: Yes
Contiguous: Yes
Permitted: Yes
Wet space: No
Addition: No
Conversion: No

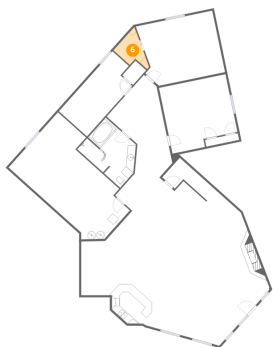
5 Floor 1 - Bedroom



Dimensions: 17'1" x 16'10"
Area: 287 sq. ft
Counted as living area: Yes

Heated: Yes
Finished: Yes
Enclosed: Yes
Contiguous: Yes
Permitted: Yes
Wet space: No
Addition: No
Conversion: No

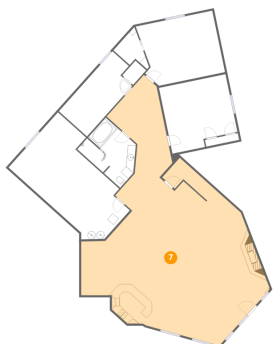
6 Floor 1 - W.I.C.



Dimensions: 9'5" x 7'10"
Area: 74 sq. ft
Counted as living area: Yes

Heated: Yes
Finished: Yes
Enclosed: Yes
Contiguous: Yes
Permitted: Yes
Wet space: No
Addition: No
Conversion: No

7 Floor 1 - Recreation Room



Dimensions: 39'8" x 61'3"
Area: 2430 sq. ft
Counted as living area: Yes

Heated: Yes
Finished: Yes
Enclosed: Yes
Contiguous: Yes
Permitted: Yes
Wet space: No
Addition: No
Conversion: No

8 Floor 2 - W.I.C.



Dimensions: 7'11" x 8'0"
Area: 63 sq. ft
Counted as living area: Yes

Heated: Yes
Finished: Yes
Enclosed: Yes
Contiguous: Yes
Permitted: Yes
Wet space: No
Addition: No
Conversion: No

9 Floor 2 - Primary Bedroom



Dimensions: 20'10" x 18'3"
Area: 379 sq. ft
Counted as living area: Yes

Heated: Yes
Finished: Yes
Enclosed: Yes
Contiguous: Yes
Permitted: Yes
Wet space: No
Addition: No
Conversion: No

10 Floor 2 - Bath



Dimensions: 9'5" x 14'8"
Area: 138 sq. ft
Counted as living area: Yes

Heated: Yes
Finished: Yes
Enclosed: Yes
Contiguous: Yes
Permitted: Yes
Wet space: Yes
Addition: No
Conversion: No

11 Floor 2 - Bath



Dimensions: 6'5" x 5'8"
Area: 36 sq. ft
Counted as living area: Yes

Heated: Yes
Finished: Yes
Enclosed: Yes
Contiguous: Yes
Permitted: Yes
Wet space: Yes
Addition: No
Conversion: No

12 Floor 2 - Garage



Dimensions: 32'1" x 40'8"
Area: 1304 sq. ft
Counted as living area: No

Heated: No
Finished: No
Enclosed: Yes
Contiguous: Yes
Permitted: Yes
Wet space: No
Addition: No
Conversion: No

13 Floor 2 - Bedroom



Dimensions: 7'11" x 15'7"
Area: 124 sq. ft
Counted as living area: Yes

Heated: Yes
Finished: Yes
Enclosed: Yes
Contiguous: Yes
Permitted: Yes
Wet space: No
Addition: No
Conversion: No

14 Floor 2 - W.I.C.



Dimensions: 13'1" x 10'3"
Area: 134 sq. ft
Counted as living area: Yes

Heated: Yes
Finished: Yes
Enclosed: Yes
Contiguous: Yes
Permitted: Yes
Wet space: No
Addition: No
Conversion: No

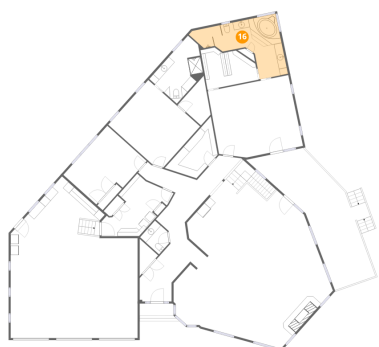
15 Floor 2 - Porch



Dimensions: 8'7" x 3'1"
Area: 26 sq. ft
Counted as living area: No

Heated: No
Finished: No
Enclosed: No
Contiguous: Yes
Permitted: Yes
Wet space: No
Addition: No
Conversion: No

16 Floor 2 - Primary Bath



Dimensions: 22'0" x 15'5"
Area: 340 sq. ft
Counted as living area: Yes

Heated: Yes
Finished: Yes
Enclosed: Yes
Contiguous: Yes
Permitted: Yes
Wet space: Yes
Addition: No
Conversion: No

17 Floor 2 - Deck



Dimensions: 15'3" x 38'3"
Area: 582 sq. ft
Counted as living area: No

Heated: No
Finished: No
Enclosed: No
Contiguous: Yes
Permitted: Yes
Wet space: No
Addition: No
Conversion: No

18 Floor 2 - Foyer



Dimensions: 10'0" x 19'8"
Area: 196 sq. ft
Counted as living area: Yes

Heated: Yes
Finished: Yes
Enclosed: Yes
Contiguous: Yes
Permitted: Yes
Wet space: No
Addition: No
Conversion: No

19 Floor 2 - Hall



Dimensions: 0'5" x 0'7"
Area: 0 sq. ft
Counted as living area: Yes

Heated: Yes
Finished: Yes
Enclosed: Yes
Contiguous: Yes
Permitted: Yes
Wet space: No
Addition: No
Conversion: No

20 Floor 2 - Living Room



Dimensions: 25'5" x 16'1"
Area: 410 sq. ft
Counted as living area: Yes

Heated: Yes
Finished: Yes
Enclosed: Yes
Contiguous: Yes
Permitted: Yes
Wet space: No
Addition: No
Conversion: No

21 Floor 2 - Laundry



Dimensions: 11'1" x 15'2"
Area: 168 sq. ft
Counted as living area: Yes

Heated: Yes
Finished: Yes
Enclosed: Yes
Contiguous: Yes
Permitted: Yes
Wet space: No
Addition: No
Conversion: No

22 Floor 2 - Bedroom



Dimensions: 13'11" x 16'7"
Area: 231 sq. ft
Counted as living area: Yes

Heated: Yes
Finished: Yes
Enclosed: Yes
Contiguous: Yes
Permitted: Yes
Wet space: No
Addition: No
Conversion: No

23 Floor 2 - Pantry



Dimensions: 7'10" x 13'1"
Area: 102 sq. ft
Counted as living area: Yes

Heated: Yes
Finished: Yes
Enclosed: Yes
Contiguous: Yes
Permitted: Yes
Wet space: No
Addition: No
Conversion: No

24 Floor 2 - Eat-in Kitchen



Dimensions: 12'0" x 16'10"
Area: 202 sq. ft
Counted as living area: Yes

Heated: Yes
Finished: Yes
Enclosed: Yes
Contiguous: Yes
Permitted: Yes
Wet space: No
Addition: No
Conversion: No