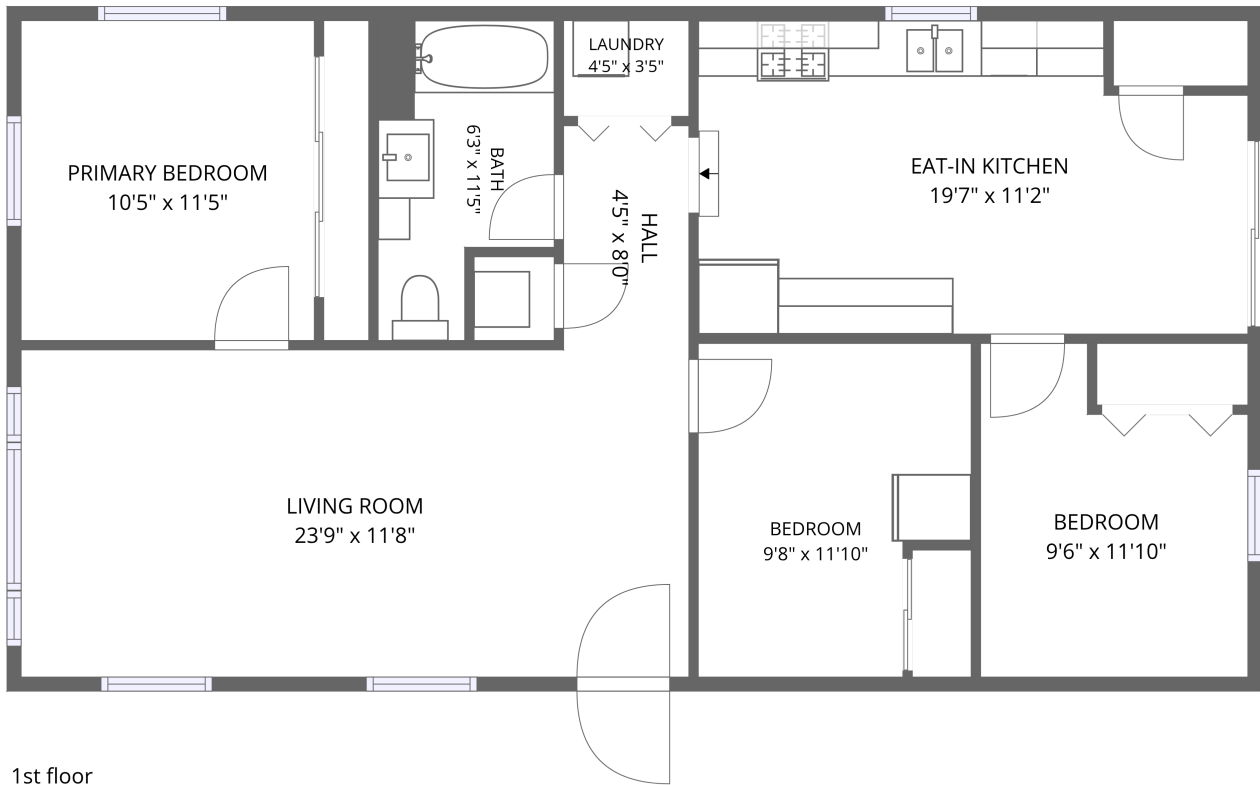


Home data report

52114 Grape Rd, Granger, IN, US



1st floor


Total Area: 1019 sq. ft

1st Floor: 1019 sq. ft

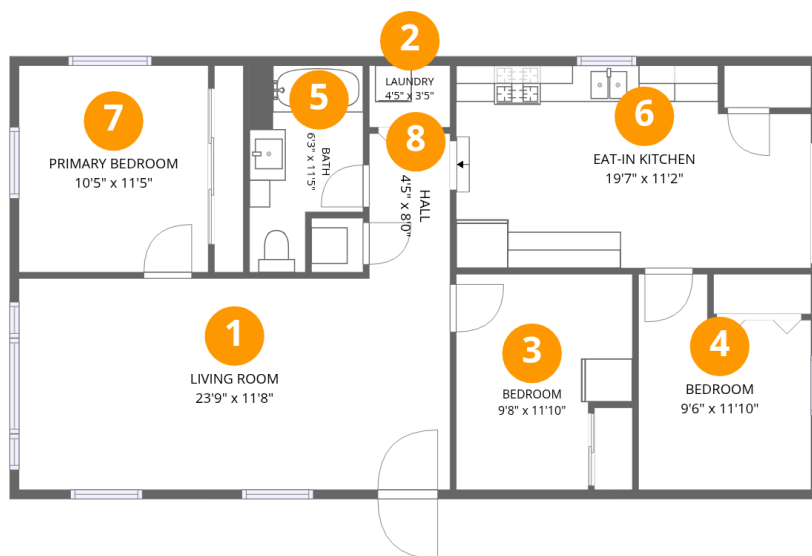
Excluded: Walls: 68 sq. ft

Property summary

 **1** Floors

 **3** Bedrooms

 **1** Bathrooms



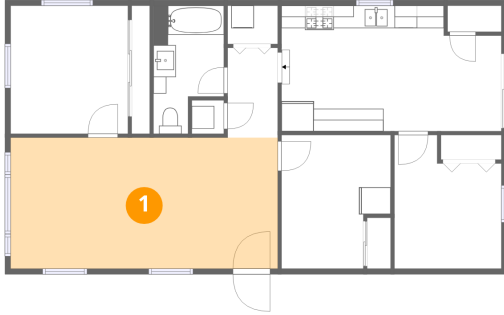
Room dimensions

Floor 1

Total: 1019 sqft Excluded: 0 sqft

#		Dimensions	sqft	Counted as living area
1	Living Room	23'9" x 11'8"	276 sq. ft	Yes
2	Laundry	4'5" x 3'5"	15 sq. ft	Yes
3	Bedroom	9'8" x 11'10"	103 sq. ft	Yes
4	Bedroom	9'6" x 11'10"	98 sq. ft	Yes
5	Bath	6'3" x 11'5"	61 sq. ft	Yes
6	Eat-in Kitchen	19'7" x 11'2"	204 sq. ft	Yes
7	Primary Bedroom	10'5" x 11'5"	119 sq. ft	Yes
8	Hall	4'5" x 8'0"	36 sq. ft	Yes

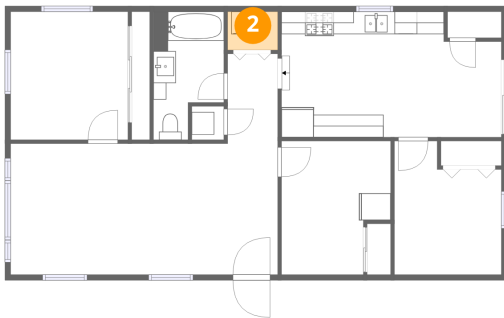
1 Floor 1 - Living Room



Dimensions: 23'9" x 11'8"
Area: 276 sq. ft
Counted as living area: Yes

Heated: Yes
Finished: Yes
Enclosed: Yes
Contiguous: Yes
Permitted: Yes
Wet space: No
Addition: No
Conversion: No

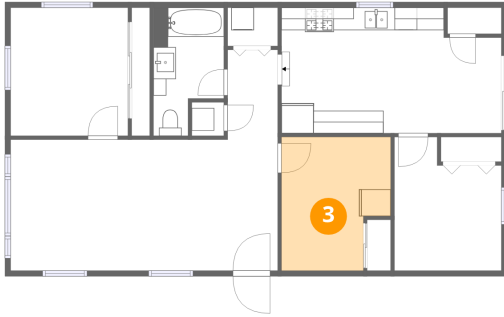
2 Floor 1 - Laundry



Dimensions: 4'5" x 3'5"
Area: 15 sq. ft
Counted as living area: Yes

Heated: Yes
Finished: Yes
Enclosed: Yes
Contiguous: Yes
Permitted: Yes
Wet space: No
Addition: No
Conversion: No

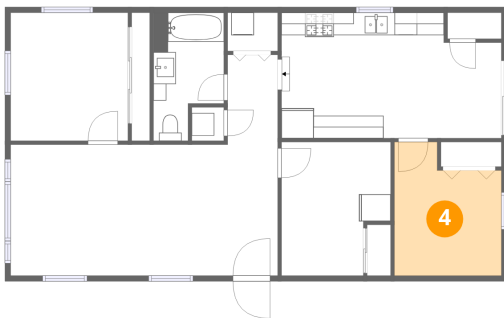
3 Floor 1 - Bedroom



Dimensions: 9'8" x 11'10"
Area: 103 sq. ft
Counted as living area: Yes

Heated: Yes
Finished: Yes
Enclosed: Yes
Contiguous: Yes
Permitted: Yes
Wet space: No
Addition: No
Conversion: No

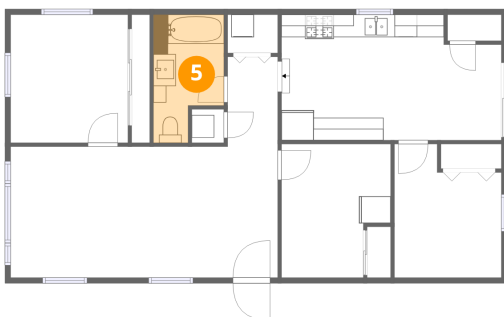
4 Floor 1 - Bedroom



Dimensions: 9'6" x 11'10"
Area: 98 sq. ft
Counted as living area: Yes

Heated: Yes
Finished: Yes
Enclosed: Yes
Contiguous: Yes
Permitted: Yes
Wet space: No
Addition: No
Conversion: No

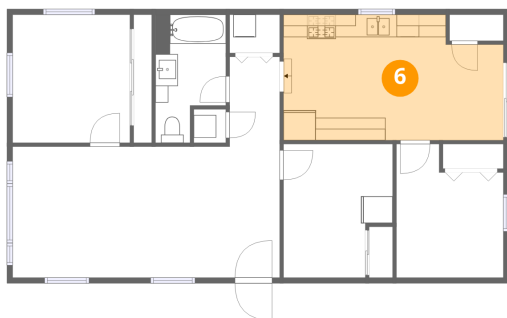
5 Floor 1 - Bath



Dimensions: 6'3" x 11'5"
Area: 61 sq. ft
Counted as living area: Yes

Heated: Yes
Finished: Yes
Enclosed: Yes
Contiguous: Yes
Permitted: Yes
Wet space: Yes
Addition: No
Conversion: No

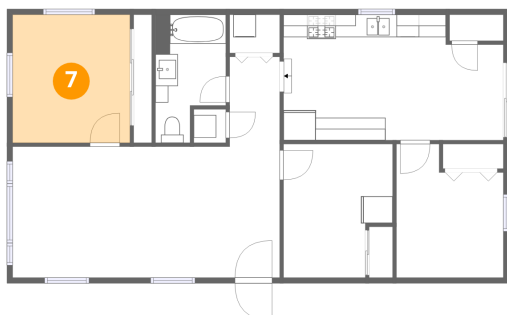
6 Floor 1 - Eat-in Kitchen



Dimensions: 19'7" x 11'2"
Area: 204 sq. ft
Counted as living area: Yes

Heated: Yes
Finished: Yes
Enclosed: Yes
Contiguous: Yes
Permitted: Yes
Wet space: No
Addition: No
Conversion: No

7 Floor 1 - Primary Bedroom



Dimensions: 10'5" x 11'5"
Area: 119 sq. ft
Counted as living area: Yes

Heated: Yes
Finished: Yes
Enclosed: Yes
Contiguous: Yes
Permitted: Yes
Wet space: No
Addition: No
Conversion: No

8 Floor 1 - Hall



Dimensions: 4'5" x 8'0"
Area: 36 sq. ft
Counted as living area: Yes

Heated: Yes
Finished: Yes
Enclosed: Yes
Contiguous: Yes
Permitted: Yes
Wet space: No
Addition: No
Conversion: No