

Home data report

6409 Brentwood Street, Scenic Heights, Arvada, Jefferson County, Colorado, United States, 80004




Total Area: 2138 sq. ft

1st Floor: 958 sq. ft, 2nd Floor: 1180 sq. ft

Excluded: Garage 617 sq. ft, Utility 30 sq. ft, Patio 54 sq. ft, Screened porch 22 sq. ft, Porch 79 sq. ft, Walls: 203 sq. ft

Property summary

 **2** Floors

 **3** Bedrooms

 **2** Bathrooms

 **1** Garages

Home data report

6409 Brentwood Street, Scenic Heights, Arvada, Jefferson County, Colorado, United States, 80004



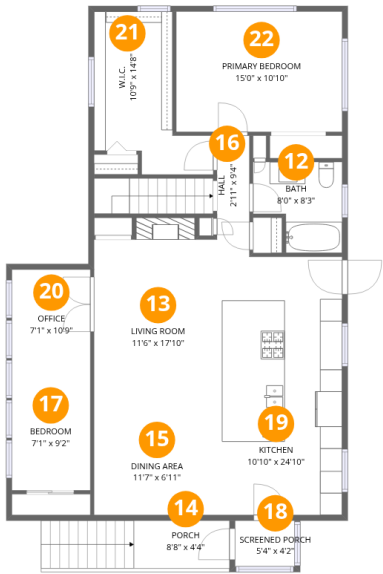
Room dimensions

Floor 1 Total:958sqft Excluded: 701sqft

#		Dimensions	sqft	Counted as living area
1	Hall	3'8" x 9'7"	31 sq. ft	Yes
2	Patio	7'5" x 7'3"	54 sq. ft	No
3	Bar	4'8" x 12'6"	59 sq. ft	Yes
4	Garage	24'7" x 25'1"	617 sq. ft	No
5	Bedroom	10'9" x 14'8"	139 sq. ft	Yes
6	Recreation Room	17'1" x 26'10"	425 sq. ft	Yes
7	Utility	6'8" x 6'1"	30 sq. ft	No
8	Office	10'8" x 10'10"	107 sq. ft	Yes
9	Entry	3'3" x 3'2"	42 sq. ft	Yes
10	Laundry	4'7" x 7'3"	33 sq. ft	Yes
11	Bath	7'2" x 11'10"	69 sq. ft	Yes

Home data report

6409 Brentwood Street, Scenic Heights, Arvada, Jefferson County, Colorado, United States, 80004



Room dimensions

Floor 2 Total:1180sqft Excluded: 101sqft

#		Dimensions	sqft	Counted as living area
12	Bath	8'0" x 8'3"	56 sq. ft	Yes
13	Living Room	11'6" x 17'10"	218 sq. ft	Yes
14	Porch	8'8" x 4'4"	79 sq. ft	No
15	Dining Area	11'7" x 6'11"	80 sq. ft	Yes
16	Hall	2'11" x 9'4"	27 sq. ft	Yes
17	Bedroom	7'1" x 9'2"	65 sq. ft	Yes
18	Screened Porch	5'4" x 4'2"	22 sq. ft	No
19	Kitchen	10'10" x 24'10"	256 sq. ft	Yes
20	Office	7'1" x 10'9"	76 sq. ft	Yes
21	W.I.C.	10'9" x 14'8"	108 sq. ft	Yes
22	Primary Bedroom	15'0" x 10'10"	162 sq. ft	Yes

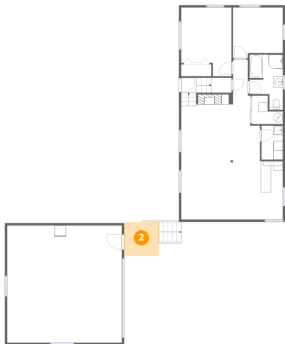
1 Floor 1 - Hall



Dimensions: 3'8" x 9'7"  
Area: 31 sq. ft  
Counted as living area: Yes

Heated: Yes  
Finished: Yes  
Enclosed: Yes  
Contiguous: Yes  
Permitted: Yes  
Wet space: No  
Addition: No  
Conversion: No

2 Floor 1 - Patio



Dimensions: 7'5" x 7'3"  
Area: 54 sq. ft  
Counted as living area: No

Heated: No  
Finished: No  
Enclosed: No  
Contiguous: Yes  
Permitted: Yes  
Wet space: No  
Addition: No  
Conversion: No

3 Floor 1 - Bar



Dimensions: 4'8" x 12'6"  
Area: 59 sq. ft  
Counted as living area: Yes

Heated: Yes  
Finished: Yes  
Enclosed: Yes  
Contiguous: Yes  
Permitted: Yes  
Wet space: No  
Addition: No  
Conversion: No

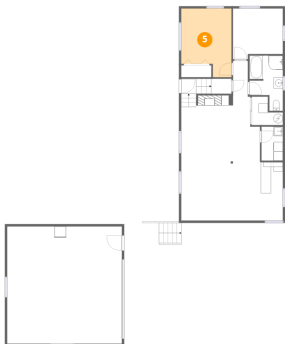
4 Floor 1 - Garage



Dimensions: 24'7" x 25'1"  
Area: 617 sq. ft  
Counted as living area: No

Heated: No  
Finished: No  
Enclosed: Yes  
Contiguous: Yes  
Permitted: Yes  
Wet space: No  
Addition: No  
Conversion: No

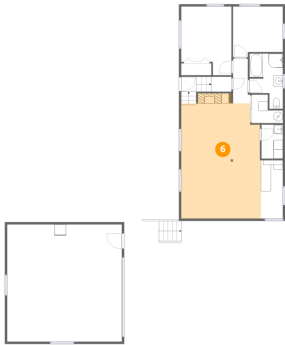
5 Floor 1 - Bedroom



Dimensions: 10'9" x 14'8"  
Area: 139 sq. ft  
Counted as living area: Yes

Heated: Yes  
Finished: Yes  
Enclosed: Yes  
Contiguous: Yes  
Permitted: Yes  
Wet space: No  
Addition: No  
Conversion: No

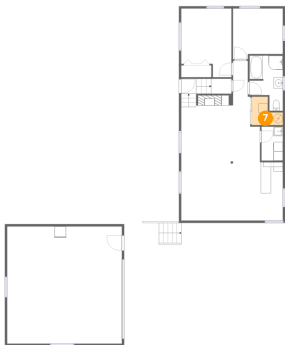
6 Floor 1 - Recreation Room



Dimensions: 17'1" x 26'10"  
Area: 425 sq. ft  
Counted as living area: Yes

Heated: Yes  
Finished: Yes  
Enclosed: Yes  
Contiguous: Yes  
Permitted: Yes  
Wet space: No  
Addition: No  
Conversion: No

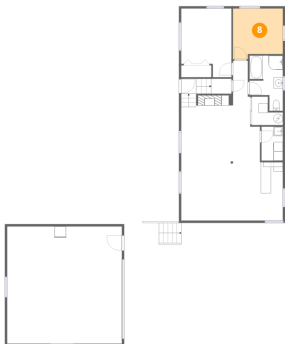
7 Floor 1 - Utility



Dimensions: 6'8" x 6'1"  
Area: 30 sq. ft  
Counted as living area: No

Heated: Yes  
Finished: No  
Enclosed: Yes  
Contiguous: Yes  
Permitted: Yes  
Wet space: No  
Addition: No  
Conversion: No

8 Floor 1 - Office



Dimensions: 10'8" x 10'10"  
Area: 107 sq. ft  
Counted as living area: Yes

Heated: Yes  
Finished: Yes  
Enclosed: Yes  
Contiguous: Yes  
Permitted: Yes  
Wet space: No  
Addition: No  
Conversion: No

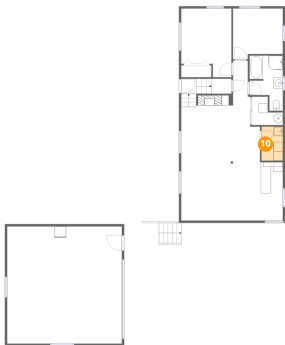
9 Floor 1 - Entry



Dimensions: 3'3" x 3'2"  
Area: 42 sq. ft  
Counted as living area: Yes

Heated: Yes  
Finished: Yes  
Enclosed: Yes  
Contiguous: Yes  
Permitted: Yes  
Wet space: No  
Addition: No  
Conversion: No

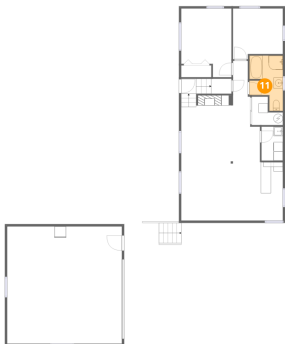
10 Floor 1 - Laundry



Dimensions: 4'7" x 7'3"  
Area: 33 sq. ft  
Counted as living area: Yes

Heated: Yes  
Finished: Yes  
Enclosed: Yes  
Contiguous: Yes  
Permitted: Yes  
Wet space: No  
Addition: No  
Conversion: No

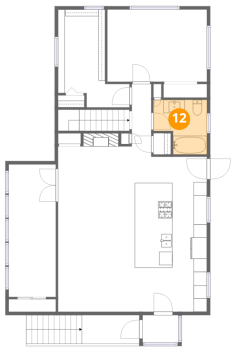
11 Floor 1 - Bath



Dimensions: 7'2" x 11'10"  
Area: 69 sq. ft  
Counted as living area: Yes

Heated: Yes  
Finished: Yes  
Enclosed: Yes  
Contiguous: Yes  
Permitted: Yes  
Wet space: Yes  
Addition: No  
Conversion: No

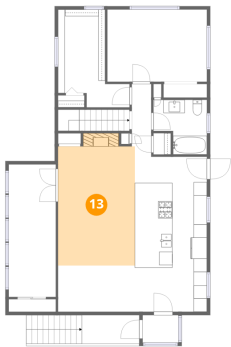
12 Floor 2 - Bath



Dimensions: 8'0" x 8'3"  
Area: 56 sq. ft  
Counted as living area: Yes

Heated: Yes  
Finished: Yes  
Enclosed: Yes  
Contiguous: Yes  
Permitted: Yes  
Wet space: Yes  
Addition: No  
Conversion: No

13 Floor 2 - Living Room



Dimensions: 11'6" x 17'10"  
Area: 218 sq. ft  
Counted as living area: Yes

Heated: Yes  
Finished: Yes  
Enclosed: Yes  
Contiguous: Yes  
Permitted: Yes  
Wet space: No  
Addition: No  
Conversion: No

14 Floor 2 - Porch



Dimensions: 8'8" x 4'4"  
Area: 79 sq. ft  
Counted as living area: No

Heated: No  
Finished: No  
Enclosed: No  
Contiguous: Yes  
Permitted: Yes  
Wet space: No  
Addition: No  
Conversion: No



6409 Brentwood Street, Scenic Heights, Arvada, Jefferson  
County, Colorado, United States, 80004

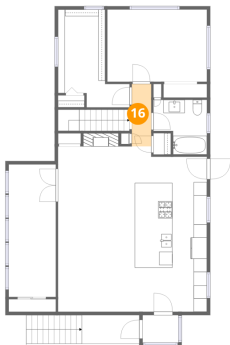
## 15 Floor 2 - Dining Area



Dimensions: 11'7" x 6'11"  
Area: 80 sq. ft  
Counted as living area: Yes

Heated: Yes  
Finished: Yes  
Enclosed: Yes  
Contiguous: Yes  
Permitted: Yes  
Wet space: No  
Addition: No  
Conversion: No

## 16 Floor 2 - Hall



Dimensions: 2'11" x 9'4"  
Area: 27 sq. ft  
Counted as living area: Yes

Heated: Yes  
Finished: Yes  
Enclosed: Yes  
Contiguous: Yes  
Permitted: Yes  
Wet space: No  
Addition: No  
Conversion: No

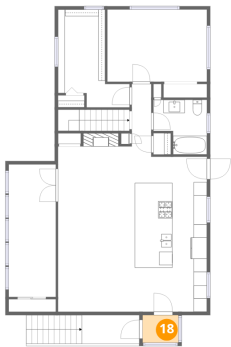
## 17 Floor 2 - Bedroom



Dimensions: 7'1" x 9'2"  
Area: 65 sq. ft  
Counted as living area: Yes

Heated: Yes  
Finished: Yes  
Enclosed: Yes  
Contiguous: Yes  
Permitted: Yes  
Wet space: No  
Addition: No  
Conversion: No

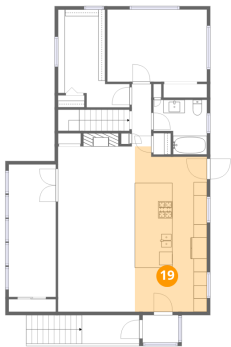
18 Floor 2 - Screened Porch



Dimensions: 5'4" x 4'2"  
Area: 22 sq. ft  
Counted as living area: No

Heated: No  
Finished: No  
Enclosed: No  
Contiguous: Yes  
Permitted: Yes  
Wet space: No  
Addition: No  
Conversion: No

19 Floor 2 - Kitchen



Dimensions: 10'10" x 24'10"  
Area: 256 sq. ft  
Counted as living area: Yes

Heated: Yes  
Finished: Yes  
Enclosed: Yes  
Contiguous: Yes  
Permitted: Yes  
Wet space: No  
Addition: No  
Conversion: No

20 Floor 2 - Office



Dimensions: 7'1" x 10'9"  
Area: 76 sq. ft  
Counted as living area: Yes

Heated: Yes  
Finished: Yes  
Enclosed: Yes  
Contiguous: Yes  
Permitted: Yes  
Wet space: No  
Addition: No  
Conversion: No

## Home data report

**6409 Brentwood Street, Scenic Heights, Arvada, Jefferson County, Colorado, United States, 80004**

### **21** Floor 2 - W.I.C.

---



Dimensions: 10'9" x 14'8"  
Area: 108 sq. ft  
Counted as living area: Yes

Heated: Yes  
Finished: Yes  
Enclosed: Yes  
Contiguous: Yes  
Permitted: Yes  
Wet space: No  
Addition: No  
Conversion: No

### **22** Floor 2 - Primary Bedroom

---



Dimensions: 15'0" x 10'10"  
Area: 162 sq. ft  
Counted as living area: Yes

Heated: Yes  
Finished: Yes  
Enclosed: Yes  
Contiguous: Yes  
Permitted: Yes  
Wet space: No  
Addition: No  
Conversion: No