

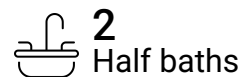


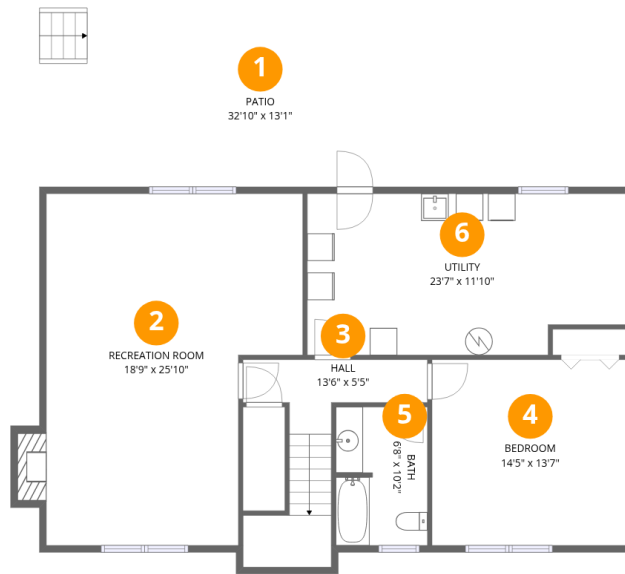
Total Area: 2287 sq. ft

Basement: 1116 sq. ft, 1st Floor: 1171 sq. ft

Excluded: Patio 403 sq. ft, Fireplace 13 sq. ft, Deck 349 sq. ft, Porch 211 sq. ft, Carport 397 sq. ft, Walls: 139 sq. ft

Property summary





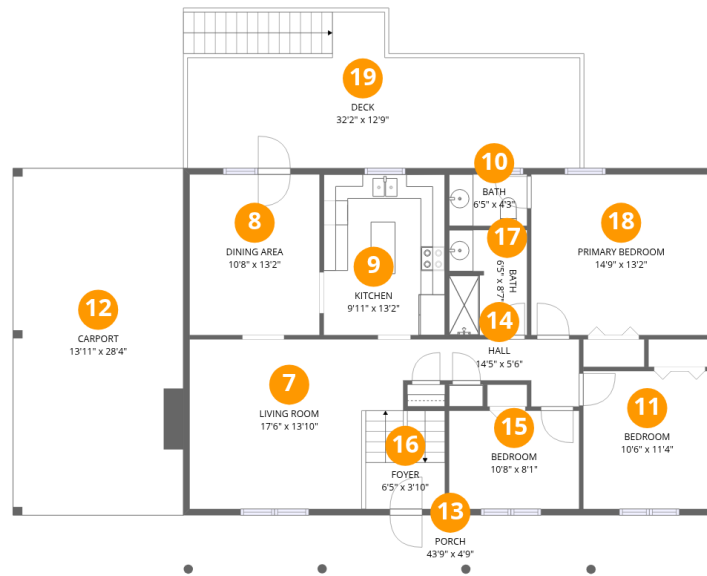
Room dimensions

Floor 1 Below grade

Total: 1116 sqft

Excluded: 416 sqft

#		Dimensions	sqft	Counted as living area
1	Patio	32'10" x 13'1"	430 sq. ft	No
2	Recreation Room	18'9" x 25'10"	485 sq. ft	Yes
3	Hall	13'6" x 5'5"	74 sq. ft	Yes
4	Bedroom	14'5" x 13'7"	196 sq. ft	Yes
5	Bath	6'8" x 10'2"	68 sq. ft	Yes
6	Utility	23'7" x 11'10"	279 sq. ft	Yes



Room dimensions

Floor 2

Total: 1171 sqft

Excluded: 957 sqft

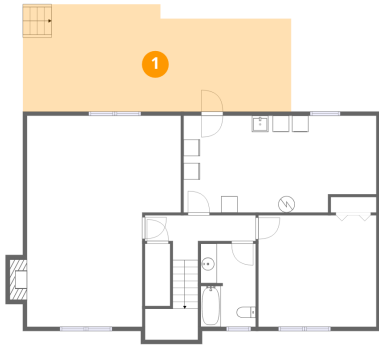
#		Dimensions	sqft	Counted as living area
7	Living Room	17'6" x 13'10"	243 sq. ft	Yes
8	Dining Area	10'8" x 13'2"	140 sq. ft	Yes
9	Kitchen	9'11" x 13'2"	131 sq. ft	Yes
10	Bath	6'5" x 4'3"	27 sq. ft	Yes
11	Bedroom	10'6" x 11'4"	118 sq. ft	Yes
12	Carport	13'11" x 28'4"	394 sq. ft	No
13	Porch	4'3" x 4'9"	208 sq. ft	No
14	Hall	14'5" x 5'6"	79 sq. ft	Yes
15	Bedroom	10'8" x 8'1"	86 sq. ft	Yes
16	Foyer	6'5" x 3'10"	25 sq. ft	Yes
17	Bath	6'5" x 8'7"	55 sq. ft	Yes

Home data report

262 Mountain View Road, Troutville, Virginia, United States

#		Dimensions	sqft	Counted as living area
18	Primary Bedroom	14'9" x 13'2"	194 sq. ft	Yes
19	Deck	32'2" x 12'9"	410 sq. ft	No

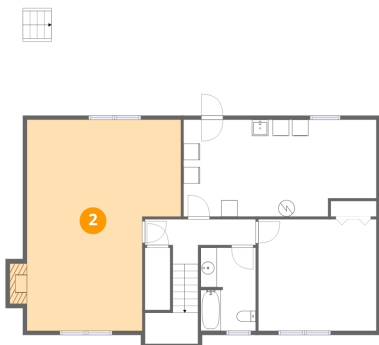
1 Floor 1 - Patio



Dimensions: 32'10" x 13'1"
Area: 430 sq. ft
Counted as living area: No

Heated: No
Finished: No
Enclosed: No
Contiguous: Yes
Permitted: Yes
Wet space: No
Addition: No
Conversion: No

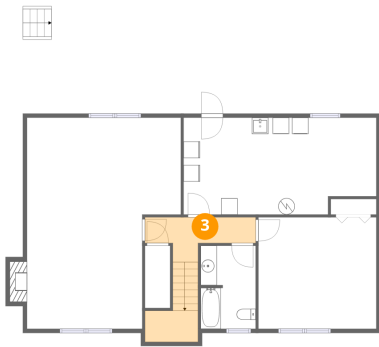
2 Floor 1 - Recreation Room



Dimensions: 18'9" x 25'10"
Area: 485 sq. ft
Counted as living area: Yes

Heated: Yes
Finished: Yes
Enclosed: Yes
Contiguous: Yes
Permitted: Yes
Wet space: No
Addition: No
Conversion: No

3 Floor 1 - Hall



Dimensions: 13'6" x 5'5"
Area: 74 sq. ft
Counted as living area: Yes

Heated: Yes
Finished: Yes
Enclosed: Yes
Contiguous: Yes
Permitted: Yes
Wet space: No
Addition: No
Conversion: No

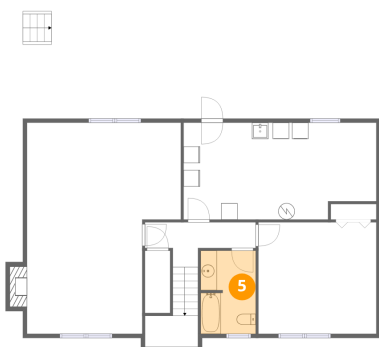
4 Floor 1 - Bedroom



Dimensions: 14'5" x 13'7"
Area: 196 sq. ft
Counted as living area: Yes

Heated: Yes
Finished: Yes
Enclosed: Yes
Contiguous: Yes
Permitted: Yes
Wet space: No
Addition: No
Conversion: No

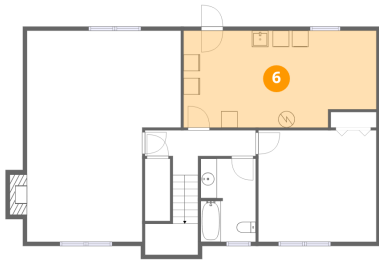
5 Floor 1 - Bath



Dimensions: 6'8" x 10'2"
Area: 68 sq. ft
Counted as living area: Yes

Heated: Yes
Finished: Yes
Enclosed: Yes
Contiguous: Yes
Permitted: Yes
Wet space: Yes
Addition: No
Conversion: No

6 Floor 1 - Utility



Dimensions: 23'7" x 11'10"
Area: 279 sq. ft
Counted as living area: Yes

Heated: Yes
Finished: Yes
Enclosed: Yes
Contiguous: Yes
Permitted: Yes
Wet space: No
Addition: No
Conversion: No

7 Floor 2 - Living Room



Dimensions: 17'6" x 13'10"
Area: 243 sq. ft
Counted as living area: Yes

Heated: Yes
Finished: Yes
Enclosed: Yes
Contiguous: Yes
Permitted: Yes
Wet space: No
Addition: No
Conversion: No

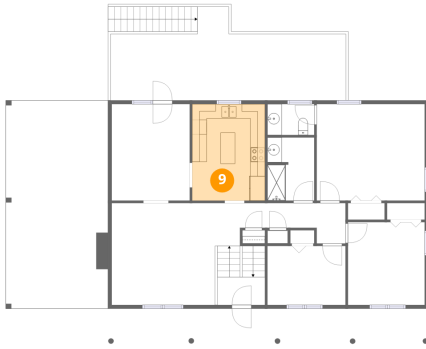
8 Floor 2 - Dining Area



Dimensions: 10'8" x 13'2"
Area: 140 sq. ft
Counted as living area: Yes

Heated: Yes
Finished: Yes
Enclosed: Yes
Contiguous: Yes
Permitted: Yes
Wet space: No
Addition: No
Conversion: No

9 Floor 2 - Kitchen



Dimensions: 9'11" x 13'2"
Area: 131 sq. ft
Counted as living area: Yes

Heated: Yes
Finished: Yes
Enclosed: Yes
Contiguous: Yes
Permitted: Yes
Wet space: No
Addition: No
Conversion: No

10 Floor 2 - Bath



Dimensions: 6'5" x 4'3"
Area: 27 sq. ft
Counted as living area: Yes

Heated: Yes
Finished: Yes
Enclosed: Yes
Contiguous: Yes
Permitted: Yes
Wet space: Yes
Addition: No
Conversion: No

11 Floor 2 - Bedroom



Dimensions: 10'6" x 11'4"
Area: 118 sq. ft
Counted as living area: Yes

Heated: Yes
Finished: Yes
Enclosed: Yes
Contiguous: Yes
Permitted: Yes
Wet space: No
Addition: No
Conversion: No

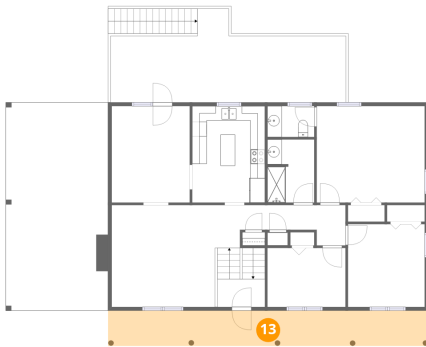
12 Floor 2 - Carport



Dimensions: 13'11" x 28'4"
Area: 394 sq. ft
Counted as living area: No

Heated: No
Finished: Yes
Enclosed: No
Contiguous: Yes
Permitted: Yes
Wet space: No
Addition: No
Conversion: No

13 Floor 2 - Porch



Dimensions: 43'9" x 4'9"
Area: 208 sq. ft
Counted as living area: No

Heated: No
Finished: No
Enclosed: No
Contiguous: Yes
Permitted: Yes
Wet space: No
Addition: No
Conversion: No

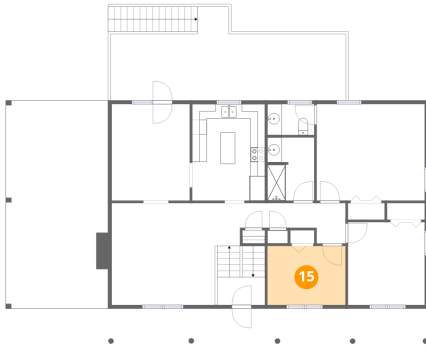
14 Floor 2 - Hall



Dimensions: 14'5" x 5'6"
Area: 79 sq. ft
Counted as living area: Yes

Heated: Yes
Finished: Yes
Enclosed: Yes
Contiguous: Yes
Permitted: Yes
Wet space: No
Addition: No
Conversion: No

15 Floor 2 - Bedroom



Dimensions: 10'8" x 8'1"
Area: 86 sq. ft
Counted as living area: Yes

Heated: Yes
Finished: Yes
Enclosed: Yes
Contiguous: Yes
Permitted: Yes
Wet space: No
Addition: No
Conversion: No

16 Floor 2 - Foyer



Dimensions: 6'5" x 3'10"
Area: 25 sq. ft
Counted as living area: Yes

Heated: Yes
Finished: Yes
Enclosed: Yes
Contiguous: Yes
Permitted: Yes
Wet space: No
Addition: No
Conversion: No

17 Floor 2 - Bath



Dimensions: 6'5" x 8'7"
Area: 55 sq. ft
Counted as living area: Yes

Heated: Yes
Finished: Yes
Enclosed: Yes
Contiguous: Yes
Permitted: Yes
Wet space: Yes
Addition: No
Conversion: No

18 Floor 2 - Primary Bedroom



Dimensions: 14'9" x 13'2"
Area: 194 sq. ft
Counted as living area: Yes

Heated: Yes
Finished: Yes
Enclosed: Yes
Contiguous: Yes
Permitted: Yes
Wet space: No
Addition: No
Conversion: No

19 Floor 2 - Deck



Dimensions: 32'2" x 12'9"
Area: 410 sq. ft
Counted as living area: No

Heated: No
Finished: No
Enclosed: No
Contiguous: Yes
Permitted: Yes
Wet space: No
Addition: No
Conversion: No