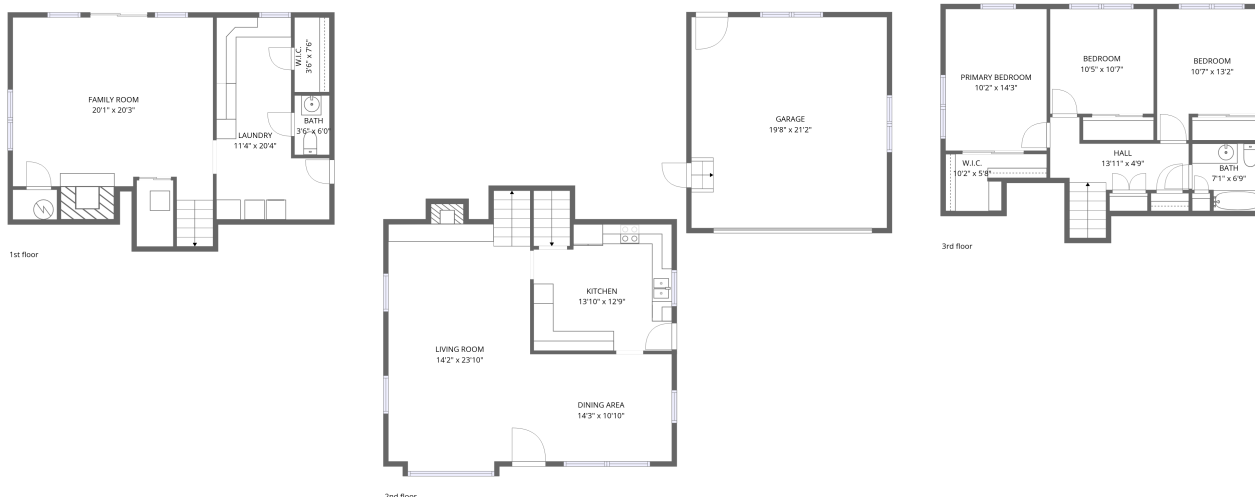


## Home data report

1419 East Forest Avenue, Wheaton, DuPage County, Illinois,  
United States, 60187



**Total Area: 1964 sq. ft**

1st Floor: 623 sq. ft, 2nd Floor: 707 sq. ft, 3rd Floor: 634 sq. ft

Excluded: Undefined 38 sq. ft, Garage 417 sq. ft, Embedded window 10 sq. ft, Fireplace 9 sq. ft, Walls: 215 sq. ft

## Property summary

 **3** Floors

 **3** Bedrooms

 **1** Bathrooms

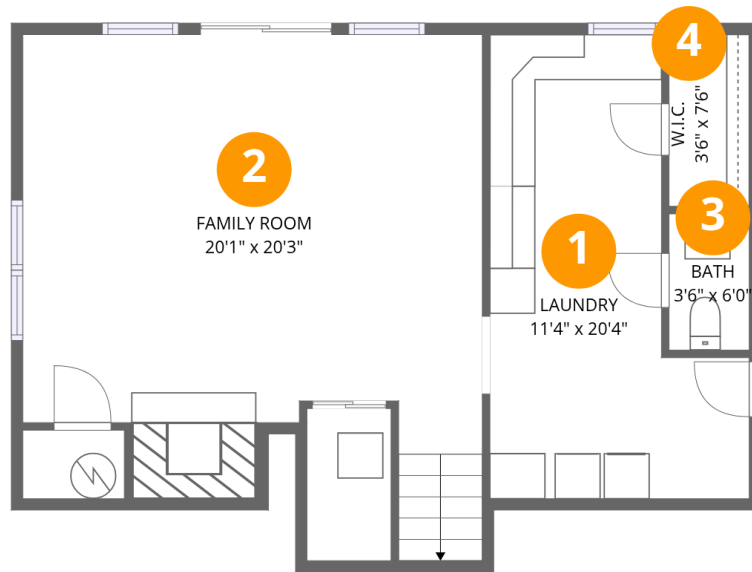
Home data report

**1419 East Forest Avenue, Wheaton, DuPage County, Illinois,  
United States, 60187**

 **1**  
Half baths

 **1**  
Garages

1419 East Forest Avenue, Wheaton, DuPage County, Illinois,  
United States, 60187



## Room dimensions

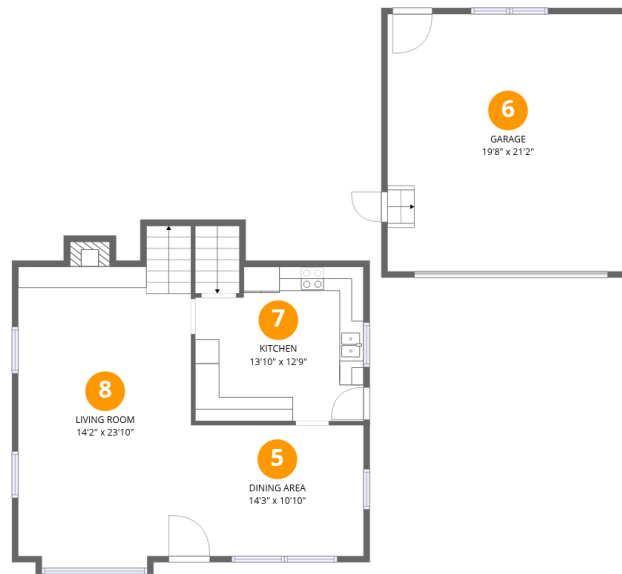
Floor 1

Total:623sqft Excluded: 38sqft

#		Dimensions	sqft	Counted as living area
1	Laundry	11'4" x 20'4"	177 sq. ft	Yes
2	Family Room	20'1" x 20'3"	378 sq. ft	Yes
3	Bath	3'6" x 6'0"	21 sq. ft	Yes
4	W.I.C.	3'6" x 7'6"	26 sq. ft	Yes

## Home data report

1419 East Forest Avenue, Wheaton, DuPage County, Illinois,  
United States, 60187



## Room dimensions

Floor 2

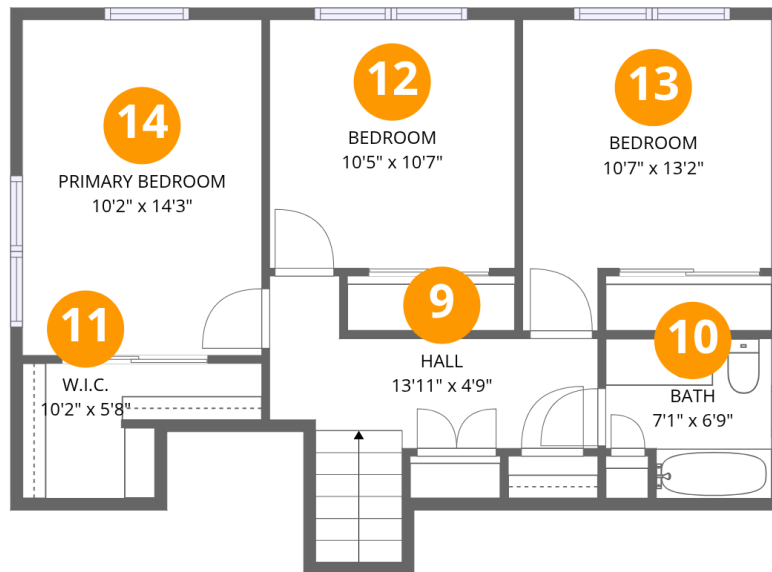
Total:707sqft

Excluded: 436sqft

#		Dimensions	sqft	Counted as living area
5	Dining Area	14'3" x 10'10"	154 sq. ft	Yes
6	Garage	19'8" x 21'2"	417 sq. ft	No
7	Kitchen	13'10" x 12'9"	167 sq. ft	Yes
8	Living Room	14'2" x 23'10"	359 sq. ft	Yes

Home data report

1419 East Forest Avenue, Wheaton, DuPage County, Illinois, United States, 60187



## Room dimensions

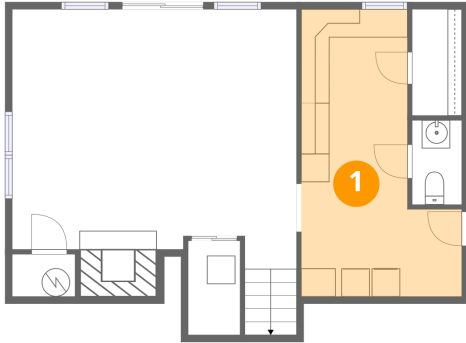
Floor 3

Total:634sqft

Excluded: 0sqft

#		Dimensions	sqft	Counted as living area
9	Hall	13'11" x 4'9"	88 sq. ft	Yes
10	Bath	7'1" x 6'9"	43 sq. ft	Yes
11	W.I.C.	10'2" x 5'8"	43 sq. ft	Yes
12	Bedroom	10'5" x 10'7"	110 sq. ft	Yes
13	Bedroom	10'7" x 13'2"	120 sq. ft	Yes
14	Primary Bedroom	10'2" x 14'3"	145 sq. ft	Yes

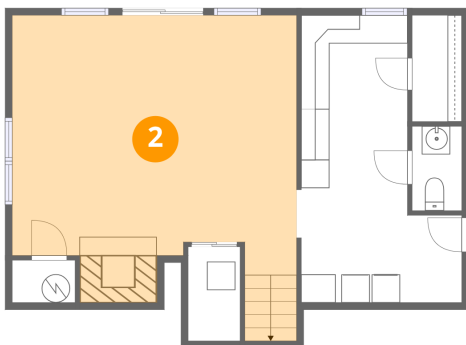
## 1 Floor 1 - Laundry



Dimensions: 11'4" x 20'4"  
Area: 177 sq. ft  
Counted as living area: Yes

Heated: Yes  
Finished: Yes  
Enclosed: Yes  
Contiguous: Yes  
Permitted: Yes  
Wet space: No  
Addition: No  
Conversion: No

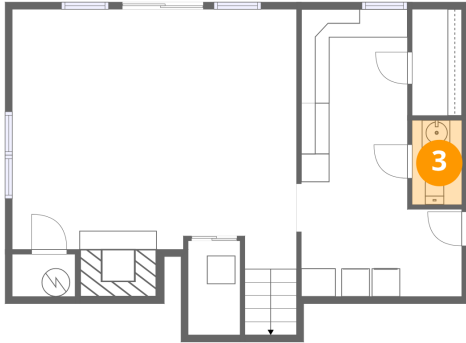
## 2 Floor 1 - Family Room



Dimensions: 20'1" x 20'3"  
Area: 378 sq. ft  
Counted as living area: Yes

Heated: Yes  
Finished: Yes  
Enclosed: Yes  
Contiguous: Yes  
Permitted: Yes  
Wet space: No  
Addition: No  
Conversion: No

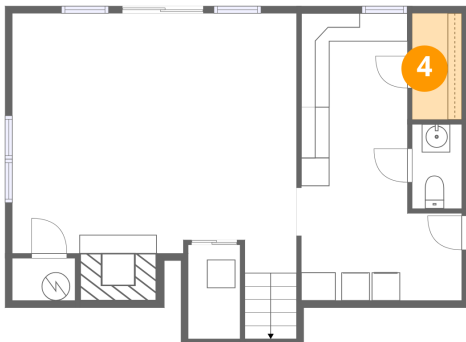
**3** Floor 1 - Bath



Dimensions: 3'6" x 6'0"  
Area: 21 sq. ft  
Counted as living area: Yes

Heated: Yes  
Finished: Yes  
Enclosed: Yes  
Contiguous: Yes  
Permitted: Yes  
Wet space: Yes  
Addition: No  
Conversion: No

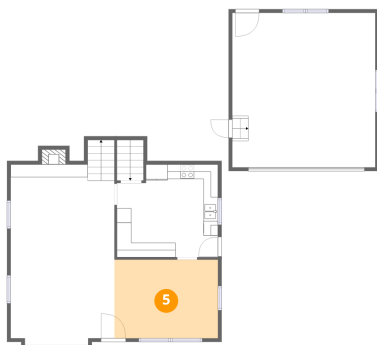
**4** Floor 1 - W.I.C.



Dimensions: 3'6" x 7'6"  
Area: 26 sq. ft  
Counted as living area: Yes

Heated: Yes  
Finished: Yes  
Enclosed: Yes  
Contiguous: Yes  
Permitted: Yes  
Wet space: No  
Addition: No  
Conversion: No

**5** Floor 2 - Dining Area

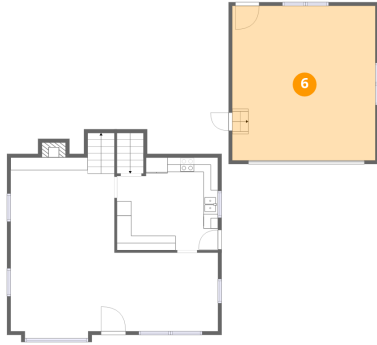


Dimensions: 14'3" x 10'10"  
Area: 154 sq. ft  
Counted as living area: Yes

Heated: Yes  
Finished: Yes  
Enclosed: Yes  
Contiguous: Yes  
Permitted: Yes  
Wet space: No  
Addition: No  
Conversion: No

1419 East Forest Avenue, Wheaton, DuPage County, Illinois,  
United States, 60187

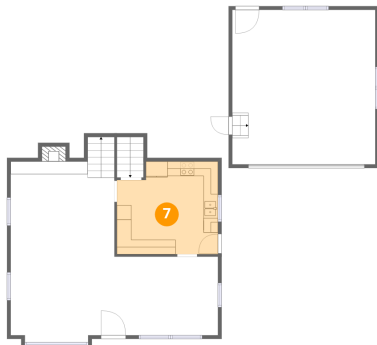
## 6 Floor 2 - Garage



Dimensions: 19'8" x 21'2"  
Area: 417 sq. ft  
Counted as living area: No

Heated: No  
Finished: No  
Enclosed: Yes  
Contiguous: Yes  
Permitted: Yes  
Wet space: No  
Addition: No  
Conversion: No

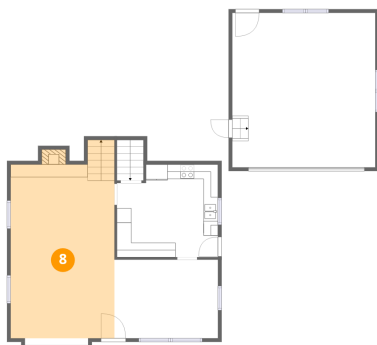
## 7 Floor 2 - Kitchen



Dimensions: 13'10" x 12'9"  
Area: 167 sq. ft  
Counted as living area: Yes

Heated: Yes  
Finished: Yes  
Enclosed: Yes  
Contiguous: Yes  
Permitted: Yes  
Wet space: No  
Addition: No  
Conversion: No

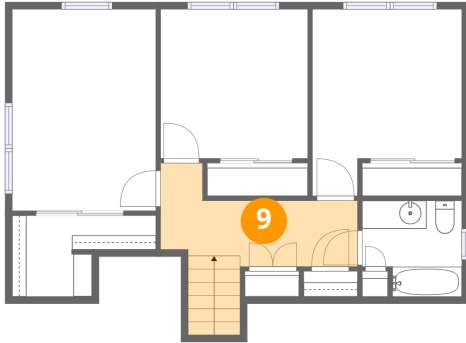
## 8 Floor 2 - Living Room



Dimensions: 14'2" x 23'10"  
Area: 359 sq. ft  
Counted as living area: Yes

Heated: Yes  
Finished: Yes  
Enclosed: Yes  
Contiguous: Yes  
Permitted: Yes  
Wet space: No  
Addition: No  
Conversion: No

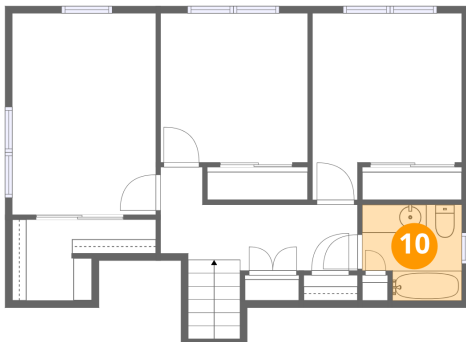
**9** Floor 3 - Hall



Dimensions: 13'11" x 4'9"  
Area: 88 sq. ft  
Counted as living area: Yes

Heated: Yes  
Finished: Yes  
Enclosed: Yes  
Contiguous: Yes  
Permitted: Yes  
Wet space: No  
Addition: No  
Conversion: No

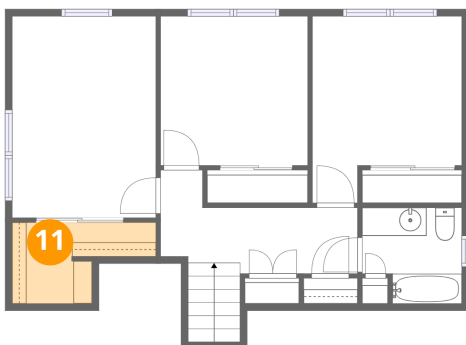
**10** Floor 3 - Bath



Dimensions: 7'1" x 6'9"  
Area: 43 sq. ft  
Counted as living area: Yes

Heated: Yes  
Finished: Yes  
Enclosed: Yes  
Contiguous: Yes  
Permitted: Yes  
Wet space: Yes  
Addition: No  
Conversion: No

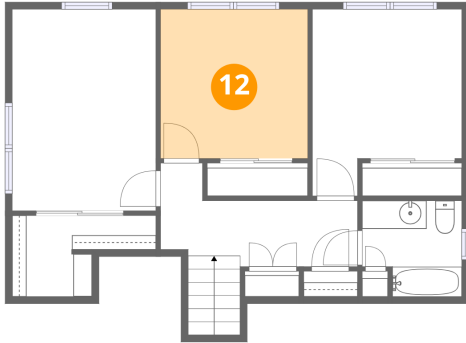
**11** Floor 3 - W.I.C.



Dimensions: 10'2" x 5'8"  
Area: 43 sq. ft  
Counted as living area: Yes

Heated: Yes  
Finished: Yes  
Enclosed: Yes  
Contiguous: Yes  
Permitted: Yes  
Wet space: No  
Addition: No  
Conversion: No

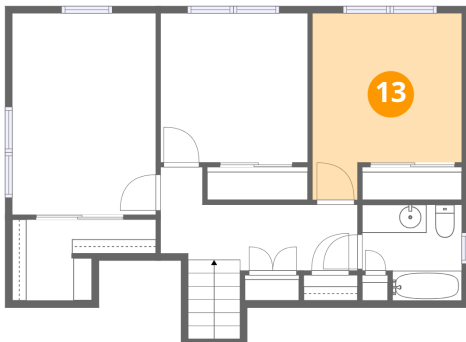
**12** Floor 3 - Bedroom



Dimensions: 10'5" x 10'7"  
Area: 110 sq. ft  
Counted as living area: Yes

Heated: Yes  
Finished: Yes  
Enclosed: Yes  
Contiguous: Yes  
Permitted: Yes  
Wet space: No  
Addition: No  
Conversion: No

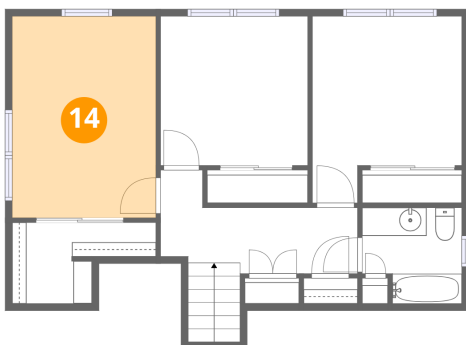
**13** Floor 3 - Bedroom



Dimensions: 10'7" x 13'2"  
Area: 120 sq. ft  
Counted as living area: Yes

Heated: Yes  
Finished: Yes  
Enclosed: Yes  
Contiguous: Yes  
Permitted: Yes  
Wet space: No  
Addition: No  
Conversion: No

**14** Floor 3 - Primary Bedroom



Dimensions: 10'2" x 14'3"  
Area: 145 sq. ft  
Counted as living area: Yes

Heated: Yes  
Finished: Yes  
Enclosed: Yes  
Contiguous: Yes  
Permitted: Yes  
Wet space: No  
Addition: No  
Conversion: No