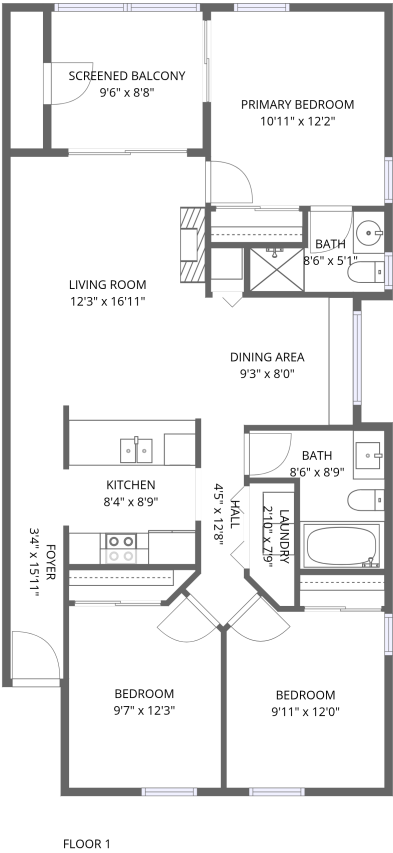


Home report

3001 58th Avenue South, Greater Pinellas Point, St. Petersburg,  
Pinellas County, Florida, United States, 33712, 1216



**Total Area: 1009 sq. ft**  
Floor 1: 1009 sq. ft  
Excluded: Screened balcony 82 sq. ft, Walls: 0 sq. ft

Property summary

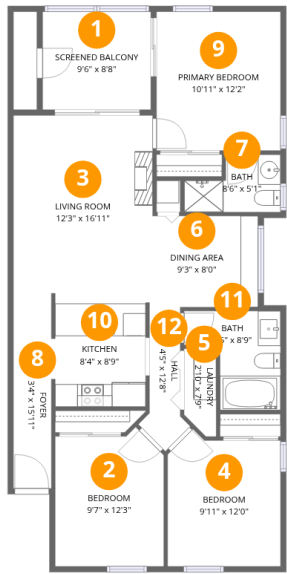
 **1** Floors

 **3** Bedrooms

 **2** Bathrooms

Home report

3001 58th Avenue South, Greater Pinellas Point, St. Petersburg, Pinellas County, Florida, United States, 33712, 1216



Room dimensions

Floor 1 Total:1009sqft    Excluded: 82sqft

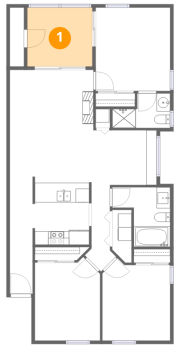
#		Max Dimensions	sqft	Included
1	Screened Balcony	9'6" x 8'8"	82 sq. ft	No
2	Bedroom	9'7" x 12'3"	109 sq. ft	Yes
3	Living Room	12'3" x 16'11"	207 sq. ft	Yes
4	Bedroom	9'11" x 12'0"	110 sq. ft	Yes
5	Laundry	2'10" x 7'9"	20 sq. ft	Yes
6	Dining Area	9'3" x 8'0"	75 sq. ft	Yes
7	Bath	8'6" x 5'1"	35 sq. ft	Yes
8	Foyer	3'4" x 15'11"	53 sq. ft	Yes
9	Primary Bedroom	10'11" x 12'2"	134 sq. ft	Yes
10	Kitchen	8'4" x 8'9"	72 sq. ft	Yes
11	Bath	8'6" x 8'9"	56 sq. ft	Yes

Home report

3001 58th Avenue South, Greater Pinellas Point, St. Petersburg,  
Pinellas County, Florida, United States, 33712, 1216

#		Max Dimensions	sqft	Included
12	Hall	4'5" x 12'8"	34 sq. ft	Yes

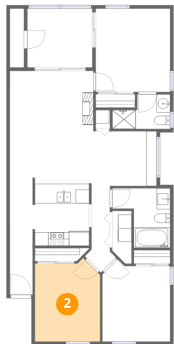
1 Floor 1 - Screened Balcony



Max Dimensions: 9'6" x 8'8"  
Calculated Area: 82 sq. ft  
Included: No

Heated: No  
Finished: No  
Enclosed: No  
Contiguous: Yes  
Permitted: Yes  
Wet space: No  
Addition: No  
Conversion: No

2 Floor 1 - Bedroom



Max Dimensions: 9'7" x 12'3"  
Calculated Area: 109 sq. ft  
Included: Yes

Heated: Yes  
Finished: Yes  
Enclosed: Yes  
Contiguous: Yes  
Permitted: Yes  
Wet space: No  
Addition: No  
Conversion: No

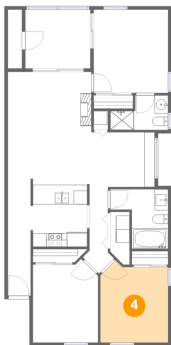
3 Floor 1 - Living Room



Max Dimensions: 12'3" x 16'11"  
Calculated Area: 207 sq. ft  
Included: Yes

Heated: Yes  
Finished: Yes  
Enclosed: Yes  
Contiguous: Yes  
Permitted: Yes  
Wet space: No  
Addition: No  
Conversion: No

4 Floor 1 - Bedroom



Max Dimensions: 9'11" x 12'0"  
Calculated Area: 110 sq. ft  
Included: Yes

Heated: Yes  
Finished: Yes  
Enclosed: Yes  
Contiguous: Yes  
Permitted: Yes  
Wet space: No  
Addition: No  
Conversion: No

5 Floor 1 - Laundry



Max Dimensions: 2'10" x 7'9"  
Calculated Area: 20 sq. ft  
Included: Yes

Heated: Yes  
Finished: Yes  
Enclosed: Yes  
Contiguous: Yes  
Permitted: Yes  
Wet space: No  
Addition: No  
Conversion: No

6 Floor 1 - Dining Area



Max Dimensions: 9'3" x 8'0"  
Calculated Area: 75 sq. ft  
Included: Yes

Heated: Yes  
Finished: Yes  
Enclosed: Yes  
Contiguous: Yes  
Permitted: Yes  
Wet space: No  
Addition: No  
Conversion: No

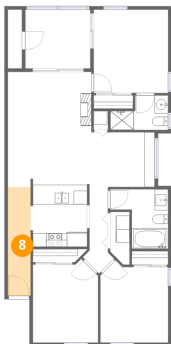
7 Floor 1 - Bath



Max Dimensions: 8'6" x 5'1"  
Calculated Area: 35 sq. ft  
Included: Yes

Heated: Yes  
Finished: Yes  
Enclosed: Yes  
Contiguous: Yes  
Permitted: Yes  
Wet space: Yes  
Addition: No  
Conversion: No

8 Floor 1 - Foyer



Max Dimensions: 3'4" x 15'11"  
Calculated Area: 53 sq. ft  
Included: Yes

Heated: Yes  
Finished: Yes  
Enclosed: Yes  
Contiguous: Yes  
Permitted: Yes  
Wet space: No  
Addition: No  
Conversion: No

## Home report

3001 58th Avenue South, Greater Pinellas Point, St. Petersburg,  
Pinellas County, Florida, United States, 33712, 1216

### 9 Floor 1 - Primary Bedroom

---

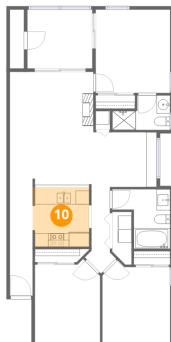


Max Dimensions: 10'11" x 12'2"  
Calculated Area: 134 sq. ft  
Included: Yes

Heated: Yes  
Finished: Yes  
Enclosed: Yes  
Contiguous: Yes  
Permitted: Yes  
Wet space: No  
Addition: No  
Conversion: No

### 10 Floor 1 - Kitchen

---



Max Dimensions: 8'4" x 8'9"  
Calculated Area: 72 sq. ft  
Included: Yes

Heated: Yes  
Finished: Yes  
Enclosed: Yes  
Contiguous: Yes  
Permitted: Yes  
Wet space: No  
Addition: No  
Conversion: No

### 11 Floor 1 - Bath

---



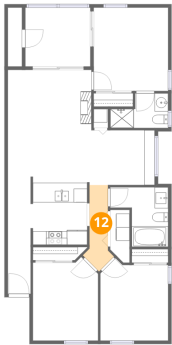
Max Dimensions: 8'6" x 8'9"  
Calculated Area: 56 sq. ft  
Included: Yes

Heated: Yes  
Finished: Yes  
Enclosed: Yes  
Contiguous: Yes  
Permitted: Yes  
Wet space: Yes  
Addition: No  
Conversion: No

Home report

3001 58th Avenue South, Greater Pinellas Point, St. Petersburg,  
Pinellas County, Florida, United States, 33712, 1216

12 Floor 1 - Hall



Max Dimensions: 4'5" x 12'8"  
Calculated Area: 34 sq. ft  
Included: Yes

Heated: Yes  
Finished: Yes  
Enclosed: Yes  
Contiguous: Yes  
Permitted: Yes  
Wet space: No  
Addition: No  
Conversion: No