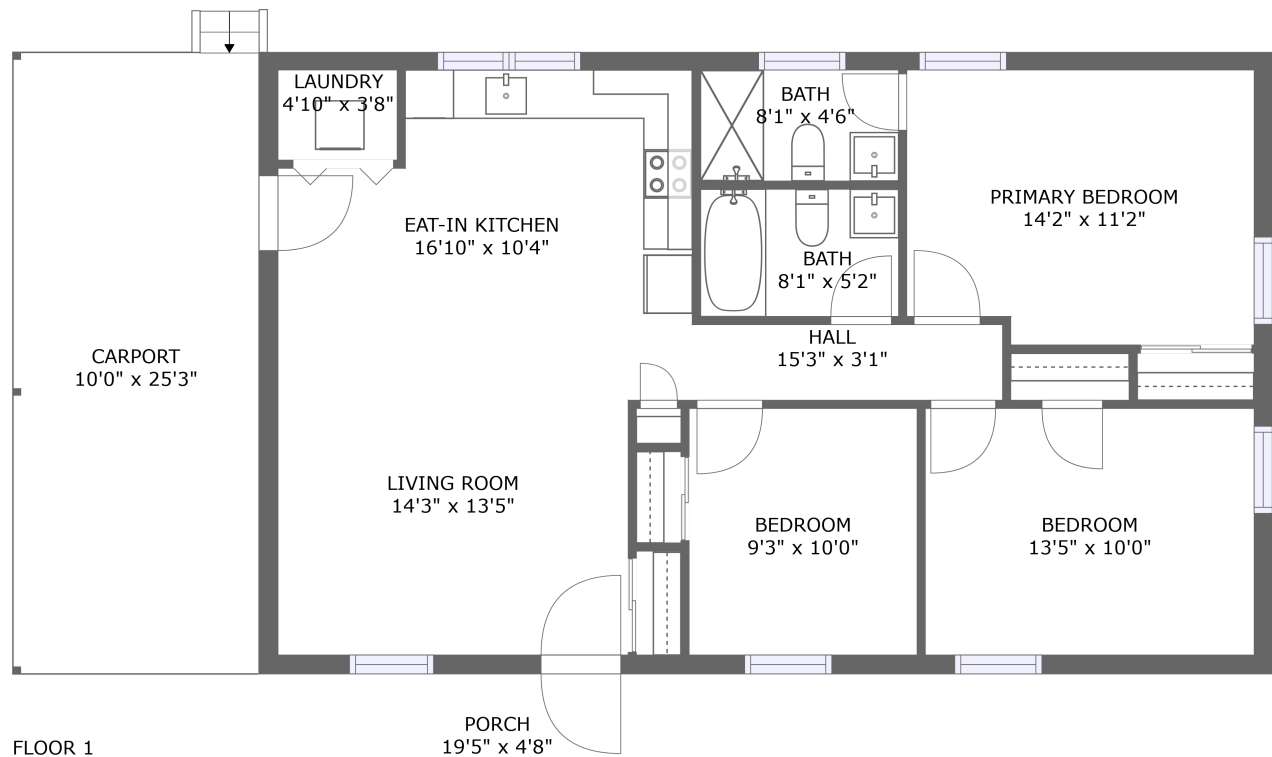


Home report

7929 Lauderdale County 41, Florence, Lauderdale County,
Alabama, United States, 35633




Total GLA: 1043 sq. ft


Floor 1: 1043 sq. ft

Excluded: Porch 90 sq. ft, Carport 254 sq. ft

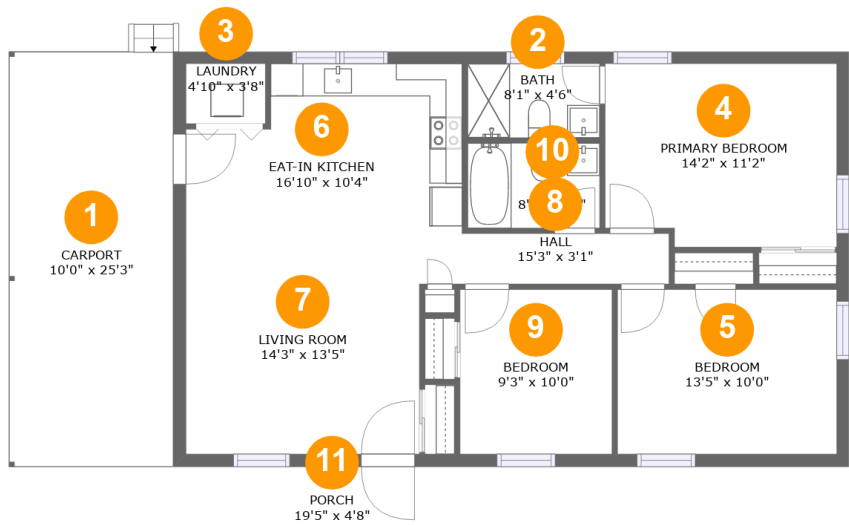
Property summary

 **1** Floors

 **3** Bedrooms

 **2** Bathrooms

7929 Lauderdale County 41, Florence, Lauderdale County,
Alabama, United States, 35633



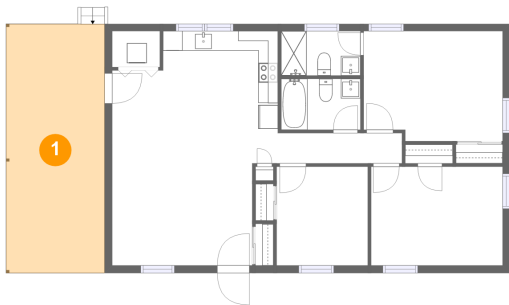
Room dimensions

Floor 1 Total:1043sqft Excluded: 344sqft

#		Max Dimensions	sqft	Included
1	Carport	10'0" x 25'3"	254 sq. ft	No
2	Bath	8'1" x 4'6"	36 sq. ft	Yes
3	Laundry	4'10" x 3'8"	18 sq. ft	Yes
4	Primary Bedroom	14'2" x 11'2"	153 sq. ft	Yes
5	Bedroom	13'5" x 10'0"	134 sq. ft	Yes
6	Eat-in Kitchen	16'10" x 10'4"	154 sq. ft	Yes
7	Living Room	14'3" x 13'5"	192 sq. ft	Yes
8	Hall	15'3" x 3'1"	47 sq. ft	Yes
9	Bedroom	9'3" x 10'0"	93 sq. ft	Yes
10	Bath	8'1" x 5'2"	42 sq. ft	Yes
11	Porch	19'5" x 4'8"	90 sq. ft	No

7929 Lauderdale County 41, Florence, Lauderdale County,
Alabama, United States, 35633

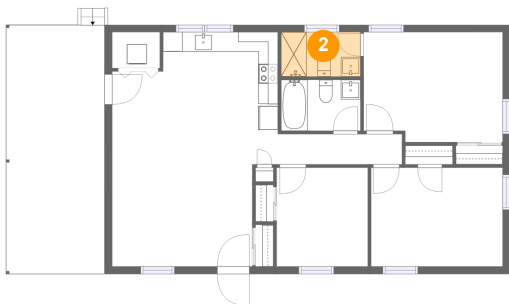
1 Floor 1 - Carport



Max Dimensions: 10'0" x 25'3"
Calculated Area: 254 sq. ft
Included: No

Heated: No
Finished: Yes
Enclosed: No
Contiguous: Yes
Permitted: Yes
Wet space: No
Addition: No
Conversion: No

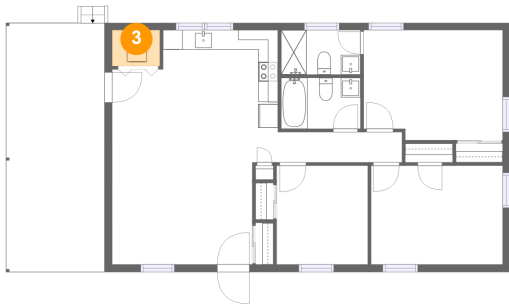
2 Floor 1 - Bath



Max Dimensions: 8'1" x 4'6"
Calculated Area: 36 sq. ft
Included: Yes

Heated: Yes
Finished: Yes
Enclosed: Yes
Contiguous: Yes
Permitted: Yes
Wet space: Yes
Addition: No
Conversion: No

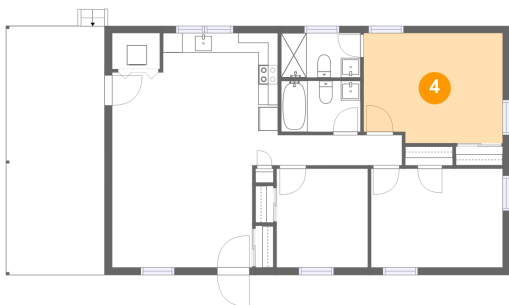
3 Floor 1 - Laundry



Max Dimensions: 4'10" x 3'8"
Calculated Area: 18 sq. ft
Included: Yes

Heated: Yes
Finished: Yes
Enclosed: Yes
Contiguous: Yes
Permitted: Yes
Wet space: No
Addition: No
Conversion: No

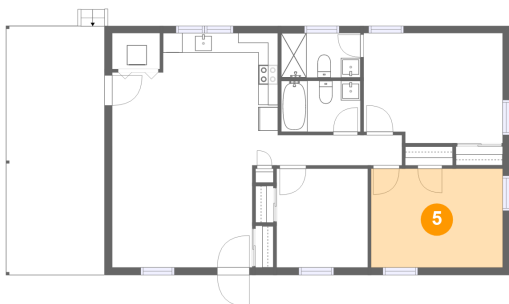
4 Floor 1 - Primary Bedroom



Max Dimensions: 14'2" x 11'2"
Calculated Area: 153 sq. ft
Included: Yes

Heated: Yes
Finished: Yes
Enclosed: Yes
Contiguous: Yes
Permitted: Yes
Wet space: No
Addition: No
Conversion: No

5 Floor 1 - Bedroom

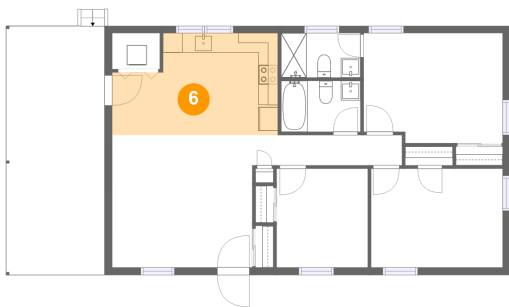


Max Dimensions: 13'5" x 10'0"
Calculated Area: 134 sq. ft
Included: Yes

Heated: Yes
Finished: Yes
Enclosed: Yes
Contiguous: Yes
Permitted: Yes
Wet space: No
Addition: No
Conversion: No

7929 Lauderdale County 41, Florence, Lauderdale County,
Alabama, United States, 35633

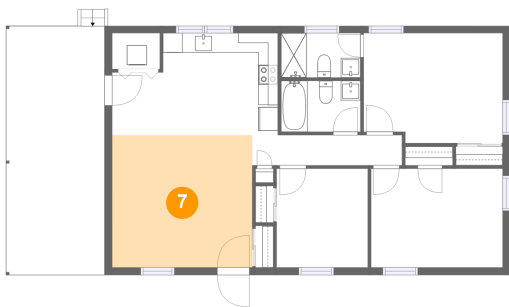
6 Floor 1 - Eat-in Kitchen



Max Dimensions: 16'10" x 10'4"
Calculated Area: 154 sq. ft
Included: Yes

Heated: Yes
Finished: Yes
Enclosed: Yes
Contiguous: Yes
Permitted: Yes
Wet space: No
Addition: No
Conversion: No

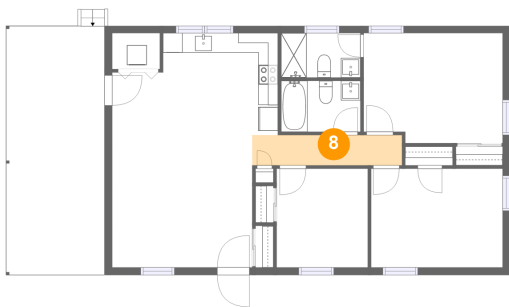
7 Floor 1 - Living Room



Max Dimensions: 14'3" x 13'5"
Calculated Area: 192 sq. ft
Included: Yes

Heated: Yes
Finished: Yes
Enclosed: Yes
Contiguous: Yes
Permitted: Yes
Wet space: No
Addition: No
Conversion: No

8 Floor 1 - Hall

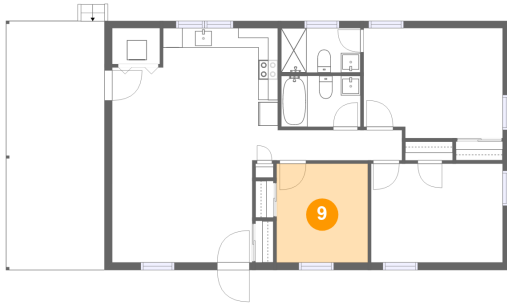


Max Dimensions: 15'3" x 3'1"
Calculated Area: 47 sq. ft
Included: Yes

Heated: Yes
Finished: Yes
Enclosed: Yes
Contiguous: Yes
Permitted: Yes
Wet space: No
Addition: No
Conversion: No

7929 Lauderdale County 41, Florence, Lauderdale County,
Alabama, United States, 35633

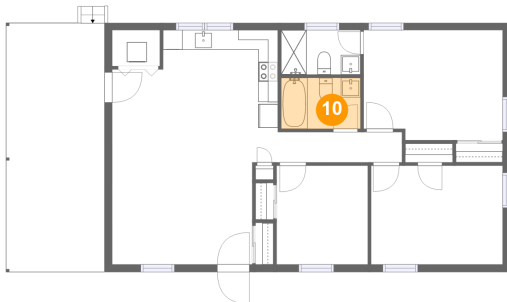
9 Floor 1 - Bedroom



Max Dimensions: 9'3" x 10'0"
Calculated Area: 93 sq. ft
Included: Yes

Heated: Yes
Finished: Yes
Enclosed: Yes
Contiguous: Yes
Permitted: Yes
Wet space: No
Addition: No
Conversion: No

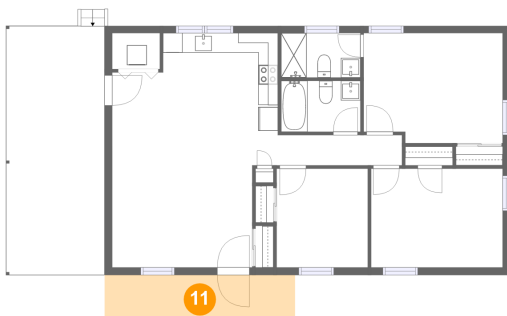
10 Floor 1 - Bath



Max Dimensions: 8'1" x 5'2"
Calculated Area: 42 sq. ft
Included: Yes

Heated: Yes
Finished: Yes
Enclosed: Yes
Contiguous: Yes
Permitted: Yes
Wet space: Yes
Addition: No
Conversion: No

11 Floor 1 - Porch



Max Dimensions: 19'5" x 4'8"
Calculated Area: 90 sq. ft
Included: No

Heated: No
Finished: Yes
Enclosed: No
Contiguous: Yes
Permitted: Yes
Wet space: No
Addition: No
Conversion: No