

Home report

125 Woodlake Drive, North Shore, Moneta, Franklin County,
Virginia, United States, 24121

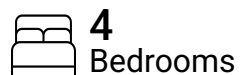


Total Area: 2067 sq. ft

Below Ground: 629 sq. ft, Floor 2: 923 sq. ft, Floor 3: 515 sq. ft

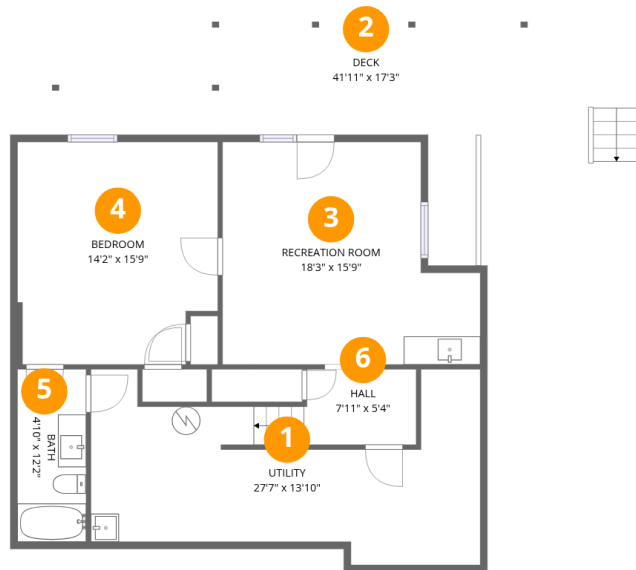
Excluded: Deck 888 sq. ft, Utility 273 sq. ft, Garage 420 sq. ft, Porch 67 sq. ft, Walls: 216 sq. ft

Property summary



Home report

125 Woodlake Drive, North Shore, Moneta, Franklin County, Virginia, United States, 24121



Room dimensions

Floor 1 Below ground

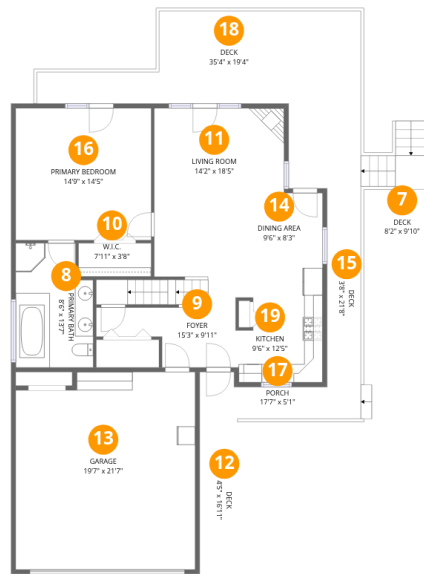
Total:629sqft

Excluded: 583sqft

#		Max Dimensions	sqft	Included
1	Utility	27'7" x 13'10"	271 sq. ft	No
2	Deck	41'11" x 17'3"	310 sq. ft	No
3	Recreation Room	18'3" x 15'9"	248 sq. ft	Yes
4	Bedroom	14'2" x 15'9"	215 sq. ft	Yes
5	Bath	4'10" x 12'2"	59 sq. ft	Yes
6	Hall	7'11" x 5'4"	42 sq. ft	Yes

Home report

125 Woodlake Drive, North Shore, Moneta, Franklin County,
Virginia, United States, 24121



Room dimensions

Floor 2

Total:923sqft

Excluded: 1065sqft

#		Max Dimensions	sqft	Included
7	Deck	8'2" x 9'10"	80 sq. ft	No
8	Primary Bath	8'6" x 13'7"	107 sq. ft	Yes
9	Foyer	15'3" x 9'11"	120 sq. ft	Yes
10	W.I.C.	7'11" x 3'8"	29 sq. ft	Yes
11	Living Room	14'2" x 18'5"	212 sq. ft	Yes
12	Deck	4'5" x 16'11"	76 sq. ft	No
13	Garage	19'7" x 21'7"	409 sq. ft	No
14	Dining Area	9'6" x 8'3"	78 sq. ft	Yes
15	Deck	3'8" x 21'8"	81 sq. ft	No
16	Primary Bedroom	14'9" x 14'5"	213 sq. ft	Yes
17	Porch	17'7" x 5'1"	67 sq. ft	No

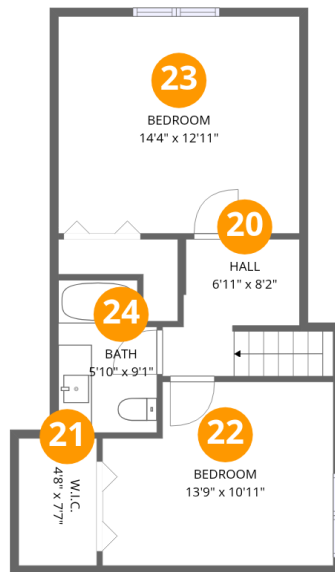
Home report

**125 Woodlake Drive, North Shore, Moneta, Franklin County,
Virginia, United States, 24121**

#		Max Dimensions	sqft	Included
18	Deck	35'4" x 19'4"	341 sq. ft	No
19	Kitchen	9'6" x 12'5"	111 sq. ft	Yes

Home report

125 Woodlake Drive, North Shore, Moneta, Franklin County,
Virginia, United States, 24121



Room dimensions

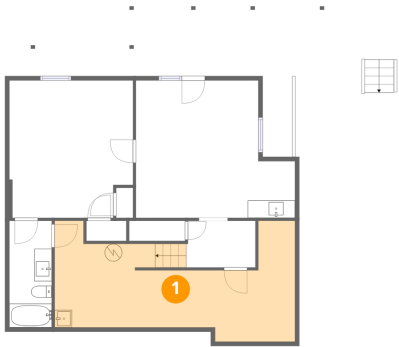
Floor 3

Total:515sqft

Excluded: 0sqft

#		Max Dimensions	sqft	Included
20	Hall	6'11" x 8'2"	64 sq. ft	Yes
21	W.I.C.	4'8" x 7'7"	35 sq. ft	Yes
22	Bedroom	13'9" x 10'11"	138 sq. ft	Yes
23	Bedroom	14'4" x 12'11"	186 sq. ft	Yes
24	Bath	5'10" x 9'1"	50 sq. ft	Yes

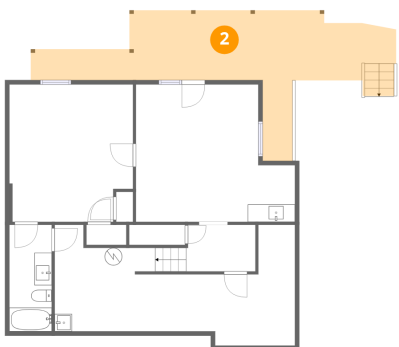
1 Floor 1 - Utility



Max Dimensions: 27'7" x
13'10"
Calculated Area: 271 sq. ft
Included: No

Heated: Yes
Finished: No
Enclosed: Yes
Contiguous:
Yes
Permitted: Yes
Wet space: No
Addition: No
Conversion: No

2 Floor 1 - Deck

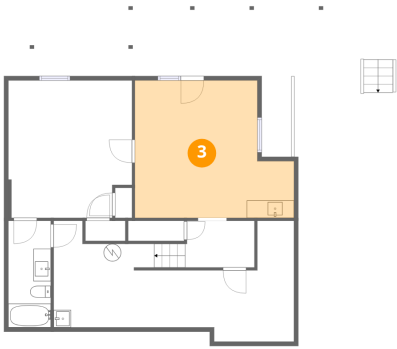


Max Dimensions: 41'11" x
17'3"
Calculated Area: 310 sq. ft
Included: No

Heated: No
Finished: No
Enclosed: No
Contiguous:
Yes
Permitted: Yes
Wet space: No
Addition: No
Conversion: No

125 Woodlake Drive, North Shore, Moneta, Franklin County,
Virginia, United States, 24121

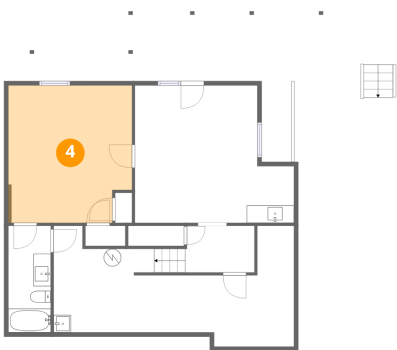
3 Floor 1 - Recreation Room



Max Dimensions: 18'3" x 15'9"
Calculated Area: 248 sq. ft
Included: Yes

Heated: Yes
Finished: Yes
Enclosed: Yes
Contiguous: Yes
Permitted: Yes
Wet space: No
Addition: No
Conversion: No

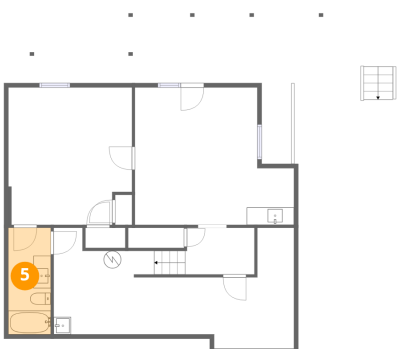
4 Floor 1 - Bedroom



Max Dimensions: 14'2" x 15'9"
Calculated Area: 215 sq. ft
Included: Yes

Heated: Yes
Finished: Yes
Enclosed: Yes
Contiguous: Yes
Permitted: Yes
Wet space: No
Addition: No
Conversion: No

5 Floor 1 - Bath

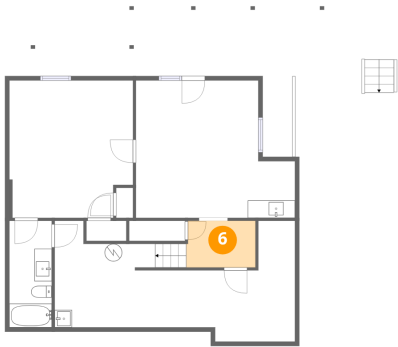


Max Dimensions: 4'10" x 12'2"
Calculated Area: 59 sq. ft
Included: Yes

Heated: Yes
Finished: Yes
Enclosed: Yes
Contiguous: Yes
Permitted: Yes
Wet space: Yes
Addition: No
Conversion: No

125 Woodlake Drive, North Shore, Moneta, Franklin County, Virginia, United States, 24121

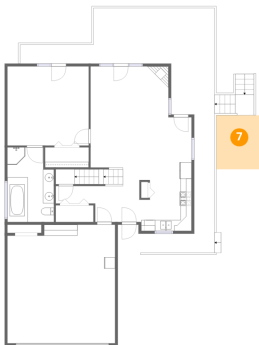
6 Floor 1 - Hall



Max Dimensions: 7'11" x 5'4"
Calculated Area: 42 sq. ft
Included: Yes

Heated: Yes
Finished: Yes
Enclosed: Yes
Contiguous: Yes
Permitted: Yes
Wet space: No
Addition: No
Conversion: No

7 Floor 2 - Deck



Max Dimensions: 8'2" x 9'10"
Calculated Area: 80 sq. ft
Included: No

Heated: No
Finished: No
Enclosed: No
Contiguous: Yes
Permitted: Yes
Wet space: No
Addition: No
Conversion: No

8 Floor 2 - Primary Bath



Max Dimensions: 8'6" x 13'7"
Calculated Area: 107 sq. ft
Included: Yes

Heated: Yes
Finished: Yes
Enclosed: Yes
Contiguous: Yes
Permitted: Yes
Wet space: Yes
Addition: No
Conversion: No

125 Woodlake Drive, North Shore, Moneta, Franklin County,
Virginia, United States, 24121

9 Floor 2 - Foyer



Max Dimensions: 15'3" x 9'11"
Calculated Area: 120 sq. ft
Included: Yes

Heated: Yes
Finished: Yes
Enclosed: Yes
Contiguous: Yes
Permitted: Yes
Wet space: No
Addition: No
Conversion: No

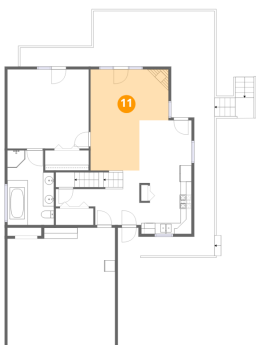
10 Floor 2 - W.I.C.



Max Dimensions: 7'11" x 3'8"
Calculated Area: 29 sq. ft
Included: Yes

Heated: Yes
Finished: Yes
Enclosed: Yes
Contiguous: Yes
Permitted: Yes
Wet space: No
Addition: No
Conversion: No

11 Floor 2 - Living Room



Max Dimensions: 14'2" x 18'5"
Calculated Area: 212 sq. ft
Included: Yes

Heated: Yes
Finished: Yes
Enclosed: Yes
Contiguous: Yes
Permitted: Yes
Wet space: No
Addition: No
Conversion: No

125 Woodlake Drive, North Shore, Moneta, Franklin County,
Virginia, United States, 24121

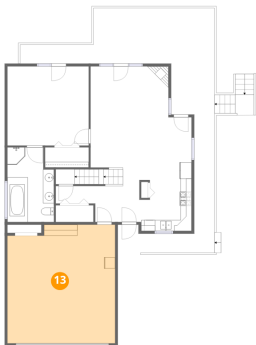
12 Floor 2 - Deck



Max Dimensions: 4'5" x
16'11"
Calculated Area: 76 sq. ft
Included: No

Heated: No
Finished: No
Enclosed: No
Contiguous:
Yes
Permitted: Yes
Wet space: No
Addition: No
Conversion: No

13 Floor 2 - Garage



Max Dimensions: 19'7" x
21'7"
Calculated Area: 409 sq. ft
Included: No

Heated: No
Finished: No
Enclosed: Yes
Contiguous:
Yes
Permitted: Yes
Wet space: No
Addition: No
Conversion: No

14 Floor 2 - Dining Area

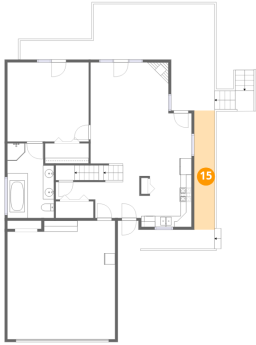


Max Dimensions: 9'6" x 8'3"
Calculated Area: 78 sq. ft
Included: Yes

Heated: Yes
Finished: Yes
Enclosed: Yes
Contiguous: Yes
Permitted: Yes
Wet space: No
Addition: No
Conversion: No

125 Woodlake Drive, North Shore, Moneta, Franklin County,
Virginia, United States, 24121

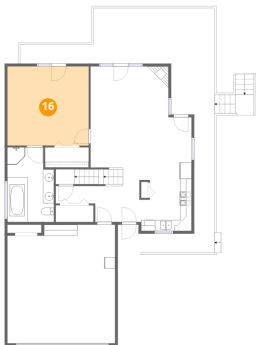
15 Floor 2 - Deck



Max Dimensions: 3'8" x
21'8"
Calculated Area: 81 sq. ft
Included: No

Heated: No
Finished: No
Enclosed: No
Contiguous:
Yes
Permitted: Yes
Wet space: No
Addition: No
Conversion: No

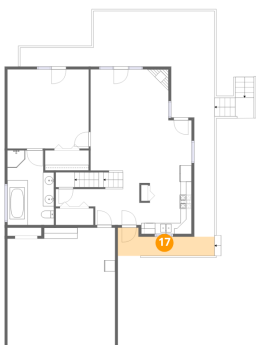
16 Floor 2 - Primary Bedroom



Max Dimensions: 14'9" x
14'5"
Calculated Area: 213 sq. ft
Included: Yes

Heated: Yes
Finished: Yes
Enclosed: Yes
Contiguous:
Yes
Permitted: Yes
Wet space: No
Addition: No
Conversion: No

17 Floor 2 - Porch

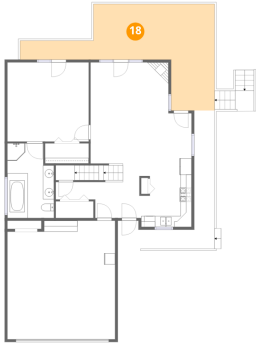


Max Dimensions: 17'7" x
5'1"
Calculated Area: 67 sq. ft
Included: No

Heated: No
Finished: No
Enclosed: No
Contiguous:
Yes
Permitted: Yes
Wet space: No
Addition: No
Conversion: No

125 Woodlake Drive, North Shore, Moneta, Franklin County,
Virginia, United States, 24121

18 Floor 2 - Deck



Max Dimensions: 35'4" x 19'4"
Calculated Area: 341 sq. ft
Included: No

Heated: No
Finished: No
Enclosed: No
Contiguous: Yes
Permitted: Yes
Wet space: No
Addition: No
Conversion: No

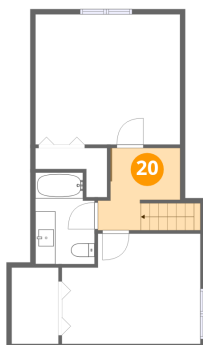
19 Floor 2 - Kitchen



Max Dimensions: 9'6" x 12'5"
Calculated Area: 111 sq. ft
Included: Yes

Heated: Yes
Finished: Yes
Enclosed: Yes
Contiguous: Yes
Permitted: Yes
Wet space: No
Addition: No
Conversion: No

20 Floor 3 - Hall

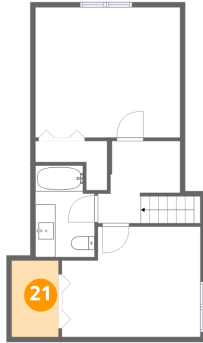


Max Dimensions: 6'11" x 8'2"
Calculated Area: 64 sq. ft
Included: Yes

Heated: Yes
Finished: Yes
Enclosed: Yes
Contiguous: Yes
Permitted: Yes
Wet space: No
Addition: No
Conversion: No

125 Woodlake Drive, North Shore, Moneta, Franklin County, Virginia, United States, 24121

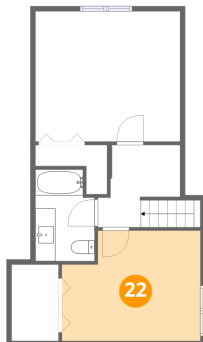
21 Floor 3 - W.I.C.



Max Dimensions: 4'8" x 7'7"
Calculated Area: 35 sq. ft
Included: Yes

Heated: Yes
Finished: Yes
Enclosed: Yes
Contiguous: Yes
Permitted: Yes
Wet space: No
Addition: No
Conversion: No

22 Floor 3 - Bedroom



Max Dimensions: 13'9" x 10'11"
Calculated Area: 138 sq. ft
Included: Yes

Heated: Yes
Finished: Yes
Enclosed: Yes
Contiguous: Yes
Permitted: Yes
Wet space: No
Addition: No
Conversion: No

23 Floor 3 - Bedroom



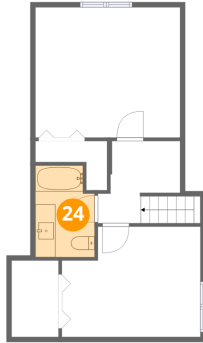
Max Dimensions: 14'4" x 12'11"
Calculated Area: 186 sq. ft
Included: Yes

Heated: Yes
Finished: Yes
Enclosed: Yes
Contiguous: Yes
Permitted: Yes
Wet space: No
Addition: No
Conversion: No

Home report

125 Woodlake Drive, North Shore, Moneta, Franklin County,
Virginia, United States, 24121

24 Floor 3 - Bath



Max Dimensions: 5'10" x
9'1"
Calculated Area: 50 sq. ft
Included: Yes

Heated: Yes
Finished: Yes
Enclosed: Yes
Contiguous:
Yes
Permitted: Yes
Wet space: Yes
Addition: No
Conversion: No