

Home data report

1154 Acorn Drive, Moneta, Bedford County, Virginia, United States, 24121



Total Area: 1710 sq. ft

Basement: 346 sq. ft, 1st Floor: 1091 sq. ft, 2nd Floor: 273 sq. ft

Excluded: Room 78 sq. ft, Undefined 12 sq. ft, Utility 87 sq. ft, Embedded window 15 sq. ft, Open to below 348 sq. ft, Low ceiling 105 sq. ft, Walls: 199 sq. ft

Property summary

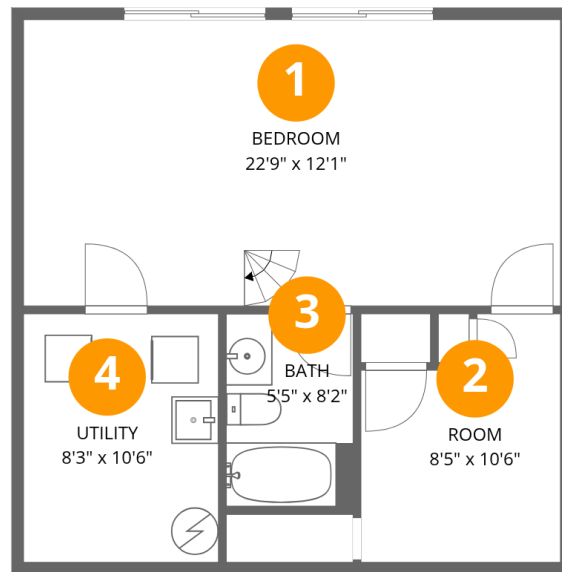
 **3** Floors

 **5** Bedrooms

 **3** Bathrooms

Home data report

1154 Acorn Drive, Moneta, Bedford County, Virginia, United States, 24121



Room dimensions

Floor 1 Below grade

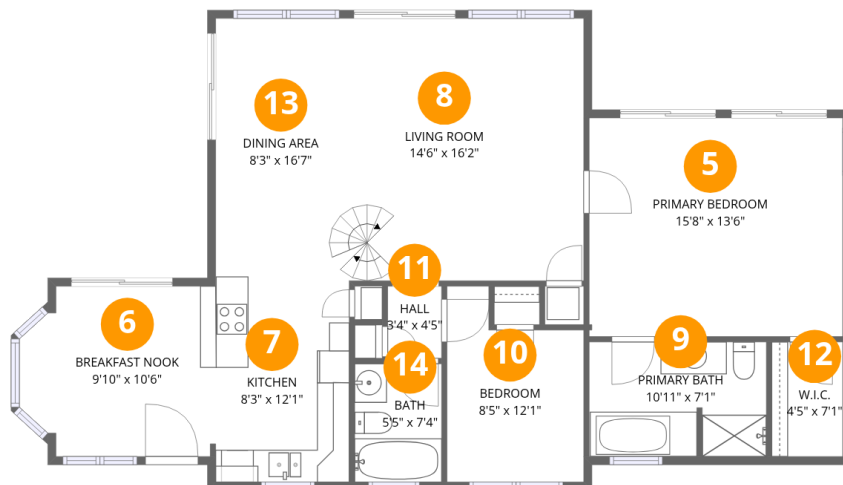
Total:346sqft

Excluded: 177sqft

#		Dimensions	sqft	Counted as living area
1	Bedroom	22'9" x 12'1"	275 sq. ft	Yes
2	Room	8'5" x 10'6"	89 sq. ft	No
3	Bath	5'5" x 8'2"	44 sq. ft	Yes
4	Utility	8'3" x 10'6"	87 sq. ft	No

Home data report

1154 Acorn Drive, Moneta, Bedford County, Virginia, United States, 24121



Room dimensions

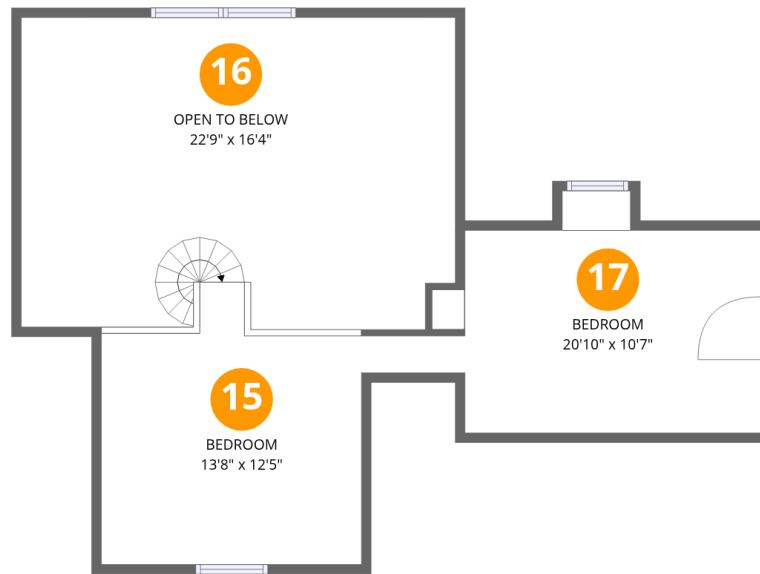
Floor 2

Total:1091sqft Excluded: 15sqft

#		Dimensions	sqft	Counted as living area
5	Primary Bedroom	15'8" x 13'6"	212 sq. ft	Yes
6	Breakfast Nook	9'10" x 10'6"	103 sq. ft	Yes
7	Kitchen	8'3" x 12'1"	100 sq. ft	Yes
8	Living Room	14'6" x 16'2"	235 sq. ft	Yes
9	Primary Bath	10'11" x 7'1"	78 sq. ft	Yes
10	Bedroom	8'5" x 12'1"	102 sq. ft	Yes
11	Hall	3'4" x 4'5"	15 sq. ft	Yes
12	W.I.C.	4'5" x 7'1"	31 sq. ft	Yes
13	Dining Area	8'3" x 16'7"	136 sq. ft	Yes
14	Bath	5'5" x 7'4"	39 sq. ft	Yes

Home data report

1154 Acorn Drive, Moneta, Bedford County, Virginia, United States, 24121



Room dimensions

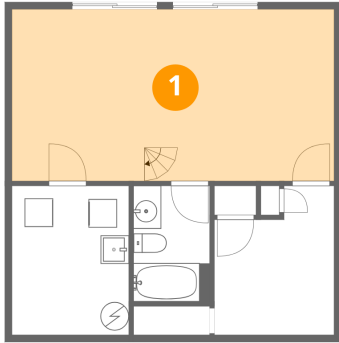
Floor 3

Total:273sqft

Excluded: 453sqft

#		Dimensions	sqft	Counted as living area
15	Bedroom	13'8" x 12'5"	170 sq. ft	Yes
16	Open To Below	22'9" x 16'4"	371 sq. ft	No
17	Bedroom	20'10" x 10'7"	222 sq. ft	Yes

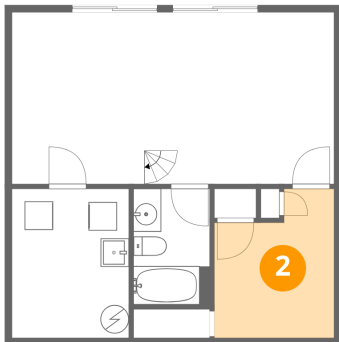
1 Floor 1 - Bedroom



Dimensions: 22'9" x 12'1"
Area: 275 sq. ft
Counted as living area: No

Heated: Yes
Finished: Yes
Enclosed: Yes
Contiguous: No
Permitted: Yes
Wet space: No
Addition: No
Conversion: No

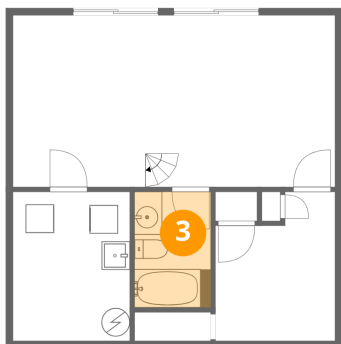
2 Floor 1 - Room



Dimensions: 8'5" x 10'6"
Area: 89 sq. ft
Counted as living area: No

Heated: Yes
Finished: No
Enclosed: Yes
Contiguous: Yes
Permitted: Yes
Wet space: No
Addition: No
Conversion: No

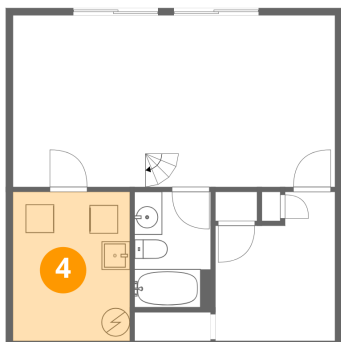
3 Floor 1 - Bath



Dimensions: 5'5" x 8'2"
Area: 44 sq. ft
Counted as living area: No

Heated: Yes
Finished: Yes
Enclosed: Yes
Contiguous: No
Permitted: Yes
Wet space: Yes
Addition: No
Conversion: No

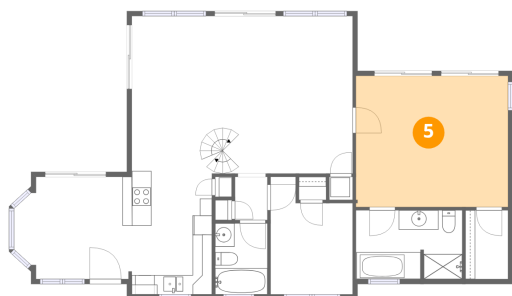
4 Floor 1 - Utility



Dimensions: 8'3" x 10'6"
Area: 87 sq. ft
Counted as living area: No

Heated: Yes
Finished: No
Enclosed: Yes
Contiguous: Yes
Permitted: Yes
Wet space: No
Addition: No
Conversion: No

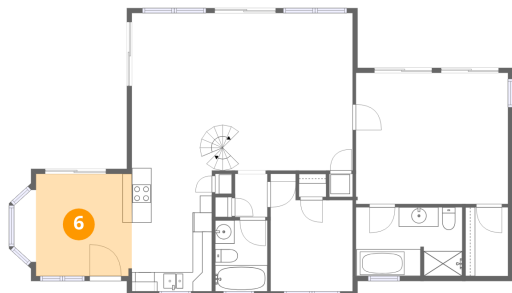
5 Floor 2 - Primary Bedroom



Dimensions: 15'8" x 13'6"
Area: 212 sq. ft
Counted as living area: Yes

Heated: Yes
Finished: Yes
Enclosed: Yes
Contiguous: Yes
Permitted: Yes
Wet space: No
Addition: No
Conversion: No

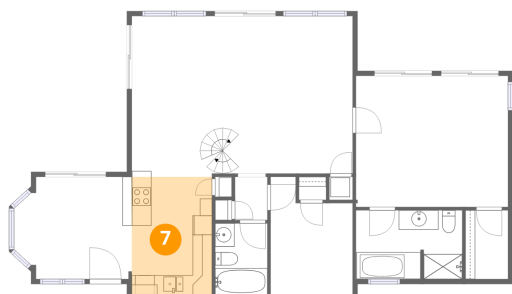
6 Floor 2 - Breakfast Nook



Dimensions: 9'10" x 10'6"
Area: 103 sq. ft
Counted as living area: Yes

Heated: Yes
Finished: Yes
Enclosed: Yes
Contiguous: Yes
Permitted: Yes
Wet space: No
Addition: No
Conversion: No

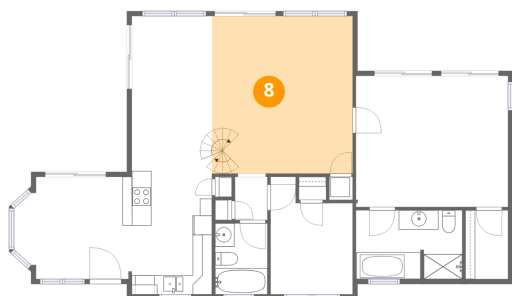
7 Floor 2 - Kitchen



Dimensions: 8'3" x 12'1"
Area: 100 sq. ft
Counted as living area: Yes

Heated: Yes
Finished: Yes
Enclosed: Yes
Contiguous: Yes
Permitted: Yes
Wet space: No
Addition: No
Conversion: No

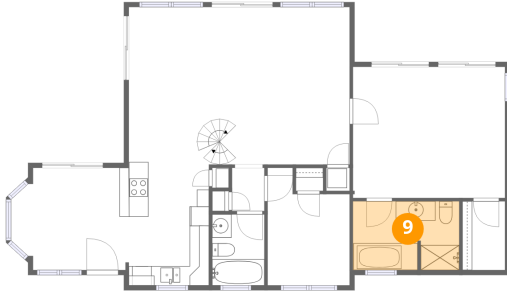
8 Floor 2 - Living Room



Dimensions: 14'6" x 16'2"
Area: 235 sq. ft
Counted as living area: Yes

Heated: Yes
Finished: Yes
Enclosed: Yes
Contiguous: Yes
Permitted: Yes
Wet space: No
Addition: No
Conversion: No

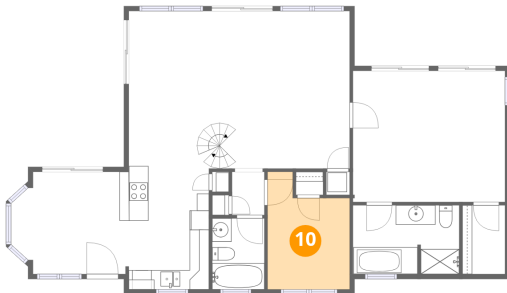
9 Floor 2 - Primary Bath



Dimensions: 10'11" x 7'1"
Area: 78 sq. ft
Counted as living area: Yes

Heated: Yes
Finished: Yes
Enclosed: Yes
Contiguous: Yes
Permitted: Yes
Wet space: Yes
Addition: No
Conversion: No

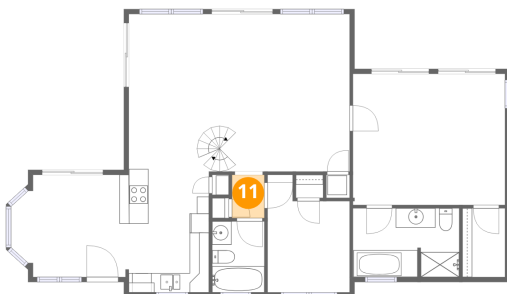
10 Floor 2 - Bedroom



Dimensions: 8'5" x 12'1"
Area: 102 sq. ft
Counted as living area: Yes

Heated: Yes
Finished: Yes
Enclosed: Yes
Contiguous: Yes
Permitted: Yes
Wet space: No
Addition: No
Conversion: No

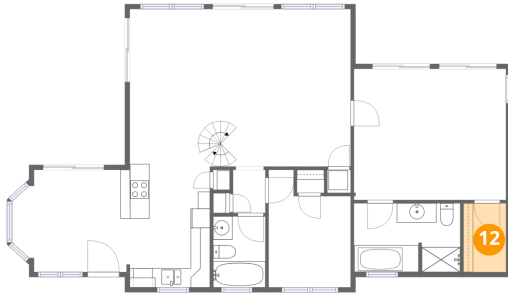
11 Floor 2 - Hall



Dimensions: 3'4" x 4'5"
Area: 15 sq. ft
Counted as living area: Yes

Heated: Yes
Finished: Yes
Enclosed: Yes
Contiguous: Yes
Permitted: Yes
Wet space: No
Addition: No
Conversion: No

12 Floor 2 - W.I.C.



Dimensions: 4'5" x 7'1"
Area: 31 sq. ft
Counted as living area: Yes

Heated: Yes
Finished: Yes
Enclosed: Yes
Contiguous: Yes
Permitted: Yes
Wet space: No
Addition: No
Conversion: No

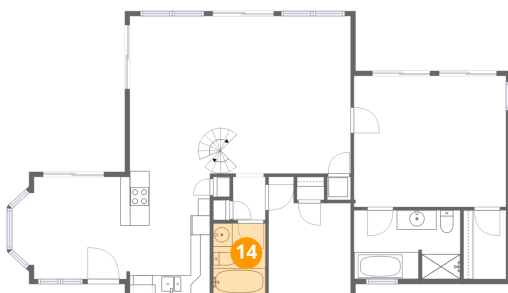
13 Floor 2 - Dining Area



Dimensions: 8'3" x 16'7"
Area: 136 sq. ft
Counted as living area: Yes

Heated: Yes
Finished: Yes
Enclosed: Yes
Contiguous: Yes
Permitted: Yes
Wet space: No
Addition: No
Conversion: No

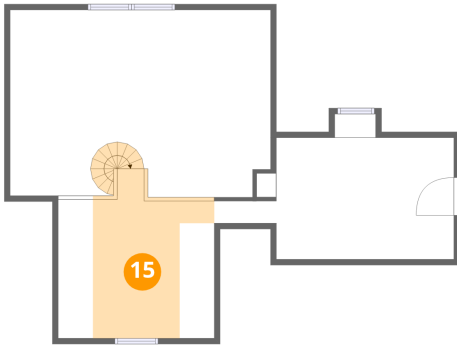
14 Floor 2 - Bath



Dimensions: 5'5" x 7'4"
Area: 39 sq. ft
Counted as living area: Yes

Heated: Yes
Finished: Yes
Enclosed: Yes
Contiguous: Yes
Permitted: Yes
Wet space: Yes
Addition: No
Conversion: No

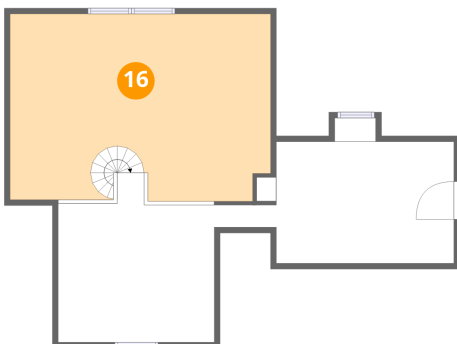
15 Floor 3 - Bedroom



Dimensions: 13'8" x 12'5"
Area: 170 sq. ft
Counted as living area: Yes

Heated: Yes
Finished: Yes
Enclosed: Yes
Contiguous: Yes
Permitted: Yes
Wet space: No
Addition: No
Conversion: No

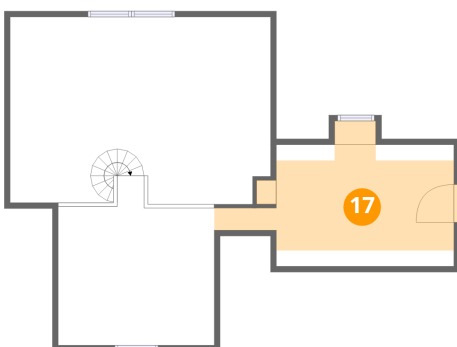
16 Floor 3 - Open To Below



Dimensions: 22'9" x 16'4"
Area: 371 sq. ft
Counted as living area: No

Heated: No
Finished: No
Enclosed: No
Contiguous: Yes
Permitted: No
Wet space: No
Addition: No
Conversion: No

17 Floor 3 - Bedroom



Dimensions: 20'10" x 10'7"
Area: 222 sq. ft
Counted as living area: Yes

Heated: Yes
Finished: Yes
Enclosed: Yes
Contiguous: Yes
Permitted: Yes
Wet space: No
Addition: No
Conversion: No