

Home data report

4718 E Goldstone Dr, Meridian, ID, US

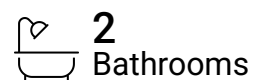


Total Area: 2551 sq. ft

1st Floor: 2551 sq. ft

Excluded: Garage 890 sq. ft, Utility 63 sq. ft, Walls: 178 sq. ft

Property summary



Home data report

4718 E Goldstone Dr, Meridian, ID, US

 **1**
Half baths

 **1**
Garages



Room dimensions

Floor 1

Total: 2551 sqft

Excluded: 953 sqft

#		Dimensions	sqft	Counted as living area
1	Hall	15'5" x 17'3"	266 sq. ft	Yes
2	W.I.C.	4'11" x 4'7"	22 sq. ft	Yes
3	Garage	35'7" x 29'9"	1059 sq. ft	No
4	Bath	6'9" x 3'5"	23 sq. ft	Yes
5	Pantry	6'8" x 9'9"	65 sq. ft	Yes
6	Primary Bath	13'10" x 17'6"	242 sq. ft	Yes
7	Living Room	18'8" x 19'6"	364 sq. ft	Yes
8	Foyer	8'0" x 16'6"	133 sq. ft	Yes
9	W.I.C.	13'10" x 7'8"	106 sq. ft	Yes
10	Bath	7'4" x 9'0"	66 sq. ft	Yes
11	Dining Area	7'7" x 18'0"	137 sq. ft	Yes

Home data report

4718 E Goldstone Dr,Meridian,ID,US

#		Dimensions	sqft	Counted as living area
12	Bedroom	11'3" x 11'5"	128 sq. ft	Yes
13	Primary Bedroom	18'1" x 21'9"	394 sq. ft	Yes
14	Bath	5'1" x 7'5"	38 sq. ft	Yes
15	Utility	8'5" x 7'6"	63 sq. ft	No
16	Bedroom	11'4" x 10'11"	124 sq. ft	Yes
17	Kitchen	19'5" x 18'3"	353 sq. ft	Yes
18	Laundry	8'5" x 6'11"	58 sq. ft	Yes
19	Bedroom	12'11" x 16'8"	215 sq. ft	Yes
20	W.I.C.	4'7" x 5'3"	24 sq. ft	Yes

1 Floor 1 - Hall



Dimensions: 15'5" x 17'3"
Area: 266 sq. ft
Counted as living area: Yes

Heated: Yes
Finished: Yes
Enclosed: Yes
Contiguous: Yes
Permitted: Yes
Wet space: No
Addition: No
Conversion: No

2 Floor 1 - W.I.C.



Dimensions: 4'11" x 4'7"
Area: 22 sq. ft
Counted as living area: Yes

Heated: Yes
Finished: Yes
Enclosed: Yes
Contiguous: Yes
Permitted: Yes
Wet space: No
Addition: No
Conversion: No

3 Floor 1 - Garage



Dimensions: 35'7" x 29'9"
Area: 1059 sq. ft
Counted as living area: No

Heated: No
Finished: No
Enclosed: Yes
Contiguous: Yes
Permitted: Yes
Wet space: No
Addition: No
Conversion: No

4 Floor 1 - Bath



Dimensions: 6'9" x 3'5"
Area: 23 sq. ft
Counted as living area: Yes

Heated: Yes
Finished: Yes
Enclosed: Yes
Contiguous: Yes
Permitted: Yes
Wet space: Yes
Addition: No
Conversion: No

5 Floor 1 - Pantry



Dimensions: 6'8" x 9'9"
Area: 65 sq. ft
Counted as living area: Yes

Heated: Yes
Finished: Yes
Enclosed: Yes
Contiguous: Yes
Permitted: Yes
Wet space: No
Addition: No
Conversion: No

6 Floor 1 - Primary Bath



Dimensions: 13'10" x 17'6"
Area: 242 sq. ft
Counted as living area: Yes

Heated: Yes
Finished: Yes
Enclosed: Yes
Contiguous: Yes
Permitted: Yes
Wet space: Yes
Addition: No
Conversion: No

7 Floor 1 - Living Room



Dimensions: 18'8" x 19'6"
Area: 364 sq. ft
Counted as living area: Yes

Heated: Yes
Finished: Yes
Enclosed: Yes
Contiguous: Yes
Permitted: Yes
Wet space: No
Addition: No
Conversion: No

8 Floor 1 - Foyer



Dimensions: 8'0" x 16'6"
Area: 133 sq. ft
Counted as living area: Yes

Heated: Yes
Finished: Yes
Enclosed: Yes
Contiguous: Yes
Permitted: Yes
Wet space: No
Addition: No
Conversion: No

9 Floor 1 - W.I.C.



Dimensions: 13'10" x 7'8"
Area: 106 sq. ft
Counted as living area: Yes

Heated: Yes
Finished: Yes
Enclosed: Yes
Contiguous: Yes
Permitted: Yes
Wet space: No
Addition: No
Conversion: No

10 Floor 1 - Bath



Dimensions: 7'4" x 9'0"
Area: 66 sq. ft
Counted as living area: Yes

Heated: Yes
Finished: Yes
Enclosed: Yes
Contiguous: Yes
Permitted: Yes
Wet space: Yes
Addition: No
Conversion: No

11 Floor 1 - Dining Area



Dimensions: 7'7" x 18'0"
Area: 137 sq. ft
Counted as living area: Yes

Heated: Yes
Finished: Yes
Enclosed: Yes
Contiguous: Yes
Permitted: Yes
Wet space: No
Addition: No
Conversion: No

12 Floor 1 - Bedroom



Dimensions: 11'3" x 11'5"
Area: 128 sq. ft
Counted as living area: Yes

Heated: Yes
Finished: Yes
Enclosed: Yes
Contiguous: Yes
Permitted: Yes
Wet space: No
Addition: No
Conversion: No

13 Floor 1 - Primary Bedroom



Dimensions: 18'1" x 21'9"
Area: 394 sq. ft
Counted as living area: Yes

Heated: Yes
Finished: Yes
Enclosed: Yes
Contiguous: Yes
Permitted: Yes
Wet space: No
Addition: No
Conversion: No

14 Floor 1 - Bath



Dimensions: 5'1" x 7'5"
Area: 38 sq. ft
Counted as living area: Yes

Heated: Yes
Finished: Yes
Enclosed: Yes
Contiguous: Yes
Permitted: Yes
Wet space: Yes
Addition: No
Conversion: No

15 Floor 1 - Utility



Dimensions: 8'5" x 7'6"
Area: 63 sq. ft
Counted as living area: No

Heated: Yes
Finished: No
Enclosed: Yes
Contiguous: Yes
Permitted: Yes
Wet space: No
Addition: No
Conversion: No

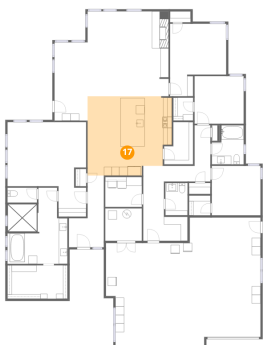
16 Floor 1 - Bedroom



Dimensions: 11'4" x 10'11"
Area: 124 sq. ft
Counted as living area: Yes

Heated: Yes
Finished: Yes
Enclosed: Yes
Contiguous: Yes
Permitted: Yes
Wet space: No
Addition: No
Conversion: No

17 Floor 1 - Kitchen



Dimensions: 19'5" x 18'3"
Area: 353 sq. ft
Counted as living area: Yes

Heated: Yes
Finished: Yes
Enclosed: Yes
Contiguous: Yes
Permitted: Yes
Wet space: No
Addition: No
Conversion: No

18 Floor 1 - Laundry



Dimensions: 8'5" x 6'11"
Area: 58 sq. ft
Counted as living area: Yes

Heated: Yes
Finished: Yes
Enclosed: Yes
Contiguous: Yes
Permitted: Yes
Wet space: No
Addition: No
Conversion: No

19 Floor 1 - Bedroom



Dimensions: 12'11" x 16'8"
Area: 215 sq. ft
Counted as living area: Yes

Heated: Yes
Finished: Yes
Enclosed: Yes
Contiguous: Yes
Permitted: Yes
Wet space: No
Addition: No
Conversion: No

20 Floor 1 - W.I.C.



Dimensions: 4'7" x 5'3"
Area: 24 sq. ft
Counted as living area: Yes

Heated: Yes
Finished: Yes
Enclosed: Yes
Contiguous: Yes
Permitted: Yes
Wet space: No
Addition: No
Conversion: No