



## Total Area: 1419 sq. ft

1st Floor: 650 sq. ft, 2nd Floor: 769 sq. ft

Excluded: Undefined 17 sq. ft, Garage 418 sq. ft, Porch 62 sq. ft, Covered patio 115 sq. ft, Walls: 122 sq. ft

## Property summary

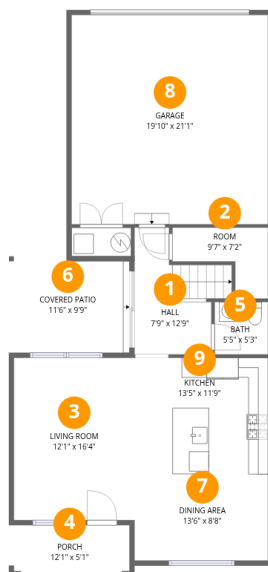


Home data report

# 5003 Wheeler Ln, Santa Fe, NM, US

 **1**  
Half baths

 **1**  
Garages



## Room dimensions

Floor 1

Total:650sqft Excluded: 612sqft

#		Dimensions	sqft	Counted as living area
1	Hall	7'9" x 12'9"	98 sq. ft	Yes
2	Room	9'7" x 7'2"	69 sq. ft	Yes
3	Living Room	12'1" x 16'4"	198 sq. ft	Yes
4	Porch	12'1" x 5'1"	62 sq. ft	No
5	Bath	5'5" x 5'3"	28 sq. ft	Yes
6	Covered Patio	11'6" x 9'9"	111 sq. ft	No
7	Dining Area	13'6" x 8'8"	117 sq. ft	Yes
8	Garage	19'10" x 21'1"	418 sq. ft	No
9	Kitchen	13'5" x 11'9"	157 sq. ft	Yes



## Room dimensions

Floor 2

Total: 769 sqft

Excluded: 0 sqft

#		Dimensions	sqft	Counted as living area
10	W.I.C.	4'9" x 8'9"	42 sq. ft	Yes
11	Primary Bedroom	13'6" x 14'1"	189 sq. ft	Yes
12	Bath	10'2" x 5'1"	52 sq. ft	Yes
13	Bedroom	11'10" x 10'0"	118 sq. ft	Yes
14	Bedroom	11'10" x 9'9"	115 sq. ft	Yes
15	Laundry	3'4" x 5'8"	19 sq. ft	Yes
16	Bath	5'1" x 8'9"	44 sq. ft	Yes
17	Hall	6'9" x 19'2"	130 sq. ft	Yes

## 1 Floor 1 - Hall



Dimensions: 7'9" x 12'9"  
Area: 98 sq. ft  
Counted as living area: Yes

Heated: Yes  
Finished: Yes  
Enclosed: Yes  
Contiguous: Yes  
Permitted: Yes  
Wet space: No  
Addition: No  
Conversion: No

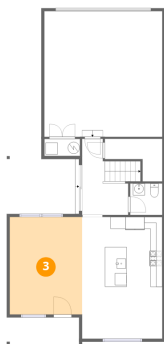
## 2 Floor 1 - Room



Dimensions: 9'7" x 7'2"  
Area: 69 sq. ft  
Counted as living area: Yes

Heated: Yes  
Finished: Yes  
Enclosed: Yes  
Contiguous: Yes  
Permitted: Yes  
Wet space: No  
Addition: No  
Conversion: No

### 3 Floor 1 - Living Room



Dimensions: 12'1" x 16'4"  
Area: 198 sq. ft  
Counted as living area: Yes

Heated: Yes  
Finished: Yes  
Enclosed: Yes  
Contiguous: Yes  
Permitted: Yes  
Wet space: No  
Addition: No  
Conversion: No

### 4 Floor 1 - Porch



Dimensions: 12'1" x 5'1"  
Area: 62 sq. ft  
Counted as living area: No

Heated: No  
Finished: No  
Enclosed: No  
Contiguous: Yes  
Permitted: Yes  
Wet space: No  
Addition: No  
Conversion: No

### 5 Floor 1 - Bath



Dimensions: 5'5" x 5'3"  
Area: 28 sq. ft  
Counted as living area: Yes

Heated: Yes  
Finished: Yes  
Enclosed: Yes  
Contiguous: Yes  
Permitted: Yes  
Wet space: Yes  
Addition: No  
Conversion: No

### 6 Floor 1 - Covered Patio



Dimensions: 11'6" x 9'9"  
Area: 111 sq. ft  
Counted as living area: No

Heated: No  
Finished: No  
Enclosed: No  
Contiguous: Yes  
Permitted: Yes  
Wet space: No  
Addition: No  
Conversion: No

### 7 Floor 1 - Dining Area



Dimensions: 13'6" x 8'8"  
Area: 117 sq. ft  
Counted as living area: Yes

Heated: Yes  
Finished: Yes  
Enclosed: Yes  
Contiguous: Yes  
Permitted: Yes  
Wet space: No  
Addition: No  
Conversion: No

### 8 Floor 1 - Garage



Dimensions: 19'10" x 21'1"  
Area: 418 sq. ft  
Counted as living area: No

Heated: No  
Finished: No  
Enclosed: Yes  
Contiguous: Yes  
Permitted: Yes  
Wet space: No  
Addition: No  
Conversion: No

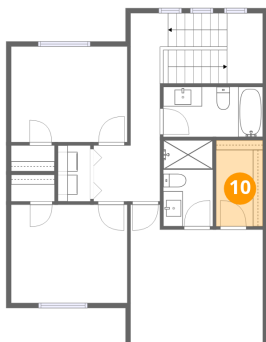
### 9 Floor 1 - Kitchen



Dimensions: 13'5" x 11'9"  
Area: 157 sq. ft  
Counted as living area: Yes

Heated: Yes  
Finished: Yes  
Enclosed: Yes  
Contiguous: Yes  
Permitted: Yes  
Wet space: No  
Addition: No  
Conversion: No

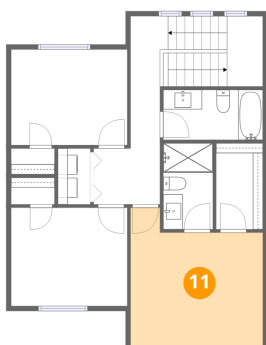
### 10 Floor 2 - W.I.C.



Dimensions: 4'9" x 8'9"  
Area: 42 sq. ft  
Counted as living area: Yes

Heated: Yes  
Finished: Yes  
Enclosed: Yes  
Contiguous: Yes  
Permitted: Yes  
Wet space: No  
Addition: No  
Conversion: No

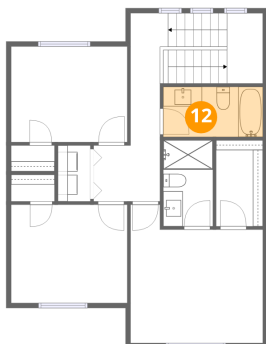
### 11 Floor 2 - Primary Bedroom



Dimensions: 13'6" x 14'1"  
Area: 189 sq. ft  
Counted as living area: Yes

Heated: Yes  
Finished: Yes  
Enclosed: Yes  
Contiguous: Yes  
Permitted: Yes  
Wet space: No  
Addition: No  
Conversion: No

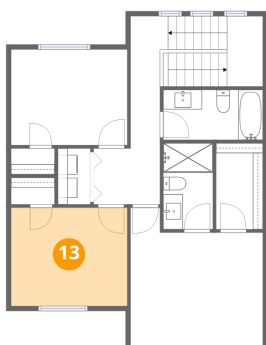
## 12 Floor 2 - Bath



Dimensions: 10'2" x 5'1"  
Area: 52 sq. ft  
Counted as living area: Yes

Heated: Yes  
Finished: Yes  
Enclosed: Yes  
Contiguous: Yes  
Permitted: Yes  
Wet space: Yes  
Addition: No  
Conversion: No

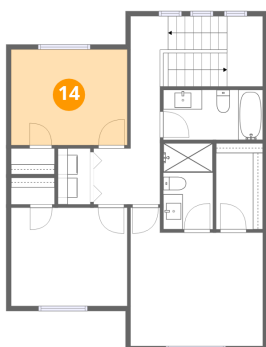
## 13 Floor 2 - Bedroom



Dimensions: 11'10" x 10'0"  
Area: 118 sq. ft  
Counted as living area: Yes

Heated: Yes  
Finished: Yes  
Enclosed: Yes  
Contiguous: Yes  
Permitted: Yes  
Wet space: No  
Addition: No  
Conversion: No

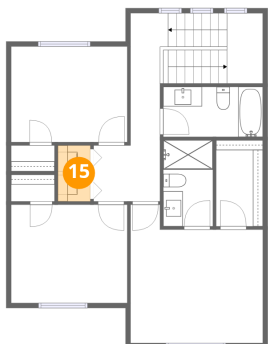
## 14 Floor 2 - Bedroom



Dimensions: 11'10" x 9'9"  
Area: 115 sq. ft  
Counted as living area: Yes

Heated: Yes  
Finished: Yes  
Enclosed: Yes  
Contiguous: Yes  
Permitted: Yes  
Wet space: No  
Addition: No  
Conversion: No

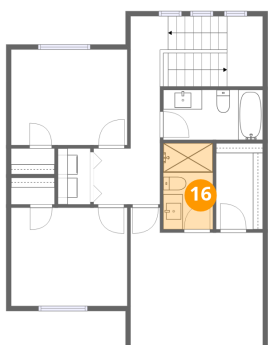
### 15 Floor 2 - Laundry



Dimensions: 3'4" x 5'8"  
Area: 19 sq. ft  
Counted as living area: Yes

Heated: Yes  
Finished: Yes  
Enclosed: Yes  
Contiguous: Yes  
Permitted: Yes  
Wet space: No  
Addition: No  
Conversion: No

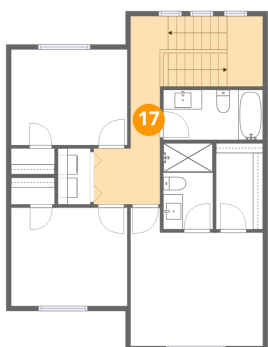
### 16 Floor 2 - Bath



Dimensions: 5'1" x 8'9"  
Area: 44 sq. ft  
Counted as living area: Yes

Heated: Yes  
Finished: Yes  
Enclosed: Yes  
Contiguous: Yes  
Permitted: Yes  
Wet space: Yes  
Addition: No  
Conversion: No

### 17 Floor 2 - Hall



Dimensions: 6'9" x 19'2"  
Area: 130 sq. ft  
Counted as living area: Yes

Heated: Yes  
Finished: Yes  
Enclosed: Yes  
Contiguous: Yes  
Permitted: Yes  
Wet space: No  
Addition: No  
Conversion: No