

# Home data report

## 1212 SW Cottonwood St, Grants Pass, OR, US



**Total Area: 1347 sq. ft**

1st Floor: 1347 sq. ft

Excluded: Garage 377 sq. ft, Porch 50 sq. ft, Walls: 116 sq. ft

### Property summary

 **1** Floors

 **3** Bedrooms

 **2** Bathrooms

 **1** Garages

# Home data report

## 1212 SW Cottonwood St, Grants Pass, OR, US



## Room dimensions

Floor 1

Total: 1347sqft Excluded: 427sqft

#		Dimensions	sqft	Counted as living area
1	Dining Area	10'6" x 13'5"	138 sq. ft	Yes
2	Kitchen	9'2" x 15'9"	126 sq. ft	Yes
3	Bedroom	9'3" x 12'1"	112 sq. ft	Yes
4	Bath	9'3" x 5'8"	53 sq. ft	Yes
5	W.I.C.	9'3" x 4'10"	45 sq. ft	Yes
6	Laundry	2'0" x 5'1"	10 sq. ft	Yes
7	Bedroom	10'6" x 12'1"	126 sq. ft	Yes
8	Primary Bedroom	13'7" x 11'3"	154 sq. ft	Yes
9	Living Room	26'6" x 13'9"	324 sq. ft	Yes
10	Bath	9'3" x 6'1"	55 sq. ft	Yes
11	Foyer	4'6" x 8'9"	40 sq. ft	Yes

Home data report

**1212 SW Cottonwood St, Grants Pass, OR, US**

#		Dimensions	sqft	Counted as living area
12	Hall	13'11" x 11'8"	67 sq. ft	Yes
13	Garage	19'8" x 21'2"	377 sq. ft	No
14	Porch	4'2" x 11'11"	50 sq. ft	No

## 1 Floor 1 - Dining Area



Dimensions: 10'6" x 13'5"  
Area: 138 sq. ft  
Counted as living area: Yes

Heated: Yes  
Finished: Yes  
Enclosed: Yes  
Contiguous: Yes  
Permitted: Yes  
Wet space: No  
Addition: No  
Conversion: No

## 2 Floor 1 - Kitchen



Dimensions: 9'2" x 15'9"  
Area: 126 sq. ft  
Counted as living area: Yes

Heated: Yes  
Finished: Yes  
Enclosed: Yes  
Contiguous: Yes  
Permitted: Yes  
Wet space: No  
Addition: No  
Conversion: No

### 3 Floor 1 - Bedroom



Dimensions: 9'3" x 12'1"  
Area: 112 sq. ft  
Counted as living area: Yes

Heated: Yes  
Finished: Yes  
Enclosed: Yes  
Contiguous: Yes  
Permitted: Yes  
Wet space: No  
Addition: No  
Conversion: No

### 4 Floor 1 - Bath



Dimensions: 9'3" x 5'8"  
Area: 53 sq. ft  
Counted as living area: Yes

Heated: Yes  
Finished: Yes  
Enclosed: Yes  
Contiguous: Yes  
Permitted: Yes  
Wet space: Yes  
Addition: No  
Conversion: No

### 5 Floor 1 - W.I.C.



Dimensions: 9'3" x 4'10"  
Area: 45 sq. ft  
Counted as living area: Yes

Heated: Yes  
Finished: Yes  
Enclosed: Yes  
Contiguous: Yes  
Permitted: Yes  
Wet space: No  
Addition: No  
Conversion: No

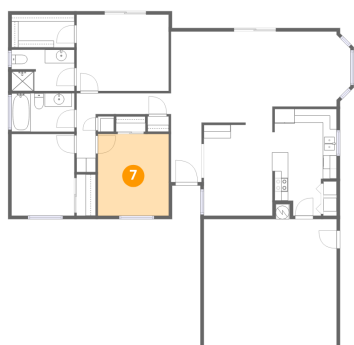
### 6 Floor 1 - Laundry



Dimensions: 2'0" x 5'1"  
Area: 10 sq. ft  
Counted as living area: Yes

Heated: Yes  
Finished: Yes  
Enclosed: Yes  
Contiguous: Yes  
Permitted: Yes  
Wet space: No  
Addition: No  
Conversion: No

### 7 Floor 1 - Bedroom



Dimensions: 10'6" x 12'1"  
Area: 126 sq. ft  
Counted as living area: Yes

Heated: Yes  
Finished: Yes  
Enclosed: Yes  
Contiguous: Yes  
Permitted: Yes  
Wet space: No  
Addition: No  
Conversion: No

### 8 Floor 1 - Primary Bedroom



Dimensions: 13'7" x 11'3"  
Area: 154 sq. ft  
Counted as living area: Yes

Heated: Yes  
Finished: Yes  
Enclosed: Yes  
Contiguous: Yes  
Permitted: Yes  
Wet space: No  
Addition: No  
Conversion: No

## 9 Floor 1 - Living Room



Dimensions: 26'6" x 13'9"  
Area: 324 sq. ft  
Counted as living area: Yes

Heated: Yes  
Finished: Yes  
Enclosed: Yes  
Contiguous: Yes  
Permitted: Yes  
Wet space: No  
Addition: No  
Conversion: No

## 10 Floor 1 - Bath



Dimensions: 9'3" x 6'1"  
Area: 55 sq. ft  
Counted as living area: Yes

Heated: Yes  
Finished: Yes  
Enclosed: Yes  
Contiguous: Yes  
Permitted: Yes  
Wet space: Yes  
Addition: No  
Conversion: No

## 11 Floor 1 - Foyer



Dimensions: 4'6" x 8'9"  
Area: 40 sq. ft  
Counted as living area: Yes

Heated: Yes  
Finished: Yes  
Enclosed: Yes  
Contiguous: Yes  
Permitted: Yes  
Wet space: No  
Addition: No  
Conversion: No

### 12 Floor 1 - Hall



Dimensions: 13'11" x 11'8"  
Area: 67 sq. ft  
Counted as living area: Yes

Heated: Yes  
Finished: Yes  
Enclosed: Yes  
Contiguous: Yes  
Permitted: Yes  
Wet space: No  
Addition: No  
Conversion: No

### 13 Floor 1 - Garage



Dimensions: 19'8" x 21'2"  
Area: 377 sq. ft  
Counted as living area: No

Heated: No  
Finished: No  
Enclosed: Yes  
Contiguous: Yes  
Permitted: Yes  
Wet space: No  
Addition: No  
Conversion: No

### 14 Floor 1 - Porch



Dimensions: 4'2" x 11'11"  
Area: 50 sq. ft  
Counted as living area: No

Heated: No  
Finished: No  
Enclosed: No  
Contiguous: Yes  
Permitted: Yes  
Wet space: No  
Addition: No  
Conversion: No