

Home data report

2883 S Locust St, Denver, CO, US



Total Area: 1471 sq. ft

1st Floor: 61 sq. ft, 2nd Floor: 705 sq. ft, 3rd Floor: 705 sq. ft

Excluded: Garage 580 sq. ft, Patio 109 sq. ft, Walls: 176 sq. ft

Property summary


 **3** Floors

 **3** Bedrooms

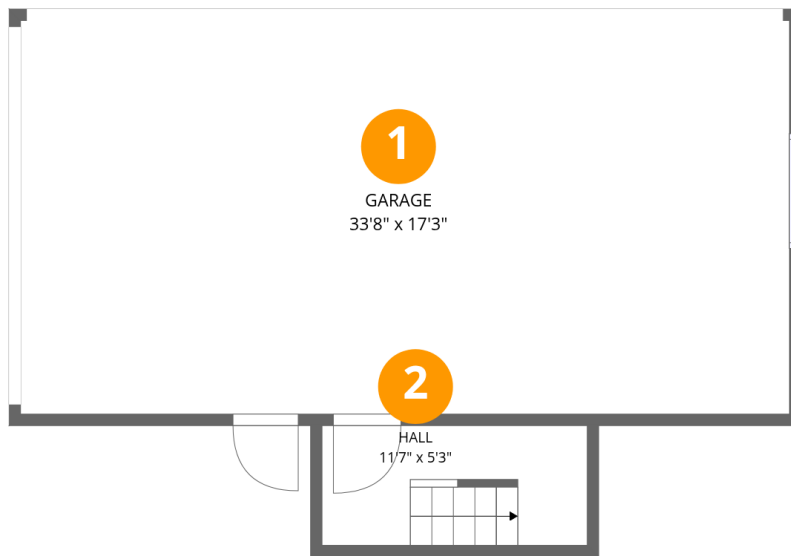
 **2** Bathrooms

Home data report

2883 S Locust St, Denver, CO, US

 **1**
Half baths

 **1**
Garages



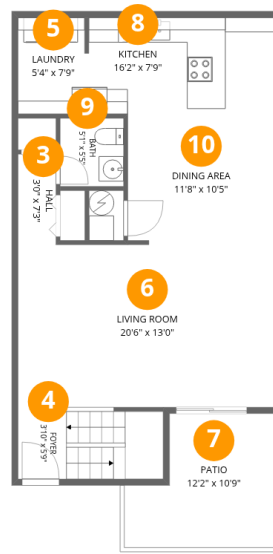
Room dimensions

Floor 1

Total: 61 sqft

Excluded: 580 sqft

#		Dimensions	sqft	Counted as living area
1	Garage	33'8" x 17'3"	580 sq. ft	No
2	Hall	11'7" x 5'3"	61 sq. ft	Yes



Room dimensions

Floor 2

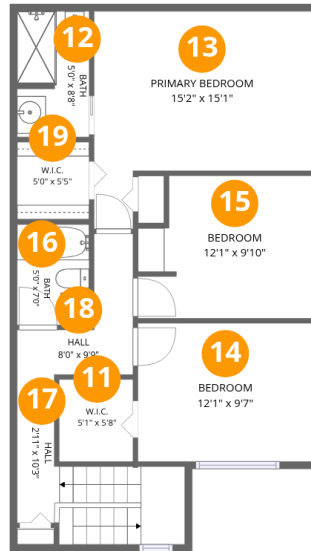
Total: 705 sqft

Excluded: 109 sqft

#		Dimensions	sqft	Counted as living area
3	Hall	3'0" x 7'3"	22 sq. ft	Yes
4	Foyer	3'10" x 5'9"	65 sq. ft	Yes
5	Laundry	5'4" x 7'9"	39 sq. ft	Yes
6	Living Room	20'6" x 13'0"	266 sq. ft	Yes
7	Patio	12'2" x 10'9"	109 sq. ft	No
8	Kitchen	16'2" x 7'9"	118 sq. ft	Yes
9	Bath	5'1" x 5'5"	28 sq. ft	Yes
10	Dining Area	11'8" x 10'5"	122 sq. ft	Yes

Home data report

2883 S Locust St, Denver, CO, US



Room dimensions

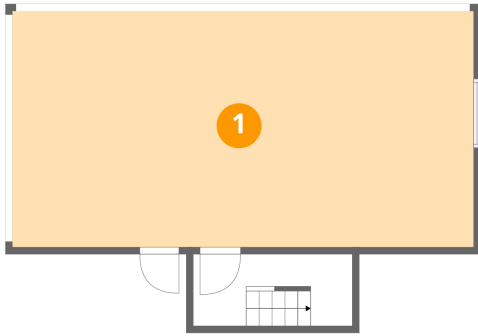
Floor 3

Total: 705 sqft

Excluded: 0 sqft

#		Dimensions	sqft	Counted as living area
11	W.I.C.	5'1" x 5'8"	29 sq. ft	Yes
12	Bath	5'0" x 8'8"	43 sq. ft	Yes
13	Primary Bedroom	15'2" x 15'1"	178 sq. ft	Yes
14	Bedroom	12'1" x 9'7"	116 sq. ft	Yes
15	Bedroom	12'1" x 9'10"	111 sq. ft	Yes
16	Bath	5'0" x 7'0"	35 sq. ft	Yes
17	Hall	2'11" x 10'3"	75 sq. ft	Yes
18	Hall	8'0" x 9'9"	43 sq. ft	Yes
19	W.I.C.	5'0" x 5'5"	27 sq. ft	Yes

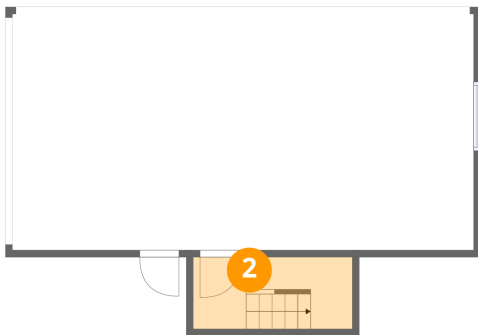
1 Floor 1 - Garage



Dimensions: 33'8" x 17'3"
Area: 580 sq. ft
Counted as living area: No

Heated: No
Finished: No
Enclosed: Yes
Contiguous: Yes
Permitted: Yes
Wet space: No
Addition: No
Conversion: No

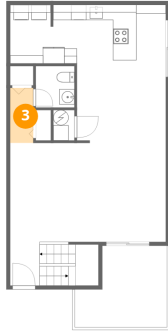
2 Floor 1 - Hall



Dimensions: 11'7" x 5'3"
Area: 61 sq. ft
Counted as living area: Yes

Heated: Yes
Finished: Yes
Enclosed: Yes
Contiguous: Yes
Permitted: Yes
Wet space: No
Addition: No
Conversion: No

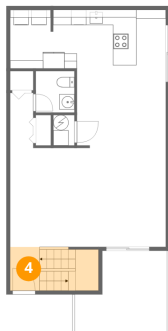
3 Floor 2 - Hall



Dimensions: 3'0" x 7'3"
Area: 22 sq. ft
Counted as living area: Yes

Heated: Yes
Finished: Yes
Enclosed: Yes
Contiguous: Yes
Permitted: Yes
Wet space: No
Addition: No
Conversion: No

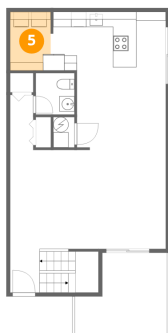
4 Floor 2 - Foyer



Dimensions: 3'10" x 5'9"
Area: 65 sq. ft
Counted as living area: Yes

Heated: Yes
Finished: Yes
Enclosed: Yes
Contiguous: Yes
Permitted: Yes
Wet space: No
Addition: No
Conversion: No

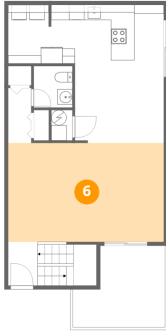
5 Floor 2 - Laundry



Dimensions: 5'4" x 7'9"
Area: 39 sq. ft
Counted as living area: Yes

Heated: Yes
Finished: Yes
Enclosed: Yes
Contiguous: Yes
Permitted: Yes
Wet space: No
Addition: No
Conversion: No

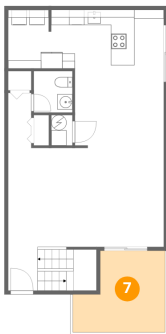
6 Floor 2 - Living Room



Dimensions: 20'6" x 13'0"
Area: 266 sq. ft
Counted as living area: Yes

Heated: Yes
Finished: Yes
Enclosed: Yes
Contiguous: Yes
Permitted: Yes
Wet space: No
Addition: No
Conversion: No

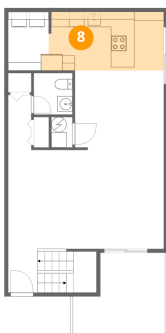
7 Floor 2 - Patio



Dimensions: 12'2" x 10'9"
Area: 109 sq. ft
Counted as living area: No

Heated: No
Finished: No
Enclosed: No
Contiguous: Yes
Permitted: Yes
Wet space: No
Addition: No
Conversion: No

8 Floor 2 - Kitchen



Dimensions: 16'2" x 7'9"
Area: 118 sq. ft
Counted as living area: Yes

Heated: Yes
Finished: Yes
Enclosed: Yes
Contiguous: Yes
Permitted: Yes
Wet space: No
Addition: No
Conversion: No

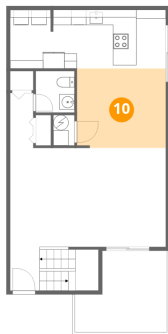
9 Floor 2 - Bath



Dimensions: 5'1" x 5'5"
Area: 28 sq. ft
Counted as living area: Yes

Heated: Yes
Finished: Yes
Enclosed: Yes
Contiguous: Yes
Permitted: Yes
Wet space: Yes
Addition: No
Conversion: No

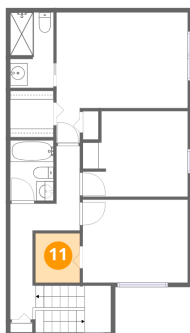
10 Floor 2 - Dining Area



Dimensions: 11'8" x 10'5"
Area: 122 sq. ft
Counted as living area: Yes

Heated: Yes
Finished: Yes
Enclosed: Yes
Contiguous: Yes
Permitted: Yes
Wet space: No
Addition: No
Conversion: No

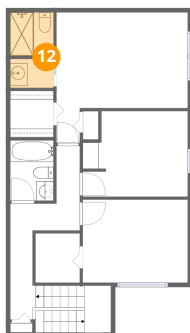
11 Floor 3 - W.I.C.



Dimensions: 5'1" x 5'8"
Area: 29 sq. ft
Counted as living area: Yes

Heated: Yes
Finished: Yes
Enclosed: Yes
Contiguous: Yes
Permitted: Yes
Wet space: No
Addition: No
Conversion: No

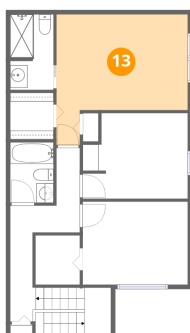
12 Floor 3 - Bath



Dimensions: 5'0" x 8'8"
Area: 43 sq. ft
Counted as living area: Yes

Heated: Yes
Finished: Yes
Enclosed: Yes
Contiguous: Yes
Permitted: Yes
Wet space: Yes
Addition: No
Conversion: No

13 Floor 3 - Primary Bedroom



Dimensions: 15'2" x 15'1"
Area: 178 sq. ft
Counted as living area: Yes

Heated: Yes
Finished: Yes
Enclosed: Yes
Contiguous: Yes
Permitted: Yes
Wet space: No
Addition: No
Conversion: No

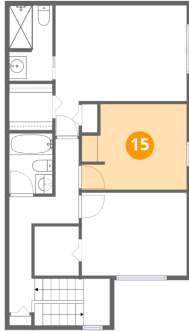
14 Floor 3 - Bedroom



Dimensions: 12'1" x 9'7"
Area: 116 sq. ft
Counted as living area: Yes

Heated: Yes
Finished: Yes
Enclosed: Yes
Contiguous: Yes
Permitted: Yes
Wet space: No
Addition: No
Conversion: No

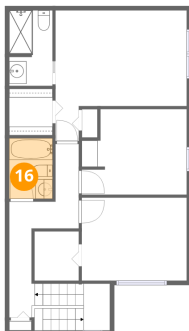
15 Floor 3 - Bedroom



Dimensions: 12'1" x 9'10"
Area: 111 sq. ft
Counted as living area: Yes

Heated: Yes
Finished: Yes
Enclosed: Yes
Contiguous: Yes
Permitted: Yes
Wet space: No
Addition: No
Conversion: No

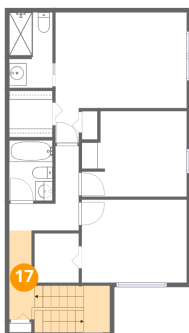
16 Floor 3 - Bath



Dimensions: 5'0" x 7'0"
Area: 35 sq. ft
Counted as living area: Yes

Heated: Yes
Finished: Yes
Enclosed: Yes
Contiguous: Yes
Permitted: Yes
Wet space: Yes
Addition: No
Conversion: No

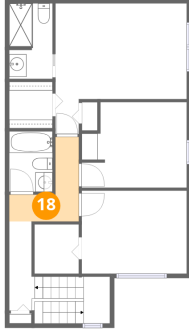
17 Floor 3 - Hall



Dimensions: 2'11" x 10'3"
Area: 75 sq. ft
Counted as living area: Yes

Heated: Yes
Finished: Yes
Enclosed: Yes
Contiguous: Yes
Permitted: Yes
Wet space: No
Addition: No
Conversion: No

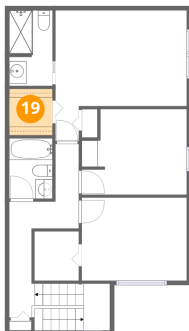
18 Floor 3 - Hall



Dimensions: 8'0" x 9'9"
Area: 43 sq. ft
Counted as living area: Yes

Heated: Yes
Finished: Yes
Enclosed: Yes
Contiguous: Yes
Permitted: Yes
Wet space: No
Addition: No
Conversion: No

19 Floor 3 - W.I.C.



Dimensions: 5'0" x 5'5"
Area: 27 sq. ft
Counted as living area: Yes

Heated: Yes
Finished: Yes
Enclosed: Yes
Contiguous: Yes
Permitted: Yes
Wet space: No
Addition: No
Conversion: No