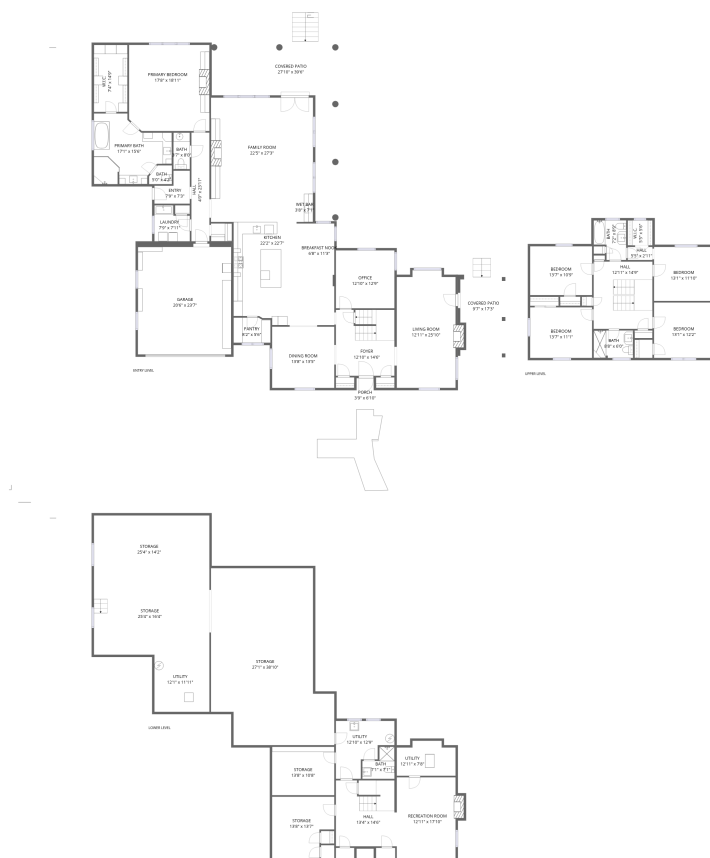


## Home data report

**2230 Sewell Lane Southwest, Raleigh Court, Roanoke, Roanoke city, Virginia, United States, 24015**



**Total Area: 4596 sq. ft**

1st Floor: 521 sq. ft, 2nd Floor: 3016 sq. ft, 3rd Floor: 1059 sq. ft

Excluded: Storage 1998 sq. ft, Utility 363 sq. ft, Undefined 9 sq. ft, Fireplace 22 sq. ft, Garage 499 sq. ft, Covered patio 673 sq. ft, Porch 26 sq. ft, Walls: 411 sq. ft

## Property summary


 **3** Floors

 **5** Bedrooms

 **4** Bathrooms

Home data report

**2230 Sewell Lane Southwest, Raleigh Court, Roanoke, Roanoke city, Virginia, United States, 24015**

 **1**  
Half baths

 **1**  
Garages

# Home data report

## 2230 Sewell Lane Southwest, Raleigh Court, Roanoke, Roanoke city, Virginia, United States, 24015



### Room dimensions

Floor 1

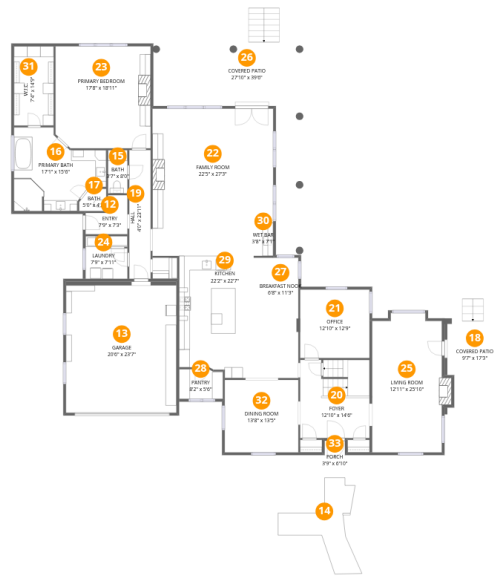
Total:521sqft

Excluded: 2381sqft

#		Dimensions	sqft	Counted as living area
1	Storage	25'4" x 14'2"	360 sq. ft	No
2	Bath	7'1" x 7'1"	38 sq. ft	Yes
3	Storage	13'8" x 13'7"	164 sq. ft	No
4	Storage	13'8" x 10'8"	145 sq. ft	No
5	Storage	27'1" x 38'10"	888 sq. ft	No
6	Storage	25'4" x 16'4"	416 sq. ft	No
7	Hall	13'4" x 14'6"	187 sq. ft	Yes
8	Utility	12'1" x 11'11"	152 sq. ft	No
9	Utility	12'11" x 7'8"	90 sq. ft	No
10	Recreation Room	12'11" x 17'10"	239 sq. ft	Yes
11	Utility	12'10" x 12'9"	121 sq. ft	No

## Home data report

2230 Sewell Lane Southwest, Raleigh Court, Roanoke, Roanoke city, Virginia, United States, 24015



## Room dimensions

Floor 2

Total:3016sqft

Excluded: 1209sqft

#		Dimensions	sqft	Counted as living area
12	Entry	7'9" x 7'3"	43 sq. ft	Yes
13	Garage	20'6" x 23'7"	499 sq. ft	No
14	Walkway	13'5" x 17'10"	116 sq. ft	No
15	Bath	3'7" x 8'0"	29 sq. ft	Yes
16	Primary Bath	17'1" x 15'6"	207 sq. ft	Yes
17	Bath	5'0" x 4'2"	18 sq. ft	Yes
18	Covered Patio	9'7" x 17'3"	179 sq. ft	No
19	Hall	4'0" x 23'11"	95 sq. ft	Yes
20	Foyer	12'10" x 14'6"	184 sq. ft	Yes
21	Office	12'10" x 12'9"	164 sq. ft	Yes
22	Family Room	22'5" x 27'3"	586 sq. ft	Yes

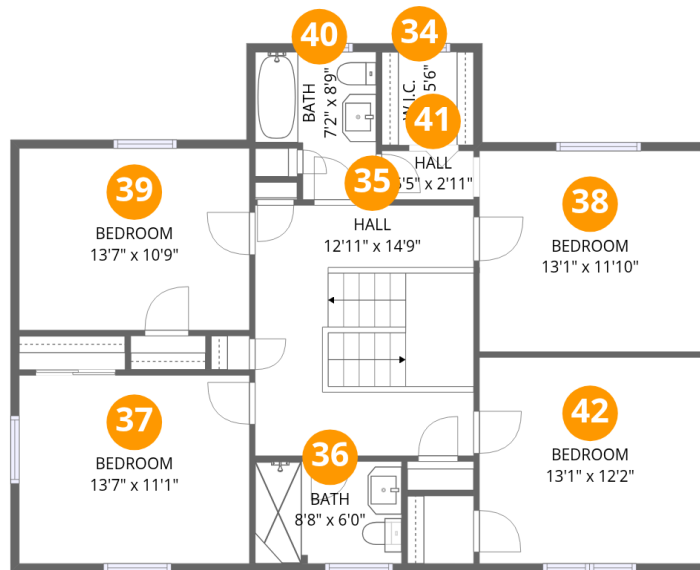
Home data report

**2230 Sewell Lane Southwest, Raleigh Court, Roanoke, Roanoke city, Virginia, United States, 24015**

#		Dimensions	sqft	Counted as living area
23	Primary Bedroom	17'8" x 18'11"	330 sq. ft	Yes
24	Laundry	7'9" x 7'11"	53 sq. ft	Yes
25	Living Room	12'11" x 25'10"	333 sq. ft	Yes
26	Covered Patio	27'10" x 39'6"	494 sq. ft	No
27	Breakfast Nook	6'8" x 11'3"	75 sq. ft	Yes
28	Pantry	8'2" x 5'6"	44 sq. ft	Yes
29	Kitchen	22'2" x 22'7"	408 sq. ft	Yes
30	Wet Bar	3'8" x 7'1"	26 sq. ft	Yes
31	W.I.C.	7'4" x 14'9"	108 sq. ft	Yes
32	Dining Room	13'8" x 13'5"	184 sq. ft	Yes
33	Porch	3'9" x 6'10"	26 sq. ft	No

## Home data report

2230 Sewell Lane Southwest, Raleigh Court, Roanoke, Roanoke city, Virginia, United States, 24015



## Room dimensions

Floor 3

Total:1059sqft

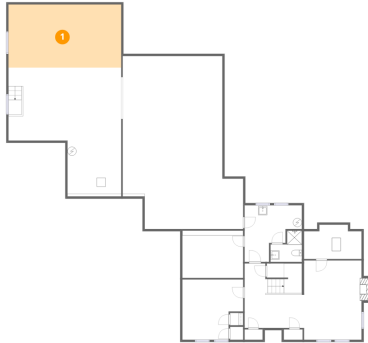
Excluded: 0sqft

#		Dimensions	sqft	Counted as living area
34	W.I.C.	5'5" x 5'6"	30 sq. ft	Yes
35	Hall	12'11" x 14'9"	191 sq. ft	Yes
36	Bath	8'8" x 6'0"	52 sq. ft	Yes
37	Bedroom	13'7" x 11'1"	151 sq. ft	Yes
38	Bedroom	13'1" x 11'10"	155 sq. ft	Yes
39	Bedroom	13'7" x 10'9"	146 sq. ft	Yes
40	Bath	7'2" x 8'9"	53 sq. ft	Yes
41	Hall	5'5" x 2'11"	16 sq. ft	Yes
42	Bedroom	13'1" x 12'2"	159 sq. ft	Yes

2230 Sewell Lane Southwest, Raleigh Court, Roanoke, Roanoke city, Virginia, United States, 24015

**1** Floor 1 - Storage

---

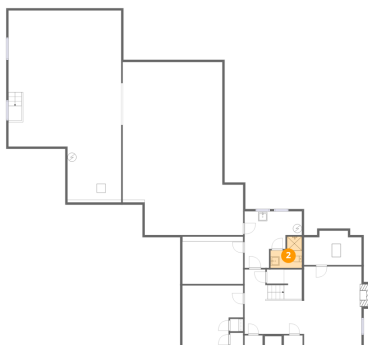


Dimensions: 25'4" x 14'2"  
Area: 360 sq. ft  
Counted as living area: No

Heated: No  
Finished: No  
Enclosed: No  
Contiguous: No  
Permitted: Yes  
Wet space: No  
Addition: No  
Conversion: No

**2** Floor 1 - Bath

---

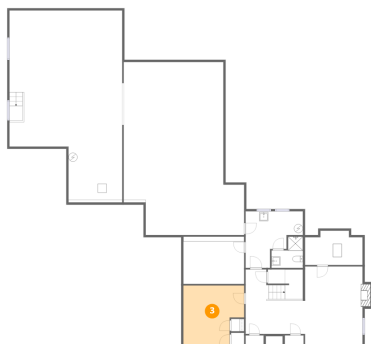


Dimensions: 7'1" x 7'1"  
Area: 38 sq. ft  
Counted as living area: Yes

Heated: Yes  
Finished: Yes  
Enclosed: Yes  
Contiguous: Yes  
Permitted: Yes  
Wet space: Yes  
Addition: No  
Conversion: No

# 2230 Sewell Lane Southwest, Raleigh Court, Roanoke, Roanoke city, Virginia, United States, 24015

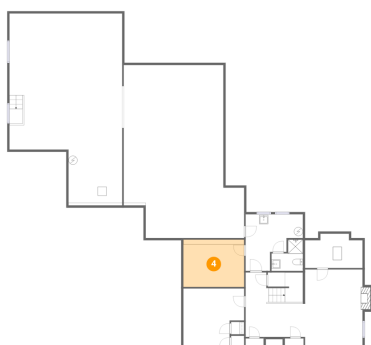
## 3 Floor 1 - Storage



Dimensions: 13'8" x 13'7"  
Area: 164 sq. ft  
Counted as living area: No

Heated: No  
Finished: Yes  
Enclosed: No  
Contiguous: Yes  
Permitted: Yes  
Wet space: No  
Addition: No  
Conversion: No

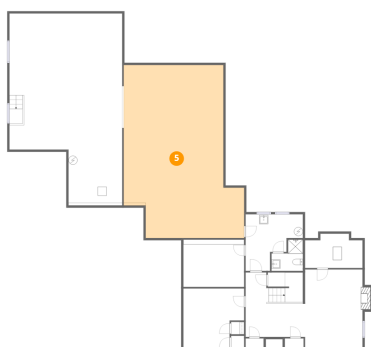
## 4 Floor 1 - Storage



Dimensions: 13'8" x 10'8"  
Area: 145 sq. ft  
Counted as living area: No

Heated: No  
Finished: No  
Enclosed: No  
Contiguous: Yes  
Permitted: Yes  
Wet space: No  
Addition: No  
Conversion: No

## 5 Floor 1 - Storage

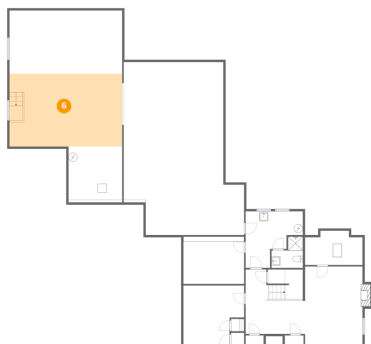


Dimensions: 27'1" x 38'10"  
Area: 888 sq. ft  
Counted as living area: No

Heated: No  
Finished: No  
Enclosed: No  
Contiguous: Yes  
Permitted: Yes  
Wet space: No  
Addition: No  
Conversion: No

# 2230 Sewell Lane Southwest, Raleigh Court, Roanoke, Roanoke city, Virginia, United States, 24015

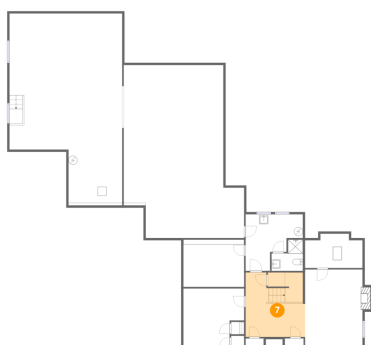
## 6 Floor 1 - Storage



Dimensions: 25'4" x 16'4"  
Area: 416 sq. ft  
Counted as living area: No

Heated: No  
Finished: No  
Enclosed: No  
Contiguous: Yes  
Permitted: Yes  
Wet space: No  
Addition: No  
Conversion: No

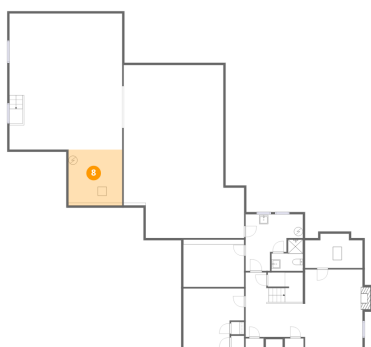
## 7 Floor 1 - Hall



Dimensions: 13'4" x 14'6"  
Area: 187 sq. ft  
Counted as living area: Yes

Heated: Yes  
Finished: Yes  
Enclosed: Yes  
Contiguous: Yes  
Permitted: Yes  
Wet space: No  
Addition: No  
Conversion: No

## 8 Floor 1 - Utility

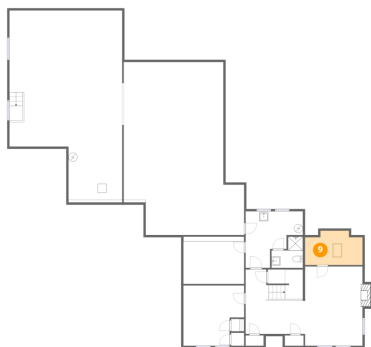


Dimensions: 12'1" x 11'11"  
Area: 152 sq. ft  
Counted as living area: No

Heated: Yes  
Finished: No  
Enclosed: Yes  
Contiguous: Yes  
Permitted: Yes  
Wet space: No  
Addition: No  
Conversion: No

# 2230 Sewell Lane Southwest, Raleigh Court, Roanoke, Roanoke city, Virginia, United States, 24015

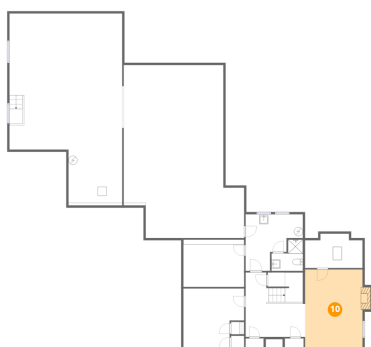
## 9 Floor 1 - Utility



Dimensions: 12'11" x 7'8"  
Area: 90 sq. ft  
Counted as living area: No

Heated: Yes  
Finished: No  
Enclosed: Yes  
Contiguous: Yes  
Permitted: Yes  
Wet space: No  
Addition: No  
Conversion: No

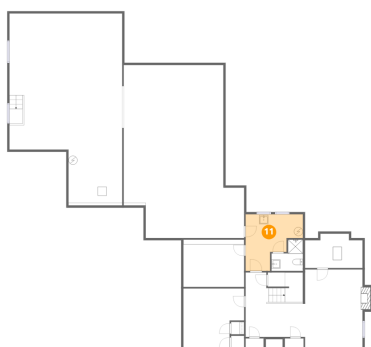
## 10 Floor 1 - Recreation Room



Dimensions: 12'11" x 17'10"  
Area: 239 sq. ft  
Counted as living area: Yes

Heated: Yes  
Finished: Yes  
Enclosed: Yes  
Contiguous: Yes  
Permitted: Yes  
Wet space: No  
Addition: No  
Conversion: No

## 11 Floor 1 - Utility



Dimensions: 12'10" x 12'9"  
Area: 121 sq. ft  
Counted as living area: No

Heated: Yes  
Finished: No  
Enclosed: Yes  
Contiguous: Yes  
Permitted: Yes  
Wet space: No  
Addition: No  
Conversion: No

2230 Sewell Lane Southwest, Raleigh Court, Roanoke, Roanoke city, Virginia, United States, 24015

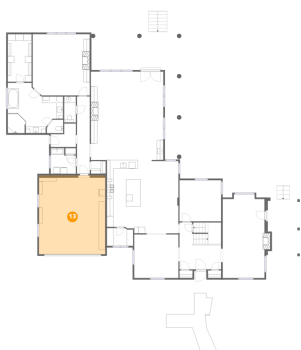
12 Floor 2 - Entry



Dimensions: 7'9" x 7'3"  
Area: 43 sq. ft  
Counted as living area: Yes

Heated: Yes  
Finished: Yes  
Enclosed: Yes  
Contiguous: Yes  
Permitted: Yes  
Wet space: No  
Addition: No  
Conversion: No

13 Floor 2 - Garage



Dimensions: 20'6" x 23'7"  
Area: 499 sq. ft  
Counted as living area: No

Heated: No  
Finished: No  
Enclosed: Yes  
Contiguous: Yes  
Permitted: Yes  
Wet space: No  
Addition: No  
Conversion: No

14 Floor 2 - Walkway



Dimensions: 13'5" x 17'10"  
Area: 116 sq. ft  
Counted as living area: No

Heated: No  
Finished: No  
Enclosed: No  
Contiguous: Yes  
Permitted: No  
Wet space: No  
Addition: No  
Conversion: No

2230 Sewell Lane Southwest, Raleigh Court, Roanoke, Roanoke city, Virginia, United States, 24015

15 Floor 2 - Bath



Dimensions: 3'7" x 8'0"  
Area: 29 sq. ft  
Counted as living area: Yes

Heated: Yes  
Finished: Yes  
Enclosed: Yes  
Contiguous: Yes  
Permitted: Yes  
Wet space: Yes  
Addition: No  
Conversion: No

16 Floor 2 - Primary Bath



Dimensions: 17'1" x 15'6"  
Area: 207 sq. ft  
Counted as living area: Yes

Heated: Yes  
Finished: Yes  
Enclosed: Yes  
Contiguous: Yes  
Permitted: Yes  
Wet space: Yes  
Addition: No  
Conversion: No

17 Floor 2 - Bath



Dimensions: 5'0" x 4'2"  
Area: 18 sq. ft  
Counted as living area: Yes

Heated: Yes  
Finished: Yes  
Enclosed: Yes  
Contiguous: Yes  
Permitted: Yes  
Wet space: Yes  
Addition: No  
Conversion: No

2230 Sewell Lane Southwest, Raleigh Court, Roanoke, Roanoke city, Virginia, United States, 24015

### 18 Floor 2 - Covered Patio



Dimensions: 9'7" x 17'3"  
Area: 179 sq. ft  
Counted as living area: No

Heated: No  
Finished: No  
Enclosed: No  
Contiguous: Yes  
Permitted: Yes  
Wet space: No  
Addition: No  
Conversion: No

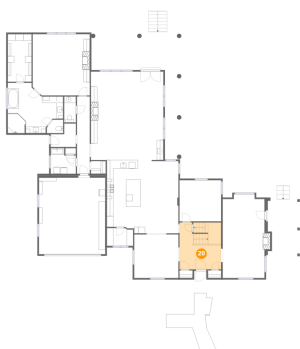
### 19 Floor 2 - Hall



Dimensions: 4'0" x 23'11"  
Area: 95 sq. ft  
Counted as living area: Yes

Heated: Yes  
Finished: Yes  
Enclosed: Yes  
Contiguous: Yes  
Permitted: Yes  
Wet space: No  
Addition: No  
Conversion: No

### 20 Floor 2 - Foyer

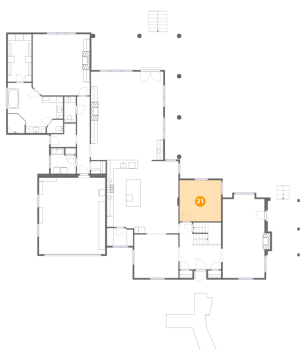


Dimensions: 12'10" x 14'6"  
Area: 184 sq. ft  
Counted as living area: Yes

Heated: Yes  
Finished: Yes  
Enclosed: Yes  
Contiguous: Yes  
Permitted: Yes  
Wet space: No  
Addition: No  
Conversion: No

2230 Sewell Lane Southwest, Raleigh Court, Roanoke, Roanoke city, Virginia, United States, 24015

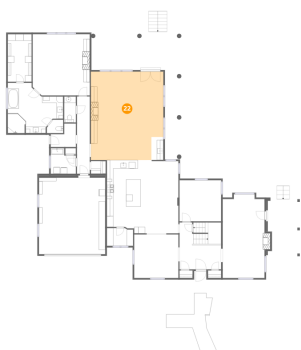
**21** Floor 2 - Office



Dimensions: 12'10" x 12'9"  
Area: 164 sq. ft  
Counted as living area: Yes

Heated: Yes  
Finished: Yes  
Enclosed: Yes  
Contiguous: Yes  
Permitted: Yes  
Wet space: No  
Addition: No  
Conversion: No

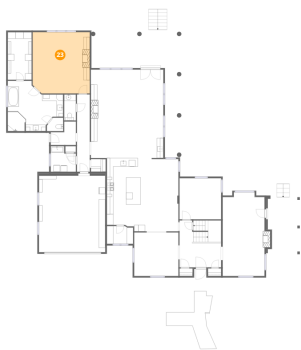
**22** Floor 2 - Family Room



Dimensions: 22'5" x 27'3"  
Area: 586 sq. ft  
Counted as living area: Yes

Heated: Yes  
Finished: Yes  
Enclosed: Yes  
Contiguous: Yes  
Permitted: Yes  
Wet space: No  
Addition: No  
Conversion: No

**23** Floor 2 - Primary Bedroom



Dimensions: 17'8" x 18'11"  
Area: 330 sq. ft  
Counted as living area: Yes

Heated: Yes  
Finished: Yes  
Enclosed: Yes  
Contiguous: Yes  
Permitted: Yes  
Wet space: No  
Addition: No  
Conversion: No

2230 Sewell Lane Southwest, Raleigh Court, Roanoke, Roanoke city, Virginia, United States, 24015

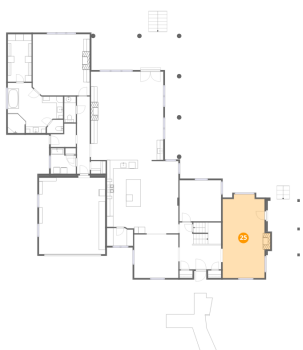
24 Floor 2 - Laundry



Dimensions: 7'9" x 7'11"  
Area: 53 sq. ft  
Counted as living area: Yes

Heated: Yes  
Finished: Yes  
Enclosed: Yes  
Contiguous: Yes  
Permitted: Yes  
Wet space: No  
Addition: No  
Conversion: No

25 Floor 2 - Living Room



Dimensions: 12'11" x 25'10"  
Area: 333 sq. ft  
Counted as living area: Yes

Heated: Yes  
Finished: Yes  
Enclosed: Yes  
Contiguous: Yes  
Permitted: Yes  
Wet space: No  
Addition: No  
Conversion: No

26 Floor 2 - Covered Patio



Dimensions: 27'10" x 39'6"  
Area: 494 sq. ft  
Counted as living area: No

Heated: No  
Finished: No  
Enclosed: No  
Contiguous: Yes  
Permitted: Yes  
Wet space: No  
Addition: No  
Conversion: No

2230 Sewell Lane Southwest, Raleigh Court, Roanoke, Roanoke city, Virginia, United States, 24015

27 Floor 2 - Breakfast Nook



Dimensions: 6'8" x 11'3"  
Area: 75 sq. ft  
Counted as living area: Yes

Heated: Yes  
Finished: Yes  
Enclosed: Yes  
Contiguous: Yes  
Permitted: Yes  
Wet space: No  
Addition: No  
Conversion: No

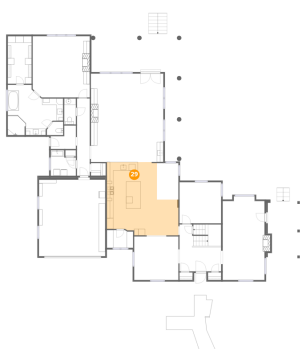
28 Floor 2 - Pantry



Dimensions: 8'2" x 5'6"  
Area: 44 sq. ft  
Counted as living area: Yes

Heated: Yes  
Finished: Yes  
Enclosed: Yes  
Contiguous: Yes  
Permitted: Yes  
Wet space: No  
Addition: No  
Conversion: No

29 Floor 2 - Kitchen



Dimensions: 22'2" x 22'7"  
Area: 408 sq. ft  
Counted as living area: Yes

Heated: Yes  
Finished: Yes  
Enclosed: Yes  
Contiguous: Yes  
Permitted: Yes  
Wet space: No  
Addition: No  
Conversion: No

2230 Sewell Lane Southwest, Raleigh Court, Roanoke, Roanoke city, Virginia, United States, 24015

**30** Floor 2 - Wet Bar



Dimensions: 3'8" x 7'1"  
Area: 26 sq. ft  
Counted as living area: Yes

Heated: Yes  
Finished: Yes  
Enclosed: Yes  
Contiguous: Yes  
Permitted: Yes  
Wet space: No  
Addition: No  
Conversion: No

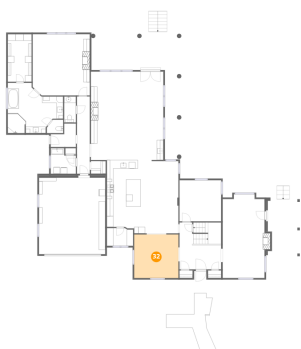
**31** Floor 2 - W.I.C.



Dimensions: 7'4" x 14'9"  
Area: 108 sq. ft  
Counted as living area: Yes

Heated: Yes  
Finished: Yes  
Enclosed: Yes  
Contiguous: Yes  
Permitted: Yes  
Wet space: No  
Addition: No  
Conversion: No

**32** Floor 2 - Dining Room



Dimensions: 13'8" x 13'5"  
Area: 184 sq. ft  
Counted as living area: Yes

Heated: Yes  
Finished: Yes  
Enclosed: Yes  
Contiguous: Yes  
Permitted: Yes  
Wet space: No  
Addition: No  
Conversion: No

2230 Sewell Lane Southwest, Raleigh Court, Roanoke, Roanoke city, Virginia, United States, 24015

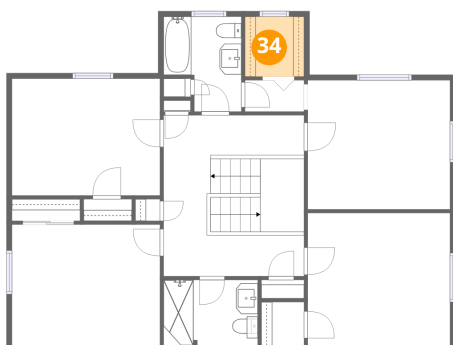
**33** Floor 2 - Porch



Dimensions: 3'9" x 6'10"  
Area: 26 sq. ft  
Counted as living area: No

Heated: No  
Finished: No  
Enclosed: No  
Contiguous: Yes  
Permitted: Yes  
Wet space: No  
Addition: No  
Conversion: No

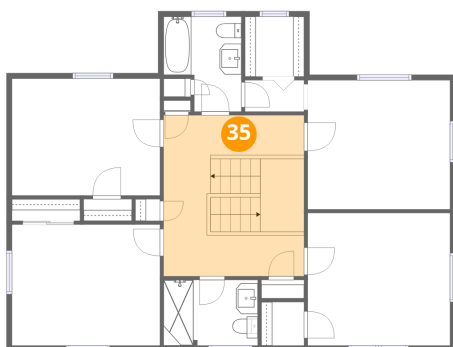
**34** Floor 3 - W.I.C.



Dimensions: 5'5" x 5'6"  
Area: 30 sq. ft  
Counted as living area: Yes

Heated: Yes  
Finished: Yes  
Enclosed: Yes  
Contiguous: Yes  
Permitted: Yes  
Wet space: No  
Addition: No  
Conversion: No

**35** Floor 3 - Hall

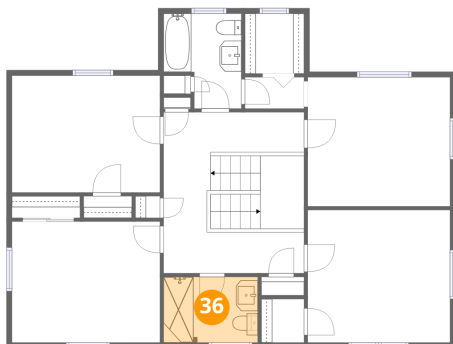


Dimensions: 12'11" x 14'9"  
Area: 191 sq. ft  
Counted as living area: Yes

Heated: Yes  
Finished: Yes  
Enclosed: Yes  
Contiguous: Yes  
Permitted: Yes  
Wet space: No  
Addition: No  
Conversion: No

2230 Sewell Lane Southwest, Raleigh Court, Roanoke, Roanoke city, Virginia, United States, 24015

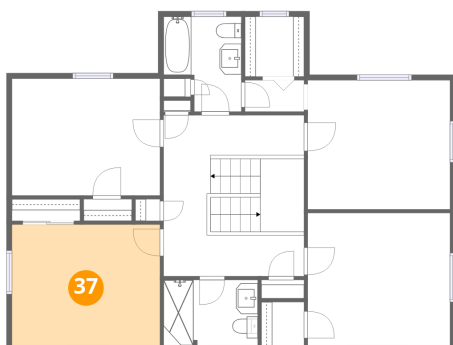
**36** Floor 3 - Bath



Dimensions: 8'8" x 6'0"  
Area: 52 sq. ft  
Counted as living area: Yes

Heated: Yes  
Finished: Yes  
Enclosed: Yes  
Contiguous: Yes  
Permitted: Yes  
Wet space: Yes  
Addition: No  
Conversion: No

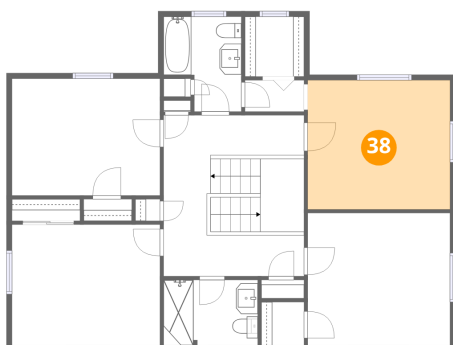
**37** Floor 3 - Bedroom



Dimensions: 13'7" x 11'1"  
Area: 151 sq. ft  
Counted as living area: Yes

Heated: Yes  
Finished: Yes  
Enclosed: Yes  
Contiguous: Yes  
Permitted: Yes  
Wet space: No  
Addition: No  
Conversion: No

**38** Floor 3 - Bedroom

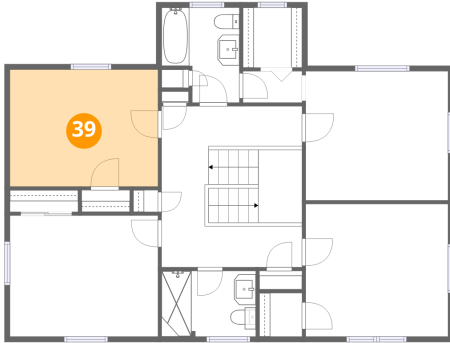


Dimensions: 13'1" x 11'10"  
Area: 155 sq. ft  
Counted as living area: Yes

Heated: Yes  
Finished: Yes  
Enclosed: Yes  
Contiguous: Yes  
Permitted: Yes  
Wet space: No  
Addition: No  
Conversion: No

2230 Sewell Lane Southwest, Raleigh Court, Roanoke, Roanoke city, Virginia, United States, 24015

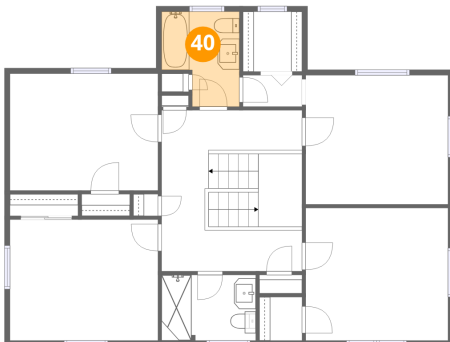
### 39 Floor 3 - Bedroom



Dimensions: 13'7" x 10'9"  
Area: 146 sq. ft  
Counted as living area: Yes

Heated: Yes  
Finished: Yes  
Enclosed: Yes  
Contiguous: Yes  
Permitted: Yes  
Wet space: No  
Addition: No  
Conversion: No

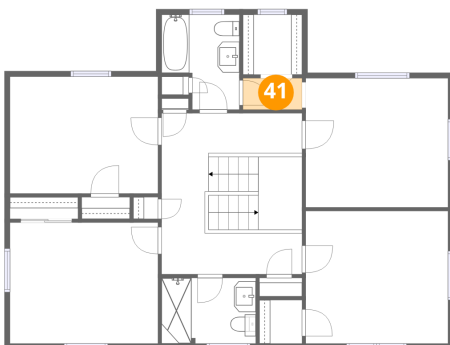
### 40 Floor 3 - Bath



Dimensions: 7'2" x 8'9"  
Area: 53 sq. ft  
Counted as living area: Yes

Heated: Yes  
Finished: Yes  
Enclosed: Yes  
Contiguous: Yes  
Permitted: Yes  
Wet space: Yes  
Addition: No  
Conversion: No

### 41 Floor 3 - Hall

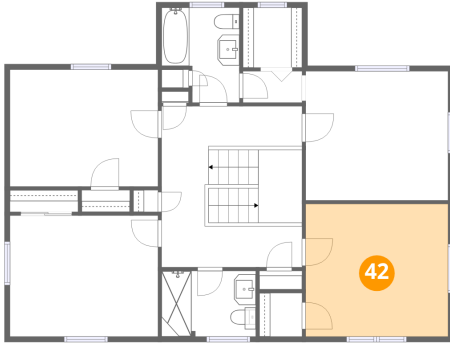


Dimensions: 5'5" x 2'11"  
Area: 16 sq. ft  
Counted as living area: Yes

Heated: Yes  
Finished: Yes  
Enclosed: Yes  
Contiguous: Yes  
Permitted: Yes  
Wet space: No  
Addition: No  
Conversion: No

2230 Sewell Lane Southwest, Raleigh Court, Roanoke, Roanoke city, Virginia, United States, 24015

**42** Floor 3 - Bedroom



Dimensions: 13'1" x 12'2"  
Area: 159 sq. ft  
Counted as living area: Yes

Heated: Yes  
Finished: Yes  
Enclosed: Yes  
Contiguous: Yes  
Permitted: Yes  
Wet space: No  
Addition: No  
Conversion: No