

Home data report

1900 Pine St, Sturgis, SD, US



Total Area: 1747 sq. ft

Basement: 20 sq. ft, 1st Floor: 997 sq. ft, 2nd Floor: 730 sq. ft

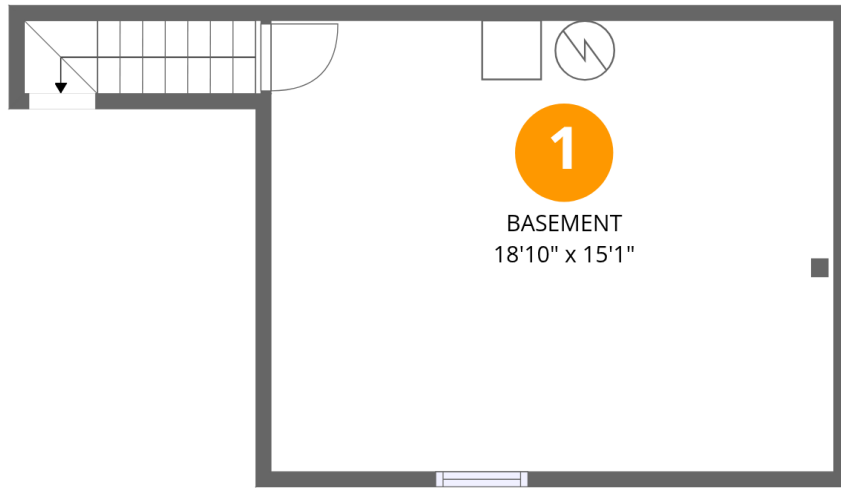
Excluded: Basement 283 sq. ft, Walls: 173 sq. ft

Property summary

 **3** Floors

 **4** Bedrooms

 **2** Bathrooms



Room dimensions

Floor 1 Below grade

Total: 20 sqft

Excluded: 283 sqft

#		Dimensions	sqft	Counted as living area
1	Basement	18'10" x 15'1"	283 sq. ft	No

Home data report

1900 Pine St, Sturgis, SD, US



Room dimensions

Floor 2

Total: 997 sqft

Excluded: 0 sqft

#		Dimensions	sqft	Counted as living area
2	Dining Area	11'10" x 8'5"	99 sq. ft	Yes
3	Bedroom	12'6" x 13'2"	145 sq. ft	Yes
4	Bath	9'0" x 8'2"	73 sq. ft	Yes
5	Kitchen	11'10" x 6'11"	82 sq. ft	Yes
6	Living Room	12'7" x 15'5"	193 sq. ft	Yes
7	Hall	9'0" x 4'9"	42 sq. ft	Yes
8	Laundry	7'9" x 8'9"	89 sq. ft	Yes
9	Bedroom	8'11" x 11'5"	103 sq. ft	Yes
10	Hall	6'5" x 4'4"	28 sq. ft	Yes
11	Foyer	6'5" x 11'1"	69 sq. ft	Yes



Room dimensions

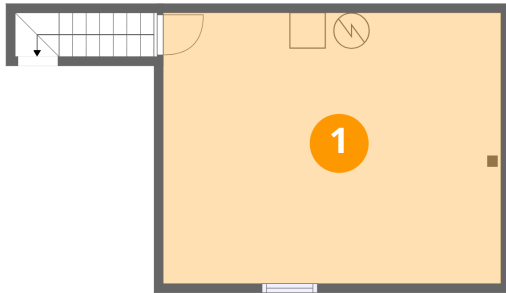
Floor 3

Total: 730sqft

Excluded: 0sqft

#		Dimensions	sqft	Counted as living area
12	W.I.C.	5'0" x 11'1"	56 sq. ft	Yes
13	Bath	6'1" x 6'8"	37 sq. ft	Yes
14	Sitting Room	18'4" x 15'7"	270 sq. ft	Yes
15	Primary Bedroom	15'6" x 13'0"	179 sq. ft	Yes
16	W.I.C.	5'0" x 9'5"	48 sq. ft	Yes
17	Bedroom	11'0" x 7'8"	85 sq. ft	Yes

1 Floor 1 - Basement



Dimensions: 18'10" x 15'1"
Area: 283 sq. ft
Counted as living area: No

Heated: Yes
Finished: No
Enclosed: Yes
Contiguous: Yes
Permitted: Yes
Wet space: No
Addition: No
Conversion: No

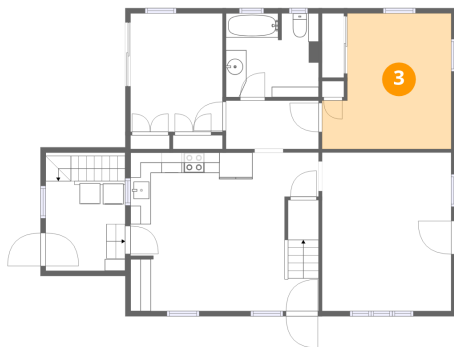
2 Floor 2 - Dining Area



Dimensions: 11'10" x 8'5"
Area: 99 sq. ft
Counted as living area: Yes

Heated: Yes
Finished: Yes
Enclosed: Yes
Contiguous: Yes
Permitted: Yes
Wet space: No
Addition: No
Conversion: No

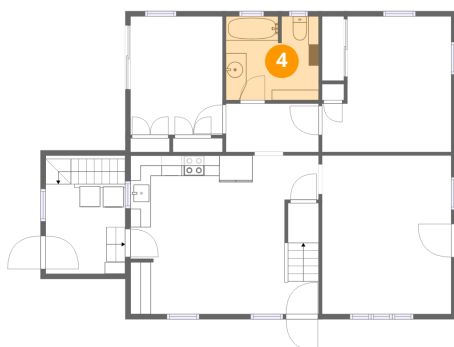
3 Floor 2 - Bedroom



Dimensions: 12'6" x 13'2"
Area: 145 sq. ft
Counted as living area: Yes

Heated: Yes
Finished: Yes
Enclosed: Yes
Contiguous: Yes
Permitted: Yes
Wet space: No
Addition: No
Conversion: No

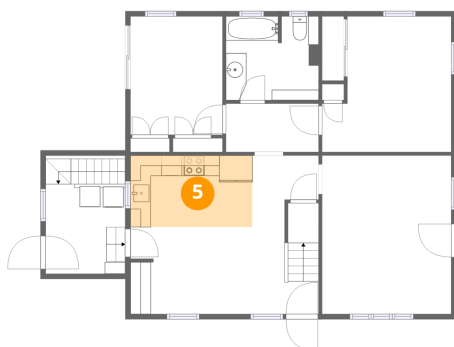
4 Floor 2 - Bath



Dimensions: 9'0" x 8'2"
Area: 73 sq. ft
Counted as living area: Yes

Heated: Yes
Finished: Yes
Enclosed: Yes
Contiguous: Yes
Permitted: Yes
Wet space: Yes
Addition: No
Conversion: No

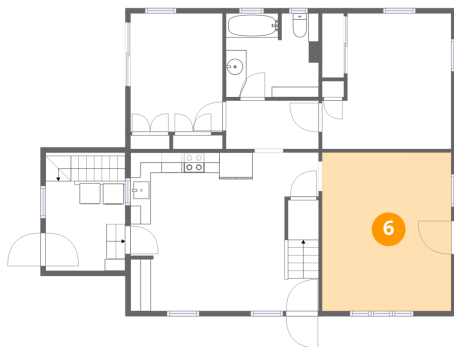
5 Floor 2 - Kitchen



Dimensions: 11'10" x 6'11"
Area: 82 sq. ft
Counted as living area: Yes

Heated: Yes
Finished: Yes
Enclosed: Yes
Contiguous: Yes
Permitted: Yes
Wet space: No
Addition: No
Conversion: No

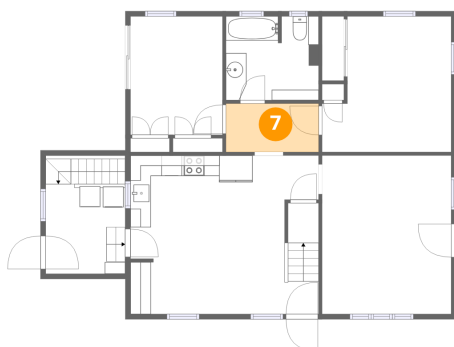
6 Floor 2 - Living Room



Dimensions: 12'7" x 15'5"
Area: 193 sq. ft
Counted as living area: Yes

Heated: Yes
Finished: Yes
Enclosed: Yes
Contiguous: Yes
Permitted: Yes
Wet space: No
Addition: No
Conversion: No

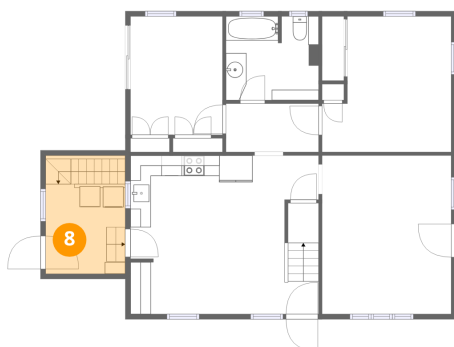
7 Floor 2 - Hall



Dimensions: 9'0" x 4'9"
Area: 42 sq. ft
Counted as living area: Yes

Heated: Yes
Finished: Yes
Enclosed: Yes
Contiguous: Yes
Permitted: Yes
Wet space: No
Addition: No
Conversion: No

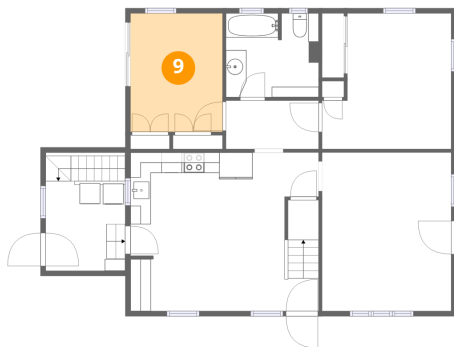
8 Floor 2 - Laundry



Dimensions: 7'9" x 8'9"
Area: 89 sq. ft
Counted as living area: Yes

Heated: Yes
Finished: Yes
Enclosed: Yes
Contiguous: Yes
Permitted: Yes
Wet space: No
Addition: No
Conversion: No

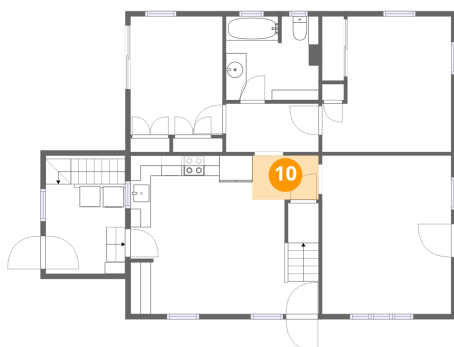
9 Floor 2 - Bedroom



Dimensions: 8'11" x 11'5"
Area: 103 sq. ft
Counted as living area: Yes

Heated: Yes
Finished: Yes
Enclosed: Yes
Contiguous: Yes
Permitted: Yes
Wet space: No
Addition: No
Conversion: No

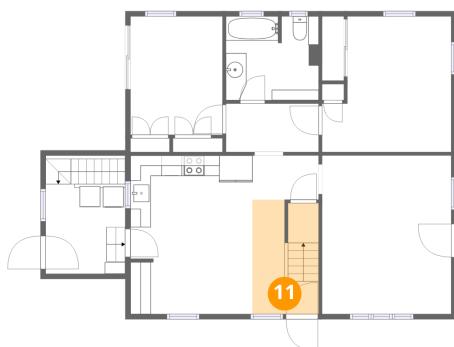
10 Floor 2 - Hall



Dimensions: 6'5" x 4'4"
Area: 28 sq. ft
Counted as living area: Yes

Heated: Yes
Finished: Yes
Enclosed: Yes
Contiguous: Yes
Permitted: Yes
Wet space: No
Addition: No
Conversion: No

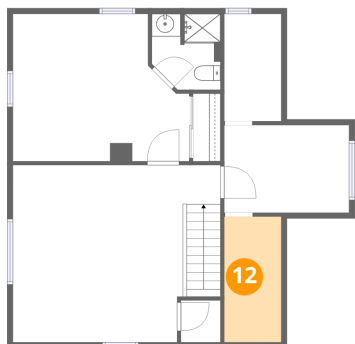
11 Floor 2 - Foyer



Dimensions: 6'5" x 11'1"
Area: 69 sq. ft
Counted as living area: Yes

Heated: Yes
Finished: Yes
Enclosed: Yes
Contiguous: Yes
Permitted: Yes
Wet space: No
Addition: No
Conversion: No

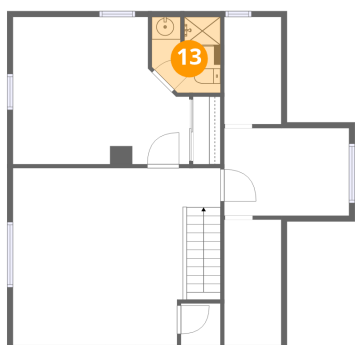
12 Floor 3 - W.I.C.



Dimensions: 5'0" x 11'1"
Area: 56 sq. ft
Counted as living area: Yes

Heated: Yes
Finished: Yes
Enclosed: Yes
Contiguous: Yes
Permitted: Yes
Wet space: No
Addition: No
Conversion: No

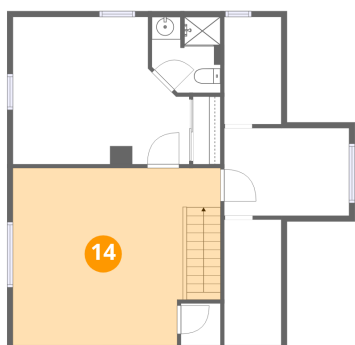
13 Floor 3 - Bath



Dimensions: 6'1" x 6'8"
Area: 37 sq. ft
Counted as living area: Yes

Heated: Yes
Finished: Yes
Enclosed: Yes
Contiguous: Yes
Permitted: Yes
Wet space: Yes
Addition: No
Conversion: No

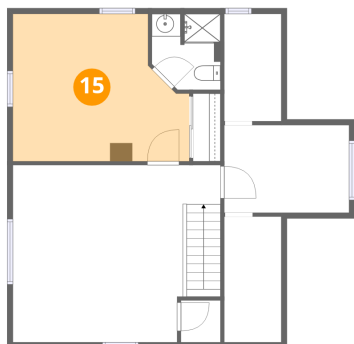
14 Floor 3 - Sitting Room



Dimensions: 18'4" x 15'7"
Area: 270 sq. ft
Counted as living area: Yes

Heated: Yes
Finished: Yes
Enclosed: Yes
Contiguous: Yes
Permitted: Yes
Wet space: No
Addition: No
Conversion: No

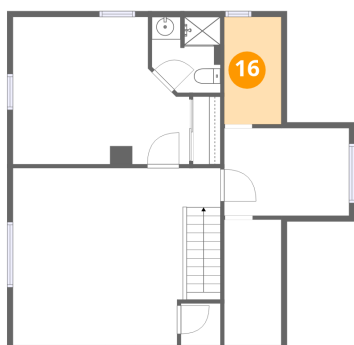
15 Floor 3 - Primary Bedroom



Dimensions: 15'6" x 13'0"
Area: 179 sq. ft
Counted as living area: Yes

Heated: Yes
Finished: Yes
Enclosed: Yes
Contiguous: Yes
Permitted: Yes
Wet space: No
Addition: No
Conversion: No

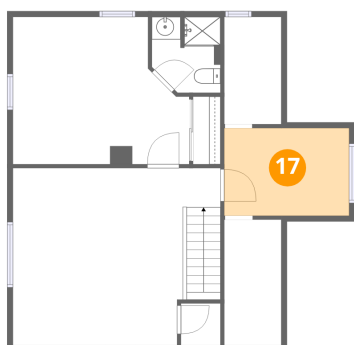
16 Floor 3 - W.I.C.



Dimensions: 5'0" x 9'5"
Area: 48 sq. ft
Counted as living area: Yes

Heated: Yes
Finished: Yes
Enclosed: Yes
Contiguous: Yes
Permitted: Yes
Wet space: No
Addition: No
Conversion: No

17 Floor 3 - Bedroom



Dimensions: 11'0" x 7'8"
Area: 85 sq. ft
Counted as living area: Yes

Heated: Yes
Finished: Yes
Enclosed: Yes
Contiguous: Yes
Permitted: Yes
Wet space: No
Addition: No
Conversion: No