

## Home data report

**3402 Westmoreland Drive, Mount Vernon Heights, Cave Spring,  
Roanoke, Roanoke County, Virginia, United States, 24018**



**Total Area: 1229 sq. ft**

1st Floor: 457 sq. ft, 2nd Floor: 772 sq. ft

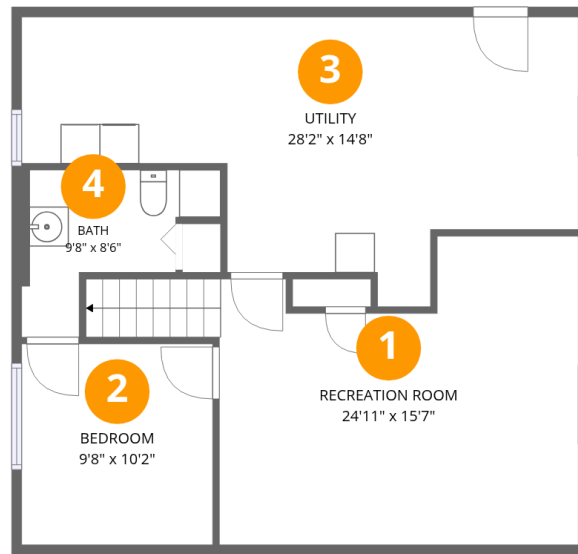
Excluded: Utility 295 sq. ft, Porch 37 sq. ft, Deck 122 sq. ft, Walls: 112 sq. ft

## Property summary



## Home data report

**3402 Westmoreland Drive, Mount Vernon Heights, Cave Spring,  
Roanoke, Roanoke County, Virginia, United States, 24018**



## Room dimensions

Floor 1

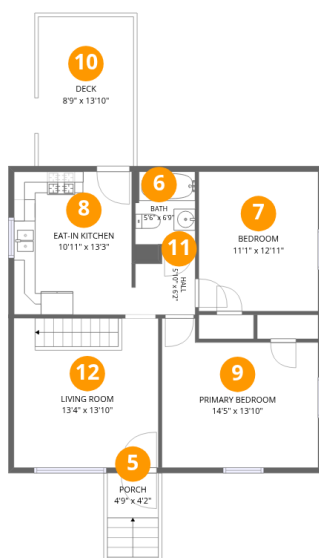
Total:457sqft

Excluded: 295sqft

#		Dimensions	sqft	Counted as living area
1	Recreation Room	24'11" x 15'7"	266 sq. ft	Yes
2	Bedroom	9'8" x 10'2"	98 sq. ft	Yes
3	Utility	28'2" x 14'8"	295 sq. ft	No
4	Bath	9'8" x 8'6"	55 sq. ft	Yes

## Home data report

**3402 Westmoreland Drive, Mount Vernon Heights, Cave Spring,  
Roanoke, Roanoke County, Virginia, United States, 24018**



## Room dimensions

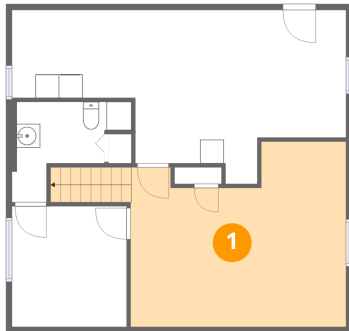
Floor 2

Total:772sqft Excluded: 159sqft

#		Dimensions	sqft	Counted as living area
5	Porch	4'9" x 4'2"	37 sq. ft	No
6	Bath	5'6" x 6'9"	40 sq. ft	Yes
7	Bedroom	11'1" x 12'11"	143 sq. ft	Yes
8	Eat-in Kitchen	10'11" x 13'3"	145 sq. ft	Yes
9	Primary Bedroom	14'5" x 13'10"	174 sq. ft	Yes
10	Deck	8'9" x 13'10"	122 sq. ft	No
11	Hall	5'10" x 6'2"	32 sq. ft	Yes
12	Living Room	13'4" x 13'10"	185 sq. ft	Yes

3402 Westmoreland Drive, Mount Vernon Heights, Cave Spring,  
Roanoke, Roanoke County, Virginia, United States, 24018

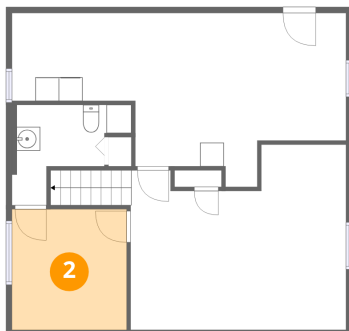
## 1 Floor 1 - Recreation Room



Dimensions: 24'11" x 15'7"  
Area: 266 sq. ft  
Counted as living area: Yes

Heated: Yes  
Finished: Yes  
Enclosed: Yes  
Contiguous: Yes  
Permitted: Yes  
Wet space: No  
Addition: No  
Conversion: No

## 2 Floor 1 - Bedroom

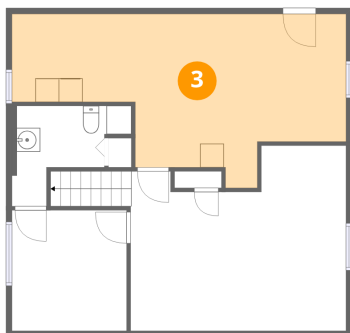


Dimensions: 9'8" x 10'2"  
Area: 98 sq. ft  
Counted as living area: Yes

Heated: Yes  
Finished: Yes  
Enclosed: Yes  
Contiguous: Yes  
Permitted: Yes  
Wet space: No  
Addition: No  
Conversion: No

3402 Westmoreland Drive, Mount Vernon Heights, Cave Spring,  
Roanoke, Roanoke County, Virginia, United States, 24018

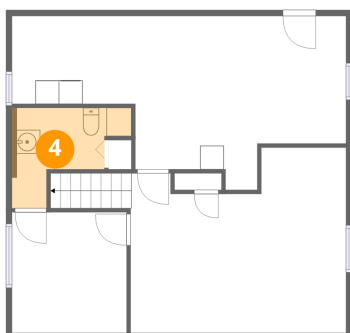
### 3 Floor 1 - Utility



Dimensions: 28'2" x 14'8"  
Area: 295 sq. ft  
Counted as living area: No

Heated: Yes  
Finished: No  
Enclosed: Yes  
Contiguous: Yes  
Permitted: Yes  
Wet space: No  
Addition: No  
Conversion: No

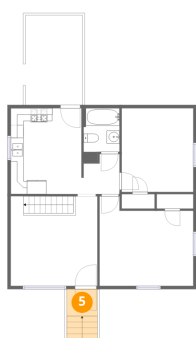
### 4 Floor 1 - Bath



Dimensions: 9'8" x 8'6"  
Area: 55 sq. ft  
Counted as living area: Yes

Heated: Yes  
Finished: Yes  
Enclosed: Yes  
Contiguous: Yes  
Permitted: Yes  
Wet space: No  
Addition: No  
Conversion: No

### 5 Floor 2 - Porch



Dimensions: 4'9" x 4'2"  
Area: 37 sq. ft  
Counted as living area: No

Heated: No  
Finished: No  
Enclosed: No  
Contiguous: Yes  
Permitted: Yes  
Wet space: No  
Addition: No  
Conversion: No

3402 Westmoreland Drive, Mount Vernon Heights, Cave Spring,  
Roanoke, Roanoke County, Virginia, United States, 24018

**6** Floor 2 - Bath



Dimensions: 5'6" x 6'9"  
Area: 40 sq. ft  
Counted as living area: Yes

Heated: Yes  
Finished: Yes  
Enclosed: Yes  
Contiguous: Yes  
Permitted: Yes  
Wet space: Yes  
Addition: No  
Conversion: No

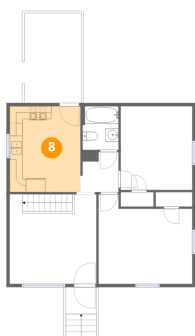
**7** Floor 2 - Bedroom



Dimensions: 11'1" x 12'11"  
Area: 143 sq. ft  
Counted as living area: Yes

Heated: Yes  
Finished: Yes  
Enclosed: Yes  
Contiguous: Yes  
Permitted: Yes  
Wet space: No  
Addition: No  
Conversion: No

**8** Floor 2 - Eat-in Kitchen



Dimensions: 10'11" x 13'3"  
Area: 145 sq. ft  
Counted as living area: Yes

Heated: Yes  
Finished: Yes  
Enclosed: Yes  
Contiguous: Yes  
Permitted: Yes  
Wet space: No  
Addition: No  
Conversion: No

3402 Westmoreland Drive, Mount Vernon Heights, Cave Spring,  
Roanoke, Roanoke County, Virginia, United States, 24018

**9** Floor 2 - Primary Bedroom

---

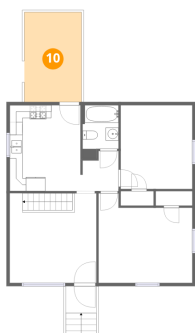


Dimensions: 14'5" x 13'10"  
Area: 174 sq. ft  
Counted as living area: Yes

Heated: Yes  
Finished: Yes  
Enclosed: Yes  
Contiguous: Yes  
Permitted: Yes  
Wet space: No  
Addition: No  
Conversion: No

**10** Floor 2 - Deck

---



Dimensions: 8'9" x 13'10"  
Area: 122 sq. ft  
Counted as living area: No

Heated: No  
Finished: No  
Enclosed: No  
Contiguous: Yes  
Permitted: Yes  
Wet space: No  
Addition: No  
Conversion: No

**11** Floor 2 - Hall

---



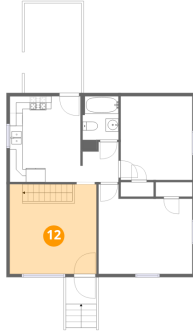
Dimensions: 5'10" x 6'2"  
Area: 32 sq. ft  
Counted as living area: Yes

Heated: Yes  
Finished: Yes  
Enclosed: Yes  
Contiguous: Yes  
Permitted: Yes  
Wet space: No  
Addition: No  
Conversion: No

**3402 Westmoreland Drive, Mount Vernon Heights, Cave Spring,  
Roanoke, Roanoke County, Virginia, United States, 24018**

**12 Floor 2 - Living Room**

---



**Dimensions: 13'4" x 13'10"**  
**Area: 185 sq. ft**  
**Counted as living area: Yes**

**Heated: Yes**  
**Finished: Yes**  
**Enclosed: Yes**  
**Contiguous: Yes**  
**Permitted: Yes**  
**Wet space: No**  
**Addition: No**  
**Conversion: No**