

Home data report

3459 South Ammons Street, Bear Creek, Lakewood, Jefferson County, Colorado, United States, 80227, #4-7



**Total Area: 1962 sq. ft**

Below Ground: 658 sq. ft, 1st Floor: 653 sq. ft, 2nd Floor: 651 sq. ft

Excluded: Garage 215 sq. ft, Porch 108 sq. ft, Fireplace 9 sq. ft, Walls: 148 sq. ft

Property summary

 **3** Floors

 **3** Bedrooms

 **3** Bathrooms

Home data report

**3459 South Ammons Street, Bear Creek, Lakewood, Jefferson  
County, Colorado, United States, 80227, #4-7**



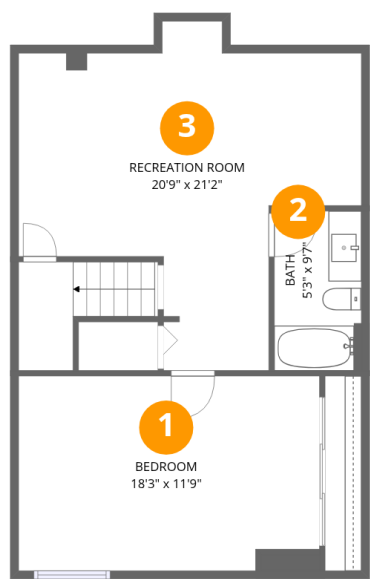
**1**  
Half baths



**1**  
Garages

Home data report

3459 South Ammons Street, Bear Creek, Lakewood, Jefferson County, Colorado, United States, 80227, #4-7



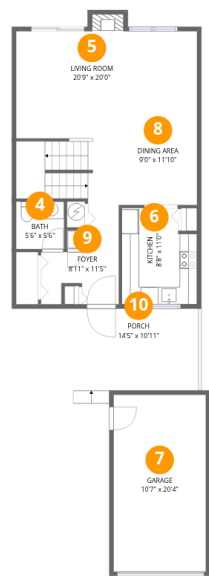
Room dimensions

Floor 1 Below grade Total:658sqft   Excluded: 0sqft

#		Dimensions	sqft	Counted as living area
1	Bedroom	18'3" x 11'9"	210 sq. ft	Yes
2	Bath	5'3" x 9'7"	51 sq. ft	Yes
3	Recreation Room	20'9" x 21'2"	289 sq. ft	Yes

Home data report

3459 South Ammons Street, Bear Creek, Lakewood, Jefferson County, Colorado, United States, 80227, #4-7



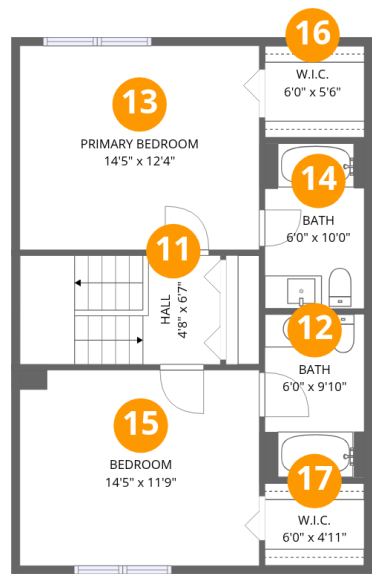
Room dimensions

Floor 2 Total:653sqft   Excluded: 332sqft

#		Dimensions	sqft	Counted as living area
4	Bath	5'6" x 5'6"	30 sq. ft	Yes
5	Living Room	20'9" x 20'0"	307 sq. ft	Yes
6	Kitchen	8'8" x 11'0"	89 sq. ft	Yes
7	Garage	10'7" x 20'4"	215 sq. ft	No
8	Dining Area	9'0" x 11'10"	106 sq. ft	Yes
9	Foyer	8'11" x 11'5"	67 sq. ft	Yes
10	Porch	14'5" x 10'11"	108 sq. ft	No

Home data report

3459 South Ammons Street, Bear Creek, Lakewood, Jefferson County, Colorado, United States, 80227, #4-7



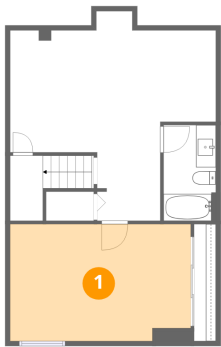
Room dimensions

Floor 3 Total:651sqft   Excluded: 0sqft

#		Dimensions	sqft	Counted as living area
11	Hall	4'8" x 6'7"	79 sq. ft	Yes
12	Bath	6'0" x 9'10"	59 sq. ft	Yes
13	Primary Bedroom	14'5" x 12'4"	178 sq. ft	Yes
14	Bath	6'0" x 10'0"	60 sq. ft	Yes
15	Bedroom	14'5" x 11'9"	170 sq. ft	Yes
16	W.I.C.	6'0" x 5'6"	33 sq. ft	Yes
17	W.I.C.	6'0" x 4'11"	30 sq. ft	Yes

3459 South Ammons Street, Bear Creek, Lakewood, Jefferson County, Colorado, United States, 80227, #4-7

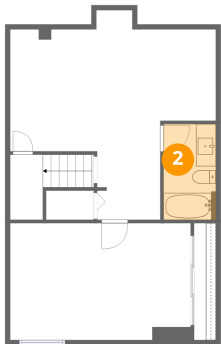
1 Floor 1 - Bedroom



Dimensions: 18'3" x 11'9"  
Area: 210 sq. ft  
Counted as living area: Yes

Heated: Yes  
Finished: Yes  
Enclosed: Yes  
Contiguous: Yes  
Permitted: Yes  
Wet space: No  
Addition: No  
Conversion: No

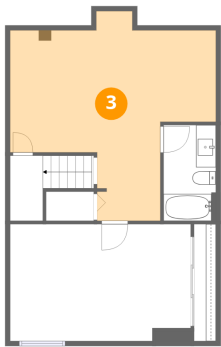
2 Floor 1 - Bath



Dimensions: 5'3" x 9'7"  
Area: 51 sq. ft  
Counted as living area: Yes

Heated: Yes  
Finished: Yes  
Enclosed: Yes  
Contiguous: Yes  
Permitted: Yes  
Wet space: Yes  
Addition: No  
Conversion: No

3 Floor 1 - Recreation Room



Dimensions: 20'9" x 21'2"  
Area: 289 sq. ft  
Counted as living area: Yes

Heated: Yes  
Finished: Yes  
Enclosed: Yes  
Contiguous: Yes  
Permitted: Yes  
Wet space: No  
Addition: No  
Conversion: No

4 Floor 2 - Bath



Dimensions: 5'6" x 5'6"  
Area: 30 sq. ft  
Counted as living area: Yes

Heated: Yes  
Finished: Yes  
Enclosed: Yes  
Contiguous: Yes  
Permitted: Yes  
Wet space: Yes  
Addition: No  
Conversion: No

5 Floor 2 - Living Room



Dimensions: 20'9" x 20'0"  
Area: 307 sq. ft  
Counted as living area: Yes

Heated: Yes  
Finished: Yes  
Enclosed: Yes  
Contiguous: Yes  
Permitted: Yes  
Wet space: No  
Addition: No  
Conversion: No

6 Floor 2 - Kitchen



Dimensions: 8'8" x 11'0"  
Area: 89 sq. ft  
Counted as living area: Yes

Heated: Yes  
Finished: Yes  
Enclosed: Yes  
Contiguous: Yes  
Permitted: Yes  
Wet space: No  
Addition: No  
Conversion: No

7 Floor 2 - Garage



Dimensions: 10'7" x 20'4"  
Area: 215 sq. ft  
Counted as living area: No

Heated: No  
Finished: No  
Enclosed: Yes  
Contiguous: Yes  
Permitted: Yes  
Wet space: No  
Addition: No  
Conversion: No

8 Floor 2 - Dining Area



Dimensions: 9'0" x 11'10"  
Area: 106 sq. ft  
Counted as living area: Yes

Heated: Yes  
Finished: Yes  
Enclosed: Yes  
Contiguous: Yes  
Permitted: Yes  
Wet space: No  
Addition: No  
Conversion: No



9 Floor 2 - Foyer



Dimensions: 8'11" x 11'5"  
Area: 67 sq. ft  
Counted as living area: Yes

Heated: Yes  
Finished: Yes  
Enclosed: Yes  
Contiguous: Yes  
Permitted: Yes  
Wet space: No  
Addition: No  
Conversion: No

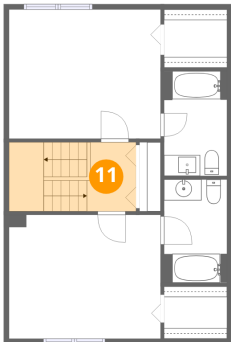
10 Floor 2 - Porch



Dimensions: 14'5" x 10'11"  
Area: 108 sq. ft  
Counted as living area: No

Heated: No  
Finished: No  
Enclosed: No  
Contiguous: Yes  
Permitted: Yes  
Wet space: No  
Addition: No  
Conversion: No

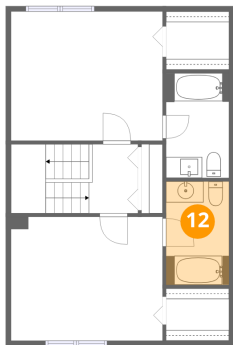
11 Floor 3 - Hall



Dimensions: 4'8" x 6'7"  
Area: 79 sq. ft  
Counted as living area: Yes

Heated: Yes  
Finished: Yes  
Enclosed: Yes  
Contiguous: Yes  
Permitted: Yes  
Wet space: No  
Addition: No  
Conversion: No

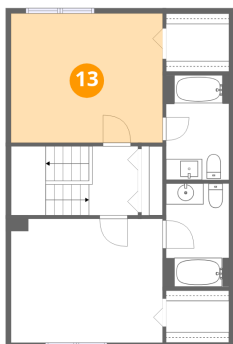
12 Floor 3 - Bath



Dimensions: 6'0" x 9'10"  
Area: 59 sq. ft  
Counted as living area: Yes

Heated: Yes  
Finished: Yes  
Enclosed: Yes  
Contiguous: Yes  
Permitted: Yes  
Wet space: Yes  
Addition: No  
Conversion: No

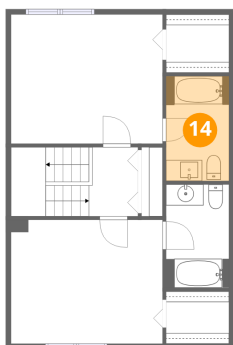
13 Floor 3 - Primary Bedroom



Dimensions: 14'5" x 12'4"  
Area: 178 sq. ft  
Counted as living area: Yes

Heated: Yes  
Finished: Yes  
Enclosed: Yes  
Contiguous: Yes  
Permitted: Yes  
Wet space: No  
Addition: No  
Conversion: No

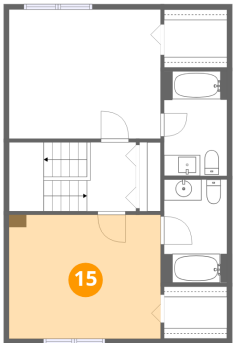
14 Floor 3 - Bath



Dimensions: 6'0" x 10'0"  
Area: 60 sq. ft  
Counted as living area: Yes

Heated: Yes  
Finished: Yes  
Enclosed: Yes  
Contiguous: Yes  
Permitted: Yes  
Wet space: Yes  
Addition: No  
Conversion: No

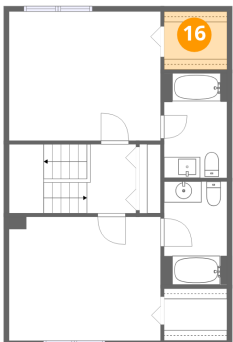
15 Floor 3 - Bedroom



Dimensions: 14'5" x 11'9"  
Area: 170 sq. ft  
Counted as living area: Yes

Heated: Yes  
Finished: Yes  
Enclosed: Yes  
Contiguous: Yes  
Permitted: Yes  
Wet space: No  
Addition: No  
Conversion: No

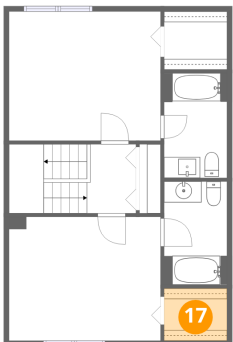
16 Floor 3 - W.I.C.



Dimensions: 6'0" x 5'6"  
Area: 33 sq. ft  
Counted as living area: Yes

Heated: Yes  
Finished: Yes  
Enclosed: Yes  
Contiguous: Yes  
Permitted: Yes  
Wet space: No  
Addition: No  
Conversion: No

17 Floor 3 - W.I.C.



Dimensions: 6'0" x 4'11"  
Area: 30 sq. ft  
Counted as living area: Yes

Heated: Yes  
Finished: Yes  
Enclosed: Yes  
Contiguous: Yes  
Permitted: Yes  
Wet space: No  
Addition: No  
Conversion: No