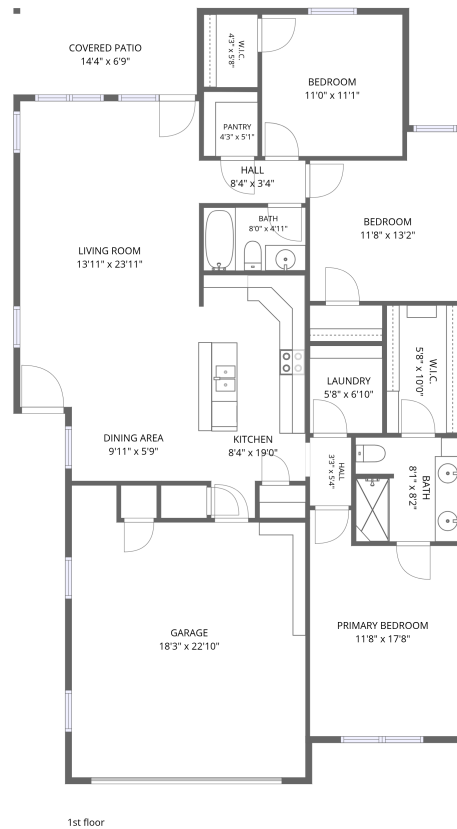


## Home data report

201 Chelsea Court, Granbury, Hood County, Texas, United States, 76049



**Total Area: 1356 sq. ft**

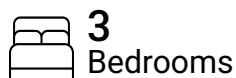
1st Floor: 1356 sq. ft

Excluded: Covered patio 97 sq. ft, Garage 382 sq. ft, Walls: 97 sq. ft

## Property summary



**1**  
Floors



**3**  
Bedrooms



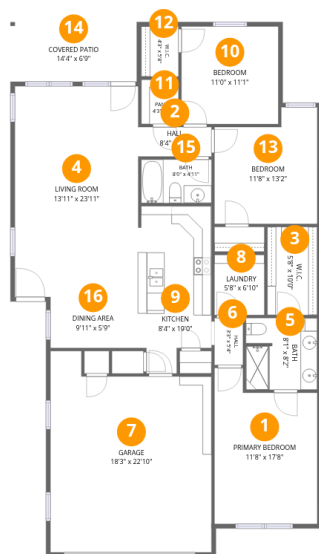
**2**  
Bathrooms



**1**  
Garages

Home data report

201 Chelsea Court, Granbury, Hood County, Texas, United States, 76049



Room dimensions

Floor 1

Total:1356sqft Excluded: 479sqft

#		Dimensions	sqft	Counted as living area
1	Primary Bedroom	11'8" x 17'8"	183 sq. ft	Yes
2	Hall	8'4" x 3'4"	28 sq. ft	Yes
3	W.I.C.	5'8" x 10'0"	57 sq. ft	Yes
4	Living Room	13'11" x 23'11"	335 sq. ft	Yes
5	Bath	8'1" x 8'2"	65 sq. ft	Yes
6	Hall	3'3" x 5'4"	17 sq. ft	Yes
7	Garage	18'3" x 22'10"	374 sq. ft	No
8	Laundry	5'8" x 6'10"	39 sq. ft	Yes
9	Kitchen	8'4" x 19'0"	143 sq. ft	Yes
10	Bedroom	11'0" x 11'1"	122 sq. ft	Yes
11	Pantry	4'3" x 5'1"	21 sq. ft	Yes

Home data report

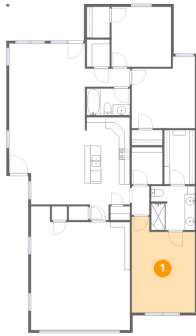
## 201 Chelsea Court, Granbury, Hood County, Texas, United States, 76049

#		Dimensions	sqft	Counted as living area
12	W.I.C.	4'3" x 5'8"	24 sq. ft	Yes
13	Bedroom	11'8" x 13'2"	137 sq. ft	Yes
14	Covered Patio	14'4" x 6'9"	97 sq. ft	No
15	Bath	8'0" x 4'11"	39 sq. ft	Yes
16	Dining Area	9'11" x 5'9"	58 sq. ft	Yes

201 Chelsea Court, Granbury, Hood County, Texas, United States, 76049

**1** Floor 1 - Primary Bedroom

---

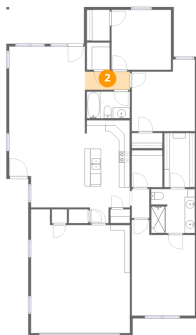


Dimensions: 11'8" x 17'8"  
Area: 183 sq. ft  
Counted as living area: Yes

Heated: Yes  
Finished: Yes  
Enclosed: Yes  
Contiguous: Yes  
Permitted: Yes  
Wet space: No  
Addition: No  
Conversion: No

**2** Floor 1 - Hall

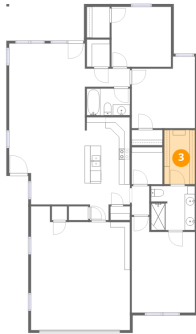
---



Dimensions: 8'4" x 3'4"  
Area: 28 sq. ft  
Counted as living area: Yes

Heated: Yes  
Finished: Yes  
Enclosed: Yes  
Contiguous: Yes  
Permitted: Yes  
Wet space: No  
Addition: No  
Conversion: No

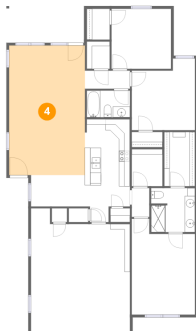
**3** Floor 1 - W.I.C.



Dimensions: 5'8" x 10'0"  
Area: 57 sq. ft  
Counted as living area: Yes

Heated: Yes  
Finished: Yes  
Enclosed: Yes  
Contiguous: Yes  
Permitted: Yes  
Wet space: No  
Addition: No  
Conversion: No

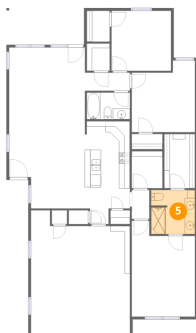
**4** Floor 1 - Living Room



Dimensions: 13'11" x 23'11"  
Area: 335 sq. ft  
Counted as living area: Yes

Heated: Yes  
Finished: Yes  
Enclosed: Yes  
Contiguous: Yes  
Permitted: Yes  
Wet space: No  
Addition: No  
Conversion: No

**5** Floor 1 - Bath

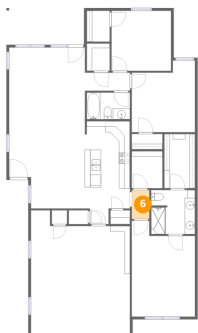


Dimensions: 8'1" x 8'2"  
Area: 65 sq. ft  
Counted as living area: Yes

Heated: Yes  
Finished: Yes  
Enclosed: Yes  
Contiguous: Yes  
Permitted: Yes  
Wet space: Yes  
Addition: No  
Conversion: No

# 201 Chelsea Court, Granbury, Hood County, Texas, United States, 76049

## 6 Floor 1 - Hall



Dimensions: 3'3" x 5'4"  
Area: 17 sq. ft  
Counted as living area: Yes

Heated: Yes  
Finished: Yes  
Enclosed: Yes  
Contiguous: Yes  
Permitted: Yes  
Wet space: No  
Addition: No  
Conversion: No

## 7 Floor 1 - Garage



Dimensions: 18'3" x 22'10"  
Area: 374 sq. ft  
Counted as living area: No

Heated: No  
Finished: No  
Enclosed: Yes  
Contiguous: Yes  
Permitted: Yes  
Wet space: No  
Addition: No  
Conversion: No

## 8 Floor 1 - Laundry

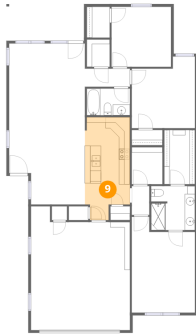


Dimensions: 5'8" x 6'10"  
Area: 39 sq. ft  
Counted as living area: Yes

Heated: Yes  
Finished: Yes  
Enclosed: Yes  
Contiguous: Yes  
Permitted: Yes  
Wet space: No  
Addition: No  
Conversion: No

201 Chelsea Court, Granbury, Hood County, Texas, United States, 76049

9 Floor 1 - Kitchen



Dimensions: 8'4" x 19'0"  
Area: 143 sq. ft  
Counted as living area: Yes

Heated: Yes  
Finished: Yes  
Enclosed: Yes  
Contiguous: Yes  
Permitted: Yes  
Wet space: No  
Addition: No  
Conversion: No

10 Floor 1 - Bedroom



Dimensions: 11'0" x 11'1"  
Area: 122 sq. ft  
Counted as living area: Yes

Heated: Yes  
Finished: Yes  
Enclosed: Yes  
Contiguous: Yes  
Permitted: Yes  
Wet space: No  
Addition: No  
Conversion: No

11 Floor 1 - Pantry

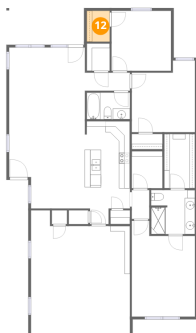


Dimensions: 4'3" x 5'1"  
Area: 21 sq. ft  
Counted as living area: Yes

Heated: Yes  
Finished: Yes  
Enclosed: Yes  
Contiguous: Yes  
Permitted: Yes  
Wet space: No  
Addition: No  
Conversion: No

# 201 Chelsea Court, Granbury, Hood County, Texas, United States, 76049

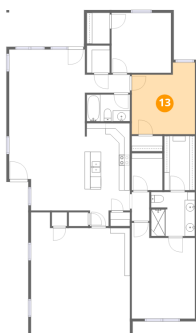
## 12 Floor 1 - W.I.C.



Dimensions: 4'3" x 5'8"  
Area: 24 sq. ft  
Counted as living area: Yes

Heated: Yes  
Finished: Yes  
Enclosed: Yes  
Contiguous: Yes  
Permitted: Yes  
Wet space: No  
Addition: No  
Conversion: No

## 13 Floor 1 - Bedroom



Dimensions: 11'8" x 13'2"  
Area: 137 sq. ft  
Counted as living area: Yes

Heated: Yes  
Finished: Yes  
Enclosed: Yes  
Contiguous: Yes  
Permitted: Yes  
Wet space: No  
Addition: No  
Conversion: No

## 14 Floor 1 - Covered Patio



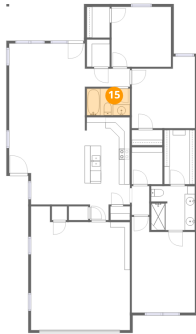
Dimensions: 14'4" x 6'9"  
Area: 97 sq. ft  
Counted as living area: No

Heated: No  
Finished: No  
Enclosed: No  
Contiguous: Yes  
Permitted: Yes  
Wet space: No  
Addition: No  
Conversion: No

201 Chelsea Court, Granbury, Hood County, Texas, United States, 76049

**15** Floor 1 - Bath

---

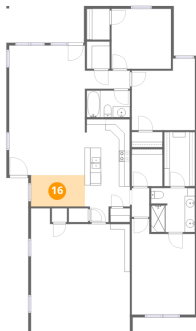


Dimensions: 8'0" x 4'11"  
Area: 39 sq. ft  
Counted as living area: Yes

Heated: Yes  
Finished: Yes  
Enclosed: Yes  
Contiguous: Yes  
Permitted: Yes  
Wet space: Yes  
Addition: No  
Conversion: No

**16** Floor 1 - Dining Area

---



Dimensions: 9'11" x 5'9"  
Area: 58 sq. ft  
Counted as living area: Yes

Heated: Yes  
Finished: Yes  
Enclosed: Yes  
Contiguous: Yes  
Permitted: Yes  
Wet space: No  
Addition: No  
Conversion: No