

Home data report

1939 Creek Hollow Lane, Valley View Acres, Hershey, Dauphin County, Pennsylvania, United States, 17033



Total Area: 2771 sq. ft

1st Floor: 543 sq. ft, 2nd Floor: 1347 sq. ft, 3rd Floor: 881 sq. ft

Excluded: Porch 31 sq. ft, Fireplace 10 sq. ft, Open to below 17 sq. ft, Walls: 215 sq. ft

Property summary

 **3** Floors

 **4** Bedrooms

 **2** Bathrooms

Home data report

**1939 Creek Hollow Lane, Valley View Acres, Hershey, Dauphin
County, Pennsylvania, United States, 17033**

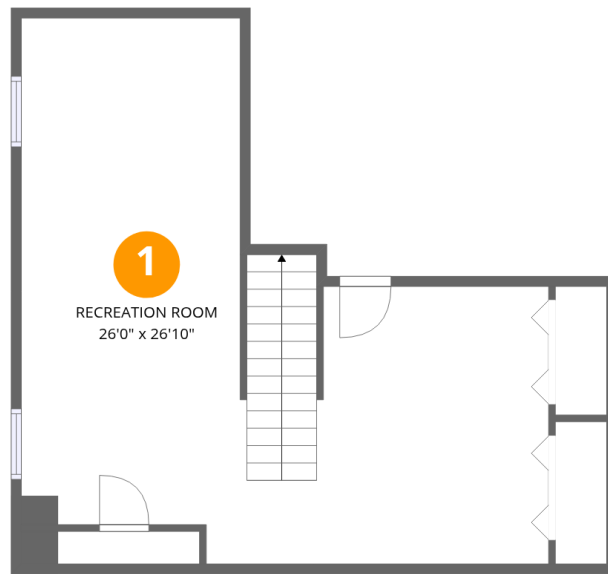


1
Half baths



1
Garages

1939 Creek Hollow Lane, Valley View Acres, Hershey, Dauphin County, Pennsylvania, United States, 17033



Room dimensions

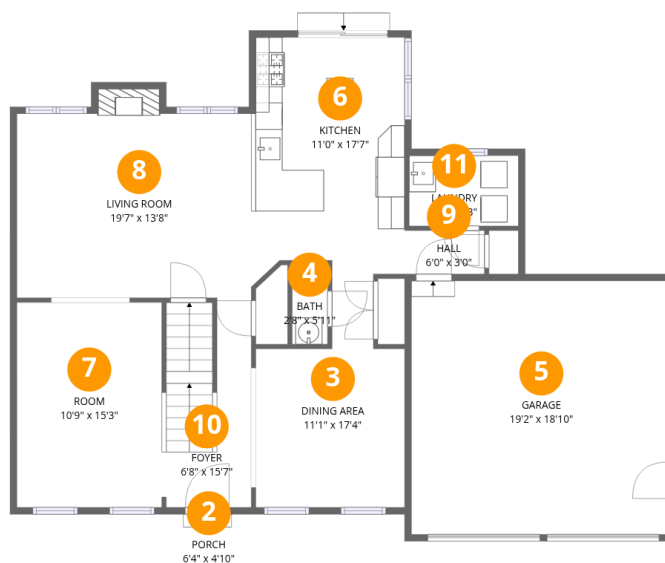
Floor 1

Total:543sqft Excluded: 0sqft

#		Dimensions	sqft	Counted as living area
1	Recreation Room	26'0" x 26'10"	698 sq. ft	Yes

Home data report

1939 Creek Hollow Lane, Valley View Acres, Hershey, Dauphin County, Pennsylvania, United States, 17033



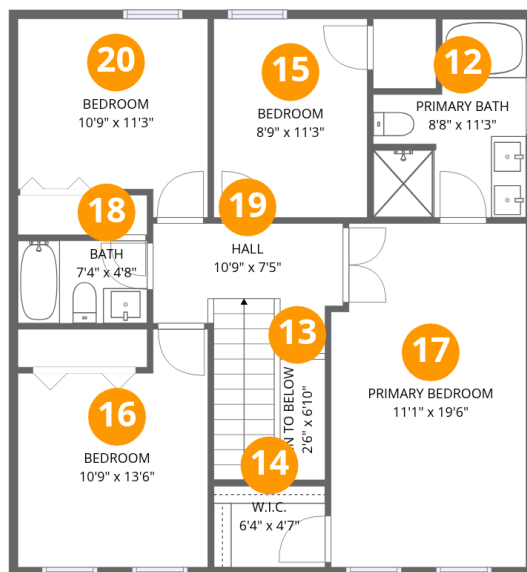
Room dimensions

Floor 2

Total:1347sqft Excluded: 41sqft

#		Dimensions	sqft	Counted as living area
2	Porch	6'4" x 4'10"	31 sq. ft	No
3	Dining Area	11'1" x 17'4"	192 sq. ft	Yes
4	Bath	2'8" x 5'11"	16 sq. ft	Yes
5	Garage	19'2" x 18'10"	362 sq. ft	Yes
6	Kitchen	11'0" x 17'7"	193 sq. ft	Yes
7	Room	10'9" x 15'3"	164 sq. ft	Yes
8	Living Room	19'7" x 13'8"	268 sq. ft	Yes
9	Hall	6'0" x 3'0"	18 sq. ft	Yes
10	Foyer	6'8" x 15'7"	104 sq. ft	Yes
11	Laundry	8'2" x 5'3"	43 sq. ft	Yes

1939 Creek Hollow Lane, Valley View Acres, Hershey, Dauphin County, Pennsylvania, United States, 17033



Room dimensions

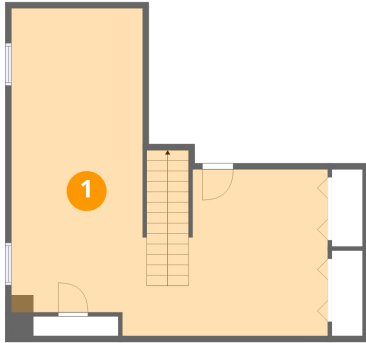
Floor 3

Total:881sqft Excluded: 17sqft

#		Dimensions	sqft	Counted as living area
12	Primary Bath	8'8" x 11'3"	98 sq. ft	Yes
13	Open To Below	2'6" x 6'10"	17 sq. ft	No
14	W.I.C.	6'4" x 4'7"	29 sq. ft	Yes
15	Bedroom	8'9" x 11'3"	98 sq. ft	Yes
16	Bedroom	10'9" x 13'6"	145 sq. ft	Yes
17	Primary Bedroom	11'1" x 19'6"	216 sq. ft	Yes
18	Bath	7'4" x 4'8"	34 sq. ft	Yes
19	Hall	10'9" x 7'5"	80 sq. ft	Yes
20	Bedroom	10'9" x 11'3"	122 sq. ft	Yes

1939 Creek Hollow Lane, Valley View Acres, Hershey, Dauphin County, Pennsylvania, United States, 17033

1 Floor 1 - Recreation Room



Dimensions: 26'0" x 26'10"
Area: 698 sq. ft
Counted as living area: Yes

Heated: Yes
Finished: Yes
Enclosed: Yes
Contiguous: Yes
Permitted: Yes
Wet space: No
Addition: No
Conversion: No

2 Floor 2 - Porch

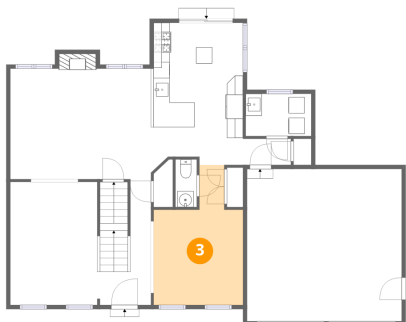


Dimensions: 6'4" x 4'10"
Area: 31 sq. ft
Counted as living area: No

Heated: No
Finished: No
Enclosed: No
Contiguous: Yes
Permitted: Yes
Wet space: No
Addition: No
Conversion: No

1939 Creek Hollow Lane, Valley View Acres, Hershey, Dauphin County, Pennsylvania, United States, 17033

3 Floor 2 - Dining Area



Dimensions: 11'1" x 17'4"
Area: 192 sq. ft
Counted as living area: Yes

Heated: Yes
Finished: Yes
Enclosed: Yes
Contiguous: Yes
Permitted: Yes
Wet space: No
Addition: No
Conversion: No

4 Floor 2 - Bath



Dimensions: 2'8" x 5'11"
Area: 16 sq. ft
Counted as living area: Yes

Heated: Yes
Finished: Yes
Enclosed: Yes
Contiguous: Yes
Permitted: Yes
Wet space: Yes
Addition: No
Conversion: No

5 Floor 2 - Garage

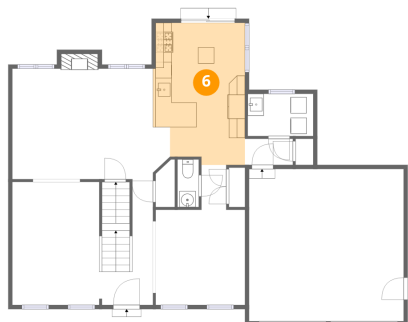


Dimensions: 19'2" x 18'10"
Area: 362 sq. ft
Counted as living area: No

Heated: No
Finished: Yes
Enclosed: Yes
Contiguous: Yes
Permitted: Yes
Wet space: No
Addition: No
Conversion: No

1939 Creek Hollow Lane, Valley View Acres, Hershey, Dauphin County, Pennsylvania, United States, 17033

6 Floor 2 - Kitchen



Dimensions: 11'0" x 17'7"
Area: 193 sq. ft
Counted as living area: Yes

Heated: Yes
Finished: Yes
Enclosed: Yes
Contiguous: Yes
Permitted: Yes
Wet space: No
Addition: No
Conversion: No

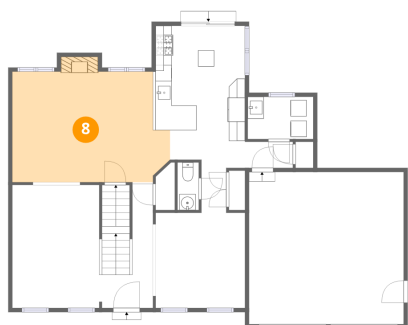
7 Floor 2 - Room



Dimensions: 10'9" x 15'3"
Area: 164 sq. ft
Counted as living area: Yes

Heated: Yes
Finished: Yes
Enclosed: Yes
Contiguous: Yes
Permitted: Yes
Wet space: No
Addition: No
Conversion: No

8 Floor 2 - Living Room

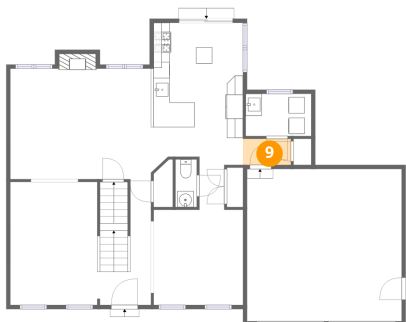


Dimensions: 19'7" x 13'8"
Area: 268 sq. ft
Counted as living area: Yes

Heated: Yes
Finished: Yes
Enclosed: Yes
Contiguous: Yes
Permitted: Yes
Wet space: No
Addition: No
Conversion: No

1939 Creek Hollow Lane, Valley View Acres, Hershey, Dauphin County, Pennsylvania, United States, 17033

9 Floor 2 - Hall



Dimensions: 6'0" x 3'0"
Area: 18 sq. ft
Counted as living area: Yes

Heated: Yes
Finished: Yes
Enclosed: Yes
Contiguous: Yes
Permitted: Yes
Wet space: No
Addition: No
Conversion: No

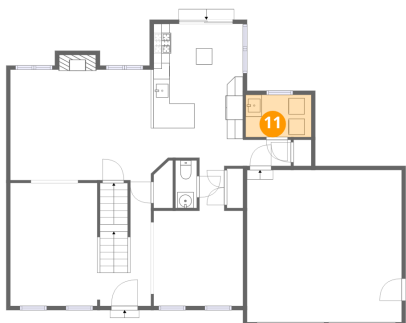
10 Floor 2 - Foyer



Dimensions: 6'8" x 15'7"
Area: 104 sq. ft
Counted as living area: Yes

Heated: Yes
Finished: Yes
Enclosed: Yes
Contiguous: Yes
Permitted: Yes
Wet space: No
Addition: No
Conversion: No

11 Floor 2 - Laundry

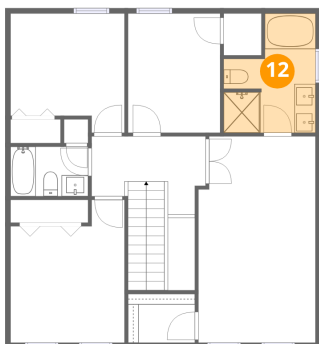


Dimensions: 8'2" x 5'3"
Area: 43 sq. ft
Counted as living area: Yes

Heated: Yes
Finished: Yes
Enclosed: Yes
Contiguous: Yes
Permitted: Yes
Wet space: No
Addition: No
Conversion: No

1939 Creek Hollow Lane, Valley View Acres, Hershey, Dauphin County, Pennsylvania, United States, 17033

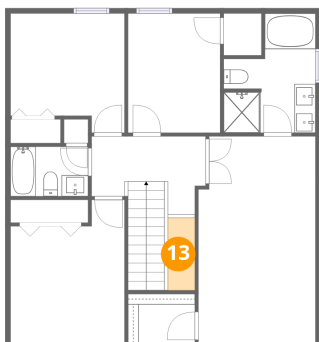
12 Floor 3 - Primary Bath



Dimensions: 8'8" x 11'3"
Area: 98 sq. ft
Counted as living area: Yes

Heated: Yes
Finished: Yes
Enclosed: Yes
Contiguous: Yes
Permitted: Yes
Wet space: Yes
Addition: No
Conversion: No

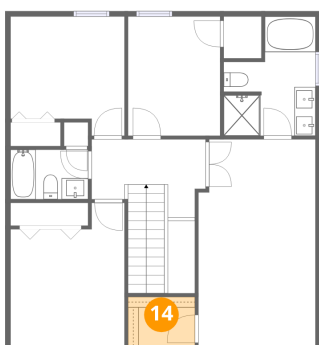
13 Floor 3 - Open To Below



Dimensions: 2'6" x 6'10"
Area: 17 sq. ft
Counted as living area: No

Heated: No
Finished: No
Enclosed: No
Contiguous: Yes
Permitted: No
Wet space: No
Addition: No
Conversion: No

14 Floor 3 - W.I.C.

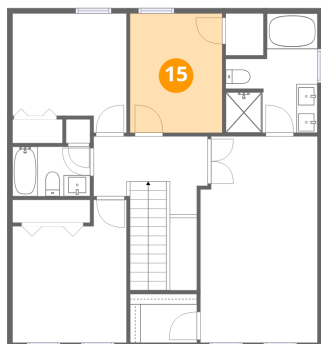


Dimensions: 6'4" x 4'7"
Area: 29 sq. ft
Counted as living area: Yes

Heated: Yes
Finished: Yes
Enclosed: Yes
Contiguous: Yes
Permitted: Yes
Wet space: No
Addition: No
Conversion: No

1939 Creek Hollow Lane, Valley View Acres, Hershey, Dauphin County, Pennsylvania, United States, 17033

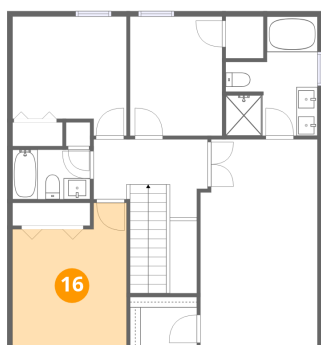
15 Floor 3 - Bedroom



Dimensions: 8'9" x 11'3"
Area: 98 sq. ft
Counted as living area: Yes

Heated: Yes
Finished: Yes
Enclosed: Yes
Contiguous: Yes
Permitted: Yes
Wet space: No
Addition: No
Conversion: No

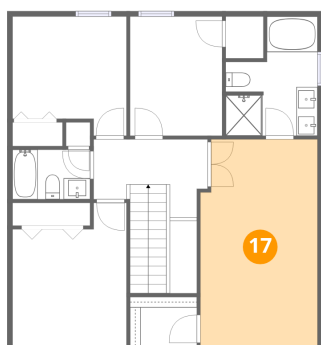
16 Floor 3 - Bedroom



Dimensions: 10'9" x 13'6"
Area: 145 sq. ft
Counted as living area: Yes

Heated: Yes
Finished: Yes
Enclosed: Yes
Contiguous: Yes
Permitted: Yes
Wet space: No
Addition: No
Conversion: No

17 Floor 3 - Primary Bedroom

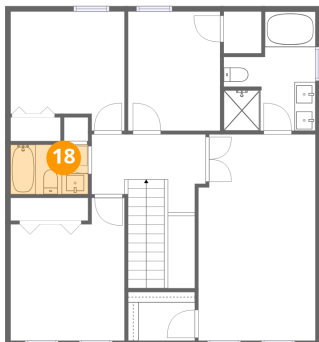


Dimensions: 11'1" x 19'6"
Area: 216 sq. ft
Counted as living area: Yes

Heated: Yes
Finished: Yes
Enclosed: Yes
Contiguous: Yes
Permitted: Yes
Wet space: No
Addition: No
Conversion: No

1939 Creek Hollow Lane, Valley View Acres, Hershey, Dauphin County, Pennsylvania, United States, 17033

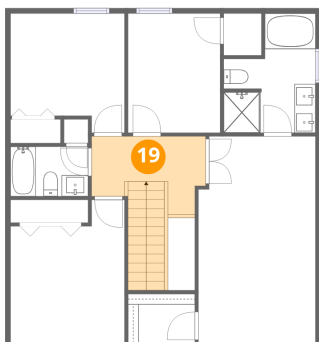
18 Floor 3 - Bath



Dimensions: 7'4" x 4'8"
Area: 34 sq. ft
Counted as living area: Yes

Heated: Yes
Finished: Yes
Enclosed: Yes
Contiguous: Yes
Permitted: Yes
Wet space: Yes
Addition: No
Conversion: No

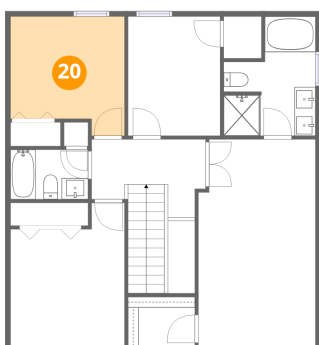
19 Floor 3 - Hall



Dimensions: 10'9" x 7'5"
Area: 80 sq. ft
Counted as living area: Yes

Heated: Yes
Finished: Yes
Enclosed: Yes
Contiguous: Yes
Permitted: Yes
Wet space: No
Addition: No
Conversion: No

20 Floor 3 - Bedroom



Dimensions: 10'9" x 11'3"
Area: 122 sq. ft
Counted as living area: Yes

Heated: Yes
Finished: Yes
Enclosed: Yes
Contiguous: Yes
Permitted: Yes
Wet space: No
Addition: No
Conversion: No