

Basement
33'11" x 25'7"

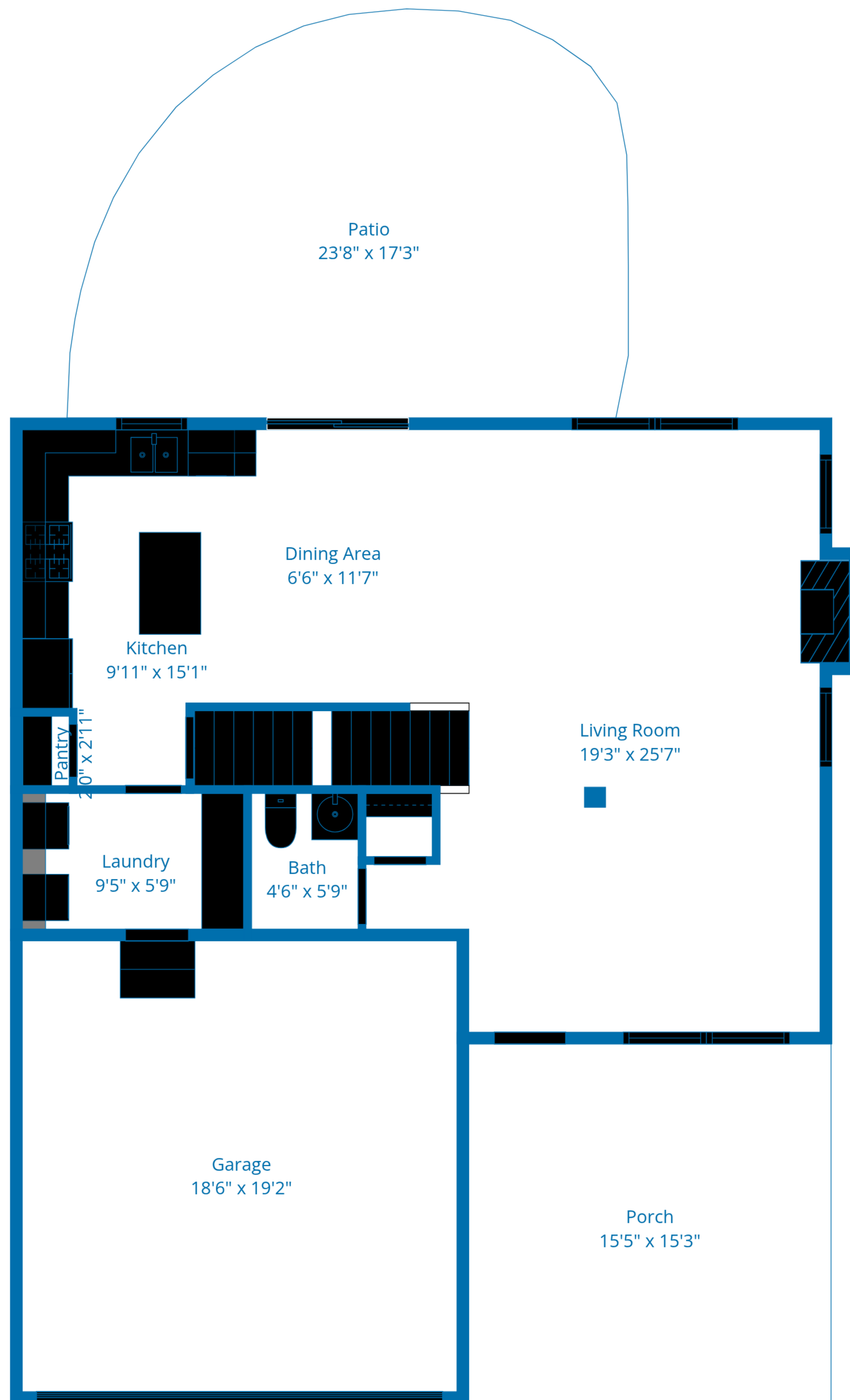
TOTAL: 1736 sq. ft

Basement: 0 sq. ft, 1st floor: 787 sq. ft, 2nd floor: 949 sq. ft
EXCLUDED AREAS: BASEMENT: 784 sq. ft, GARAGE: 354 sq. ft, PORCH: 235 sq. ft,
PATIO: 351 sq. ft, FIREPLACE: 7 sq. ft, WALLS: 208 sq. ft



Floor Plans Are Highly Accurate But Dimensions Are Not Guaranteed.



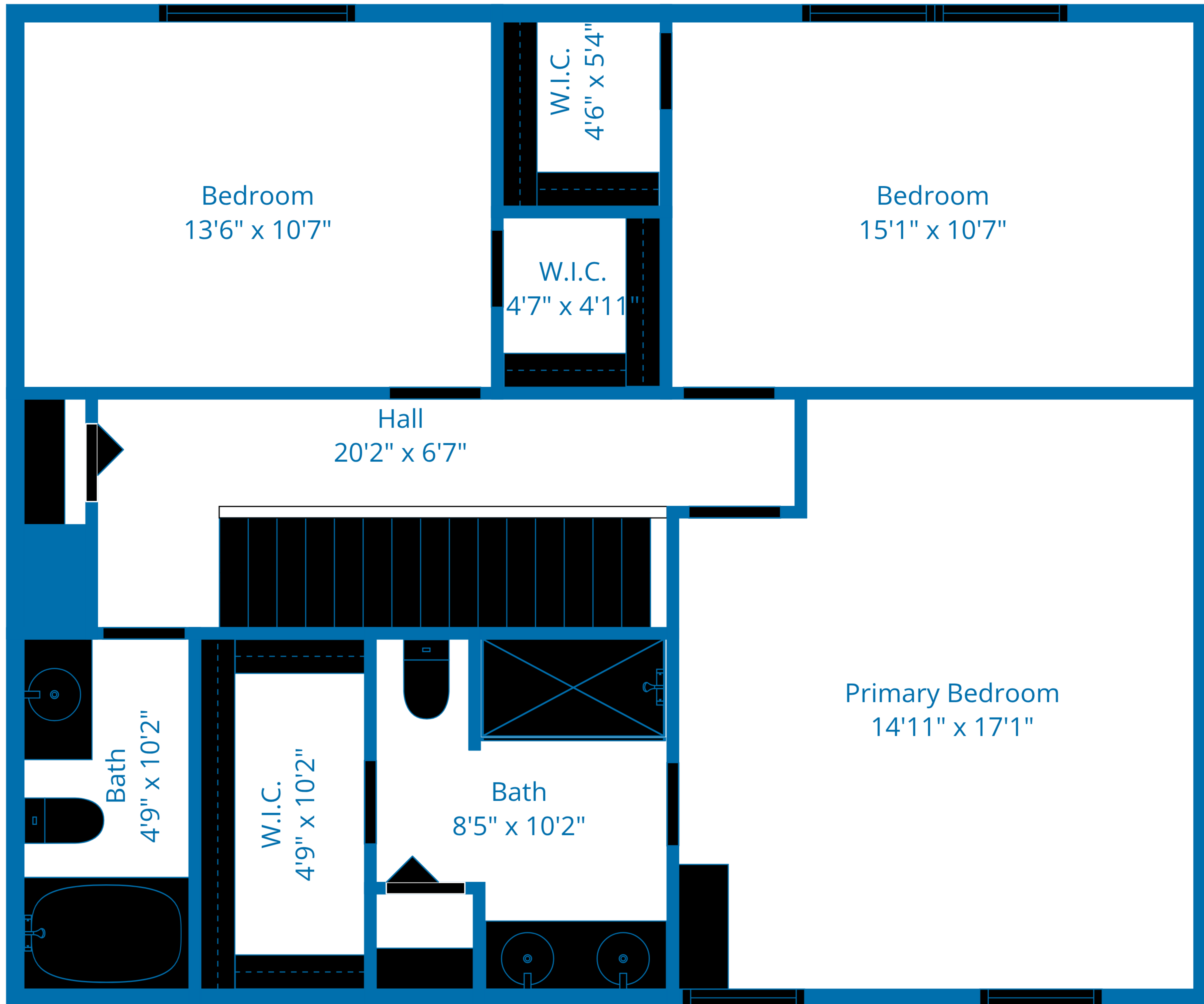


TOTAL: 1736 sq. ft

Basement: 0 sq. ft, 1st floor: 787 sq. ft, 2nd floor: 949 sq. ft
 EXCLUDED AREAS: BASEMENT: 784 sq. ft, GARAGE: 354 sq. ft, PORCH: 235 sq. ft,
 PATIO: 351 sq. ft, FIREPLACE: 7 sq. ft, WALLS: 208 sq. ft

Floor Plans Are Highly Accurate But Dimensions Are Not Guaranteed.





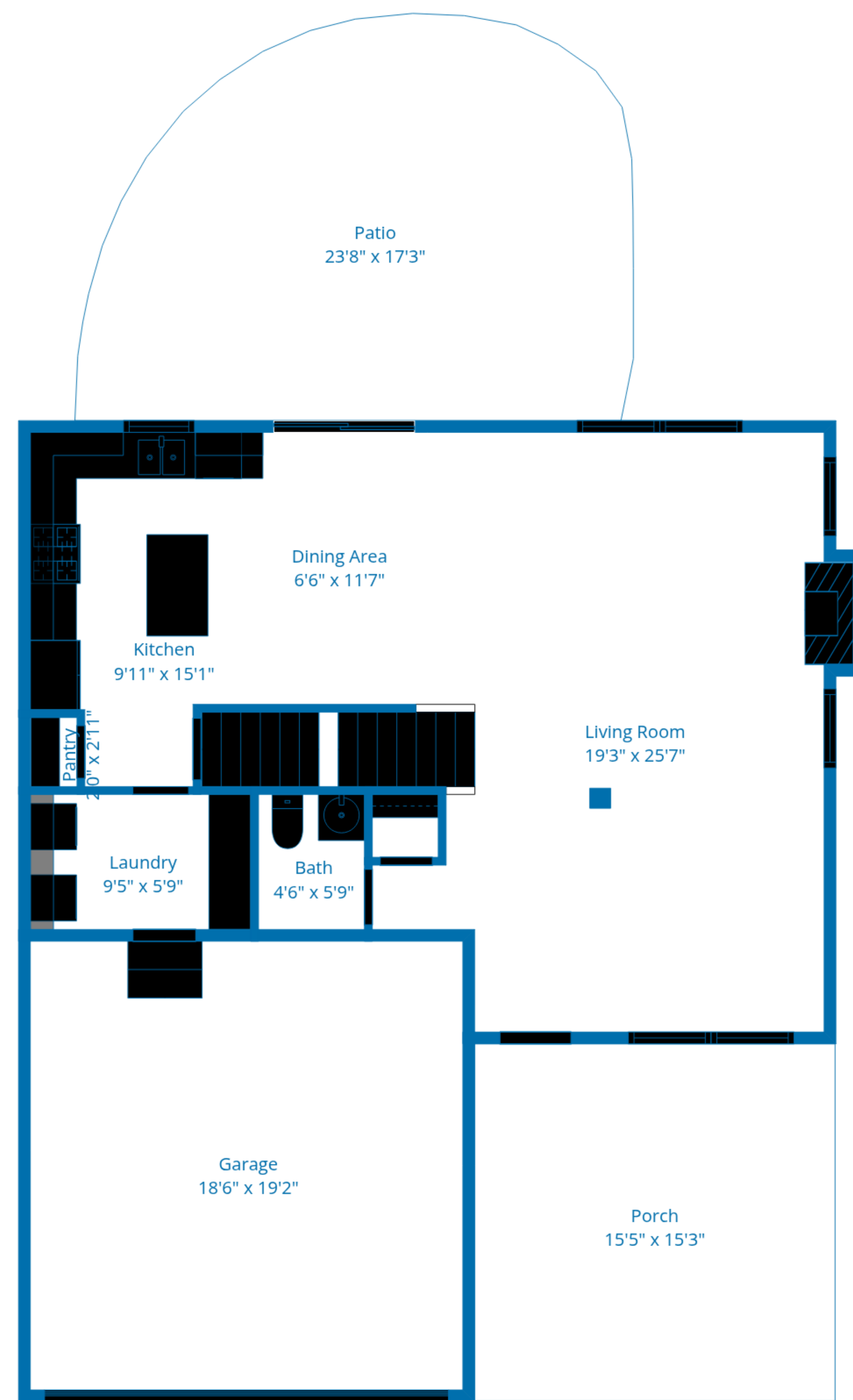
TOTAL: 1736 sq. ft

Basement: 0 sq. ft, 1st floor: 787 sq. ft, 2nd floor: 949 sq. ft
 EXCLUDED AREAS: BASEMENT: 784 sq. ft, GARAGE: 354 sq. ft, PORCH: 235 sq. ft,
 PATIO: 351 sq. ft, FIREPLACE: 7 sq. ft, WALLS: 208 sq. ft

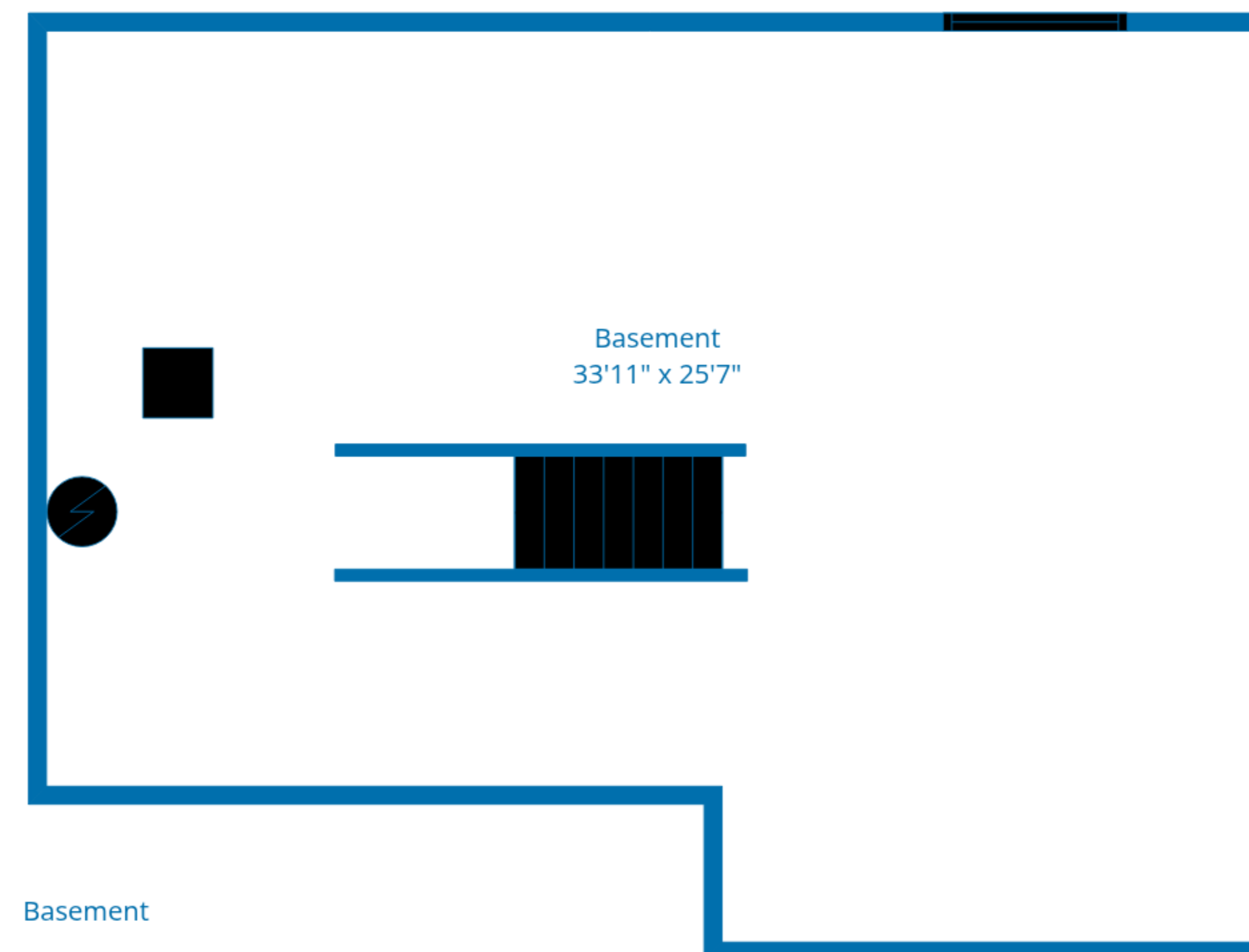


Floor Plans Are Highly Accurate But Dimensions Are Not Guaranteed.

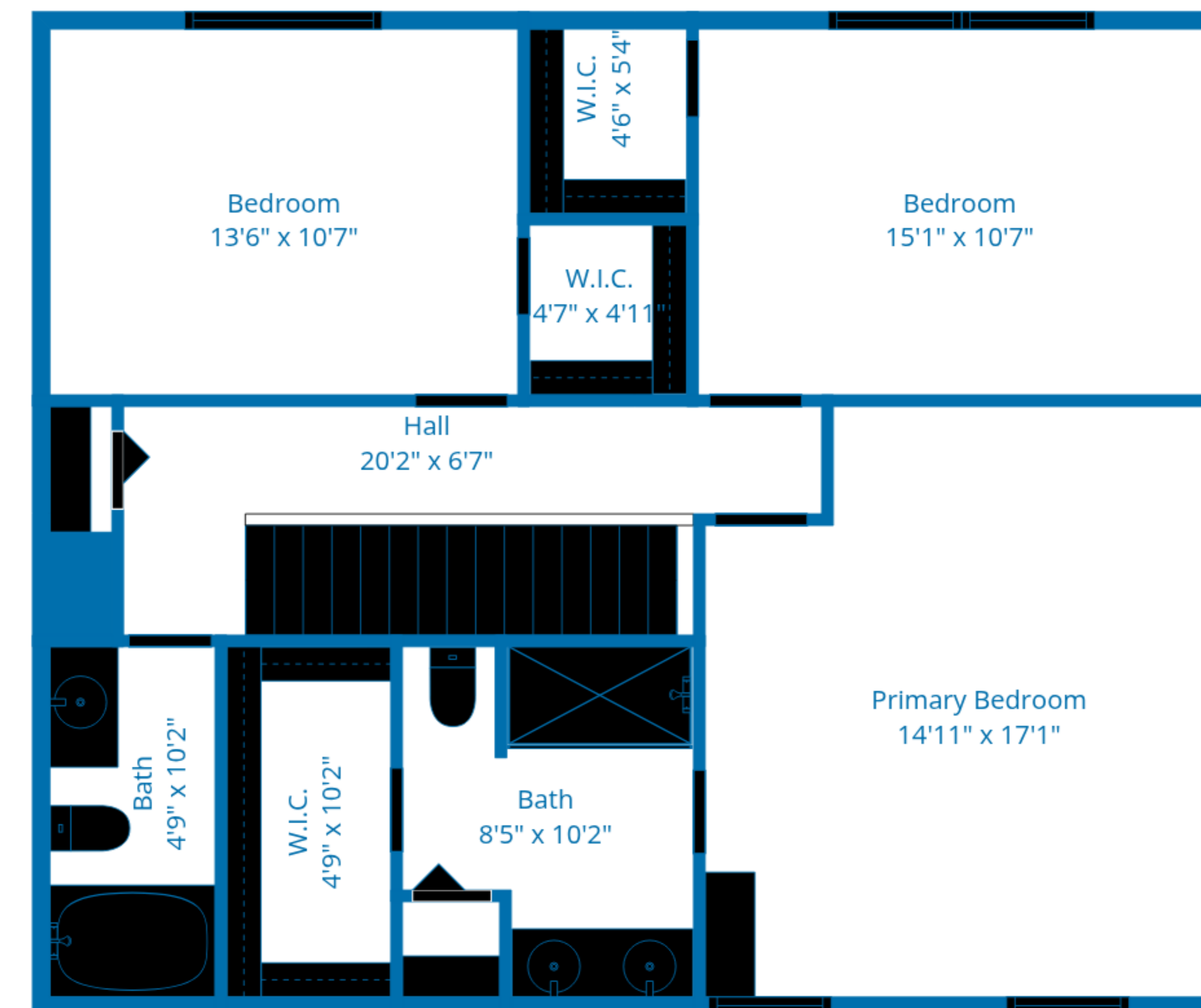




1st Floor



Basement



2nd Floor

TOTAL: 1736 sq. ft

Basement: 0 sq. ft, 1st floor: 787 sq. ft, 2nd floor: 949 sq. ft

EXCLUDED AREAS: BASEMENT: 784 sq. ft, GARAGE: 354 sq. ft, PORCH: 235 sq. ft,

PATIO: 351 sq. ft, FIREPLACE: 7 sq. ft, WALLS: 208 sq. ft

Floor Plans Are Highly Accurate But Dimensions Are Not Guaranteed.

