



Home data report

**3814 Traditions Boulevard, Longview Estates, St. Charles, Kane  
County, Illinois, United States, 60175**



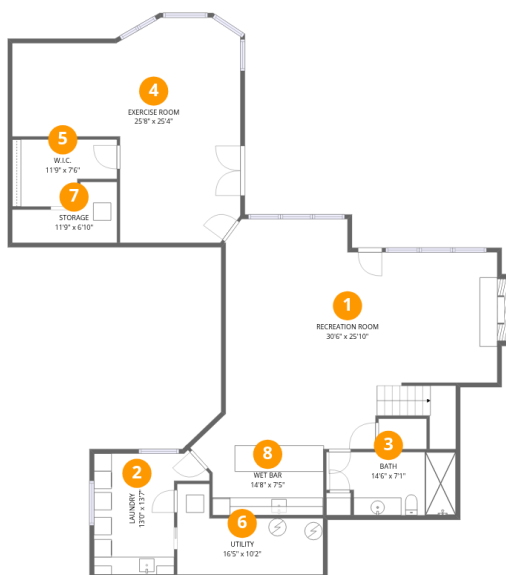
**2**  
Half baths



**2**  
Garages

## Home data report

**3814 Traditions Boulevard, Longview Estates, St. Charles, Kane County, Illinois, United States, 60175**



## Room dimensions

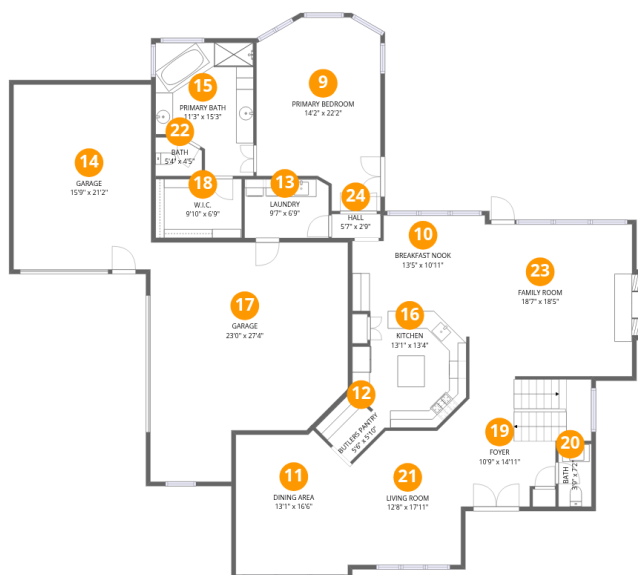
Floor 1

Total:1599sqft Excluded: 185sqft

#		Dimensions	sqft	Counted as living area
1	Recreation Room	30'6" x 25'10"	681 sq. ft	Yes
2	Laundry	13'0" x 13'7"	133 sq. ft	Yes
3	Bath	14'6" x 7'1"	95 sq. ft	Yes
4	Exercise Room	25'8" x 25'4"	457 sq. ft	Yes
5	W.I.C.	11'9" x 7'6"	75 sq. ft	Yes
6	Utility	16'5" x 10'2"	118 sq. ft	No
7	Storage	11'9" x 6'10"	57 sq. ft	No
8	Wet Bar	14'8" x 7'5"	96 sq. ft	Yes

Home data report

3814 Traditions Boulevard, Longview Estates, St. Charles, Kane County, Illinois, United States, 60175



Room dimensions

Floor 2

Total:1888sqft

Excluded: 871sqft

#		Dimensions	sqft	Counted as living area
9	Primary Bedroom	14'2" x 22'2"	269 sq. ft	Yes
10	Breakfast Nook	13'5" x 10'11"	136 sq. ft	Yes
11	Dining Area	13'1" x 16'6"	202 sq. ft	Yes
12	Butlers Pantry	5'6" x 5'10"	33 sq. ft	Yes
13	Laundry	9'7" x 6'9"	64 sq. ft	Yes
14	Garage	15'9" x 21'2"	332 sq. ft	No
15	Primary Bath	11'3" x 15'3"	147 sq. ft	Yes
16	Kitchen	13'1" x 13'4"	152 sq. ft	Yes
17	Garage	23'0" x 27'4"	529 sq. ft	No
18	W.I.C.	9'10" x 6'9"	67 sq. ft	Yes
19	Foyer	10'9" x 14'11"	179 sq. ft	Yes

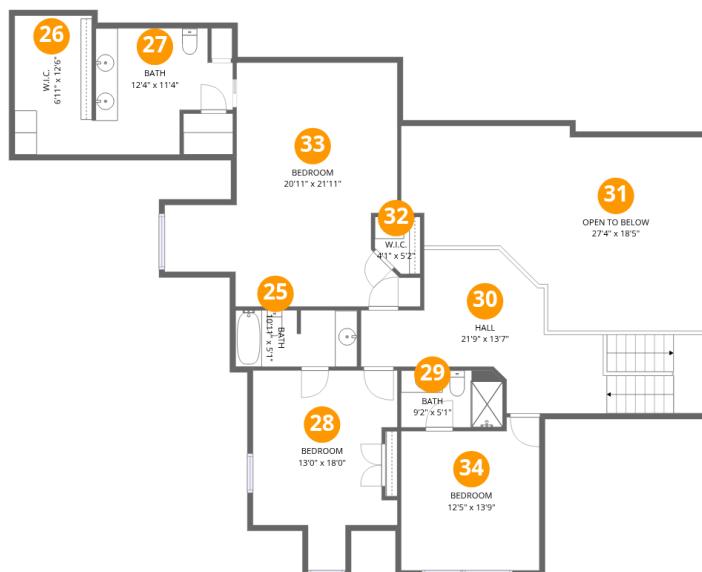
Home data report

**3814 Traditions Boulevard, Longview Estates, St. Charles, Kane County, Illinois, United States, 60175**

#		Dimensions	sqft	Counted as living area
20	Bath	3'9" x 7'2"	27 sq. ft	Yes
21	Living Room	12'8" x 17'11"	190 sq. ft	Yes
22	Bath	5'4" x 4'5"	21 sq. ft	Yes
23	Family Room	18'7" x 18'5"	334 sq. ft	Yes
24	Hall	5'7" x 2'9"	15 sq. ft	Yes

Home data report

3814 Traditions Boulevard, Longview Estates, St. Charles, Kane County, Illinois, United States, 60175



Room dimensions

Floor 3

Total:1355sqft

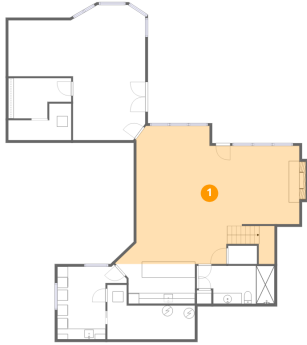
Excluded: 394sqft

#		Dimensions	sqft	Counted as living area
25	Bath	10'11" x 5'1"	55 sq. ft	Yes
26	W.I.C.	6'11" x 12'6"	87 sq. ft	Yes
27	Bath	12'4" x 11'4"	115 sq. ft	Yes
28	Bedroom	13'0" x 18'0"	185 sq. ft	Yes
29	Bath	9'2" x 5'1"	46 sq. ft	Yes
30	Hall	21'9" x 13'7"	262 sq. ft	Yes
31	Open To Below	27'4" x 18'5"	394 sq. ft	No
32	W.I.C.	4'1" x 5'2"	18 sq. ft	Yes
33	Bedroom	20'11" x 21'11"	351 sq. ft	Yes
34	Bedroom	12'5" x 13'9"	159 sq. ft	Yes

**3814 Traditions Boulevard, Longview Estates, St. Charles, Kane County, Illinois, United States, 60175**

**1 Floor 1 - Recreation Room**

---

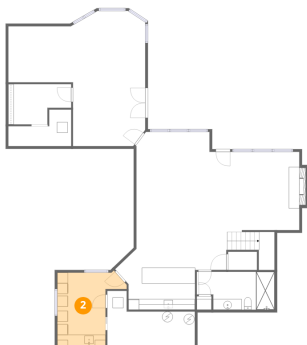


**Dimensions:** 30'6" x 25'10"  
**Area:** 681 sq. ft  
**Counted as living area:** Yes

**Heated:** Yes  
**Finished:** Yes  
**Enclosed:** Yes  
**Contiguous:** Yes  
**Permitted:** Yes  
**Wet space:** No  
**Addition:** No  
**Conversion:** No

**2 Floor 1 - Laundry**

---



**Dimensions:** 13'0" x 13'7"  
**Area:** 133 sq. ft  
**Counted as living area:** Yes

**Heated:** Yes  
**Finished:** Yes  
**Enclosed:** Yes  
**Contiguous:** Yes  
**Permitted:** Yes  
**Wet space:** No  
**Addition:** No  
**Conversion:** No

# 3814 Traditions Boulevard, Longview Estates, St. Charles, Kane County, Illinois, United States, 60175

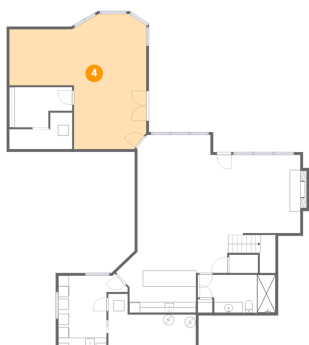
## 3 Floor 1 - Bath



Dimensions: 14'6" x 7'1"  
Area: 95 sq. ft  
Counted as living area: Yes

Heated: Yes  
Finished: Yes  
Enclosed: Yes  
Contiguous: Yes  
Permitted: Yes  
Wet space: Yes  
Addition: No  
Conversion: No

## 4 Floor 1 - Exercise Room



Dimensions: 25'8" x 25'4"  
Area: 457 sq. ft  
Counted as living area: Yes

Heated: Yes  
Finished: Yes  
Enclosed: Yes  
Contiguous: Yes  
Permitted: Yes  
Wet space: No  
Addition: No  
Conversion: No

## 5 Floor 1 - W.I.C.



Dimensions: 11'9" x 7'6"  
Area: 75 sq. ft  
Counted as living area: Yes

Heated: Yes  
Finished: Yes  
Enclosed: Yes  
Contiguous: Yes  
Permitted: Yes  
Wet space: No  
Addition: No  
Conversion: No

# 3814 Traditions Boulevard, Longview Estates, St. Charles, Kane County, Illinois, United States, 60175

## 6 Floor 1 - Utility



Dimensions: 16'5" x 10'2"  
Area: 118 sq. ft  
Counted as living area: No

Heated: Yes  
Finished: No  
Enclosed: Yes  
Contiguous: Yes  
Permitted: Yes  
Wet space: No  
Addition: No  
Conversion: No

## 7 Floor 1 - Storage



Dimensions: 11'9" x 6'10"  
Area: 57 sq. ft  
Counted as living area: No

Heated: No  
Finished: No  
Enclosed: No  
Contiguous: Yes  
Permitted: Yes  
Wet space: No  
Addition: No  
Conversion: No

## 8 Floor 1 - Wet Bar

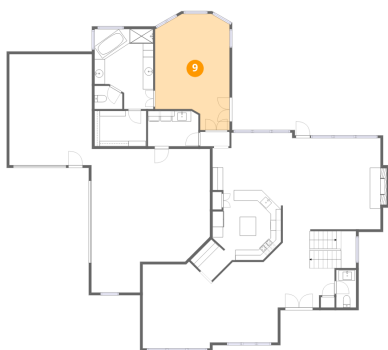


Dimensions: 14'8" x 7'5"  
Area: 96 sq. ft  
Counted as living area: Yes

Heated: Yes  
Finished: Yes  
Enclosed: Yes  
Contiguous: Yes  
Permitted: Yes  
Wet space: No  
Addition: No  
Conversion: No

3814 Traditions Boulevard, Longview Estates, St. Charles, Kane County, Illinois, United States, 60175

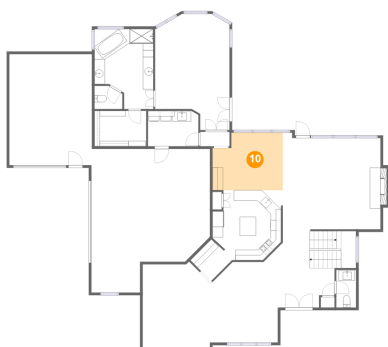
9 Floor 2 - Primary Bedroom



Dimensions: 14'2" x 22'2"  
Area: 269 sq. ft  
Counted as living area: Yes

Heated: Yes  
Finished: Yes  
Enclosed: Yes  
Contiguous: Yes  
Permitted: Yes  
Wet space: No  
Addition: No  
Conversion: No

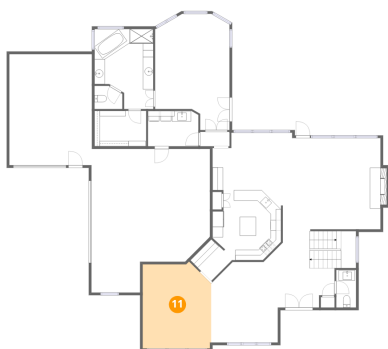
10 Floor 2 - Breakfast Nook



Dimensions: 13'5" x 10'11"  
Area: 136 sq. ft  
Counted as living area: Yes

Heated: Yes  
Finished: Yes  
Enclosed: Yes  
Contiguous: Yes  
Permitted: Yes  
Wet space: No  
Addition: No  
Conversion: No

11 Floor 2 - Dining Area

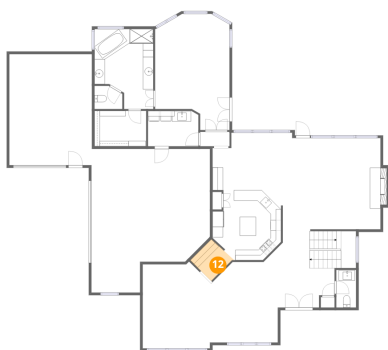


Dimensions: 13'1" x 16'6"  
Area: 202 sq. ft  
Counted as living area: Yes

Heated: Yes  
Finished: Yes  
Enclosed: Yes  
Contiguous: Yes  
Permitted: Yes  
Wet space: No  
Addition: No  
Conversion: No

3814 Traditions Boulevard, Longview Estates, St. Charles, Kane County, Illinois, United States, 60175

**12** Floor 2 - Butlers Pantry



Dimensions: 5'6" x 5'10"  
Area: 33 sq. ft  
Counted as living area: Yes

Heated: Yes  
Finished: Yes  
Enclosed: Yes  
Contiguous: Yes  
Permitted: Yes  
Wet space: No  
Addition: No  
Conversion: No

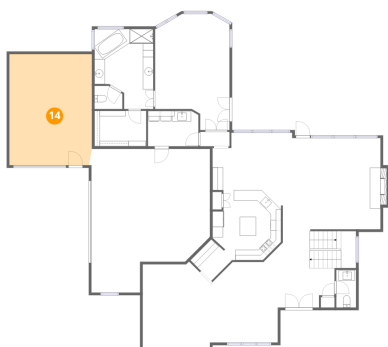
**13** Floor 2 - Laundry



Dimensions: 9'7" x 6'9"  
Area: 64 sq. ft  
Counted as living area: Yes

Heated: Yes  
Finished: Yes  
Enclosed: Yes  
Contiguous: Yes  
Permitted: Yes  
Wet space: No  
Addition: No  
Conversion: No

**14** Floor 2 - Garage

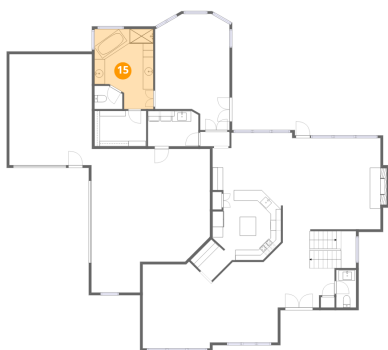


Dimensions: 15'9" x 21'2"  
Area: 332 sq. ft  
Counted as living area: No

Heated: No  
Finished: No  
Enclosed: Yes  
Contiguous: Yes  
Permitted: Yes  
Wet space: No  
Addition: No  
Conversion: No

3814 Traditions Boulevard, Longview Estates, St. Charles, Kane County, Illinois, United States, 60175

**15** Floor 2 - Primary Bath



Dimensions: 11'3" x 15'3"  
Area: 147 sq. ft  
Counted as living area: Yes

Heated: Yes  
Finished: Yes  
Enclosed: Yes  
Contiguous: Yes  
Permitted: Yes  
Wet space: Yes  
Addition: No  
Conversion: No

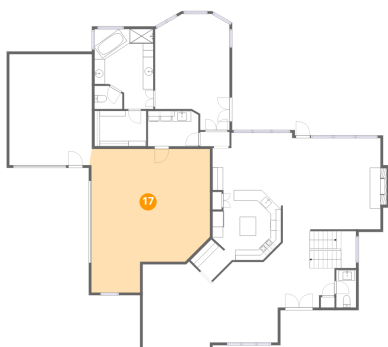
**16** Floor 2 - Kitchen



Dimensions: 13'1" x 13'4"  
Area: 152 sq. ft  
Counted as living area: Yes

Heated: Yes  
Finished: Yes  
Enclosed: Yes  
Contiguous: Yes  
Permitted: Yes  
Wet space: No  
Addition: No  
Conversion: No

**17** Floor 2 - Garage

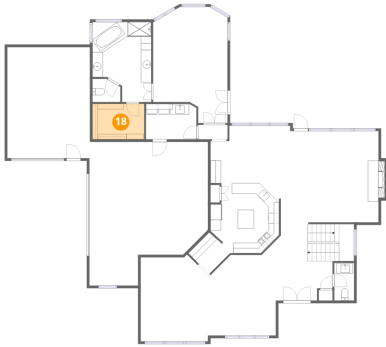


Dimensions: 23'0" x 27'4"  
Area: 529 sq. ft  
Counted as living area: No

Heated: No  
Finished: No  
Enclosed: Yes  
Contiguous: Yes  
Permitted: Yes  
Wet space: No  
Addition: No  
Conversion: No

3814 Traditions Boulevard, Longview Estates, St. Charles, Kane County, Illinois, United States, 60175

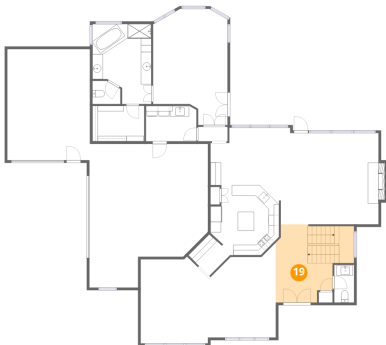
**18** Floor 2 - W.I.C.



Dimensions: 9'10" x 6'9"  
Area: 67 sq. ft  
Counted as living area: Yes

Heated: Yes  
Finished: Yes  
Enclosed: Yes  
Contiguous: Yes  
Permitted: Yes  
Wet space: No  
Addition: No  
Conversion: No

**19** Floor 2 - Foyer



Dimensions: 10'9" x 14'11"  
Area: 179 sq. ft  
Counted as living area: Yes

Heated: Yes  
Finished: Yes  
Enclosed: Yes  
Contiguous: Yes  
Permitted: Yes  
Wet space: No  
Addition: No  
Conversion: No

**20** Floor 2 - Bath

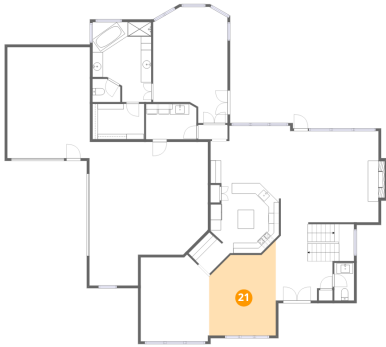


Dimensions: 3'9" x 7'2"  
Area: 27 sq. ft  
Counted as living area: Yes

Heated: Yes  
Finished: Yes  
Enclosed: Yes  
Contiguous: Yes  
Permitted: Yes  
Wet space: Yes  
Addition: No  
Conversion: No

3814 Traditions Boulevard, Longview Estates, St. Charles, Kane County, Illinois, United States, 60175

**21** Floor 2 - Living Room



Dimensions: 12'8" x 17'11"  
Area: 190 sq. ft  
Counted as living area: Yes

Heated: Yes  
Finished: Yes  
Enclosed: Yes  
Contiguous: Yes  
Permitted: Yes  
Wet space: No  
Addition: No  
Conversion: No

**22** Floor 2 - Bath



Dimensions: 5'4" x 4'5"  
Area: 21 sq. ft  
Counted as living area: Yes

Heated: Yes  
Finished: Yes  
Enclosed: Yes  
Contiguous: Yes  
Permitted: Yes  
Wet space: Yes  
Addition: No  
Conversion: No

**23** Floor 2 - Family Room

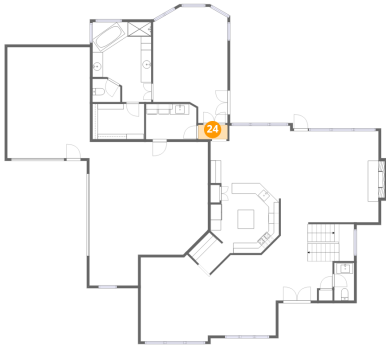


Dimensions: 18'7" x 18'5"  
Area: 334 sq. ft  
Counted as living area: Yes

Heated: Yes  
Finished: Yes  
Enclosed: Yes  
Contiguous: Yes  
Permitted: Yes  
Wet space: No  
Addition: No  
Conversion: No

3814 Traditions Boulevard, Longview Estates, St. Charles, Kane County, Illinois, United States, 60175

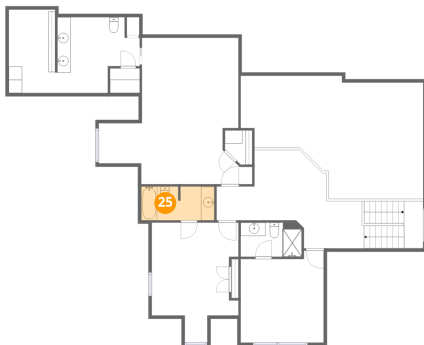
**24** Floor 2 - Hall



Dimensions: 5'7" x 2'9"  
Area: 15 sq. ft  
Counted as living area: Yes

Heated: Yes  
Finished: Yes  
Enclosed: Yes  
Contiguous: Yes  
Permitted: Yes  
Wet space: No  
Addition: No  
Conversion: No

**25** Floor 3 - Bath



Dimensions: 10'11" x 5'1"  
Area: 55 sq. ft  
Counted as living area: Yes

Heated: Yes  
Finished: Yes  
Enclosed: Yes  
Contiguous: Yes  
Permitted: Yes  
Wet space: Yes  
Addition: No  
Conversion: No

**26** Floor 3 - W.I.C.

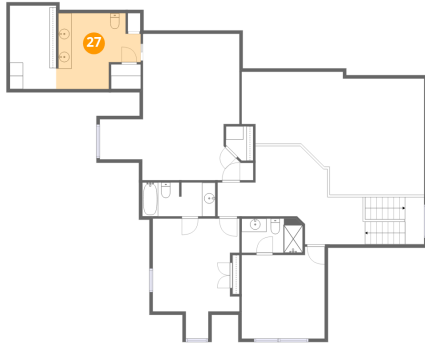


Dimensions: 6'11" x 12'6"  
Area: 87 sq. ft  
Counted as living area: Yes

Heated: Yes  
Finished: Yes  
Enclosed: Yes  
Contiguous: Yes  
Permitted: Yes  
Wet space: No  
Addition: No  
Conversion: No

3814 Traditions Boulevard, Longview Estates, St. Charles, Kane County, Illinois, United States, 60175

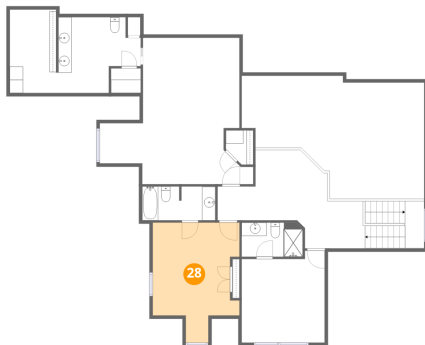
**27** Floor 3 - Bath



Dimensions: 12'4" x 11'4"  
Area: 115 sq. ft  
Counted as living area: Yes

Heated: Yes  
Finished: Yes  
Enclosed: Yes  
Contiguous: Yes  
Permitted: Yes  
Wet space: Yes  
Addition: No  
Conversion: No

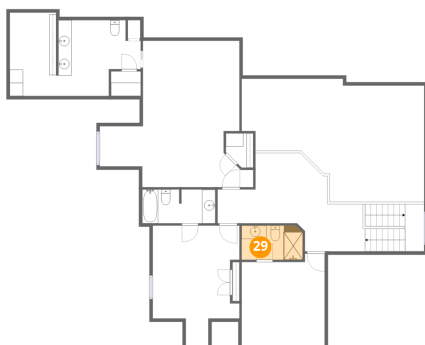
**28** Floor 3 - Bedroom



Dimensions: 13'0" x 18'0"  
Area: 185 sq. ft  
Counted as living area: Yes

Heated: Yes  
Finished: Yes  
Enclosed: Yes  
Contiguous: Yes  
Permitted: Yes  
Wet space: No  
Addition: No  
Conversion: No

**29** Floor 3 - Bath

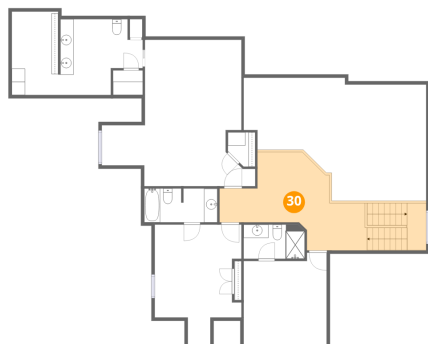


Dimensions: 9'2" x 5'1"  
Area: 46 sq. ft  
Counted as living area: Yes

Heated: Yes  
Finished: Yes  
Enclosed: Yes  
Contiguous: Yes  
Permitted: Yes  
Wet space: Yes  
Addition: No  
Conversion: No

3814 Traditions Boulevard, Longview Estates, St. Charles, Kane County, Illinois, United States, 60175

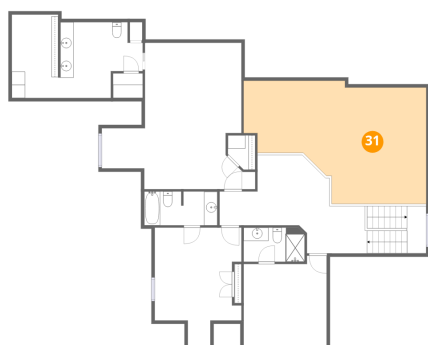
**30** Floor 3 - Hall



Dimensions: 21'9" x 13'7"  
Area: 262 sq. ft  
Counted as living area: Yes

Heated: Yes  
Finished: Yes  
Enclosed: Yes  
Contiguous: Yes  
Permitted: Yes  
Wet space: No  
Addition: No  
Conversion: No

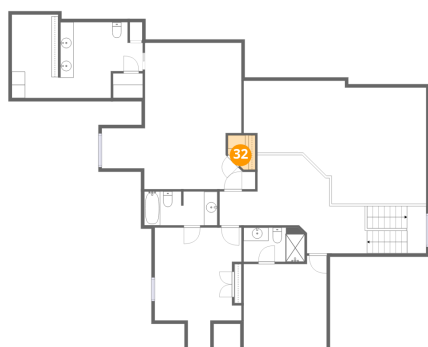
**31** Floor 3 - Open To Below



Dimensions: 27'4" x 18'5"  
Area: 394 sq. ft  
Counted as living area: No

Heated: No  
Finished: No  
Enclosed: No  
Contiguous: Yes  
Permitted: No  
Wet space: No  
Addition: No  
Conversion: No

**32** Floor 3 - W.I.C.

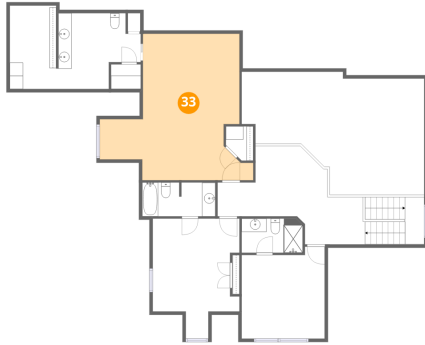


Dimensions: 4'1" x 5'2"  
Area: 18 sq. ft  
Counted as living area: Yes

Heated: Yes  
Finished: Yes  
Enclosed: Yes  
Contiguous: Yes  
Permitted: Yes  
Wet space: No  
Addition: No  
Conversion: No

**3814 Traditions Boulevard, Longview Estates, St. Charles, Kane County, Illinois, United States, 60175**

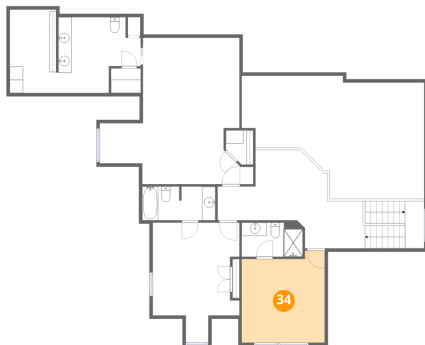
**33 Floor 3 - Bedroom**



**Dimensions:** 20'11" x 21'11"  
**Area:** 351 sq. ft  
**Counted as living area:** Yes

**Heated:** Yes  
**Finished:** Yes  
**Enclosed:** Yes  
**Contiguous:** Yes  
**Permitted:** Yes  
**Wet space:** No  
**Addition:** No  
**Conversion:** No

**34 Floor 3 - Bedroom**



**Dimensions:** 12'5" x 13'9"  
**Area:** 159 sq. ft  
**Counted as living area:** Yes

**Heated:** Yes  
**Finished:** Yes  
**Enclosed:** Yes  
**Contiguous:** Yes  
**Permitted:** Yes  
**Wet space:** No  
**Addition:** No  
**Conversion:** No