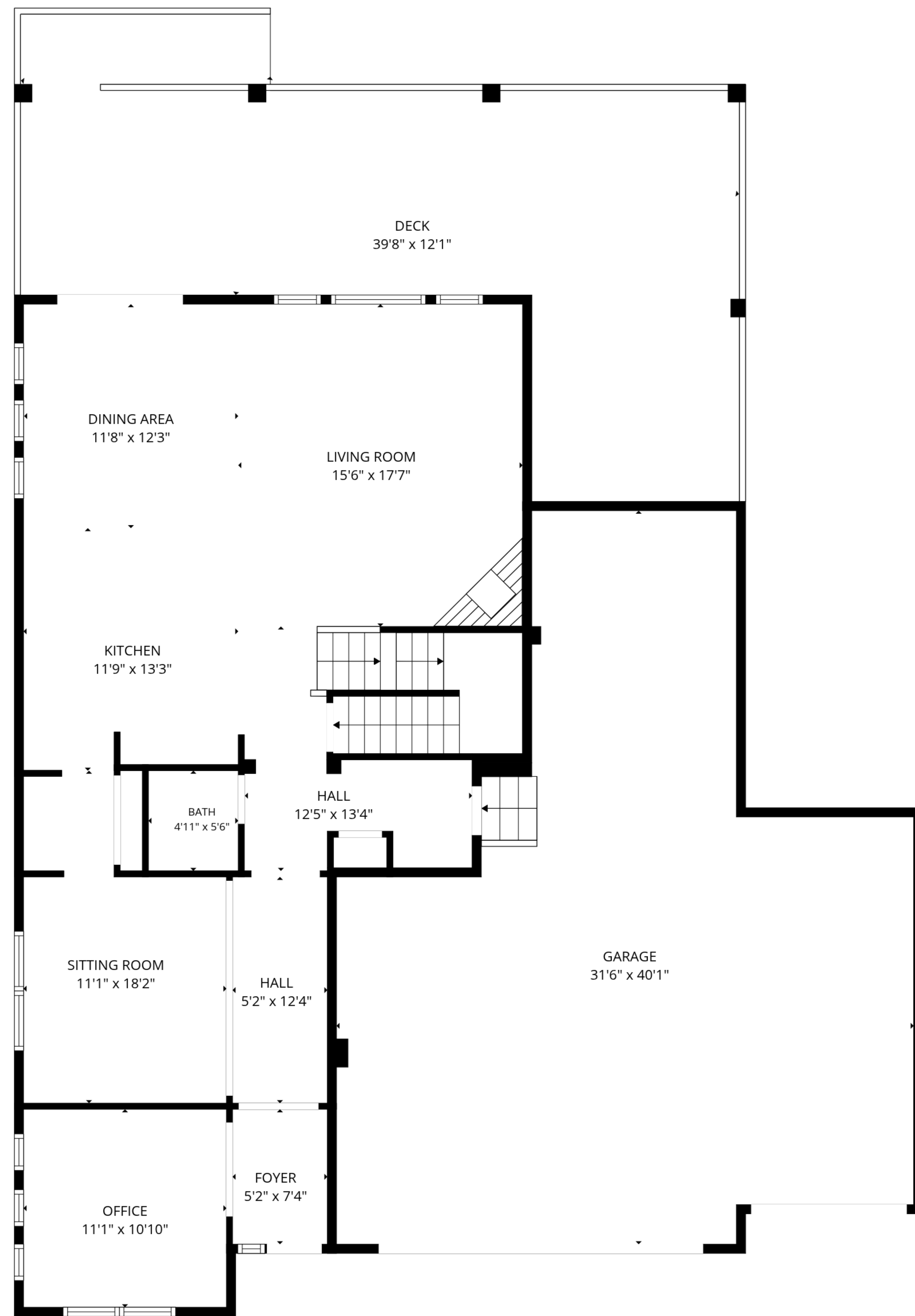


BASEMENT
27'3" x 54'10"

TOTAL: 2936 sq. ft

Basement: 0 sq. ft, 1st floor: 1202 sq. ft, 2nd floor: 1734 sq. ft

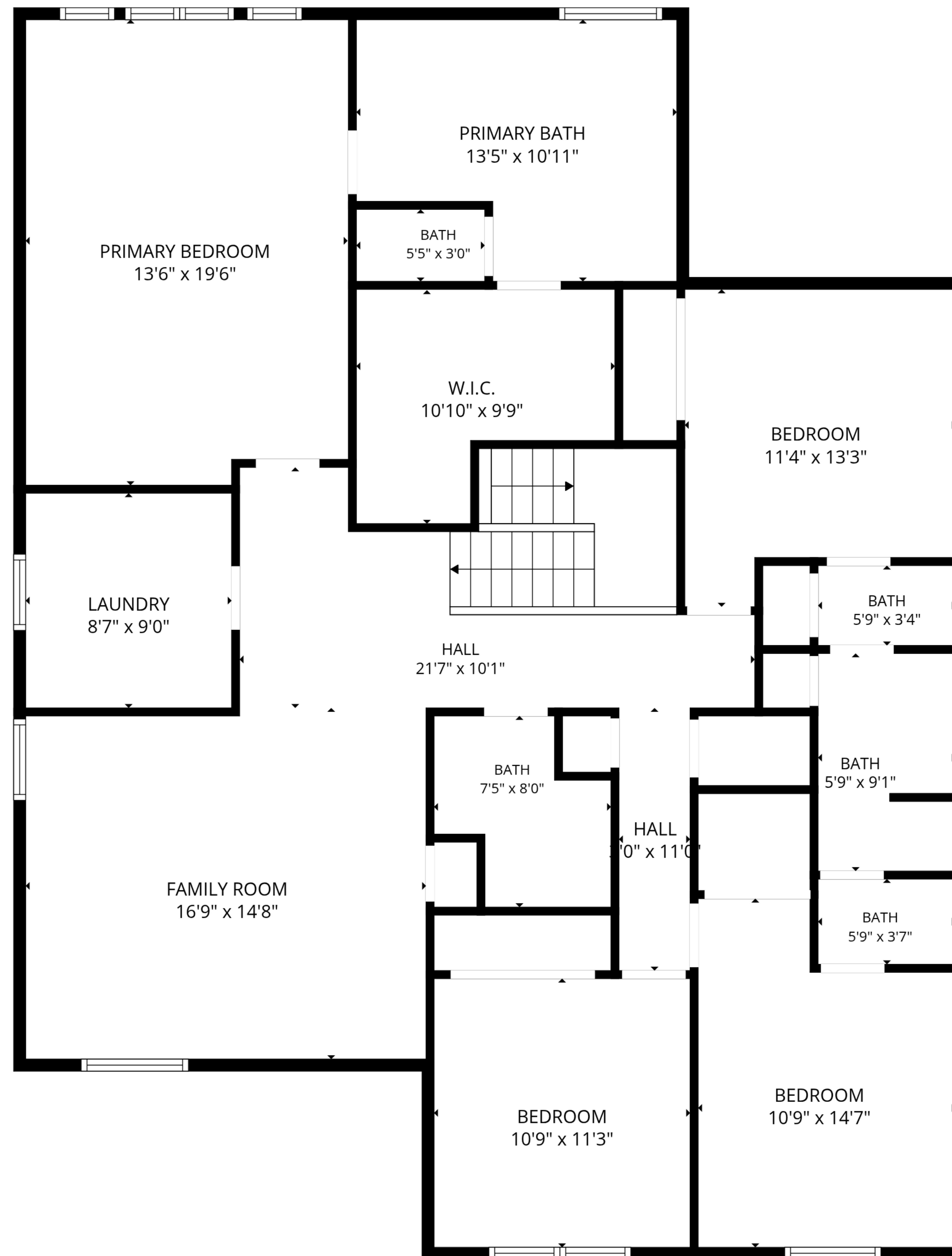
EXCLUDED AREAS: BASEMENT: 1202 sq. ft, GARAGE: 884 sq. ft, DECK: 624 sq. ft,
WALLS: 304 sq. ft



TOTAL: 2936 sq. ft

Basement: 0 sq. ft, 1st floor: 1202 sq. ft, 2nd floor: 1734 sq. ft

EXCLUDED AREAS: BASEMENT: 1202 sq. ft, GARAGE: 884 sq. ft, DECK: 624 sq. ft,
WALLS: 304 sq. ft

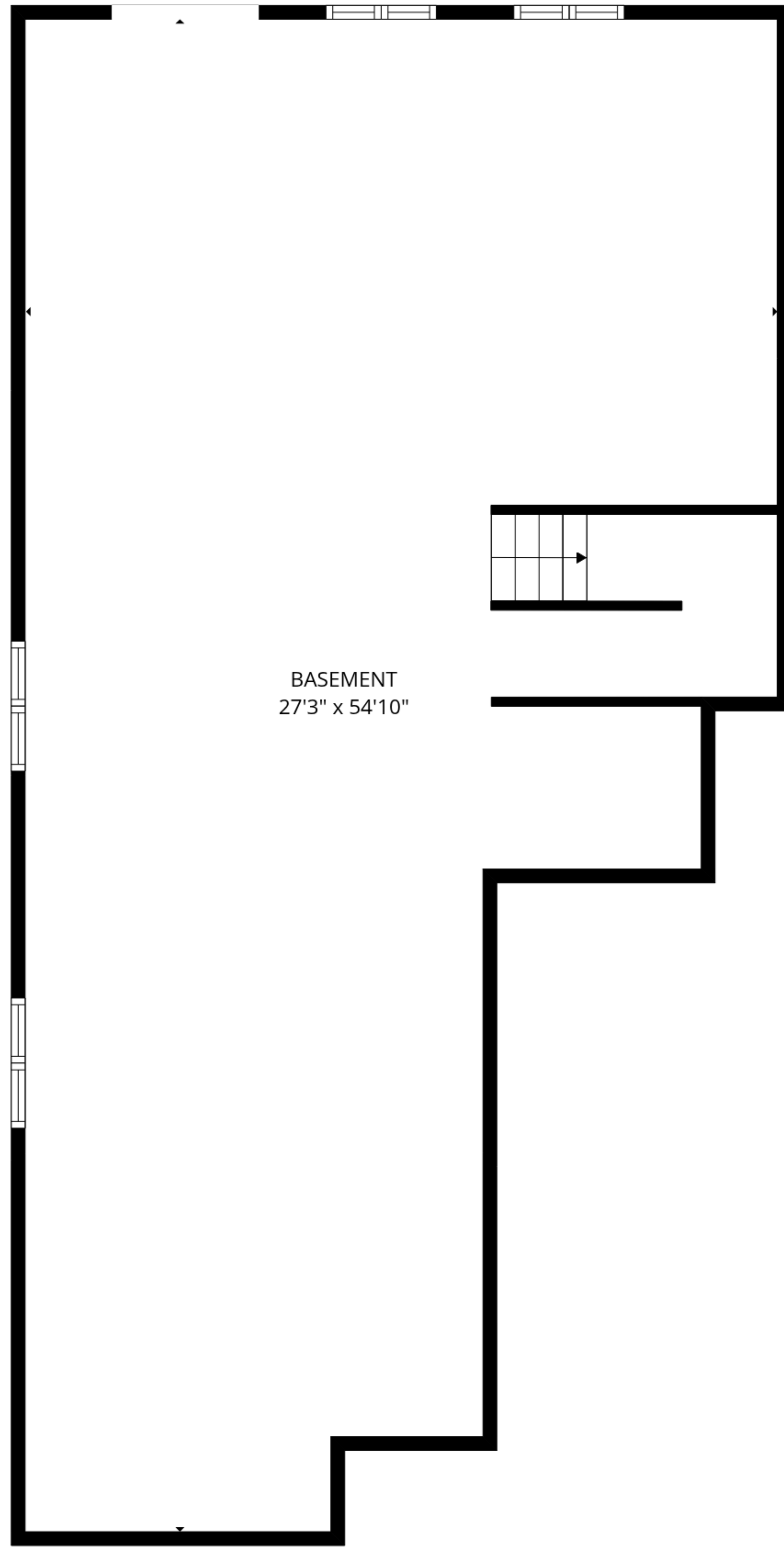


TOTAL: 2936 sq. ft

Basement: 0 sq. ft, 1st floor: 1202 sq. ft, 2nd floor: 1734 sq. ft

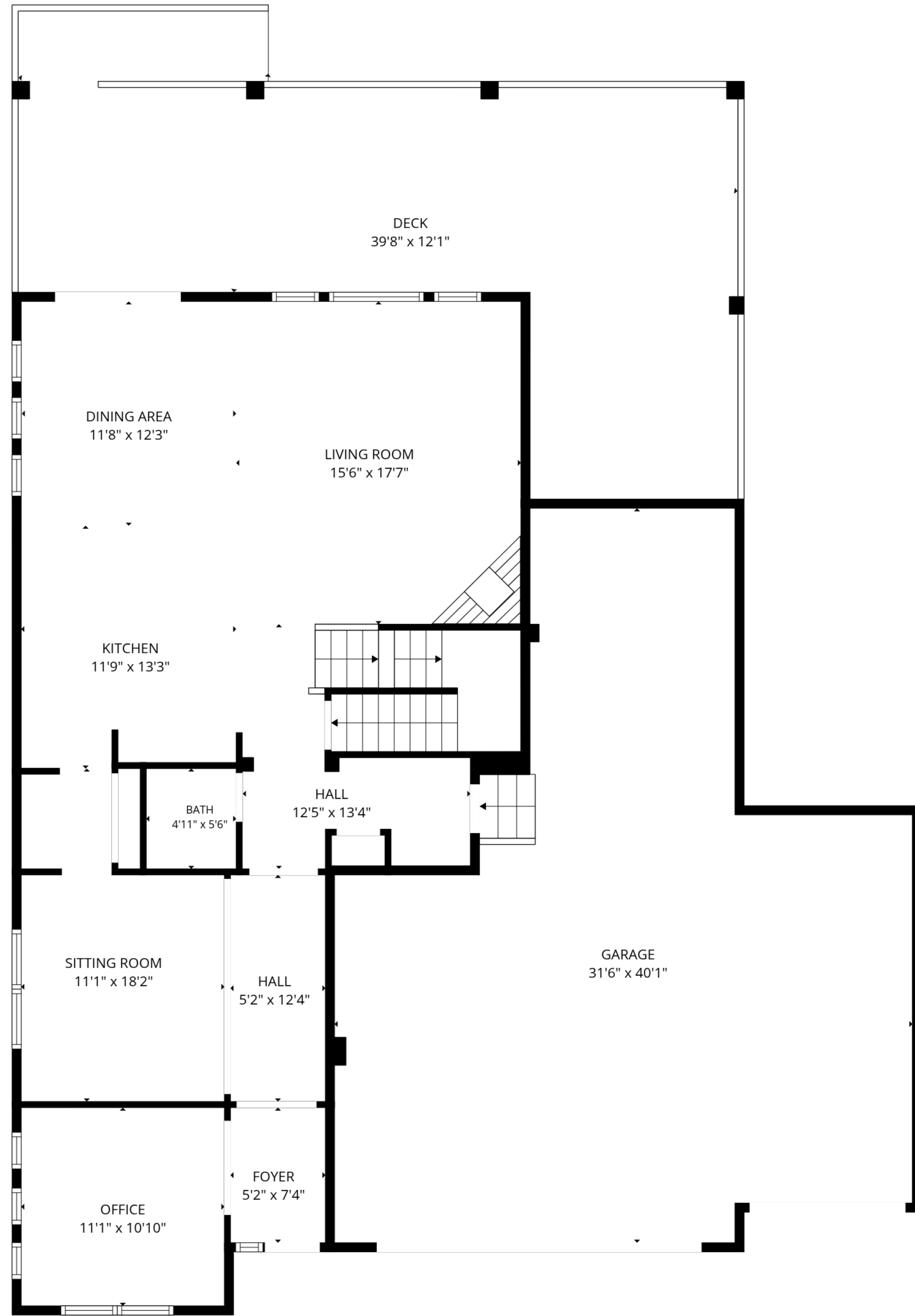
EXCLUDED AREAS: BASEMENT: 1202 sq. ft, GARAGE: 884 sq. ft, DECK: 624 sq. ft,

WALLS: 304 sq. ft

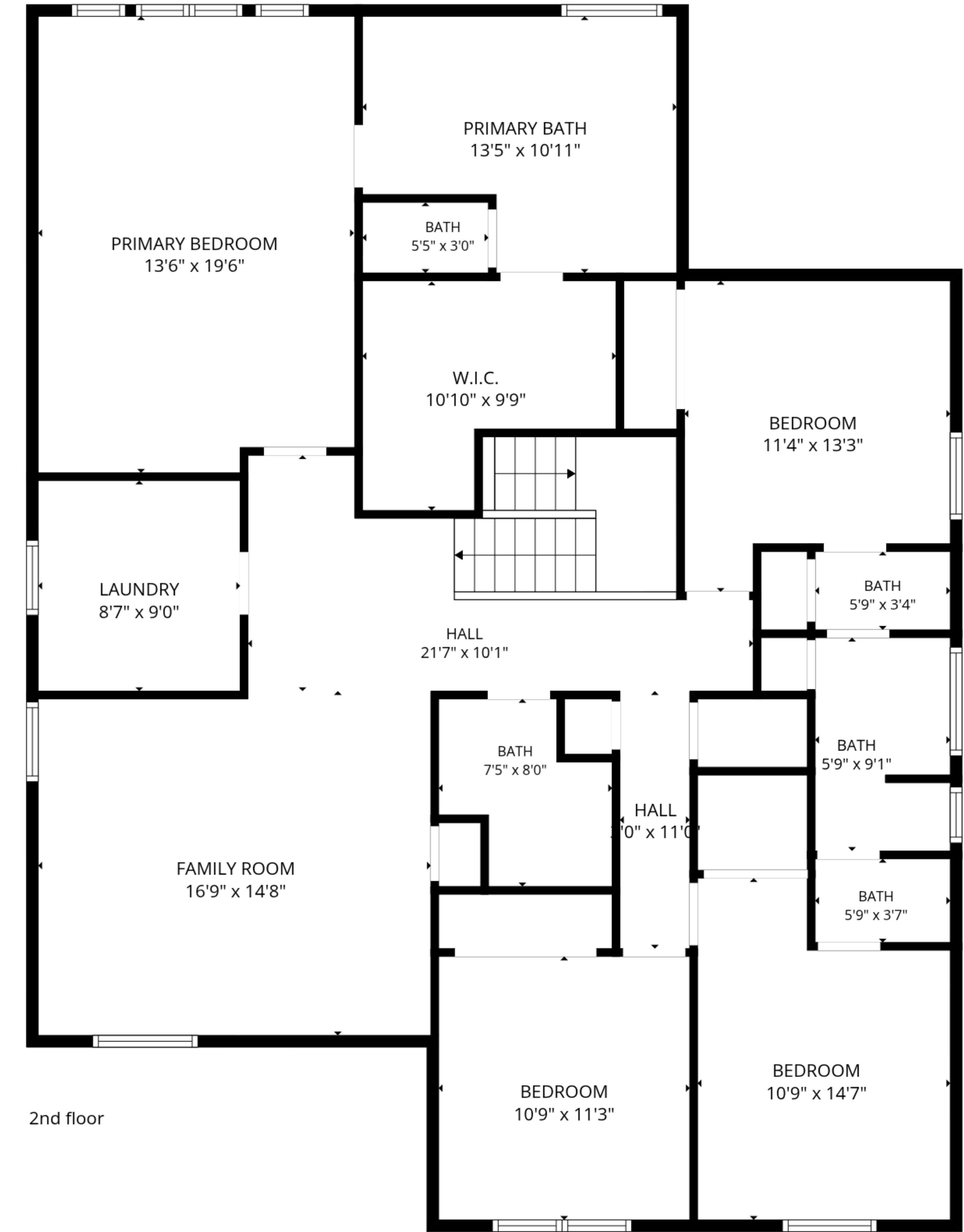


BASEMENT
27'3" x 54'10"

Basement



1st floor



2nd floor

TOTAL: 2936 sq. ft

Basement: 0 sq. ft, 1st floor: 1202 sq. ft, 2nd floor: 1734 sq. ft

EXCLUDED AREAS: BASEMENT: 1202 sq. ft, GARAGE: 884 sq. ft, DECK: 624 sq. ft,

WALLS: 304 sq. ft