

Home data report

5343 Oakridge Dr, Hamburg, NY, US



Total Area: 3508 sq. ft

Basement: 878 sq. ft, 1st Floor: 1607 sq. ft, 2nd Floor: 1023 sq. ft

Excluded: Basement 651 sq. ft, Fireplace 14 sq. ft, Walls: 256 sq. ft

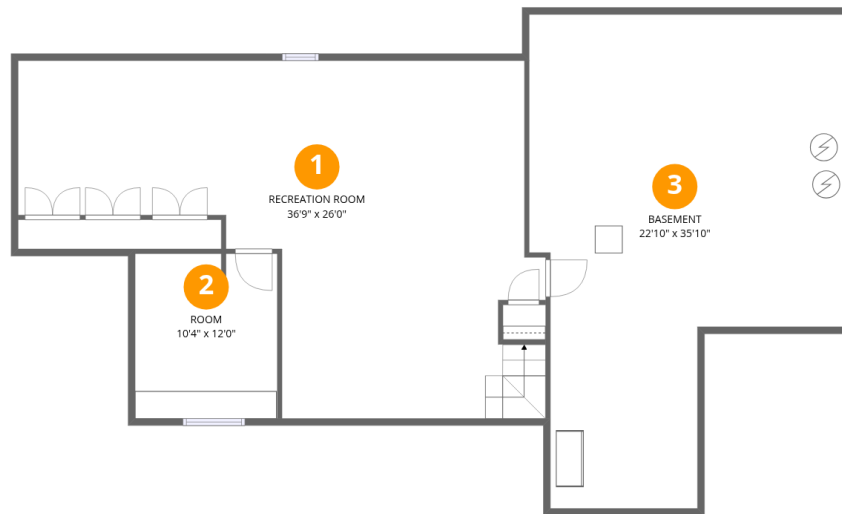
Property summary

 **3** Floors

 **5** Bedrooms

 **2** Bathrooms

 **1** Half baths



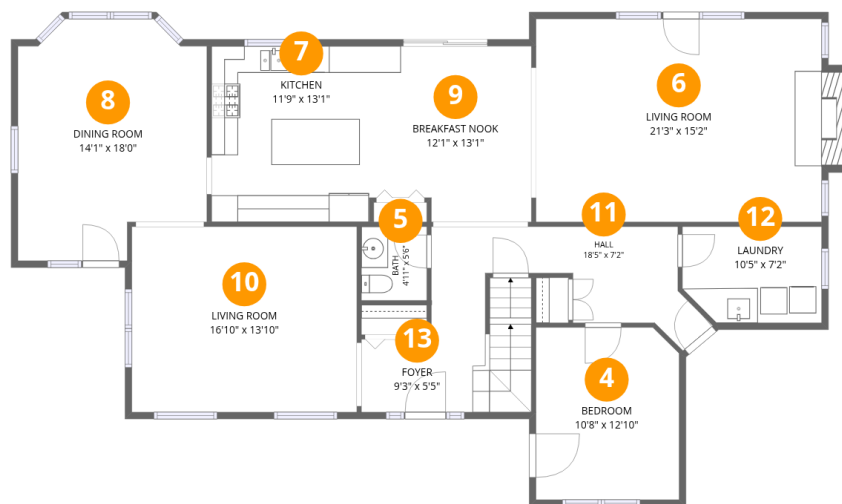
Room dimensions

Floor 1 Below grade

Total:878sqft

Excluded: 651sqft

#		Dimensions	sqft	Counted as living area
1	Recreation Room	36'9" x 26'0"	689 sq. ft	Yes
2	Room	10'4" x 12'0"	123 sq. ft	Yes
3	Basement	22'10" x 35'10"	651 sq. ft	No

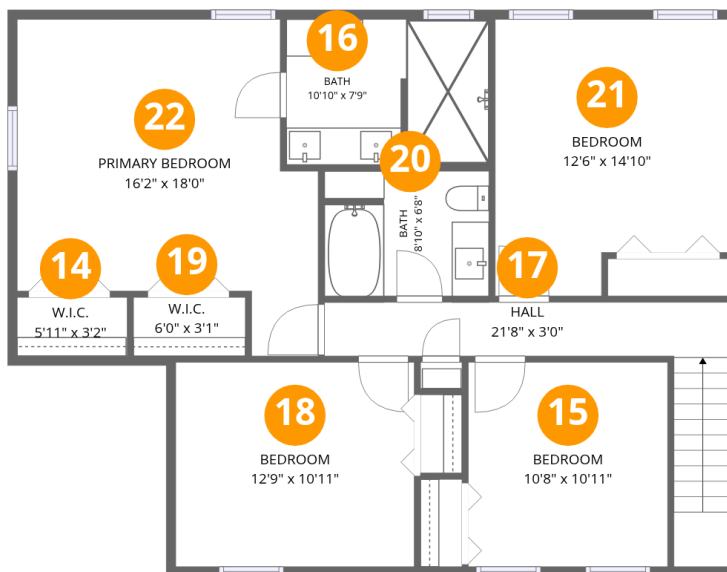


Room dimensions

Floor 2

Total:1607sqft Excluded: 14sqft

#		Dimensions	sqft	Counted as living area
4	Bedroom	10'8" x 12'10"	135 sq. ft	Yes
5	Bath	4'11" x 5'6"	27 sq. ft	Yes
6	Living Room	21'3" x 15'2"	335 sq. ft	Yes
7	Kitchen	11'9" x 13'1"	154 sq. ft	Yes
8	Dining Room	14'1" x 18'0"	226 sq. ft	Yes
9	Breakfast Nook	12'1" x 13'1"	150 sq. ft	Yes
10	Living Room	16'10" x 13'10"	232 sq. ft	Yes
11	Hall	18'5" x 7'2"	120 sq. ft	Yes
12	Laundry	10'5" x 7'2"	71 sq. ft	Yes
13	Foyer	9'3" x 5'5"	83 sq. ft	Yes



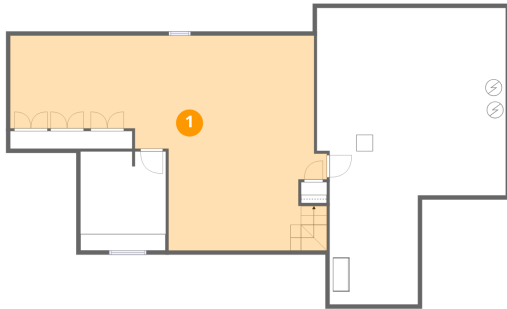
Room dimensions

Floor 3

Total: 1023 sqft Excluded: 0 sqft

#		Dimensions	sqft	Counted as living area
14	W.I.C.	5'11" x 3'2"	19 sq. ft	Yes
15	Bedroom	10'8" x 10'11"	117 sq. ft	Yes
16	Bath	10'10" x 7'9"	85 sq. ft	Yes
17	Hall	21'8" x 3'0"	96 sq. ft	Yes
18	Bedroom	12'9" x 10'11"	140 sq. ft	Yes
19	W.I.C.	6'0" x 3'1"	19 sq. ft	Yes
20	Bath	8'10" x 6'8"	58 sq. ft	Yes
21	Bedroom	12'6" x 14'10"	170 sq. ft	Yes
22	Primary Bedroom	16'2" x 18'0"	231 sq. ft	Yes

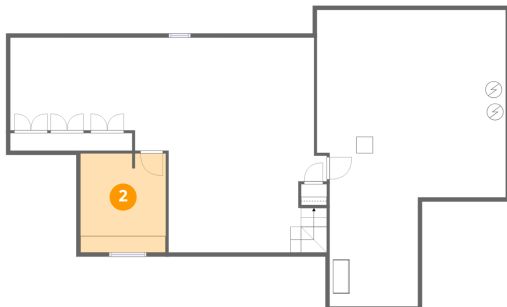
1 Floor 1 - Recreation Room



Dimensions: 36'9" x 26'0"
Area: 689 sq. ft
Counted as living area: Yes

Heated: Yes
Finished: Yes
Enclosed: Yes
Contiguous: Yes
Permitted: Yes
Wet space: No
Addition: No
Conversion: No

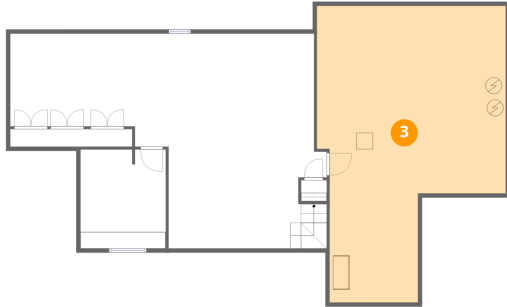
2 Floor 1 - Room



Dimensions: 10'4" x 12'0"
Area: 123 sq. ft
Counted as living area: Yes

Heated: Yes
Finished: Yes
Enclosed: Yes
Contiguous: Yes
Permitted: Yes
Wet space: No
Addition: No
Conversion: No

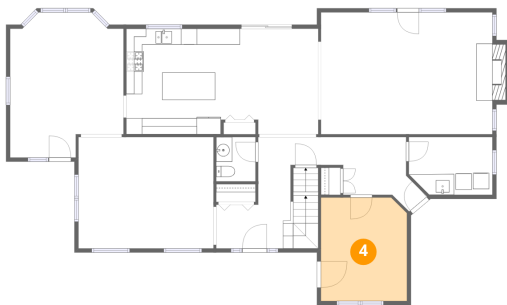
3 Floor 1 - Basement



Dimensions: 22'10" x 35'10"
Area: 651 sq. ft
Counted as living area: No

Heated: Yes
Finished: No
Enclosed: Yes
Contiguous: Yes
Permitted: Yes
Wet space: No
Addition: No
Conversion: No

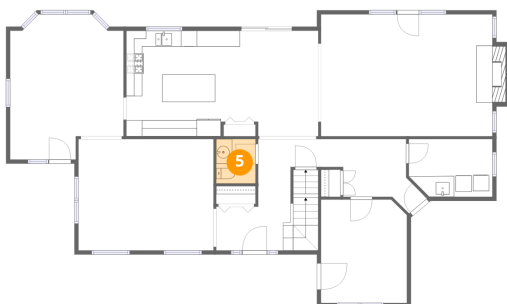
4 Floor 2 - Bedroom



Dimensions: 10'8" x 12'10"
Area: 135 sq. ft
Counted as living area: Yes

Heated: Yes
Finished: Yes
Enclosed: Yes
Contiguous: Yes
Permitted: Yes
Wet space: No
Addition: No
Conversion: No

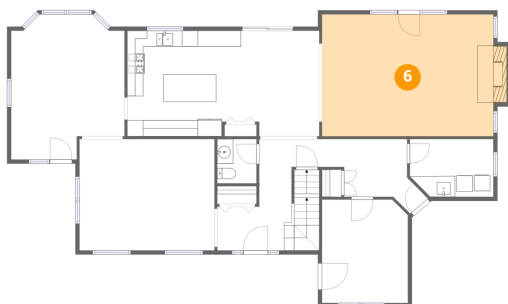
5 Floor 2 - Bath



Dimensions: 4'11" x 5'6"
Area: 27 sq. ft
Counted as living area: Yes

Heated: Yes
Finished: Yes
Enclosed: Yes
Contiguous: Yes
Permitted: Yes
Wet space: Yes
Addition: No
Conversion: No

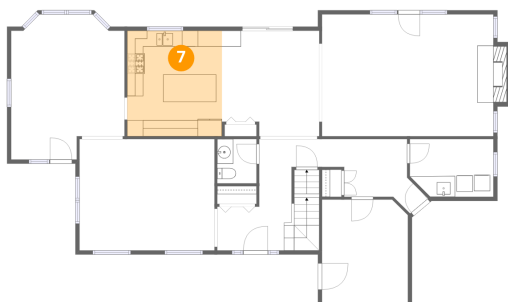
6 Floor 2 - Living Room



Dimensions: 21'3" x 15'2"
Area: 335 sq. ft
Counted as living area: Yes

Heated: Yes
Finished: Yes
Enclosed: Yes
Contiguous: Yes
Permitted: Yes
Wet space: No
Addition: No
Conversion: No

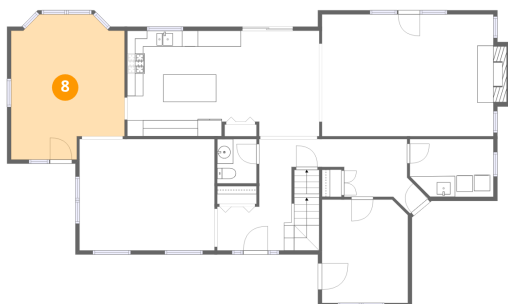
7 Floor 2 - Kitchen



Dimensions: 11'9" x 13'1"
Area: 154 sq. ft
Counted as living area: Yes

Heated: Yes
Finished: Yes
Enclosed: Yes
Contiguous: Yes
Permitted: Yes
Wet space: No
Addition: No
Conversion: No

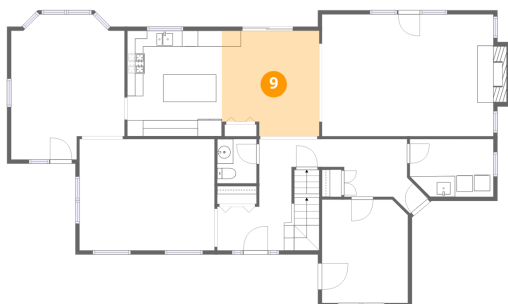
8 Floor 2 - Dining Room



Dimensions: 14'1" x 18'0"
Area: 226 sq. ft
Counted as living area: Yes

Heated: Yes
Finished: Yes
Enclosed: Yes
Contiguous: Yes
Permitted: Yes
Wet space: No
Addition: No
Conversion: No

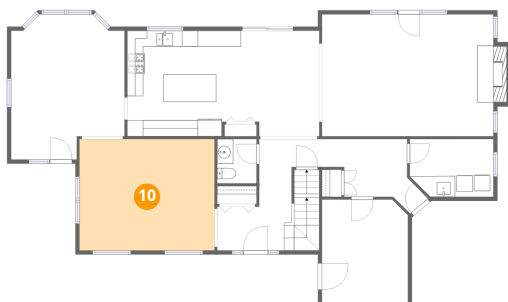
9 Floor 2 - Breakfast Nook



Dimensions: 12'1" x 13'1"
Area: 150 sq. ft
Counted as living area: Yes

Heated: Yes
Finished: Yes
Enclosed: Yes
Contiguous: Yes
Permitted: Yes
Wet space: No
Addition: No
Conversion: No

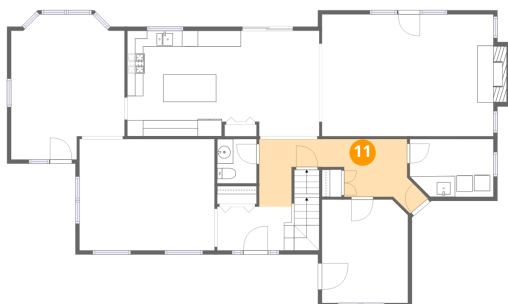
10 Floor 2 - Living Room



Dimensions: 16'10" x 13'10"
Area: 232 sq. ft
Counted as living area: Yes

Heated: Yes
Finished: Yes
Enclosed: Yes
Contiguous: Yes
Permitted: Yes
Wet space: No
Addition: No
Conversion: No

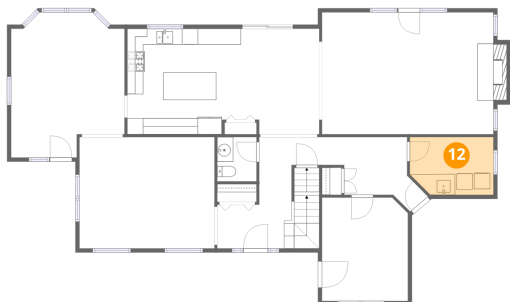
11 Floor 2 - Hall



Dimensions: 18'5" x 7'2"
Area: 120 sq. ft
Counted as living area: Yes

Heated: Yes
Finished: Yes
Enclosed: Yes
Contiguous: Yes
Permitted: Yes
Wet space: No
Addition: No
Conversion: No

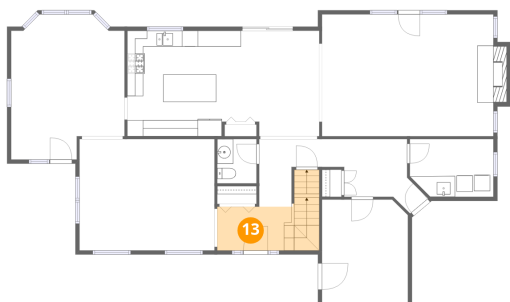
12 Floor 2 - Laundry



Dimensions: 10'5" x 7'2"
Area: 71 sq. ft
Counted as living area: Yes

Heated: Yes
Finished: Yes
Enclosed: Yes
Contiguous: Yes
Permitted: Yes
Wet space: No
Addition: No
Conversion: No

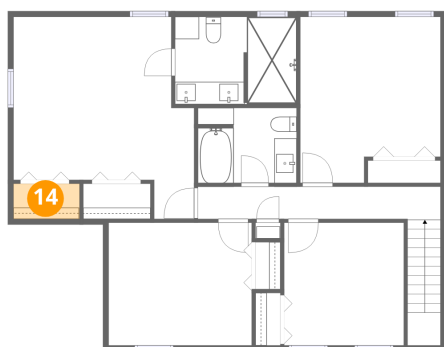
13 Floor 2 - Foyer



Dimensions: 9'3" x 5'5"
Area: 83 sq. ft
Counted as living area: Yes

Heated: Yes
Finished: Yes
Enclosed: Yes
Contiguous: Yes
Permitted: Yes
Wet space: No
Addition: No
Conversion: No

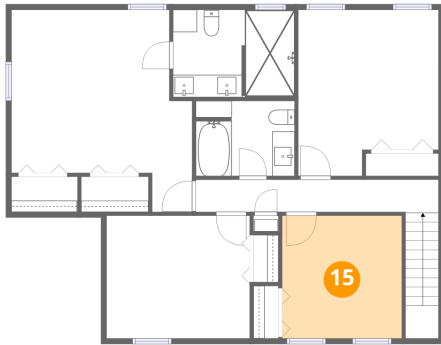
14 Floor 3 - W.I.C.



Dimensions: 5'11" x 3'2"
Area: 19 sq. ft
Counted as living area: Yes

Heated: Yes
Finished: Yes
Enclosed: Yes
Contiguous: Yes
Permitted: Yes
Wet space: No
Addition: No
Conversion: No

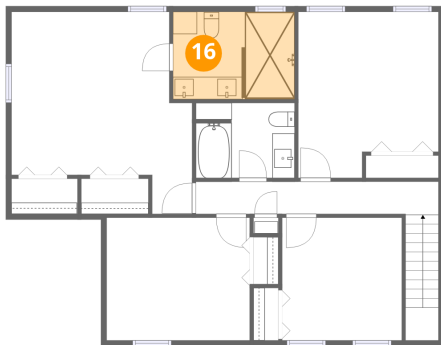
15 Floor 3 - Bedroom



Dimensions: 10'8" x 10'11"
Area: 117 sq. ft
Counted as living area: Yes

Heated: Yes
Finished: Yes
Enclosed: Yes
Contiguous: Yes
Permitted: Yes
Wet space: No
Addition: No
Conversion: No

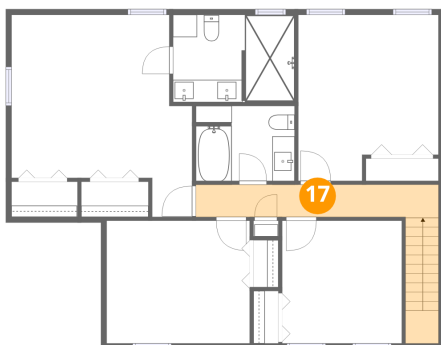
16 Floor 3 - Bath



Dimensions: 10'10" x 7'9"
Area: 85 sq. ft
Counted as living area: Yes

Heated: Yes
Finished: Yes
Enclosed: Yes
Contiguous: Yes
Permitted: Yes
Wet space: Yes
Addition: No
Conversion: No

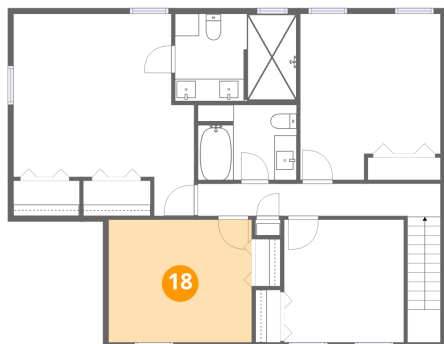
17 Floor 3 - Hall



Dimensions: 21'8" x 3'0"
Area: 96 sq. ft
Counted as living area: Yes

Heated: Yes
Finished: Yes
Enclosed: Yes
Contiguous: Yes
Permitted: Yes
Wet space: No
Addition: No
Conversion: No

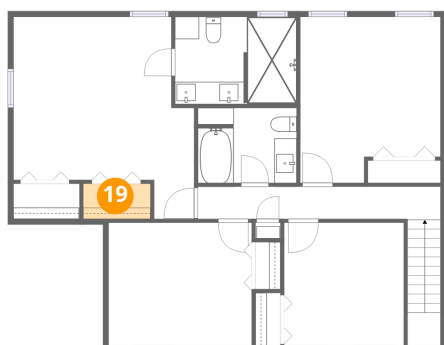
18 Floor 3 - Bedroom



Dimensions: 12'9" x 10'11"
Area: 140 sq. ft
Counted as living area: Yes

Heated: Yes
Finished: Yes
Enclosed: Yes
Contiguous: Yes
Permitted: Yes
Wet space: No
Addition: No
Conversion: No

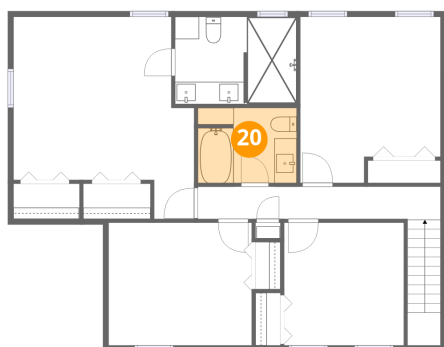
19 Floor 3 - W.I.C.



Dimensions: 6'0" x 3'1"
Area: 19 sq. ft
Counted as living area: Yes

Heated: Yes
Finished: Yes
Enclosed: Yes
Contiguous: Yes
Permitted: Yes
Wet space: No
Addition: No
Conversion: No

20 Floor 3 - Bath



Dimensions: 8'10" x 6'8"
Area: 58 sq. ft
Counted as living area: Yes

Heated: Yes
Finished: Yes
Enclosed: Yes
Contiguous: Yes
Permitted: Yes
Wet space: Yes
Addition: No
Conversion: No

21 Floor 3 - Bedroom



Dimensions: 12'6" x 14'10"
Area: 170 sq. ft
Counted as living area: Yes

Heated: Yes
Finished: Yes
Enclosed: Yes
Contiguous: Yes
Permitted: Yes
Wet space: No
Addition: No
Conversion: No

22 Floor 3 - Primary Bedroom



Dimensions: 16'2" x 18'0"
Area: 231 sq. ft
Counted as living area: Yes

Heated: Yes
Finished: Yes
Enclosed: Yes
Contiguous: Yes
Permitted: Yes
Wet space: No
Addition: No
Conversion: No