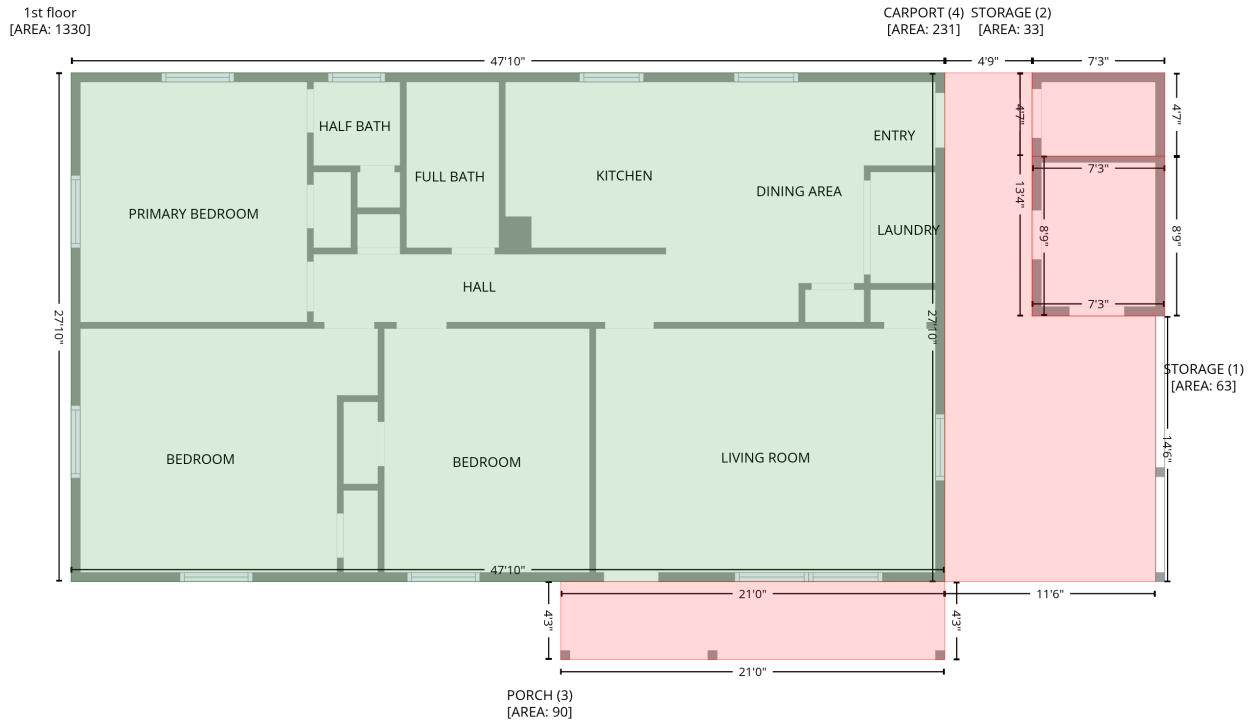


114 Edgewood Dr, Louisburg, NC, US

Gross Living Area: 1330 sq. ft

Level 1



Space	Area (sq. ft)	Calculation
1st floor (Living area)	1330	$-\left((629.5 + 629.5) * (101.8 - 435.8) + (629.5 + 55.8) * (435.8 - 435.8) + (55.8 + 55.8) * (435.8 - 101.8) + (55.8 + 629.5) * (101.8 - 101.8)\right) * 0.5 * 0.00694$
STORAGE (Non-living area)	63	$-\left((774 + 774) * (156.6 - 261.4) + (774 + 686.9) * (261.4 - 261.4) + (686.9 + 686.9) * (261.4 - 156.6) + (686.9 + 774) * (156.6 - 156.6)\right) * 0.5 * 0.00694$
STORAGE (Non-living area)	33	$-\left((774 + 774) * (101.8 - 156.6) + (774 + 686.9) * (156.6 - 156.6) + (686.9 + 686.9) * (156.6 - 101.8) + (686.9 + 774) * (101.8 - 101.8)\right) * 0.5 * 0.00694$
PORCH (Non-living area)	90	$-\left((629.5 + 629.5) * (435.8 - 487) + (629.5 + 377.3) * (487 - 487) + (377.3 + 377.3) * (487 - 435.8) + (377.3 + 629.5) * (435.8 - 435.8)\right) * 0.5 * 0.00694$
CARPORT (Non-living area)	231	$-\left((686.9 + 686.9) * (101.8 - 261.4) + (686.9 + 768) * (261.4 - 261.4) + (768 + 768) * (261.4 - 435.8) + (768 + 629.5) * (435.8 - 435.8) + (629.5 + 629.5) * (435.8 - 101.8) + (629.5 + 686.9) * (101.8 - 101.8)\right) * 0.5 * 0.00694$