

Home data report

4400 Harpoon Ct, Fort Collins, CO, US



Total Area: 2442 sq. ft

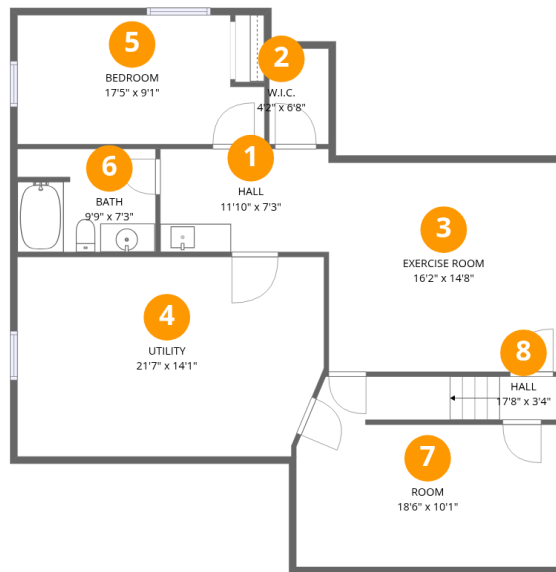
Basement: 855 sq. ft, 1st Floor: 1587 sq. ft

Excluded: Utility 296 sq. ft, Garage 350 sq. ft, Deck 404 sq. ft, Fireplace 14 sq. ft, Walls: 201 sq. ft

Property summary



4400 Harpoon Ct, Fort Collins, CO, US



Room dimensions

Floor 1 Below grade

Total:855sqft

Excluded: 296sqft

#		Dimensions	sqft	Counted as living area
1	Hall	11'10" x 7'3"	86 sq. ft	Yes
2	W.I.C.	4'2" x 6'8"	28 sq. ft	Yes
3	Exercise Room	16'2" x 14'8"	239 sq. ft	Yes
4	Utility	21'7" x 14'1"	296 sq. ft	No
5	Bedroom	17'5" x 9'1"	146 sq. ft	Yes
6	Bath	9'9" x 7'3"	70 sq. ft	Yes
7	Room	18'6" x 10'1"	185 sq. ft	Yes
8	Hall	17'8" x 3'4"	53 sq. ft	Yes

4400 Harpoon Ct, Fort Collins, CO, US



Room dimensions

Floor 2

Total: 1587sqft Excluded: 768sqft

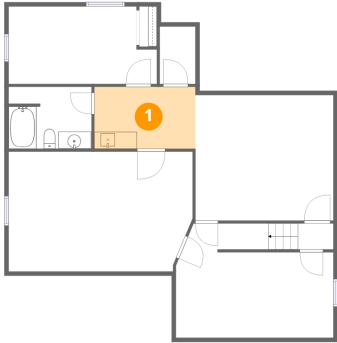
#		Dimensions	sqft	Counted as living area
9	Foyer	4'11" x 13'9"	67 sq. ft	Yes
10	Bath	7'8" x 5'1"	40 sq. ft	Yes
11	Bedroom	13'7" x 13'3"	180 sq. ft	Yes
12	Laundry	11'7" x 5'2"	66 sq. ft	Yes
13	Garage	19'2" x 18'3"	350 sq. ft	No
14	Deck	28'5" x 14'8"	404 sq. ft	No
15	Office	11'9" x 13'5"	127 sq. ft	Yes
16	Bedroom	10'11" x 12'1"	115 sq. ft	Yes
17	Primary Bedroom	17'6" x 15'10"	233 sq. ft	Yes
18	W.I.C.	5'2" x 9'8"	36 sq. ft	Yes
19	Bath	8'7" x 9'8"	70 sq. ft	Yes

Home data report

4400 Harpoon Ct, Fort Collins, CO, US

#		Dimensions	sqft	Counted as living area
20	Bath	5'9" x 3'5"	20 sq. ft	Yes
21	Bath	5'5" x 4'10"	26 sq. ft	Yes
22	W.I.C.	5'5" x 4'3"	23 sq. ft	Yes
23	Living Room	19'5" x 15'3"	302 sq. ft	Yes
24	Eat-in Kitchen	14'6" x 15'11"	214 sq. ft	Yes

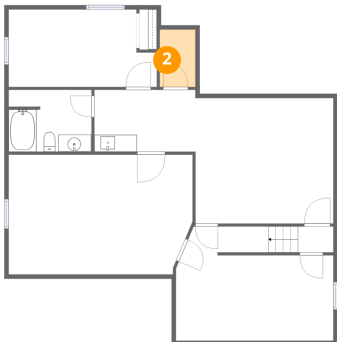
1 Floor 1 - Hall



Dimensions: 11'10" x 7'3"
Area: 86 sq. ft
Counted as living area: Yes

Heated: Yes
Finished: Yes
Enclosed: Yes
Contiguous: Yes
Permitted: Yes
Wet space: No
Addition: No
Conversion: No

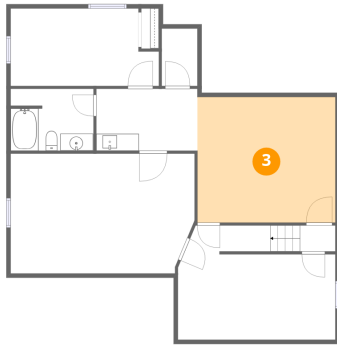
2 Floor 1 - W.I.C.



Dimensions: 4'2" x 6'8"
Area: 28 sq. ft
Counted as living area: Yes

Heated: Yes
Finished: Yes
Enclosed: Yes
Contiguous: Yes
Permitted: Yes
Wet space: No
Addition: No
Conversion: No

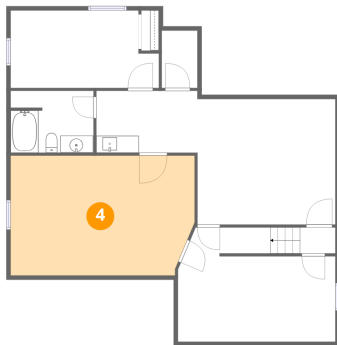
3 Floor 1 - Exercise Room



Dimensions: 16'2" x 14'8"
Area: 239 sq. ft
Counted as living area: Yes

Heated: Yes
Finished: Yes
Enclosed: Yes
Contiguous: Yes
Permitted: Yes
Wet space: No
Addition: No
Conversion: No

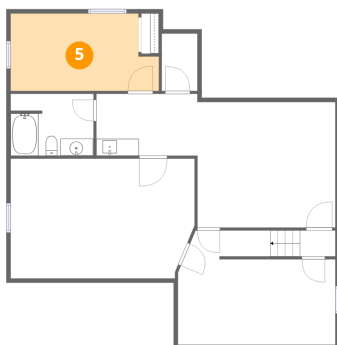
4 Floor 1 - Utility



Dimensions: 21'7" x 14'1"
Area: 296 sq. ft
Counted as living area: No

Heated: Yes
Finished: No
Enclosed: Yes
Contiguous: Yes
Permitted: Yes
Wet space: No
Addition: No
Conversion: No

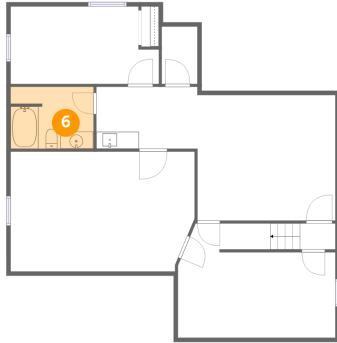
5 Floor 1 - Bedroom



Dimensions: 17'5" x 9'1"
Area: 146 sq. ft
Counted as living area: Yes

Heated: Yes
Finished: Yes
Enclosed: Yes
Contiguous: Yes
Permitted: Yes
Wet space: No
Addition: No
Conversion: No

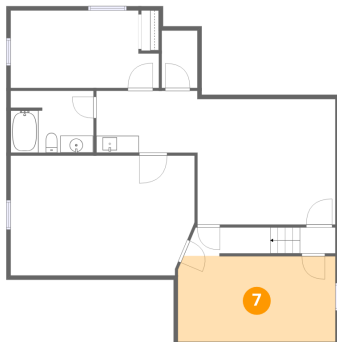
6 Floor 1 - Bath



Dimensions: 9'9" x 7'3"
Area: 70 sq. ft
Counted as living area: Yes

Heated: Yes
Finished: Yes
Enclosed: Yes
Contiguous: Yes
Permitted: Yes
Wet space: Yes
Addition: No
Conversion: No

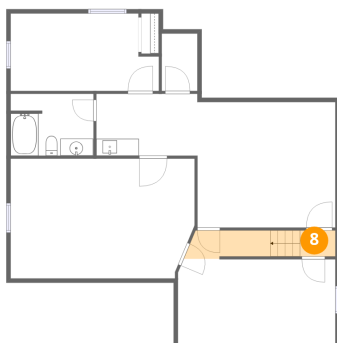
7 Floor 1 - Room



Dimensions: 18'6" x 10'1"
Area: 185 sq. ft
Counted as living area: Yes

Heated: Yes
Finished: Yes
Enclosed: Yes
Contiguous: Yes
Permitted: Yes
Wet space: No
Addition: No
Conversion: No

8 Floor 1 - Hall



Dimensions: 17'8" x 3'4"
Area: 53 sq. ft
Counted as living area: Yes

Heated: Yes
Finished: Yes
Enclosed: Yes
Contiguous: Yes
Permitted: Yes
Wet space: No
Addition: No
Conversion: No

9 Floor 2 - Foyer



Dimensions: 4'11" x 13'9"
Area: 67 sq. ft
Counted as living area: Yes

Heated: Yes
Finished: Yes
Enclosed: Yes
Contiguous: Yes
Permitted: Yes
Wet space: No
Addition: No
Conversion: No

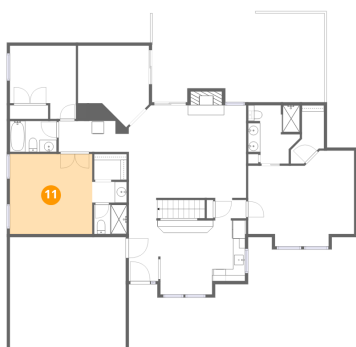
10 Floor 2 - Bath



Dimensions: 7'8" x 5'1"
Area: 40 sq. ft
Counted as living area: Yes

Heated: Yes
Finished: Yes
Enclosed: Yes
Contiguous: Yes
Permitted: Yes
Wet space: Yes
Addition: No
Conversion: No

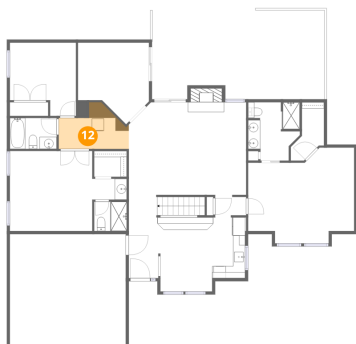
11 Floor 2 - Bedroom



Dimensions: 13'7" x 13'3"
Area: 180 sq. ft
Counted as living area: Yes

Heated: Yes
Finished: Yes
Enclosed: Yes
Contiguous: Yes
Permitted: Yes
Wet space: No
Addition: No
Conversion: No

12 Floor 2 - Laundry



Dimensions: 11'7" x 5'2"
Area: 66 sq. ft
Counted as living area: Yes

Heated: Yes
Finished: Yes
Enclosed: Yes
Contiguous: Yes
Permitted: Yes
Wet space: No
Addition: No
Conversion: No

13 Floor 2 - Garage



Dimensions: 19'2" x 18'3"
Area: 350 sq. ft
Counted as living area: No

Heated: No
Finished: No
Enclosed: Yes
Contiguous: Yes
Permitted: Yes
Wet space: No
Addition: No
Conversion: No

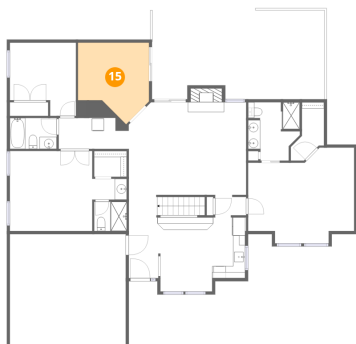
14 Floor 2 - Deck



Dimensions: 28'5" x 14'8"
Area: 404 sq. ft
Counted as living area: No

Heated: No
Finished: No
Enclosed: No
Contiguous: Yes
Permitted: Yes
Wet space: No
Addition: No
Conversion: No

15 Floor 2 - Office



Dimensions: 11'9" x 13'5"
Area: 127 sq. ft
Counted as living area: Yes

Heated: Yes
Finished: Yes
Enclosed: Yes
Contiguous: Yes
Permitted: Yes
Wet space: No
Addition: No
Conversion: No

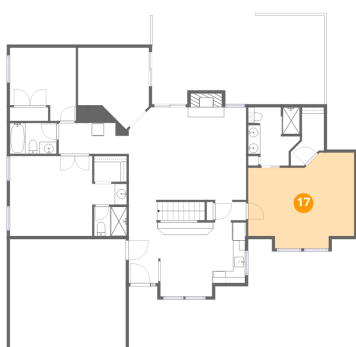
16 Floor 2 - Bedroom



Dimensions: 10'11" x 12'1"
Area: 115 sq. ft
Counted as living area: Yes

Heated: Yes
Finished: Yes
Enclosed: Yes
Contiguous: Yes
Permitted: Yes
Wet space: No
Addition: No
Conversion: No

17 Floor 2 - Primary Bedroom



Dimensions: 17'6" x 15'10"
Area: 233 sq. ft
Counted as living area: Yes

Heated: Yes
Finished: Yes
Enclosed: Yes
Contiguous: Yes
Permitted: Yes
Wet space: No
Addition: No
Conversion: No

18 Floor 2 - W.I.C.



Dimensions: 5'2" x 9'8"
Area: 36 sq. ft
Counted as living area: Yes

Heated: Yes
Finished: Yes
Enclosed: Yes
Contiguous: Yes
Permitted: Yes
Wet space: No
Addition: No
Conversion: No

19 Floor 2 - Bath



Dimensions: 8'7" x 9'8"
Area: 70 sq. ft
Counted as living area: Yes

Heated: Yes
Finished: Yes
Enclosed: Yes
Contiguous: Yes
Permitted: Yes
Wet space: Yes
Addition: No
Conversion: No

20 Floor 2 - Bath



Dimensions: 5'9" x 3'5"
Area: 20 sq. ft
Counted as living area: Yes

Heated: Yes
Finished: Yes
Enclosed: Yes
Contiguous: Yes
Permitted: Yes
Wet space: Yes
Addition: No
Conversion: No

21 Floor 2 - Bath



Dimensions: 5'5" x 4'10"
Area: 26 sq. ft
Counted as living area: Yes

Heated: Yes
Finished: Yes
Enclosed: Yes
Contiguous: Yes
Permitted: Yes
Wet space: Yes
Addition: No
Conversion: No

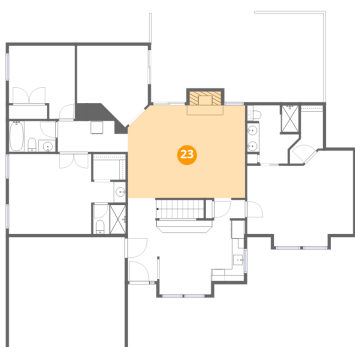
22 Floor 2 - W.I.C.



Dimensions: 5'5" x 4'3"
Area: 23 sq. ft
Counted as living area: Yes

Heated: Yes
Finished: Yes
Enclosed: Yes
Contiguous: Yes
Permitted: Yes
Wet space: No
Addition: No
Conversion: No

23 Floor 2 - Living Room



Dimensions: 19'5" x 15'3"
Area: 302 sq. ft
Counted as living area: Yes

Heated: Yes
Finished: Yes
Enclosed: Yes
Contiguous: Yes
Permitted: Yes
Wet space: No
Addition: No
Conversion: No

24 Floor 2 - Eat-in Kitchen



Dimensions: 14'6" x 15'11"
Area: 214 sq. ft
Counted as living area: Yes

Heated: Yes
Finished: Yes
Enclosed: Yes
Contiguous: Yes
Permitted: Yes
Wet space: No
Addition: No
Conversion: No