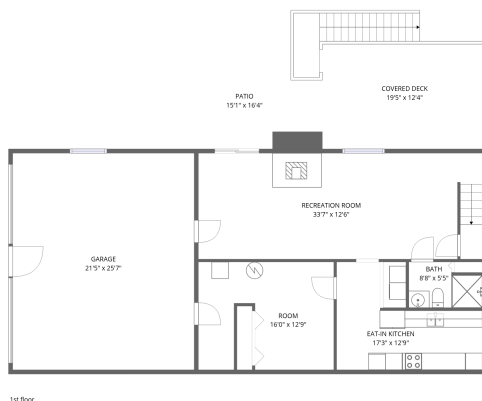


## Home data report

**189 Westridge Drive, Amsterdam, Daleville, Botetourt County, Virginia, United States, 24083**



**Total Area: 2288 sq. ft**

1st Floor: 859 sq. ft, 2nd Floor: 1429 sq. ft

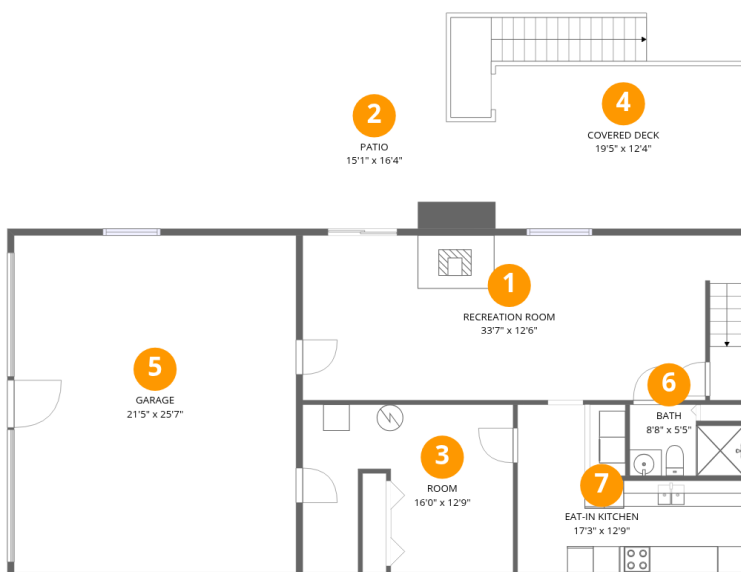
Excluded: Garage 549 sq. ft, Covered deck 320 sq. ft, Patio 218 sq. ft, Deck 263 sq. ft, Porch 60 sq. ft, Fireplace 12 sq. ft, Walls: 176 sq. ft

## Property summary



## Home data report

189 Westridge Drive, Amsterdam, Daleville, Botetourt County, Virginia, United States, 24083



## Room dimensions

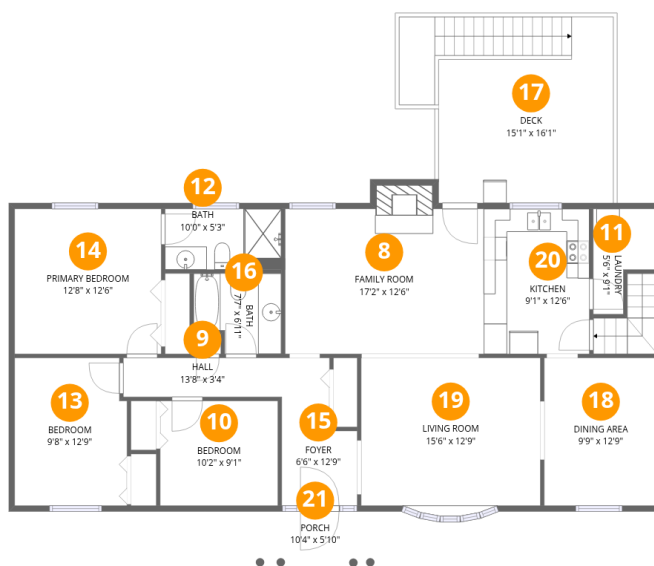
Floor 1

Total:859sqft Excluded: 1087sqft

#		Dimensions	sqft	Counted as living area
1	Recreation Room	33'7" x 12'6"	420 sq. ft	Yes
2	Patio	15'1" x 16'4"	247 sq. ft	No
3	Room	16'0" x 12'9"	204 sq. ft	Yes
4	Covered Deck	19'5" x 12'4"	240 sq. ft	No
5	Garage	21'5" x 25'7"	549 sq. ft	No
6	Bath	8'8" x 5'5"	47 sq. ft	Yes
7	Eat-in Kitchen	17'3" x 12'9"	220 sq. ft	Yes

Home data report

189 Westridge Drive, Amsterdam, Daleville, Botetourt County, Virginia, United States, 24083



## Room dimensions

Floor 2

Total:1429sqft Excluded: 335sqft

#		Dimensions	sqft	Counted as living area
8	Family Room	17'2" x 12'6"	215 sq. ft	Yes
9	Hall	13'8" x 3'4"	46 sq. ft	Yes
10	Bedroom	10'2" x 9'1"	92 sq. ft	Yes
11	Laundry	5'6" x 9'1"	50 sq. ft	Yes
12	Bath	10'0" x 5'3"	53 sq. ft	Yes
13	Bedroom	9'8" x 12'9"	123 sq. ft	Yes
14	Primary Bedroom	12'8" x 12'6"	159 sq. ft	Yes
15	Foyer	6'6" x 12'9"	83 sq. ft	Yes
16	Bath	7'7" x 6'11"	53 sq. ft	Yes
17	Deck	15'1" x 16'1"	243 sq. ft	No
18	Dining Area	9'9" x 12'9"	125 sq. ft	Yes

Home data report

**189 Westridge Drive, Amsterdam, Daleville, Botetourt County,  
Virginia, United States, 24083**

#		Dimensions	sqft	Counted as living area
19	Living Room	15'6" x 12'9"	197 sq. ft	Yes
20	Kitchen	9'1" x 12'6"	114 sq. ft	Yes
21	Porch	10'4" x 5'10"	60 sq. ft	No

189 Westridge Drive, Amsterdam, Daleville, Botetourt County, Virginia, United States, 24083

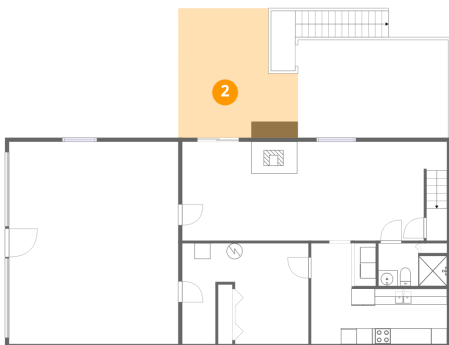
## 1 Floor 1 - Recreation Room



Dimensions: 33'7" x 12'6"  
Area: 420 sq. ft  
Counted as living area: Yes

Heated: Yes  
Finished: Yes  
Enclosed: Yes  
Contiguous: Yes  
Permitted: Yes  
Wet space: No  
Addition: No  
Conversion: No

## 2 Floor 1 - Patio

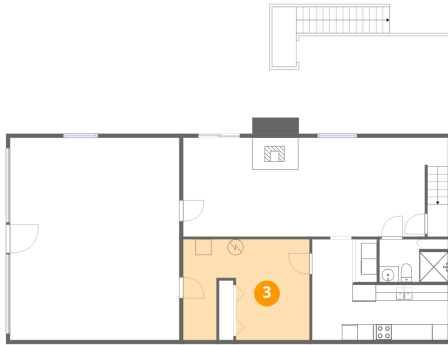


Dimensions: 15'1" x 16'4"  
Area: 247 sq. ft  
Counted as living area: No

Heated: No  
Finished: No  
Enclosed: No  
Contiguous: Yes  
Permitted: Yes  
Wet space: No  
Addition: No  
Conversion: No

189 Westridge Drive, Amsterdam, Daleville, Botetourt County, Virginia, United States, 24083

**3** Floor 1 - Room



Dimensions: 16'0" x 12'9"  
Area: 204 sq. ft  
Counted as living area: Yes

Heated: Yes  
Finished: Yes  
Enclosed: Yes  
Contiguous: Yes  
Permitted: Yes  
Wet space: No  
Addition: No  
Conversion: No

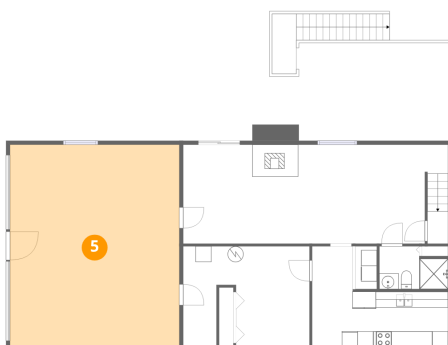
**4** Floor 1 - Covered Deck



Dimensions: 19'5" x 12'4"  
Area: 240 sq. ft  
Counted as living area: No

Heated: No  
Finished: No  
Enclosed: No  
Contiguous: Yes  
Permitted: Yes  
Wet space: No  
Addition: No  
Conversion: No

**5** Floor 1 - Garage



Dimensions: 21'5" x 25'7"  
Area: 549 sq. ft  
Counted as living area: No

Heated: No  
Finished: No  
Enclosed: Yes  
Contiguous: Yes  
Permitted: Yes  
Wet space: No  
Addition: No  
Conversion: No

189 Westridge Drive, Amsterdam, Daleville, Botetourt County, Virginia, United States, 24083

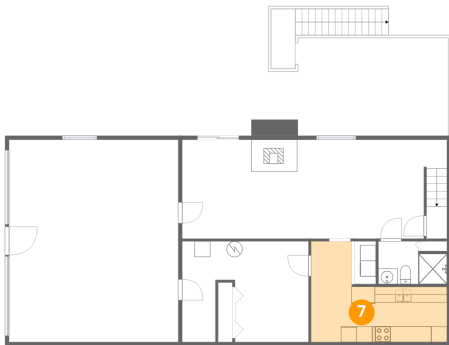
### 6 Floor 1 - Bath



Dimensions: 8'8" x 5'5"  
Area: 47 sq. ft  
Counted as living area: Yes

Heated: Yes  
Finished: Yes  
Enclosed: Yes  
Contiguous: Yes  
Permitted: Yes  
Wet space: Yes  
Addition: No  
Conversion: No

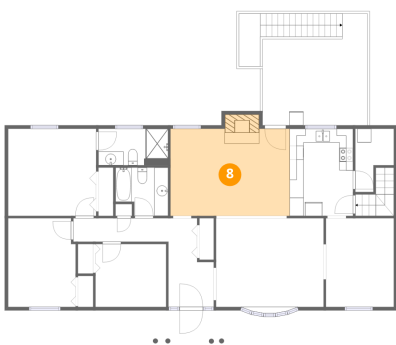
### 7 Floor 1 - Eat-in Kitchen



Dimensions: 17'3" x 12'9"  
Area: 220 sq. ft  
Counted as living area: Yes

Heated: Yes  
Finished: Yes  
Enclosed: Yes  
Contiguous: Yes  
Permitted: Yes  
Wet space: No  
Addition: No  
Conversion: No

### 8 Floor 2 - Family Room



Dimensions: 17'2" x 12'6"  
Area: 215 sq. ft  
Counted as living area: Yes

Heated: Yes  
Finished: Yes  
Enclosed: Yes  
Contiguous: Yes  
Permitted: Yes  
Wet space: No  
Addition: No  
Conversion: No

**9** Floor 2 - Hall



Dimensions: 13'8" x 3'4"  
Area: 46 sq. ft  
Counted as living area: Yes

Heated: Yes  
Finished: Yes  
Enclosed: Yes  
Contiguous: Yes  
Permitted: Yes  
Wet space: No  
Addition: No  
Conversion: No

**10** Floor 2 - Bedroom



Dimensions: 10'2" x 9'1"  
Area: 92 sq. ft  
Counted as living area: Yes

Heated: Yes  
Finished: Yes  
Enclosed: Yes  
Contiguous: Yes  
Permitted: Yes  
Wet space: No  
Addition: No  
Conversion: No

**11** Floor 2 - Laundry



Dimensions: 5'6" x 9'1"  
Area: 50 sq. ft  
Counted as living area: Yes

Heated: Yes  
Finished: Yes  
Enclosed: Yes  
Contiguous: Yes  
Permitted: Yes  
Wet space: No  
Addition: No  
Conversion: No

**12** Floor 2 - Bath



Dimensions: 10'0" x 5'3"  
Area: 53 sq. ft  
Counted as living area: Yes

Heated: Yes  
Finished: Yes  
Enclosed: Yes  
Contiguous: Yes  
Permitted: Yes  
Wet space: Yes  
Addition: No  
Conversion: No

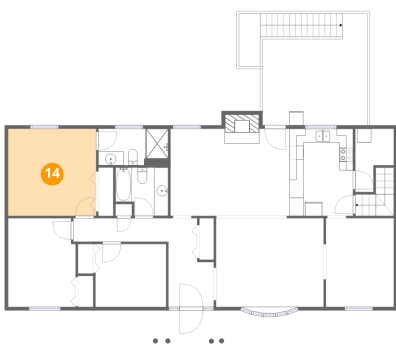
**13** Floor 2 - Bedroom



Dimensions: 9'8" x 12'9"  
Area: 123 sq. ft  
Counted as living area: Yes

Heated: Yes  
Finished: Yes  
Enclosed: Yes  
Contiguous: Yes  
Permitted: Yes  
Wet space: No  
Addition: No  
Conversion: No

**14** Floor 2 - Primary Bedroom



Dimensions: 12'8" x 12'6"  
Area: 159 sq. ft  
Counted as living area: Yes

Heated: Yes  
Finished: Yes  
Enclosed: Yes  
Contiguous: Yes  
Permitted: Yes  
Wet space: No  
Addition: No  
Conversion: No

189 Westridge Drive, Amsterdam, Daleville, Botetourt County, Virginia, United States, 24083

15 Floor 2 - Foyer



Dimensions: 6'6" x 12'9"  
Area: 83 sq. ft  
Counted as living area: Yes

Heated: Yes  
Finished: Yes  
Enclosed: Yes  
Contiguous: Yes  
Permitted: Yes  
Wet space: No  
Addition: No  
Conversion: No

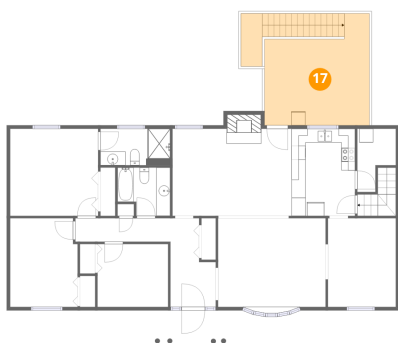
16 Floor 2 - Bath



Dimensions: 7'7" x 6'11"  
Area: 53 sq. ft  
Counted as living area: Yes

Heated: Yes  
Finished: Yes  
Enclosed: Yes  
Contiguous: Yes  
Permitted: Yes  
Wet space: Yes  
Addition: No  
Conversion: No

17 Floor 2 - Deck



Dimensions: 15'1" x 16'1"  
Area: 243 sq. ft  
Counted as living area: No

Heated: No  
Finished: No  
Enclosed: No  
Contiguous: Yes  
Permitted: Yes  
Wet space: No  
Addition: No  
Conversion: No

### 18 Floor 2 - Dining Area



Dimensions: 9'9" x 12'9"  
Area: 125 sq. ft  
Counted as living area: Yes

Heated: Yes  
Finished: Yes  
Enclosed: Yes  
Contiguous: Yes  
Permitted: Yes  
Wet space: No  
Addition: No  
Conversion: No

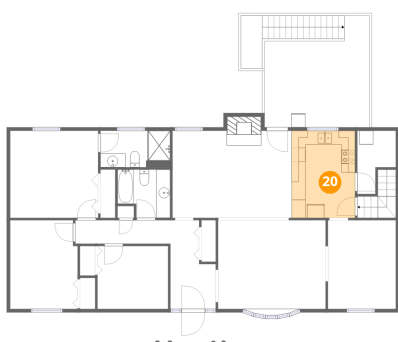
### 19 Floor 2 - Living Room



Dimensions: 15'6" x 12'9"  
Area: 197 sq. ft  
Counted as living area: Yes

Heated: Yes  
Finished: Yes  
Enclosed: Yes  
Contiguous: Yes  
Permitted: Yes  
Wet space: No  
Addition: No  
Conversion: No

### 20 Floor 2 - Kitchen

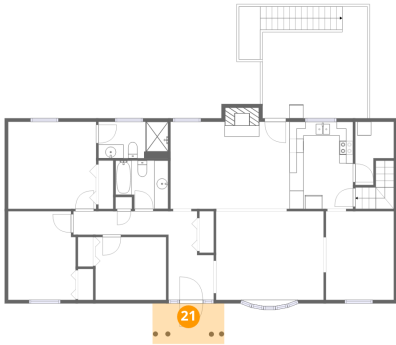


Dimensions: 9'1" x 12'6"  
Area: 114 sq. ft  
Counted as living area: Yes

Heated: Yes  
Finished: Yes  
Enclosed: Yes  
Contiguous: Yes  
Permitted: Yes  
Wet space: No  
Addition: No  
Conversion: No

189 Westridge Drive, Amsterdam, Daleville, Botetourt County,  
Virginia, United States, 24083

**21** Floor 2 - Porch



Dimensions: 10'4" x 5'10"  
Area: 60 sq. ft  
Counted as living area: No

Heated: No  
Finished: No  
Enclosed: No  
Contiguous: Yes  
Permitted: Yes  
Wet space: No  
Addition: No  
Conversion: No