


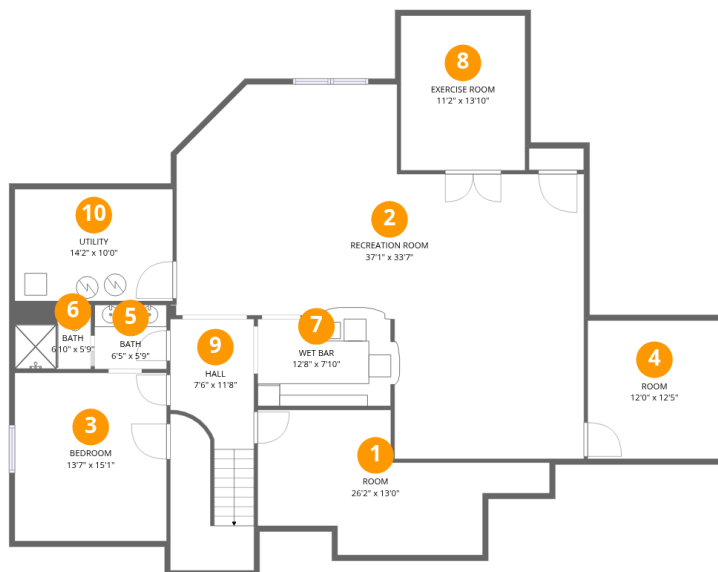
Home data report

849 Northwoods Road, Deerfield, Lake County, Illinois, United States, 60015

 **2**
Half baths

 **1**
Garages

849 Northwoods Road, Deerfield, Lake County, Illinois, United States, 60015



Room dimensions

Floor 1 Below grade

Total:1738sqft

Excluded: 363sqft

#		Dimensions	sqft	Counted as living area
1	Room	26'2" x 13'0"	341 sq. ft	No
2	Recreation Room	37'1" x 33'7"	1245 sq. ft	Yes
3	Bedroom	13'7" x 15'1"	205 sq. ft	Yes
4	Room	12'0" x 12'5"	148 sq. ft	Yes
5	Bath	6'5" x 5'9"	37 sq. ft	Yes
6	Bath	6'10" x 5'9"	39 sq. ft	Yes
7	Wet Bar	12'8" x 7'10"	99 sq. ft	Yes
8	Exercise Room	11'2" x 13'10"	155 sq. ft	Yes
9	Hall	7'6" x 11'8"	87 sq. ft	Yes
10	Utility	14'2" x 10'0"	142 sq. ft	No

849 Northwoods Road, Deerfield, Lake County, Illinois, United States, 60015



Room dimensions

Floor 2

Total:2864sqft Excluded: 826sqft

#		Dimensions	sqft	Counted as living area
11	Living Room	13'11" x 12'10"	178 sq. ft	Yes
12	Patio	31'8" x 22'1"	701 sq. ft	No
13	Office	13'1" x 11'5"	150 sq. ft	Yes
14	Garage	20'11" x 35'9"	747 sq. ft	Yes
15	Bath	6'3" x 6'7"	41 sq. ft	Yes
16	Hall	5'11" x 12'5"	73 sq. ft	Yes
17	Family Room	20'10" x 22'2"	462 sq. ft	Yes
18	Bath	5'8" x 5'10"	33 sq. ft	Yes
19	Laundry	10'10" x 12'5"	135 sq. ft	Yes
20	Hall	19'0" x 4'5"	84 sq. ft	Yes
21	Patio	8'3" x 11'10"	98 sq. ft	No

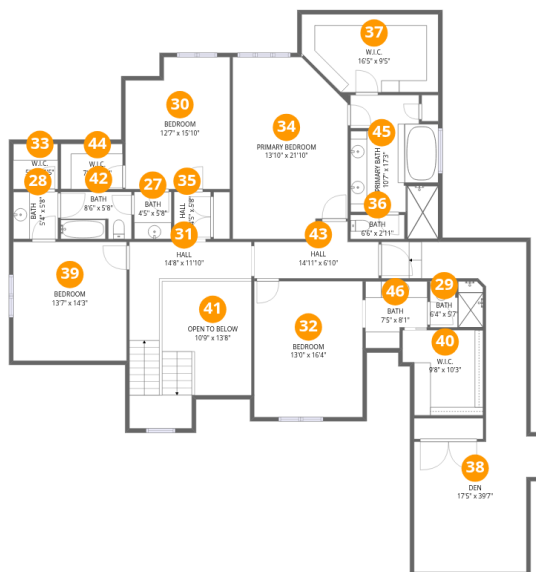
Home data report

849 Northwoods Road, Deerfield, Lake County, Illinois, United States, 60015

#		Dimensions	sqft	Counted as living area
22	Hall	7'5" x 4'4"	32 sq. ft	Yes
23	Breakfast Room	11'2" x 11'11"	132 sq. ft	Yes
24	Kitchen	16'5" x 15'1"	248 sq. ft	Yes
25	Foyer	15'0" x 19'5"	291 sq. ft	Yes
26	Dining Room	13'0" x 17'0"	221 sq. ft	Yes

Home data report

849 Northwoods Road, Deerfield, Lake County, Illinois, United States, 60015



Room dimensions

Floor 3

Total:2271sqft Excluded: 195sqft

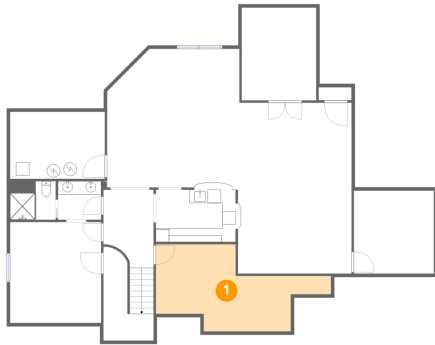
#		Dimensions	sqft	Counted as living area
27	Bath	4'5" x 5'8"	25 sq. ft	Yes
28	Bath	5'4" x 5'8"	30 sq. ft	Yes
29	Bath	6'4" x 5'7"	35 sq. ft	Yes
30	Bedroom	12'7" x 15'10"	199 sq. ft	Yes
31	Hall	14'8" x 11'10"	173 sq. ft	Yes
32	Bedroom	13'0" x 16'4"	212 sq. ft	Yes
33	W.I.C.	5'4" x 5'5"	29 sq. ft	Yes
34	Primary Bedroom	13'10" x 21'10"	302 sq. ft	Yes
35	Hall	4'5" x 5'8"	25 sq. ft	Yes
36	Bath	6'6" x 2'11"	19 sq. ft	Yes
37	W.I.C.	16'5" x 9'5"	154 sq. ft	Yes

Home data report

849 Northwoods Road, Deerfield, Lake County, Illinois, United States, 60015

#		Dimensions	sqft	Counted as living area
38	Den	17'5" x 39'7"	689 sq. ft	Yes
39	Bedroom	13'7" x 14'3"	194 sq. ft	Yes
40	W.I.C.	9'8" x 10'3"	99 sq. ft	Yes
41	Open To Below	10'9" x 13'8"	147 sq. ft	No
42	Bath	8'6" x 5'8"	48 sq. ft	Yes
43	Hall	14'11" x 6'10"	102 sq. ft	Yes
44	W.I.C.	7'5" x 5'5"	40 sq. ft	Yes
45	Primary Bath	10'7" x 17'3"	182 sq. ft	Yes
46	Bath	7'5" x 8'1"	60 sq. ft	Yes

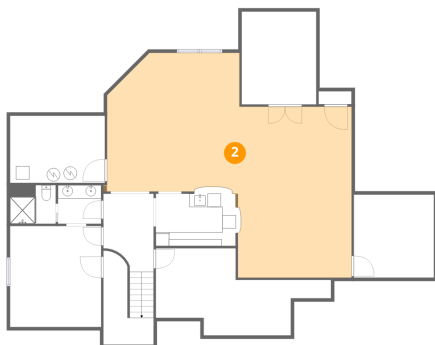
1 Floor 1 - Room



Dimensions: 26'2" x 13'0"
Area: 341 sq. ft
Counted as living area: No

Heated: Yes
Finished: No
Enclosed: Yes
Contiguous: Yes
Permitted: Yes
Wet space: No
Addition: No
Conversion: No

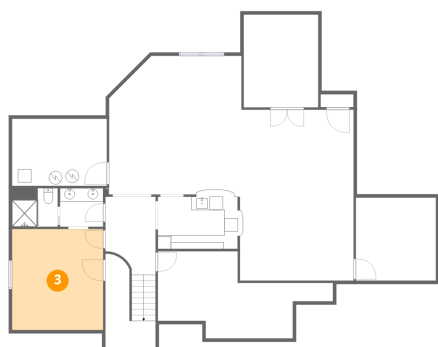
2 Floor 1 - Recreation Room



Dimensions: 37'1" x 33'7"
Area: 1245 sq. ft
Counted as living area: Yes

Heated: Yes
Finished: Yes
Enclosed: Yes
Contiguous: Yes
Permitted: Yes
Wet space: No
Addition: No
Conversion: No

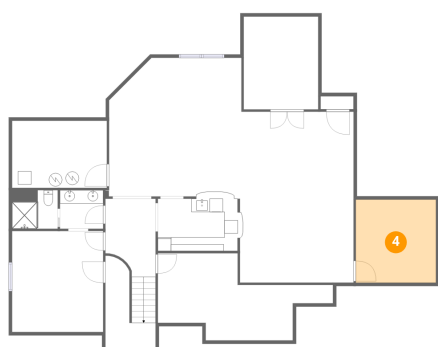
3 Floor 1 - Bedroom



Dimensions: 13'7" x 15'1"
Area: 205 sq. ft
Counted as living area: Yes

Heated: Yes
Finished: Yes
Enclosed: Yes
Contiguous: Yes
Permitted: Yes
Wet space: No
Addition: No
Conversion: No

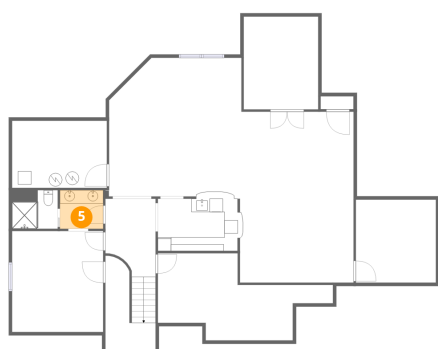
4 Floor 1 - Room



Dimensions: 12'0" x 12'5"
Area: 148 sq. ft
Counted as living area: Yes

Heated: Yes
Finished: Yes
Enclosed: Yes
Contiguous: Yes
Permitted: Yes
Wet space: No
Addition: No
Conversion: No

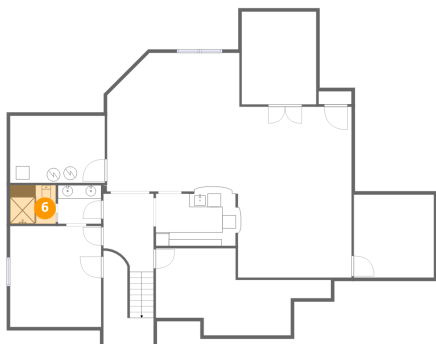
5 Floor 1 - Bath



Dimensions: 6'5" x 5'9"
Area: 37 sq. ft
Counted as living area: Yes

Heated: Yes
Finished: Yes
Enclosed: Yes
Contiguous: Yes
Permitted: Yes
Wet space: Yes
Addition: No
Conversion: No

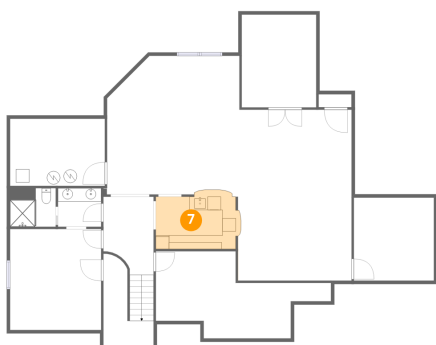
6 Floor 1 - Bath



Dimensions: 6'10" x 5'9"
Area: 39 sq. ft
Counted as living area: Yes

Heated: Yes
Finished: Yes
Enclosed: Yes
Contiguous: Yes
Permitted: Yes
Wet space: Yes
Addition: No
Conversion: No

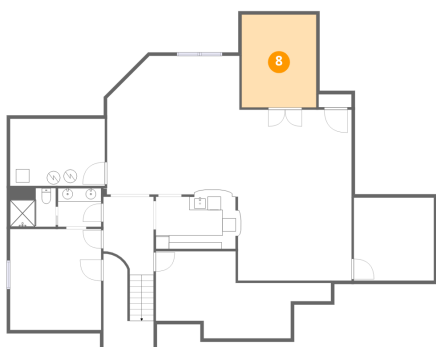
7 Floor 1 - Wet Bar



Dimensions: 12'8" x 7'10"
Area: 99 sq. ft
Counted as living area: Yes

Heated: Yes
Finished: Yes
Enclosed: Yes
Contiguous: Yes
Permitted: Yes
Wet space: No
Addition: No
Conversion: No

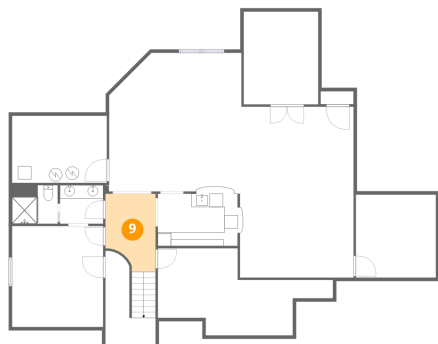
8 Floor 1 - Exercise Room



Dimensions: 11'2" x 13'10"
Area: 155 sq. ft
Counted as living area: Yes

Heated: Yes
Finished: Yes
Enclosed: Yes
Contiguous: Yes
Permitted: Yes
Wet space: No
Addition: No
Conversion: No

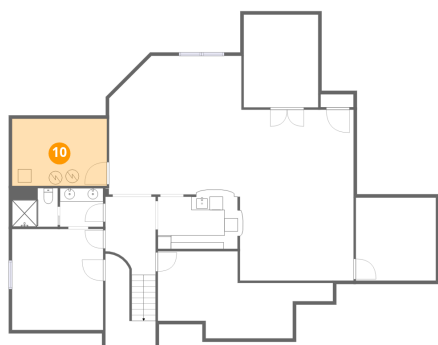
9 Floor 1 - Hall



Dimensions: 7'6" x 11'8"
Area: 87 sq. ft
Counted as living area: Yes

Heated: Yes
Finished: Yes
Enclosed: Yes
Contiguous: Yes
Permitted: Yes
Wet space: No
Addition: No
Conversion: No

10 Floor 1 - Utility



Dimensions: 14'2" x 10'0"
Area: 142 sq. ft
Counted as living area: No

Heated: Yes
Finished: No
Enclosed: Yes
Contiguous: Yes
Permitted: Yes
Wet space: No
Addition: No
Conversion: No

11 Floor 2 - Living Room



Dimensions: 13'11" x 12'10"
Area: 178 sq. ft
Counted as living area: Yes

Heated: Yes
Finished: Yes
Enclosed: Yes
Contiguous: Yes
Permitted: Yes
Wet space: No
Addition: No
Conversion: No

12 Floor 2 - Patio



Dimensions: 31'8" x 22'1"
Area: 701 sq. ft
Counted as living area: No

Heated: No
Finished: No
Enclosed: No
Contiguous: Yes
Permitted: Yes
Wet space: No
Addition: No
Conversion: No

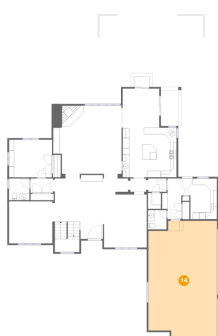
13 Floor 2 - Office



Dimensions: 13'1" x 11'5"
Area: 150 sq. ft
Counted as living area: Yes

Heated: Yes
Finished: Yes
Enclosed: Yes
Contiguous: Yes
Permitted: Yes
Wet space: No
Addition: No
Conversion: No

14 Floor 2 - Garage



Dimensions: 20'11" x 35'9"
Area: 747 sq. ft
Counted as living area: No

Heated: No
Finished: Yes
Enclosed: Yes
Contiguous: Yes
Permitted: Yes
Wet space: No
Addition: No
Conversion: No

849 Northwoods Road, Deerfield, Lake County, Illinois, United States, 60015

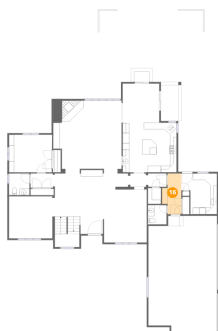
15 Floor 2 - Bath



Dimensions: 6'3" x 6'7"
Area: 41 sq. ft
Counted as living area: Yes

Heated: Yes
Finished: Yes
Enclosed: Yes
Contiguous: Yes
Permitted: Yes
Wet space: Yes
Addition: No
Conversion: No

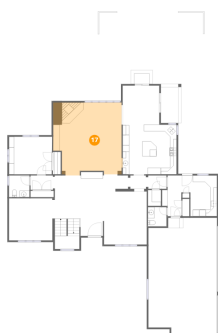
16 Floor 2 - Hall



Dimensions: 5'11" x 12'5"
Area: 73 sq. ft
Counted as living area: Yes

Heated: Yes
Finished: Yes
Enclosed: Yes
Contiguous: Yes
Permitted: Yes
Wet space: No
Addition: No
Conversion: No

17 Floor 2 - Family Room



Dimensions: 20'10" x 22'2"
Area: 462 sq. ft
Counted as living area: Yes

Heated: Yes
Finished: Yes
Enclosed: Yes
Contiguous: Yes
Permitted: Yes
Wet space: No
Addition: No
Conversion: No

849 Northwoods Road, Deerfield, Lake County, Illinois, United States, 60015

18 Floor 2 - Bath



Dimensions: 5'8" x 5'10"
Area: 33 sq. ft
Counted as living area: Yes

Heated: Yes
Finished: Yes
Enclosed: Yes
Contiguous: Yes
Permitted: Yes
Wet space: Yes
Addition: No
Conversion: No

19 Floor 2 - Laundry



Dimensions: 10'10" x 12'5"
Area: 135 sq. ft
Counted as living area: Yes

Heated: Yes
Finished: Yes
Enclosed: Yes
Contiguous: Yes
Permitted: Yes
Wet space: No
Addition: No
Conversion: No

20 Floor 2 - Hall



Dimensions: 19'0" x 4'5"
Area: 84 sq. ft
Counted as living area: Yes

Heated: Yes
Finished: Yes
Enclosed: Yes
Contiguous: Yes
Permitted: Yes
Wet space: No
Addition: No
Conversion: No

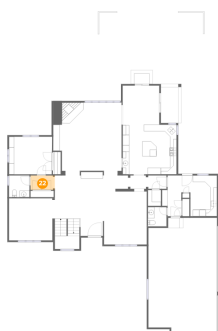
21 Floor 2 - Patio



Dimensions: 8'3" x 11'10"
Area: 98 sq. ft
Counted as living area: No

Heated: No
Finished: No
Enclosed: No
Contiguous: Yes
Permitted: Yes
Wet space: No
Addition: No
Conversion: No

22 Floor 2 - Hall



Dimensions: 7'5" x 4'4"
Area: 32 sq. ft
Counted as living area: Yes

Heated: Yes
Finished: Yes
Enclosed: Yes
Contiguous: Yes
Permitted: Yes
Wet space: No
Addition: No
Conversion: No

23 Floor 2 - Breakfast Room



Dimensions: 11'2" x 11'11"
Area: 132 sq. ft
Counted as living area: Yes

Heated: Yes
Finished: Yes
Enclosed: Yes
Contiguous: Yes
Permitted: Yes
Wet space: No
Addition: No
Conversion: No

24 Floor 2 - Kitchen



Dimensions: 16'5" x 15'1"
Area: 248 sq. ft
Counted as living area: Yes

Heated: Yes
Finished: Yes
Enclosed: Yes
Contiguous: Yes
Permitted: Yes
Wet space: No
Addition: No
Conversion: No

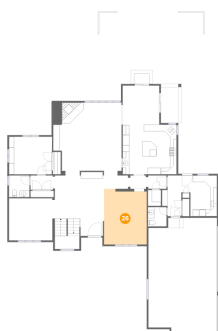
25 Floor 2 - Foyer



Dimensions: 15'0" x 19'5"
Area: 291 sq. ft
Counted as living area: Yes

Heated: Yes
Finished: Yes
Enclosed: Yes
Contiguous: Yes
Permitted: Yes
Wet space: No
Addition: No
Conversion: No

26 Floor 2 - Dining Room



Dimensions: 13'0" x 17'0"
Area: 221 sq. ft
Counted as living area: Yes

Heated: Yes
Finished: Yes
Enclosed: Yes
Contiguous: Yes
Permitted: Yes
Wet space: No
Addition: No
Conversion: No

27 Floor 3 - Bath



Dimensions: 4'5" x 5'8"
Area: 25 sq. ft
Counted as living area: Yes

Heated: Yes
Finished: Yes
Enclosed: Yes
Contiguous: Yes
Permitted: Yes
Wet space: Yes
Addition: No
Conversion: No

28 Floor 3 - Bath



Dimensions: 5'4" x 5'8"
Area: 30 sq. ft
Counted as living area: Yes

Heated: Yes
Finished: Yes
Enclosed: Yes
Contiguous: Yes
Permitted: Yes
Wet space: Yes
Addition: No
Conversion: No

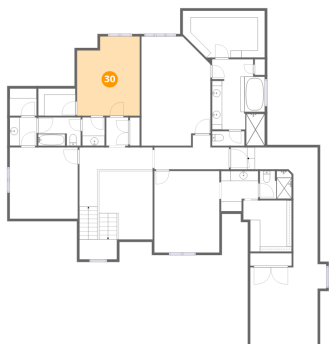
29 Floor 3 - Bath



Dimensions: 6'4" x 5'7"
Area: 35 sq. ft
Counted as living area: Yes

Heated: Yes
Finished: Yes
Enclosed: Yes
Contiguous: Yes
Permitted: Yes
Wet space: Yes
Addition: No
Conversion: No

30 Floor 3 - Bedroom



Dimensions: 12'7" x 15'10"
Area: 199 sq. ft
Counted as living area: Yes

Heated: Yes
Finished: Yes
Enclosed: Yes
Contiguous: Yes
Permitted: Yes
Wet space: No
Addition: No
Conversion: No

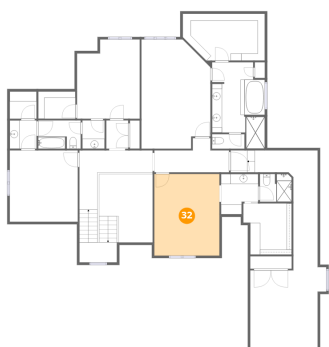
31 Floor 3 - Hall



Dimensions: 14'8" x 11'10"
Area: 173 sq. ft
Counted as living area: Yes

Heated: Yes
Finished: Yes
Enclosed: Yes
Contiguous: Yes
Permitted: Yes
Wet space: No
Addition: No
Conversion: No

32 Floor 3 - Bedroom



Dimensions: 13'0" x 16'4"
Area: 212 sq. ft
Counted as living area: Yes

Heated: Yes
Finished: Yes
Enclosed: Yes
Contiguous: Yes
Permitted: Yes
Wet space: No
Addition: No
Conversion: No

33 Floor 3 - W.I.C.



Dimensions: 5'4" x 5'5"
Area: 29 sq. ft
Counted as living area: Yes

Heated: Yes
Finished: Yes
Enclosed: Yes
Contiguous: Yes
Permitted: Yes
Wet space: No
Addition: No
Conversion: No

34 Floor 3 - Primary Bedroom



Dimensions: 13'10" x 21'10"
Area: 302 sq. ft
Counted as living area: Yes

Heated: Yes
Finished: Yes
Enclosed: Yes
Contiguous: Yes
Permitted: Yes
Wet space: No
Addition: No
Conversion: No

35 Floor 3 - Hall



Dimensions: 4'5" x 5'8"
Area: 25 sq. ft
Counted as living area: Yes

Heated: Yes
Finished: Yes
Enclosed: Yes
Contiguous: Yes
Permitted: Yes
Wet space: No
Addition: No
Conversion: No

36 Floor 3 - Bath



Dimensions: 6'6" x 2'11"
Area: 19 sq. ft
Counted as living area: Yes

Heated: Yes
Finished: Yes
Enclosed: Yes
Contiguous: Yes
Permitted: Yes
Wet space: Yes
Addition: No
Conversion: No

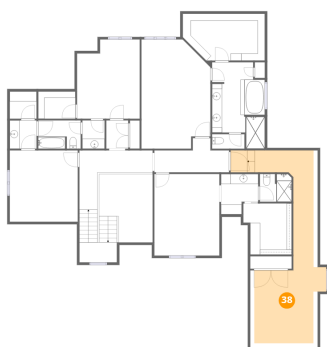
37 Floor 3 - W.I.C.



Dimensions: 16'5" x 9'5"
Area: 154 sq. ft
Counted as living area: Yes

Heated: Yes
Finished: Yes
Enclosed: Yes
Contiguous: Yes
Permitted: Yes
Wet space: No
Addition: No
Conversion: No

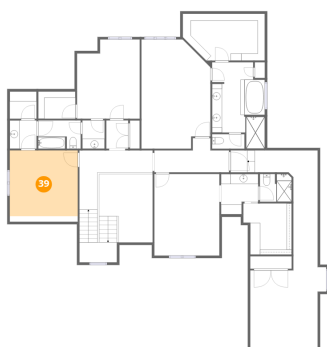
38 Floor 3 - Den



Dimensions: 17'5" x 39'7"
Area: 689 sq. ft
Counted as living area: Yes

Heated: Yes
Finished: Yes
Enclosed: Yes
Contiguous: Yes
Permitted: Yes
Wet space: No
Addition: No
Conversion: No

39 Floor 3 - Bedroom



Dimensions: 13'7" x 14'3"
Area: 194 sq. ft
Counted as living area: Yes

Heated: Yes
Finished: Yes
Enclosed: Yes
Contiguous: Yes
Permitted: Yes
Wet space: No
Addition: No
Conversion: No

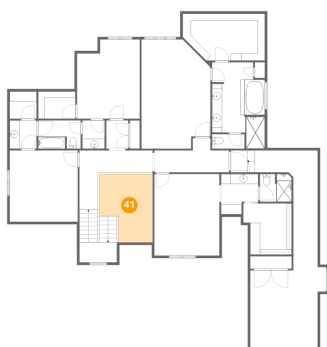
40 Floor 3 - W.I.C.



Dimensions: 9'8" x 10'3"
Area: 99 sq. ft
Counted as living area: Yes

Heated: Yes
Finished: Yes
Enclosed: Yes
Contiguous: Yes
Permitted: Yes
Wet space: No
Addition: No
Conversion: No

41 Floor 3 - Open To Below



Dimensions: 10'9" x 13'8"
Area: 147 sq. ft
Counted as living area: No

Heated: No
Finished: No
Enclosed: No
Contiguous: Yes
Permitted: No
Wet space: No
Addition: No
Conversion: No

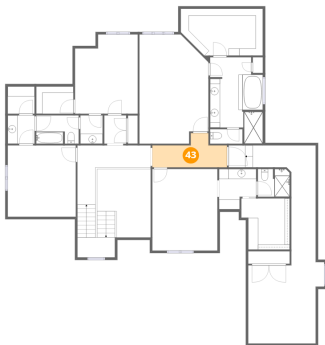
42 Floor 3 - Bath



Dimensions: 8'6" x 5'8"
Area: 48 sq. ft
Counted as living area: Yes

Heated: Yes
Finished: Yes
Enclosed: Yes
Contiguous: Yes
Permitted: Yes
Wet space: Yes
Addition: No
Conversion: No

43 Floor 3 - Hall



Dimensions: 14'11" x 6'10"
Area: 102 sq. ft
Counted as living area: Yes

Heated: Yes
Finished: Yes
Enclosed: Yes
Contiguous: Yes
Permitted: Yes
Wet space: No
Addition: No
Conversion: No

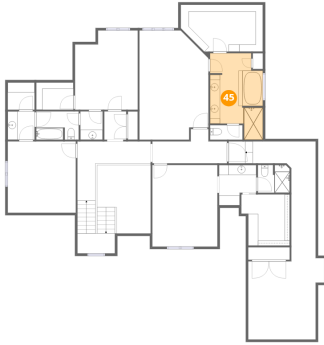
44 Floor 3 - W.I.C.



Dimensions: 7'5" x 5'5"
Area: 40 sq. ft
Counted as living area: Yes

Heated: Yes
Finished: Yes
Enclosed: Yes
Contiguous: Yes
Permitted: Yes
Wet space: No
Addition: No
Conversion: No

45 Floor 3 - Primary Bath



Dimensions: 10'7" x 17'3"
Area: 182 sq. ft
Counted as living area: Yes

Heated: Yes
Finished: Yes
Enclosed: Yes
Contiguous: Yes
Permitted: Yes
Wet space: Yes
Addition: No
Conversion: No

46 Floor 3 - Bath



Dimensions: 7'5" x 8'1"
Area: 60 sq. ft
Counted as living area: Yes

Heated: Yes
Finished: Yes
Enclosed: Yes
Contiguous: Yes
Permitted: Yes
Wet space: Yes
Addition: No
Conversion: No