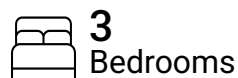


Total Area: 980 sq. ft

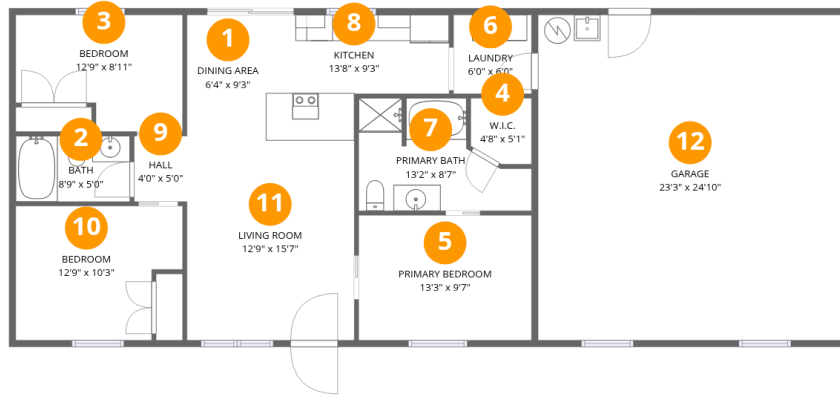
1st Floor: 980 sq. ft

Excluded: Garage 578 sq. ft, Walls: 101 sq. ft

Property summary



351 Rippy Ridge Road, Normandy, Bedford County, Tennessee, United States, 37360



Room dimensions

Floor 1

Total:980sqft

Excluded: 578sqft

#		Dimensions	sqft	Counted as living area
1	Dining Area	6'4" x 9'3"	59 sq. ft	Yes
2	Bath	8'9" x 5'0"	44 sq. ft	Yes
3	Bedroom	12'9" x 8'11"	114 sq. ft	Yes
4	W.I.C.	4'8" x 5'1"	23 sq. ft	Yes
5	Primary Bedroom	13'3" x 9'7"	126 sq. ft	Yes
6	Laundry	6'0" x 6'0"	36 sq. ft	Yes
7	Primary Bath	13'2" x 8'7"	113 sq. ft	Yes
8	Kitchen	13'8" x 9'3"	127 sq. ft	Yes
9	Hall	4'0" x 5'0"	20 sq. ft	Yes
10	Bedroom	12'9" x 10'3"	131 sq. ft	Yes
11	Living Room	12'9" x 15'7"	199 sq. ft	Yes

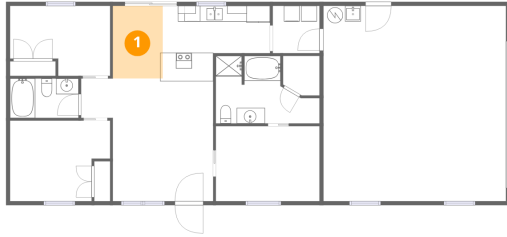
Home data report

**351 Rippy Ridge Road, Normandy, Bedford County,
Tennessee, United States, 37360**



#		Dimensions	sqft	Counted as living area
12	Garage	23'3" x 24'10"	578 sq. ft	No

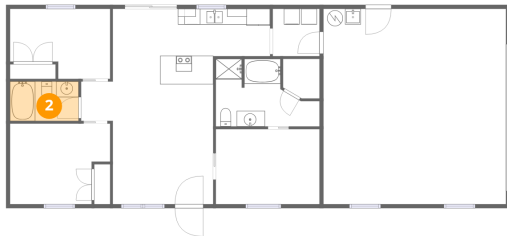
1 Floor 1 - Dining Area



Dimensions: 6'4" x 9'3"
Area: 59 sq. ft
Counted as living area: Yes

Heated: Yes
Finished: Yes
Enclosed: Yes
Contiguous: Yes
Permitted: Yes
Wet space: No
Addition: No
Conversion: No

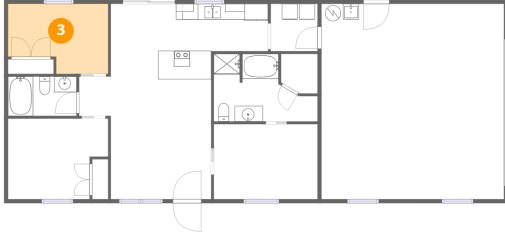
2 Floor 1 - Bath



Dimensions: 8'9" x 5'0"
Area: 44 sq. ft
Counted as living area: Yes

Heated: Yes
Finished: Yes
Enclosed: Yes
Contiguous: Yes
Permitted: Yes
Wet space: Yes
Addition: No
Conversion: No

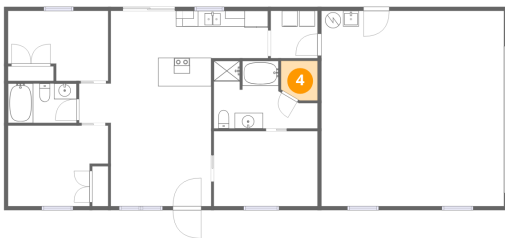
3 Floor 1 - Bedroom



Dimensions: 12'9" x 8'11"
Area: 114 sq. ft
Counted as living area: Yes

Heated: Yes
Finished: Yes
Enclosed: Yes
Contiguous: Yes
Permitted: Yes
Wet space: No
Addition: No
Conversion: No

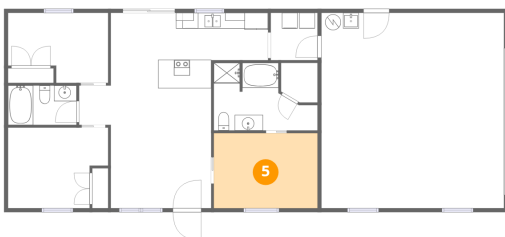
4 Floor 1 - W.I.C.



Dimensions: 4'8" x 5'1"
Area: 23 sq. ft
Counted as living area: Yes

Heated: Yes
Finished: Yes
Enclosed: Yes
Contiguous: Yes
Permitted: Yes
Wet space: No
Addition: No
Conversion: No

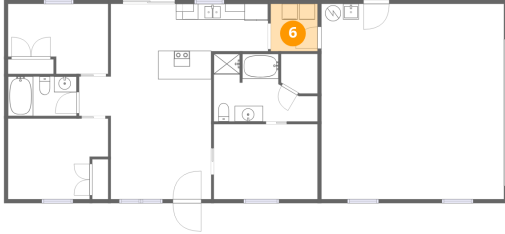
5 Floor 1 - Primary Bedroom



Dimensions: 13'3" x 9'7"
Area: 126 sq. ft
Counted as living area: Yes

Heated: Yes
Finished: Yes
Enclosed: Yes
Contiguous: Yes
Permitted: Yes
Wet space: No
Addition: No
Conversion: No

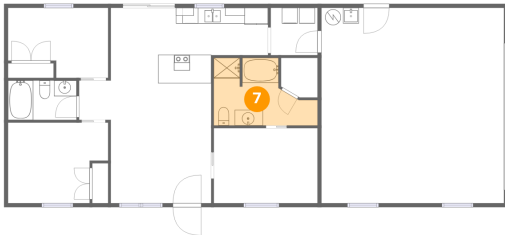
6 Floor 1 - Laundry



Dimensions: 6'0" x 6'0"
Area: 36 sq. ft
Counted as living area: Yes

Heated: Yes
Finished: Yes
Enclosed: Yes
Contiguous: Yes
Permitted: Yes
Wet space: No
Addition: No
Conversion: No

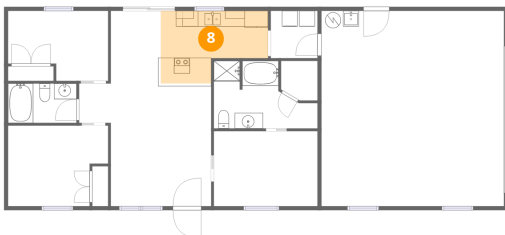
7 Floor 1 - Primary Bath



Dimensions: 13'2" x 8'7"
Area: 113 sq. ft
Counted as living area: Yes

Heated: Yes
Finished: Yes
Enclosed: Yes
Contiguous: Yes
Permitted: Yes
Wet space: Yes
Addition: No
Conversion: No

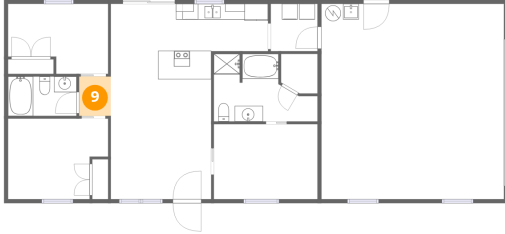
8 Floor 1 - Kitchen



Dimensions: 13'8" x 9'3"
Area: 127 sq. ft
Counted as living area: Yes

Heated: Yes
Finished: Yes
Enclosed: Yes
Contiguous: Yes
Permitted: Yes
Wet space: No
Addition: No
Conversion: No

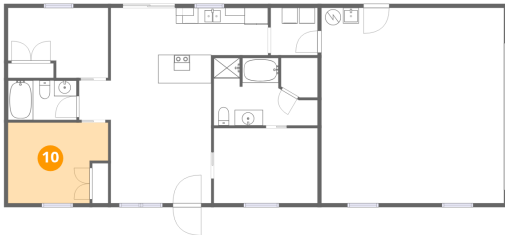
9 Floor 1 - Hall



Dimensions: 4'0" x 5'0"
Area: 20 sq. ft
Counted as living area: Yes

Heated: Yes
Finished: Yes
Enclosed: Yes
Contiguous: Yes
Permitted: Yes
Wet space: No
Addition: No
Conversion: No

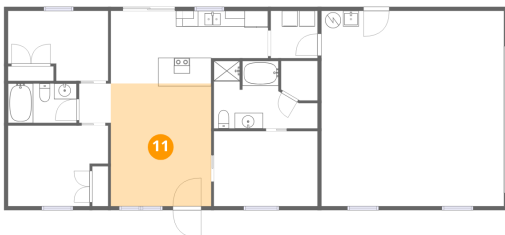
10 Floor 1 - Bedroom



Dimensions: 12'9" x 10'3"
Area: 131 sq. ft
Counted as living area: Yes

Heated: Yes
Finished: Yes
Enclosed: Yes
Contiguous: Yes
Permitted: Yes
Wet space: No
Addition: No
Conversion: No

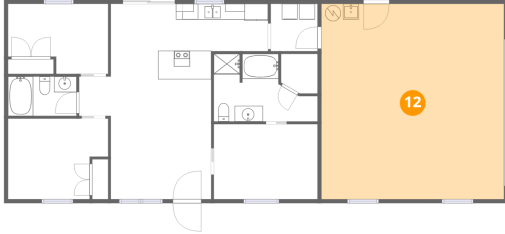
11 Floor 1 - Living Room



Dimensions: 12'9" x 15'7"
Area: 199 sq. ft
Counted as living area: Yes

Heated: Yes
Finished: Yes
Enclosed: Yes
Contiguous: Yes
Permitted: Yes
Wet space: No
Addition: No
Conversion: No

12 Floor 1 - Garage



Dimensions: 23'3" x 24'10"
Area: 578 sq. ft
Counted as living area: No

Heated: No
Finished: No
Enclosed: Yes
Contiguous: Yes
Permitted: Yes
Wet space: No
Addition: No
Conversion: No