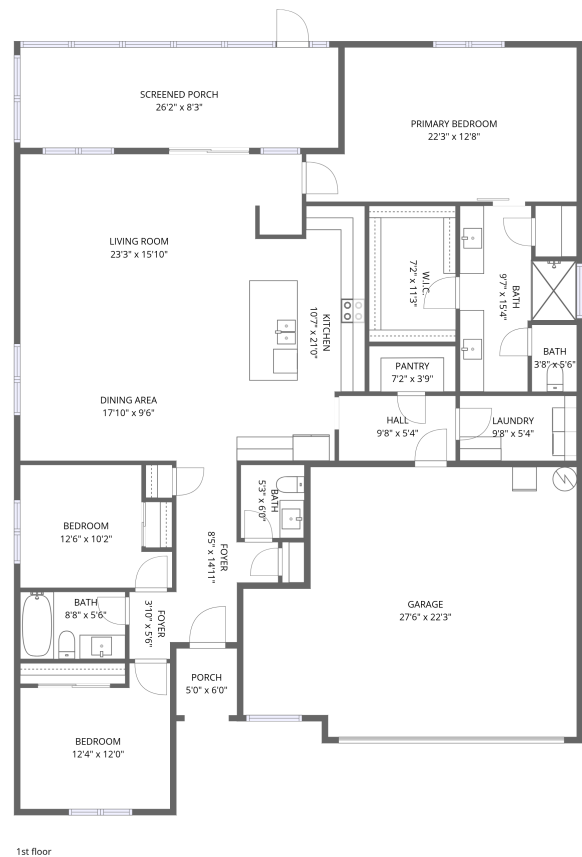


4430 Cactus Canyon Drive, Pahrump, Nye County, Nevada,
United States, 89061




Total Area: 1821 sq. ft

1st Floor: 1821 sq. ft

Excluded: Garage 544 sq. ft, Screened porch 217 sq. ft, Porch 30 sq. ft, Walls: 156 sq. ft

Property summary

 1 Floors

 3 Bedrooms

 2 Bathrooms

Home data report

**4430 Cactus Canyon Drive, Pahrump, Nye County, Nevada,
United States, 89061**



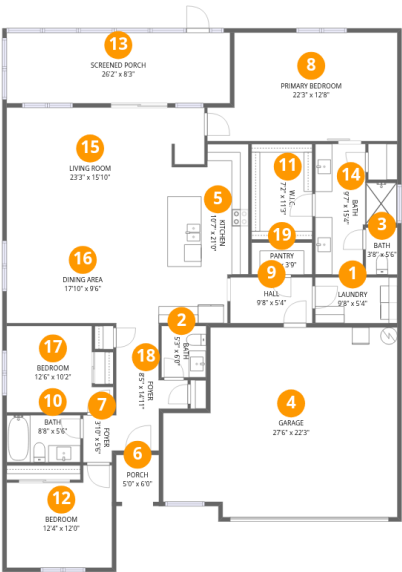
1
Half baths



1
Garages

Home data report

4430 Cactus Canyon Drive, Pahrump, Nye County, Nevada,
United States, 89061



Room dimensions

Floor 1 Total:1821sqft Excluded: 791sqft

#		Dimensions	sqft	Counted as living area
1	Laundry	9'8" x 5'4"	52 sq. ft	Yes
2	Bath	5'3" x 6'0"	32 sq. ft	Yes
3	Bath	3'8" x 5'6"	20 sq. ft	Yes
4	Garage	27'6" x 22'3"	544 sq. ft	No
5	Kitchen	10'7" x 21'0"	192 sq. ft	Yes
6	Porch	5'0" x 6'0"	30 sq. ft	No
7	Foyer	3'10" x 5'6"	21 sq. ft	Yes
8	Primary Bedroom	22'3" x 12'8"	256 sq. ft	Yes
9	Hall	9'8" x 5'4"	52 sq. ft	Yes
10	Bath	8'8" x 5'6"	48 sq. ft	Yes
11	W.I.C.	7'2" x 11'3"	80 sq. ft	Yes

Home data report

**4430 Cactus Canyon Drive, Pahrump, Nye County, Nevada,
United States, 89061**

#		Dimensions	sqft	Counted as living area
12	Bedroom	12'4" x 12'0"	130 sq. ft	Yes
13	Screened Porch	26'2" x 8'3"	217 sq. ft	No
14	Bath	9'7" x 15'4"	107 sq. ft	Yes
15	Living Room	23'3" x 15'10"	318 sq. ft	Yes
16	Dining Area	17'10" x 9'6"	169 sq. ft	Yes
17	Bedroom	12'6" x 10'2"	109 sq. ft	Yes
18	Foyer	8'5" x 14'11"	86 sq. ft	Yes
19	Pantry	7'2" x 3'9"	27 sq. ft	Yes

1 Floor 1 - Laundry



Dimensions: 9'8" x 5'4"
Area: 52 sq. ft
Counted as living area: Yes

Heated: Yes
Finished: Yes
Enclosed: Yes
Contiguous: Yes
Permitted: Yes
Wet space: No
Addition: No
Conversion: No

2 Floor 1 - Bath



Dimensions: 5'3" x 6'0"
Area: 32 sq. ft
Counted as living area: Yes

Heated: Yes
Finished: Yes
Enclosed: Yes
Contiguous: Yes
Permitted: Yes
Wet space: Yes
Addition: No
Conversion: No

Home data report

4430 Cactus Canyon Drive, Pahrump, Nye County, Nevada,
United States, 89061

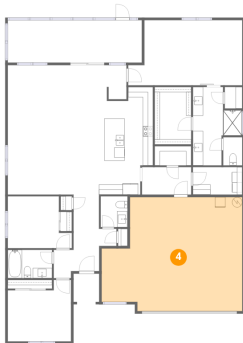
3 Floor 1 - Bath



Dimensions: 3'8" x 5'6"
Area: 20 sq. ft
Counted as living area: Yes

Heated: Yes
Finished: Yes
Enclosed: Yes
Contiguous: Yes
Permitted: Yes
Wet space: Yes
Addition: No
Conversion: No

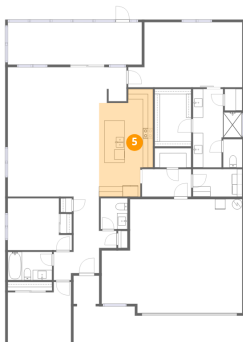
4 Floor 1 - Garage



Dimensions: 27'6" x 22'3"
Area: 544 sq. ft
Counted as living area: No

Heated: No
Finished: No
Enclosed: Yes
Contiguous: Yes
Permitted: Yes
Wet space: No
Addition: No
Conversion: No

5 Floor 1 - Kitchen



Dimensions: 10'7" x 21'0"
Area: 192 sq. ft
Counted as living area: Yes

Heated: Yes
Finished: Yes
Enclosed: Yes
Contiguous: Yes
Permitted: Yes
Wet space: No
Addition: No
Conversion: No

Home data report

4430 Cactus Canyon Drive, Pahrump, Nye County, Nevada,
United States, 89061

6 Floor 1 - Porch



Dimensions: 5'0" x 6'0"
Area: 30 sq. ft
Counted as living area: No

Heated: No
Finished: No
Enclosed: No
Contiguous: Yes
Permitted: Yes
Wet space: No
Addition: No
Conversion: No

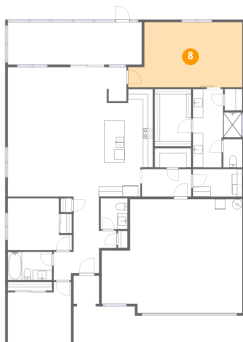
7 Floor 1 - Foyer



Dimensions: 3'10" x 5'6"
Area: 21 sq. ft
Counted as living area: Yes

Heated: Yes
Finished: Yes
Enclosed: Yes
Contiguous: Yes
Permitted: Yes
Wet space: No
Addition: No
Conversion: No

8 Floor 1 - Primary Bedroom



Dimensions: 22'3" x 12'8"
Area: 256 sq. ft
Counted as living area: Yes

Heated: Yes
Finished: Yes
Enclosed: Yes
Contiguous: Yes
Permitted: Yes
Wet space: No
Addition: No
Conversion: No

Home data report

4430 Cactus Canyon Drive, Pahrump, Nye County, Nevada,
United States, 89061

9 Floor 1 - Hall



Dimensions: 9'8" x 5'4"
Area: 52 sq. ft
Counted as living area: Yes

Heated: Yes
Finished: Yes
Enclosed: Yes
Contiguous: Yes
Permitted: Yes
Wet space: No
Addition: No
Conversion: No

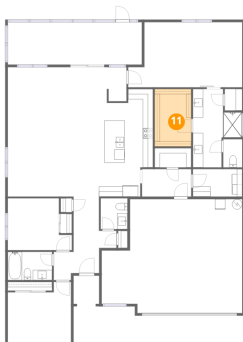
10 Floor 1 - Bath



Dimensions: 8'8" x 5'6"
Area: 48 sq. ft
Counted as living area: Yes

Heated: Yes
Finished: Yes
Enclosed: Yes
Contiguous: Yes
Permitted: Yes
Wet space: Yes
Addition: No
Conversion: No

11 Floor 1 - W.I.C.



Dimensions: 7'2" x 11'3"
Area: 80 sq. ft
Counted as living area: Yes

Heated: Yes
Finished: Yes
Enclosed: Yes
Contiguous: Yes
Permitted: Yes
Wet space: No
Addition: No
Conversion: No

Home data report

4430 Cactus Canyon Drive, Pahrump, Nye County, Nevada,
United States, 89061

12 Floor 1 - Bedroom



Dimensions: 12'4" x 12'0"
Area: 130 sq. ft
Counted as living area: Yes

Heated: Yes
Finished: Yes
Enclosed: Yes
Contiguous: Yes
Permitted: Yes
Wet space: No
Addition: No
Conversion: No

13 Floor 1 - Screened Porch



Dimensions: 26'2" x 8'3"
Area: 217 sq. ft
Counted as living area: No

Heated: No
Finished: No
Enclosed: No
Contiguous: Yes
Permitted: Yes
Wet space: No
Addition: No
Conversion: No

14 Floor 1 - Bath



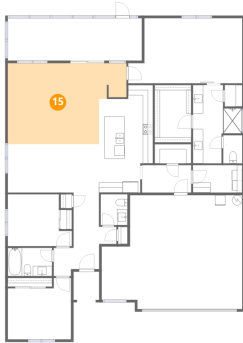
Dimensions: 9'7" x 15'4"
Area: 107 sq. ft
Counted as living area: Yes

Heated: Yes
Finished: Yes
Enclosed: Yes
Contiguous: Yes
Permitted: Yes
Wet space: Yes
Addition: No
Conversion: No

Home data report

4430 Cactus Canyon Drive, Pahrump, Nye County, Nevada,
United States, 89061

15 Floor 1 - Living Room



Dimensions: 23'3" x 15'10"
Area: 318 sq. ft
Counted as living area: Yes

Heated: Yes
Finished: Yes
Enclosed: Yes
Contiguous: Yes
Permitted: Yes
Wet space: No
Addition: No
Conversion: No

16 Floor 1 - Dining Area



Dimensions: 17'10" x 9'6"
Area: 169 sq. ft
Counted as living area: Yes

Heated: Yes
Finished: Yes
Enclosed: Yes
Contiguous: Yes
Permitted: Yes
Wet space: No
Addition: No
Conversion: No

17 Floor 1 - Bedroom



Dimensions: 12'6" x 10'2"
Area: 109 sq. ft
Counted as living area: Yes

Heated: Yes
Finished: Yes
Enclosed: Yes
Contiguous: Yes
Permitted: Yes
Wet space: No
Addition: No
Conversion: No

Home data report

4430 Cactus Canyon Drive, Pahrump, Nye County, Nevada,
United States, 89061

18 Floor 1 - Foyer



Dimensions: 8'5" x 14'11"
Area: 86 sq. ft
Counted as living area: Yes

Heated: Yes
Finished: Yes
Enclosed: Yes
Contiguous: Yes
Permitted: Yes
Wet space: No
Addition: No
Conversion: No

19 Floor 1 - Pantry



Dimensions: 7'2" x 3'9"
Area: 27 sq. ft
Counted as living area: Yes

Heated: Yes
Finished: Yes
Enclosed: Yes
Contiguous: Yes
Permitted: Yes
Wet space: No
Addition: No
Conversion: No