

TOTAL: 939 sq. ft

1st floor: 568 sq. ft, 2nd floor: 371 sq. ft

EXCLUDED AREAS: GARAGE: 588 sq. ft, LIVING ROOM: 677 sq. ft, DINING AREA: 414 sq. ft,
LOW CEILING: 67 sq. ft, WALLS: 168 sq. ft

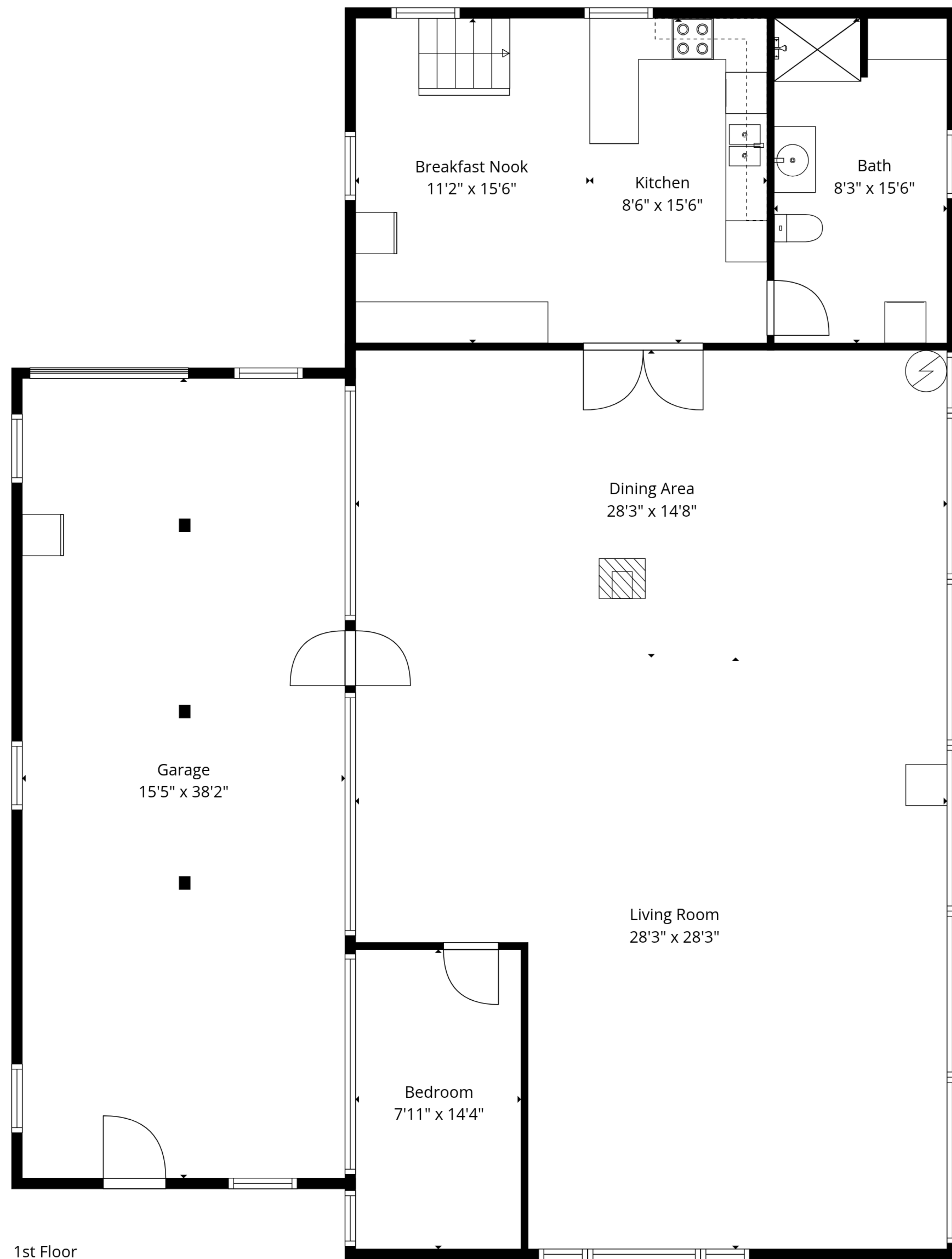


Primary Bedroom
28'3" x 15'6"

TOTAL: 939 sq. ft

1st floor: 568 sq. ft, 2nd floor: 371 sq. ft

EXCLUDED AREAS: GARAGE: 588 sq. ft, LIVING ROOM: 677 sq. ft, DINING AREA: 414 sq. ft,
LOW CEILING: 67 sq. ft, WALLS: 168 sq. ft



TOTAL: 939 sq. ft
 1st floor: 568 sq. ft, 2nd floor: 371 sq. ft
 EXCLUDED AREAS: GARAGE: 588 sq. ft, LIVING ROOM: 677 sq. ft, DINING AREA: 414 sq. ft,
 LOW CEILING: 67 sq. ft, WALLS: 168 sq. ft