

Home data report

6717 Middle Road, Middletown, Frederick County, Virginia,
United States, 22645



Total Area: 1481 sq. ft

Basement: 0 sq. ft, 1st Floor: 1481 sq. ft

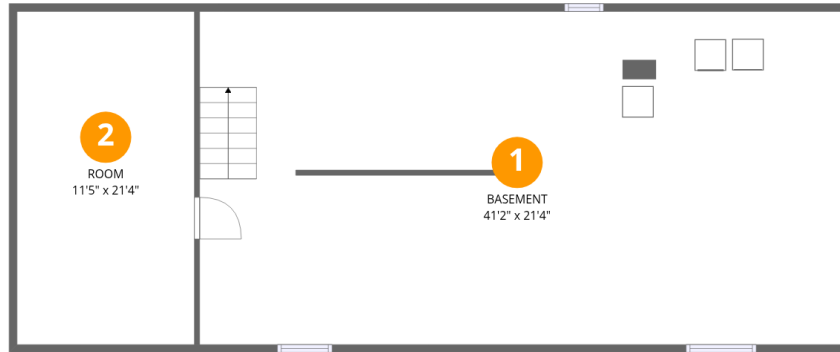
Excluded: Basement 885 sq. ft, Room 243 sq. ft, Deck 219 sq. ft, Fireplace 15 sq. ft, Walls:
160 sq. ft

Property summary



Home data report

6717 Middle Road, Middletown, Frederick County, Virginia,
United States, 22645



Room dimensions

Floor 1 Below grade

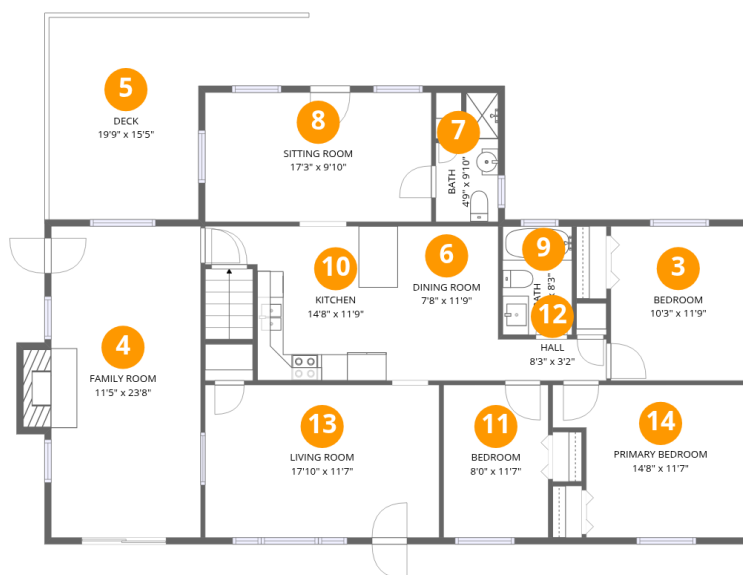
Total:0sqft

Excluded: 1128sqft

#		Dimensions	sqft	Counted as living area
1	Basement	41'2" x 21'4"	878 sq. ft	No
2	Room	11'5" x 21'4"	243 sq. ft	No

Home data report

6717 Middle Road, Middletown, Frederick County, Virginia,
United States, 22645



Room dimensions

Floor 2

Total:1481sqft Excluded: 234sqft

#		Dimensions	sqft	Counted as living area
3	Bedroom	10'3" x 11'9"	120 sq. ft	Yes
4	Family Room	11'5" x 23'8"	282 sq. ft	Yes
5	Deck	19'9" x 15'5"	219 sq. ft	No
6	Dining Room	7'8" x 11'9"	90 sq. ft	Yes
7	Bath	4'9" x 9'10"	38 sq. ft	Yes
8	Sitting Room	17'3" x 9'10"	169 sq. ft	Yes
9	Bath	5'3" x 8'3"	44 sq. ft	Yes
10	Kitchen	14'8" x 11'9"	137 sq. ft	Yes
11	Bedroom	8'0" x 11'7"	92 sq. ft	Yes
12	Hall	8'3" x 3'2"	26 sq. ft	Yes
13	Living Room	17'10" x 11'7"	207 sq. ft	Yes

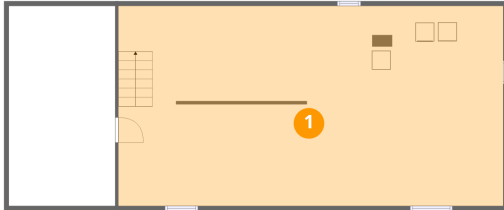
Home data report

**6717 Middle Road, Middletown, Frederick County, Virginia,
United States, 22645**

#		Dimensions	sqft	Counted as living area
14	Primary Bedroom	14'8" x 11'7"	149 sq. ft	Yes

6717 Middle Road, Middletown, Frederick County, Virginia,
United States, 22645

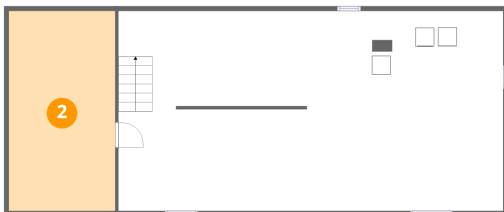
1 Floor 1 - Basement



Dimensions: 41'2" x 21'4"
Area: 878 sq. ft
Counted as living area: No

Heated: Yes
Finished: No
Enclosed: Yes
Contiguous: Yes
Permitted: Yes
Wet space: No
Addition: No
Conversion: No

2 Floor 1 - Room



Dimensions: 11'5" x 21'4"
Area: 243 sq. ft
Counted as living area: No

Heated: Yes
Finished: No
Enclosed: Yes
Contiguous: Yes
Permitted: Yes
Wet space: No
Addition: No
Conversion: No

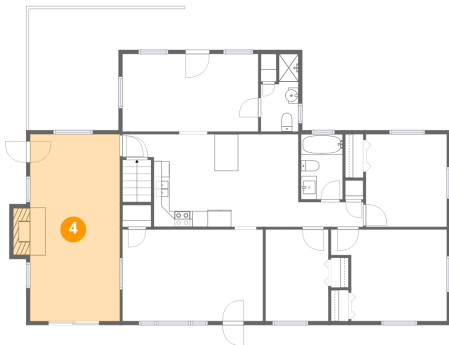
3 Floor 2 - Bedroom



Dimensions: 10'3" x 11'9"
Area: 120 sq. ft
Counted as living area: Yes

Heated: Yes
Finished: Yes
Enclosed: Yes
Contiguous: Yes
Permitted: Yes
Wet space: No
Addition: No
Conversion: No

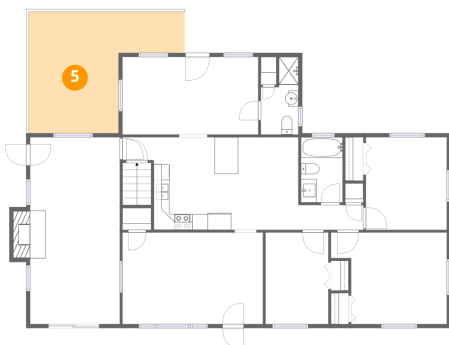
4 Floor 2 - Family Room



Dimensions: 11'5" x 23'8"
Area: 282 sq. ft
Counted as living area: Yes

Heated: Yes
Finished: Yes
Enclosed: Yes
Contiguous: Yes
Permitted: Yes
Wet space: No
Addition: No
Conversion: No

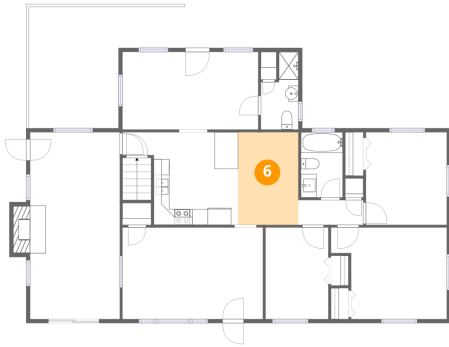
5 Floor 2 - Deck



Dimensions: 19'9" x 15'5"
Area: 219 sq. ft
Counted as living area: No

Heated: No
Finished: No
Enclosed: No
Contiguous: Yes
Permitted: Yes
Wet space: No
Addition: No
Conversion: No

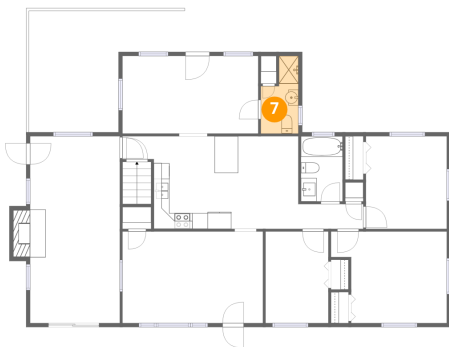
6 Floor 2 - Dining Room



Dimensions: 7'8" x 11'9"
Area: 90 sq. ft
Counted as living area: Yes

Heated: Yes
Finished: Yes
Enclosed: Yes
Contiguous: Yes
Permitted: Yes
Wet space: No
Addition: No
Conversion: No

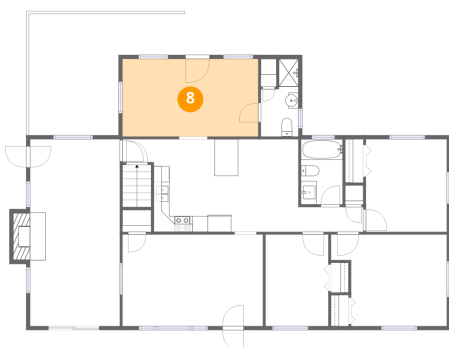
7 Floor 2 - Bath



Dimensions: 4'9" x 9'10"
Area: 38 sq. ft
Counted as living area: Yes

Heated: Yes
Finished: Yes
Enclosed: Yes
Contiguous: Yes
Permitted: Yes
Wet space: Yes
Addition: No
Conversion: No

8 Floor 2 - Sitting Room



Dimensions: 17'3" x 9'10"
Area: 169 sq. ft
Counted as living area: Yes

Heated: Yes
Finished: Yes
Enclosed: Yes
Contiguous: Yes
Permitted: Yes
Wet space: No
Addition: No
Conversion: No

9 Floor 2 - Bath



Dimensions: 5'3" x 8'3"
Area: 44 sq. ft
Counted as living area: Yes

Heated: Yes
Finished: Yes
Enclosed: Yes
Contiguous: Yes
Permitted: Yes
Wet space: Yes
Addition: No
Conversion: No

10 Floor 2 - Kitchen



Dimensions: 14'8" x 11'9"
Area: 137 sq. ft
Counted as living area: Yes

Heated: Yes
Finished: Yes
Enclosed: Yes
Contiguous: Yes
Permitted: Yes
Wet space: No
Addition: No
Conversion: No

11 Floor 2 - Bedroom



Dimensions: 8'0" x 11'7"
Area: 92 sq. ft
Counted as living area: Yes

Heated: Yes
Finished: Yes
Enclosed: Yes
Contiguous: Yes
Permitted: Yes
Wet space: No
Addition: No
Conversion: No

12 Floor 2 - Hall



Dimensions: 8'3" x 3'2"
Area: 26 sq. ft
Counted as living area: Yes

Heated: Yes
Finished: Yes
Enclosed: Yes
Contiguous: Yes
Permitted: Yes
Wet space: No
Addition: No
Conversion: No

13 Floor 2 - Living Room



Dimensions: 17'10" x 11'7"
Area: 207 sq. ft
Counted as living area: Yes

Heated: Yes
Finished: Yes
Enclosed: Yes
Contiguous: Yes
Permitted: Yes
Wet space: No
Addition: No
Conversion: No

14 Floor 2 - Primary Bedroom



Dimensions: 14'8" x 11'7"
Area: 149 sq. ft
Counted as living area: Yes

Heated: Yes
Finished: Yes
Enclosed: Yes
Contiguous: Yes
Permitted: Yes
Wet space: No
Addition: No
Conversion: No