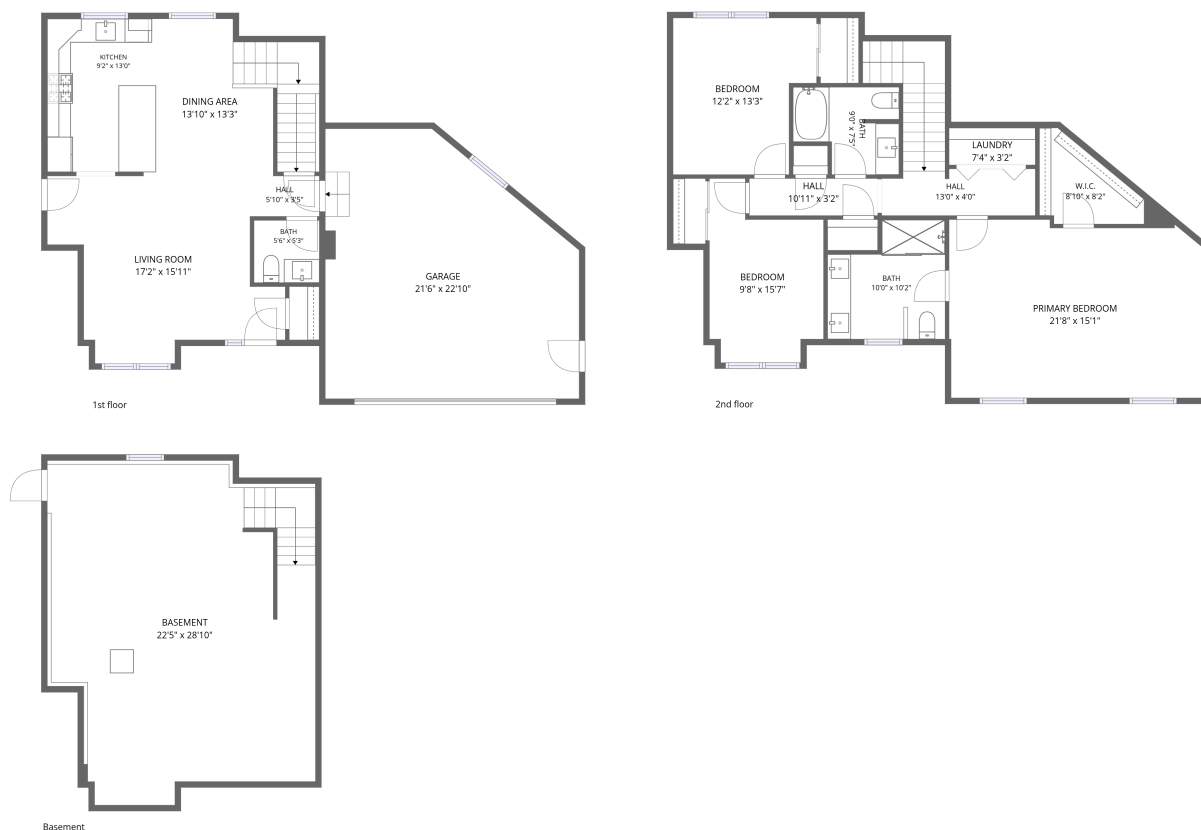


Home data report

57 Hardy Road, Londonderry, Rockingham County, New Hampshire, United States, 03053



Total Area: 1641 sq. ft

Basement: 0 sq. ft, 1st Floor: 602 sq. ft, 2nd Floor: 1039 sq. ft

Excluded: Basement 594 sq. ft, Garage 428 sq. ft, Walls: 209 sq. ft

Property summary

 **3** Floors

 **3** Bedrooms

 **2** Bathrooms

Home data report

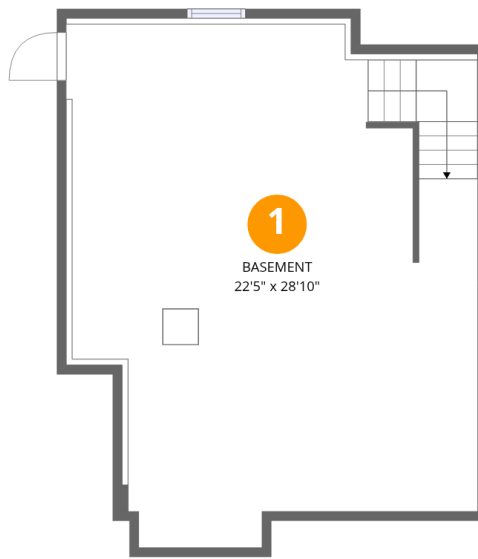
57 Hardy Road, Londonderry, Rockingham County, New Hampshire, United States, 03053

 **1**
Half baths

 **1**
Garages

Home data report

57 Hardy Road, Londonderry, Rockingham County, New Hampshire, United States, 03053



Room dimensions

Floor 1 Below grade

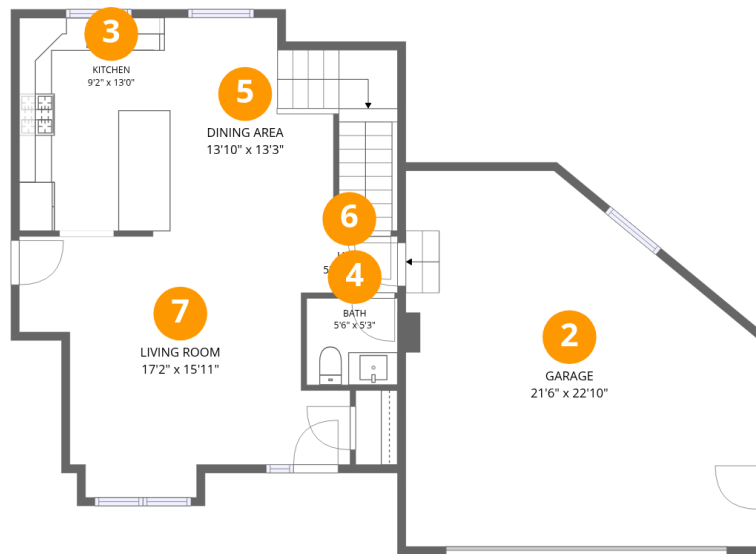
Total:0sqft

Excluded: 594sqft

#		Dimensions	sqft	Counted as living area
1	Basement	22'5" x 28'10"	594 sq. ft	No

Home data report

57 Hardy Road, Londonderry, Rockingham County, New Hampshire, United States, 03053



Room dimensions

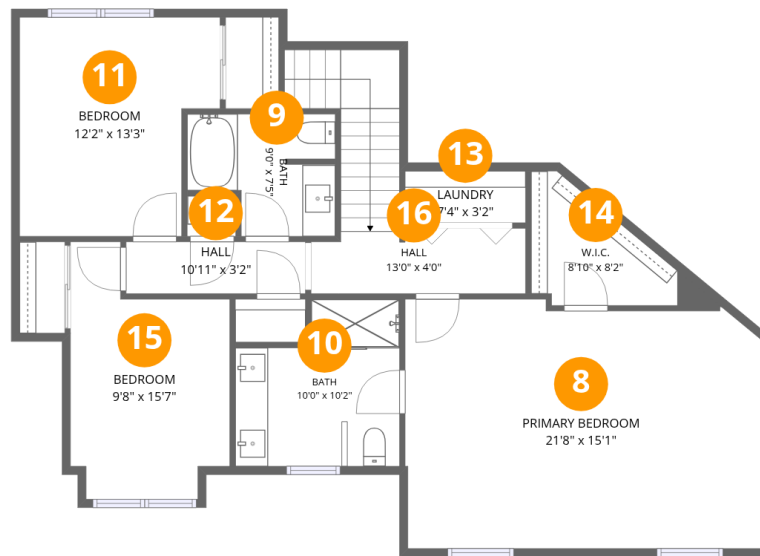
Floor 2

Total:602sqft

Excluded: 428sqft

#		Dimensions	sqft	Counted as living area
2	Garage	21'6" x 22'10"	428 sq. ft	No
3	Kitchen	9'2" x 13'0"	119 sq. ft	Yes
4	Bath	5'6" x 5'3"	29 sq. ft	Yes
5	Dining Area	13'10" x 13'3"	167 sq. ft	Yes
6	Hall	5'10" x 3'5"	20 sq. ft	Yes
7	Living Room	17'2" x 15'11"	241 sq. ft	Yes

57 Hardy Road, Londonderry, Rockingham County, New Hampshire, United States, 03053



Room dimensions

Floor 3

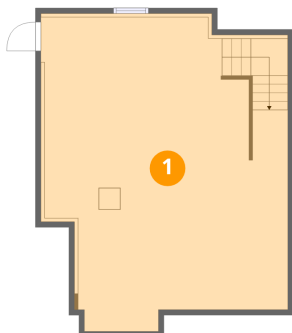
Total:1039sqft

Excluded: 0sqft

#		Dimensions	sqft	Counted as living area
8	Primary Bedroom	21'8" x 15'1"	316 sq. ft	Yes
9	Bath	9'0" x 7'5"	56 sq. ft	Yes
10	Bath	10'0" x 10'2"	87 sq. ft	Yes
11	Bedroom	12'2" x 13'3"	143 sq. ft	Yes
12	Hall	10'11" x 3'2"	34 sq. ft	Yes
13	Laundry	7'4" x 3'2"	23 sq. ft	Yes
14	W.I.C.	8'10" x 8'2"	52 sq. ft	Yes
15	Bedroom	9'8" x 15'7"	122 sq. ft	Yes
16	Hall	13'0" x 4'0"	101 sq. ft	Yes

57 Hardy Road, Londonderry, Rockingham County, New Hampshire, United States, 03053

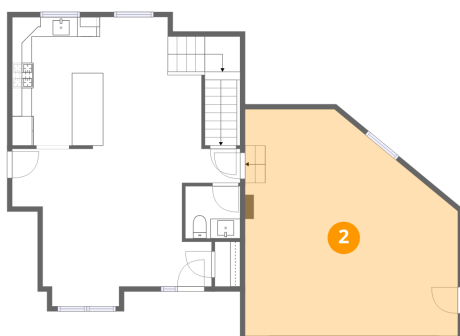
1 Floor 1 - Basement



Dimensions: 22'5" x 28'10"
Area: 594 sq. ft
Counted as living area: No

Heated: Yes
Finished: No
Enclosed: Yes
Contiguous: Yes
Permitted: Yes
Wet space: No
Addition: No
Conversion: No

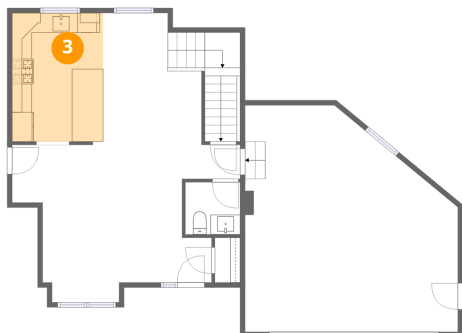
2 Floor 2 - Garage



Dimensions: 21'6" x 22'10"
Area: 428 sq. ft
Counted as living area: No

Heated: No
Finished: No
Enclosed: Yes
Contiguous: Yes
Permitted: Yes
Wet space: No
Addition: No
Conversion: No

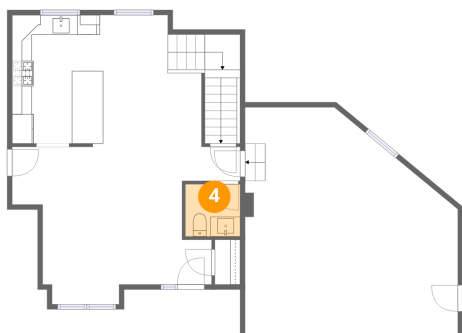
3 Floor 2 - Kitchen



Dimensions: 9'2" x 13'0"
Area: 119 sq. ft
Counted as living area: Yes

Heated: Yes
Finished: Yes
Enclosed: Yes
Contiguous: Yes
Permitted: Yes
Wet space: No
Addition: No
Conversion: No

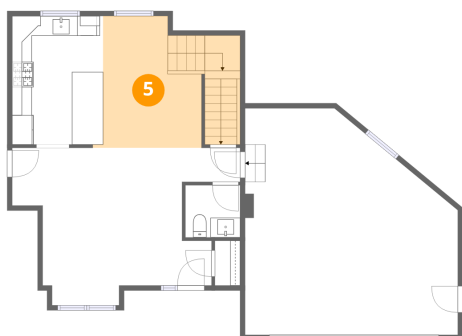
4 Floor 2 - Bath



Dimensions: 5'6" x 5'3"
Area: 29 sq. ft
Counted as living area: Yes

Heated: Yes
Finished: Yes
Enclosed: Yes
Contiguous: Yes
Permitted: Yes
Wet space: Yes
Addition: No
Conversion: No

5 Floor 2 - Dining Area

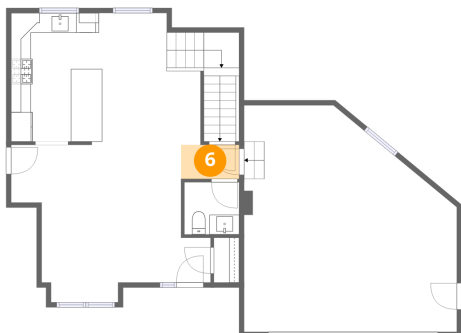


Dimensions: 13'10" x 13'3"
Area: 167 sq. ft
Counted as living area: Yes

Heated: Yes
Finished: Yes
Enclosed: Yes
Contiguous: Yes
Permitted: Yes
Wet space: No
Addition: No
Conversion: No

57 Hardy Road, Londonderry, Rockingham County, New Hampshire, United States, 03053

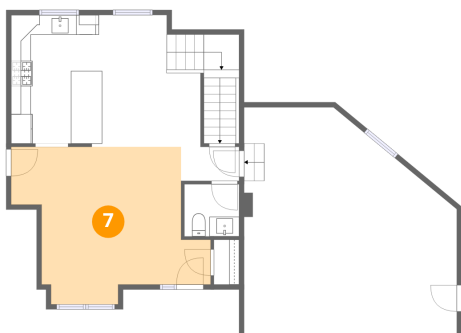
6 Floor 2 - Hall



Dimensions: 5'10" x 3'5"
Area: 20 sq. ft
Counted as living area: Yes

Heated: Yes
Finished: Yes
Enclosed: Yes
Contiguous: Yes
Permitted: Yes
Wet space: No
Addition: No
Conversion: No

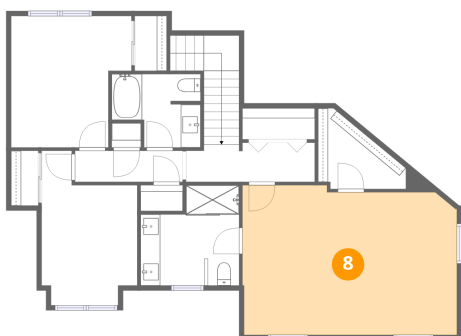
7 Floor 2 - Living Room



Dimensions: 17'2" x 15'11"
Area: 241 sq. ft
Counted as living area: Yes

Heated: Yes
Finished: Yes
Enclosed: Yes
Contiguous: Yes
Permitted: Yes
Wet space: No
Addition: No
Conversion: No

8 Floor 3 - Primary Bedroom



Dimensions: 21'8" x 15'1"
Area: 316 sq. ft
Counted as living area: Yes

Heated: Yes
Finished: Yes
Enclosed: Yes
Contiguous: Yes
Permitted: Yes
Wet space: No
Addition: No
Conversion: No

57 Hardy Road, Londonderry, Rockingham County, New Hampshire, United States, 03053

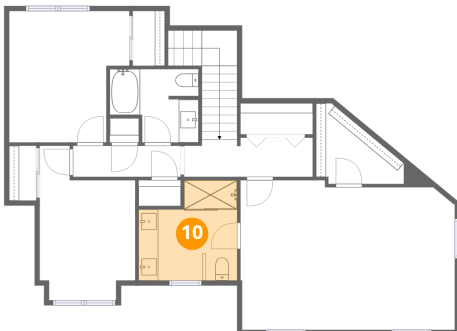
9 Floor 3 - Bath



Dimensions: 9'0" x 7'5"
Area: 56 sq. ft
Counted as living area: Yes

Heated: Yes
Finished: Yes
Enclosed: Yes
Contiguous: Yes
Permitted: Yes
Wet space: Yes
Addition: No
Conversion: No

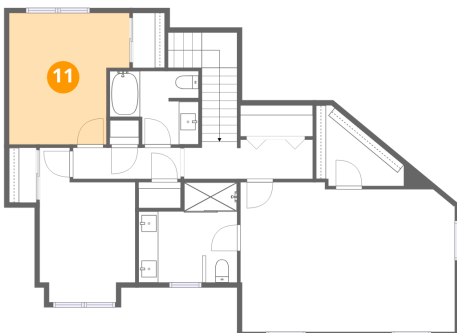
10 Floor 3 - Bath



Dimensions: 10'0" x 10'2"
Area: 87 sq. ft
Counted as living area: Yes

Heated: Yes
Finished: Yes
Enclosed: Yes
Contiguous: Yes
Permitted: Yes
Wet space: Yes
Addition: No
Conversion: No

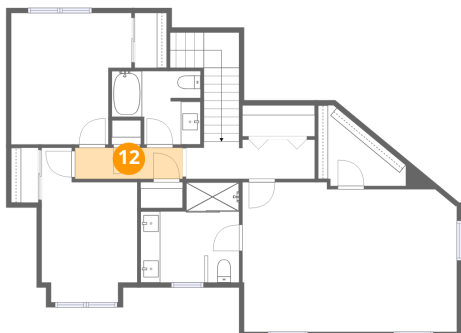
11 Floor 3 - Bedroom



Dimensions: 12'2" x 13'3"
Area: 143 sq. ft
Counted as living area: Yes

Heated: Yes
Finished: Yes
Enclosed: Yes
Contiguous: Yes
Permitted: Yes
Wet space: No
Addition: No
Conversion: No

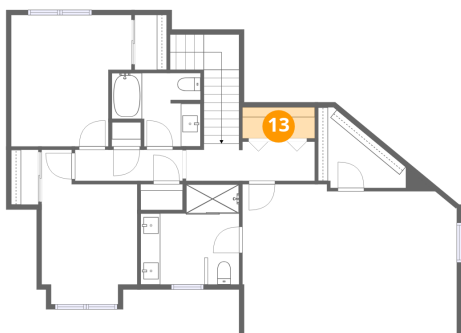
12 Floor 3 - Hall



Dimensions: 10'11" x 3'2"
Area: 34 sq. ft
Counted as living area: Yes

Heated: Yes
Finished: Yes
Enclosed: Yes
Contiguous: Yes
Permitted: Yes
Wet space: No
Addition: No
Conversion: No

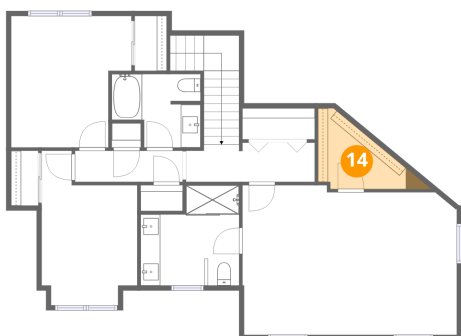
13 Floor 3 - Laundry



Dimensions: 7'4" x 3'2"
Area: 23 sq. ft
Counted as living area: Yes

Heated: Yes
Finished: Yes
Enclosed: Yes
Contiguous: Yes
Permitted: Yes
Wet space: No
Addition: No
Conversion: No

14 Floor 3 - W.I.C.

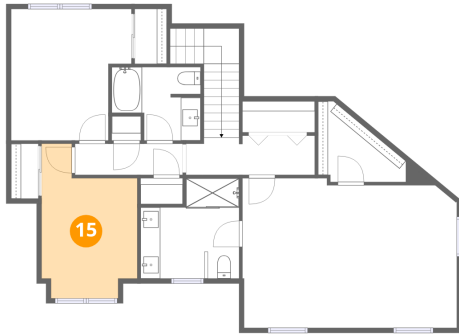


Dimensions: 8'10" x 8'2"
Area: 52 sq. ft
Counted as living area: Yes

Heated: Yes
Finished: Yes
Enclosed: Yes
Contiguous: Yes
Permitted: Yes
Wet space: No
Addition: No
Conversion: No

57 Hardy Road, Londonderry, Rockingham County, New Hampshire, United States, 03053

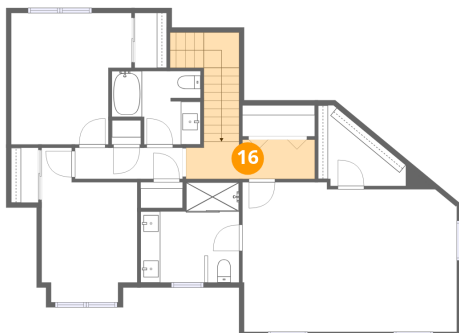
15 Floor 3 - Bedroom



Dimensions: 9'8" x 15'7"
Area: 122 sq. ft
Counted as living area: Yes

Heated: Yes
Finished: Yes
Enclosed: Yes
Contiguous: Yes
Permitted: Yes
Wet space: No
Addition: No
Conversion: No

16 Floor 3 - Hall



Dimensions: 13'0" x 4'0"
Area: 101 sq. ft
Counted as living area: Yes

Heated: Yes
Finished: Yes
Enclosed: Yes
Contiguous: Yes
Permitted: Yes
Wet space: No
Addition: No
Conversion: No