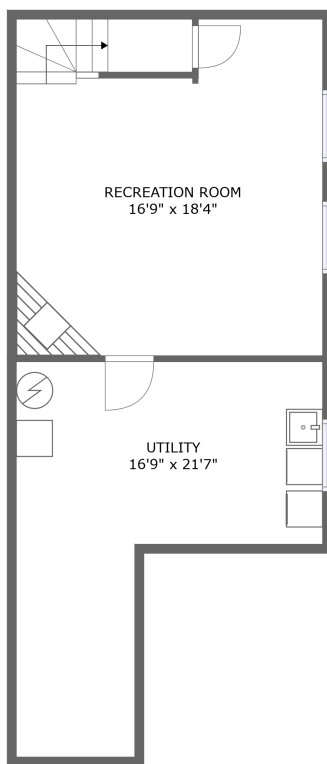
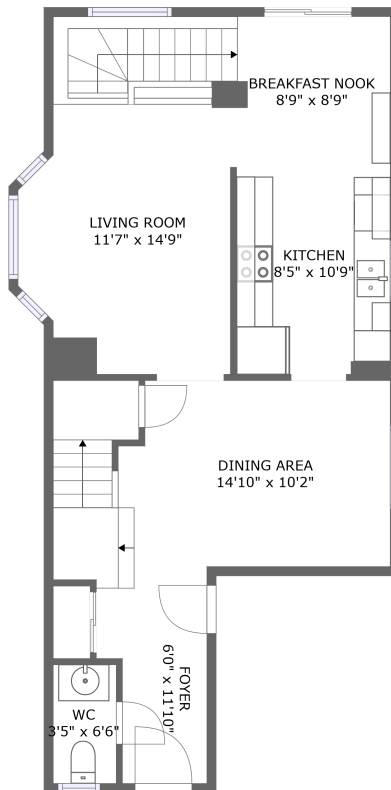


Home report

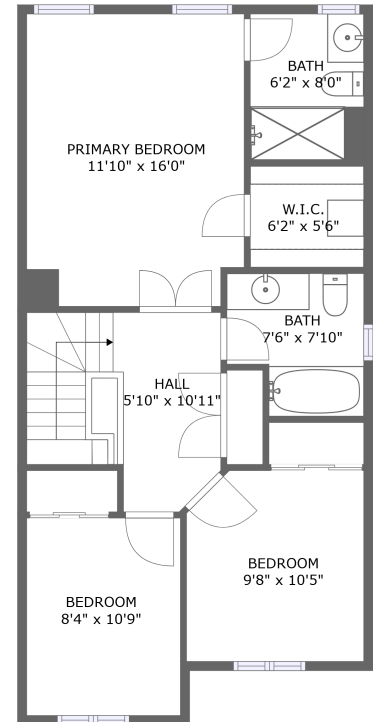
96 Springcreek Crescent, Bridlewood, Kanata, Ontario, Canada,
K2M 2K8



FLOOR 1



FLOOR 2



FLOOR 3

Total Area: 1655 sq. ft

Below Ground: 313 sq. ft, Floor 2: 666 sq. ft, Floor 3: 676 sq. ft

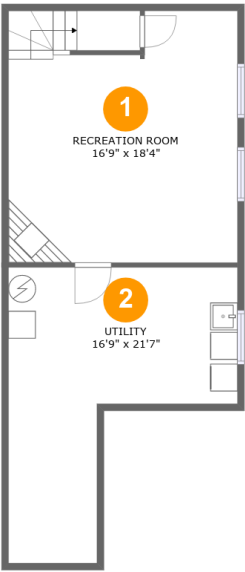
Excluded: Utility 242 sq. ft, Walls: 158 sq. ft

Property summary



Home report

96 Springcreek Crescent, Bridlewood, Kanata, Ontario, Canada,
K2M 2K8



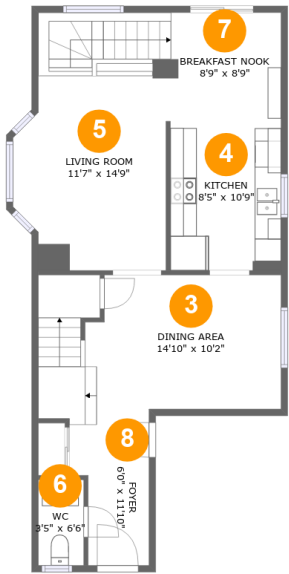
Room dimensions

Floor 1 Below ground Total:313sqft Excluded: 242sqft

#		Max Dimensions	sqft	Included
1	Recreation Room	16'9" x 18'4"	304 sq. ft	Yes
2	Utility	16'9" x 21'7"	242 sq. ft	No

Home report

96 Springcreek Crescent, Bridlewood, Kanata, Ontario, Canada,
K2M 2K8



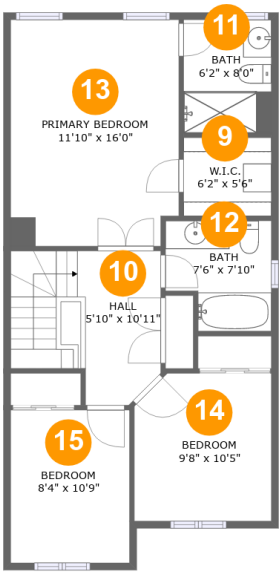
Room dimensions

Floor 2 Total:666sqft Excluded: 0sqft

#		Max Dimensions	sqft	Included
3	Dining Area	14'10" x 10'2"	185 sq. ft	Yes
4	Kitchen	8'5" x 10'9"	90 sq. ft	Yes
5	Living Room	11'7" x 14'9"	203 sq. ft	Yes
6	WC	3'5" x 6'6"	22 sq. ft	Yes
7	Breakfast Nook	8'9" x 8'9"	76 sq. ft	Yes
8	Foyer	6'0" x 11'10"	64 sq. ft	Yes

Home report

96 Springcreek Crescent, Bridlewood, Kanata, Ontario, Canada,
K2M 2K8



Room dimensions

Floor 3

Total:676sqft

Excluded: 0sqft

#		Max Dimensions	sqft	Included
9	W.I.C.	6'2" x 5'6"	34 sq. ft	Yes
10	Hall	5'10" x 10'11"	99 sq. ft	Yes
11	Bath	6'2" x 8'0"	49 sq. ft	Yes
12	Bath	7'6" x 7'10"	52 sq. ft	Yes
13	Primary Bedroom	11'10" x 16'0"	187 sq. ft	Yes
14	Bedroom	9'8" x 10'5"	98 sq. ft	Yes
15	Bedroom	8'4" x 10'9"	91 sq. ft	Yes

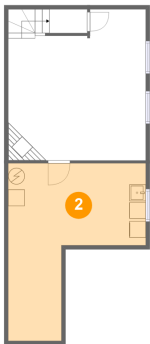
1 Floor 1 - Recreation Room



Max Dimensions: 16'9" x 18'4"
Calculated Area: 304 sq. ft
Included: Yes

Heated: Yes
Finished: Yes
Enclosed: Yes
Contiguous: Yes
Permitted: Yes
Wet space: No
Addition: No
Conversion: No

2 Floor 1 - Utility



Max Dimensions: 16'9" x 21'7"
Calculated Area: 242 sq. ft
Included: No

Heated: Yes
Finished: No
Enclosed: Yes
Contiguous: Yes
Permitted: Yes
Wet space: No
Addition: No
Conversion: No

3 Floor 2 - Dining Area



Max Dimensions: 14'10" x 10'2"
Calculated Area: 185 sq. ft
Included: Yes

Heated: Yes
Finished: Yes
Enclosed: Yes
Contiguous: Yes
Permitted: Yes
Wet space: No
Addition: No
Conversion: No

4 Floor 2 - Kitchen



Max Dimensions: 8'5" x 10'9"
Calculated Area: 90 sq. ft
Included: Yes

Heated: Yes
Finished: Yes
Enclosed: Yes
Contiguous: Yes
Permitted: Yes
Wet space: No
Addition: No
Conversion: No

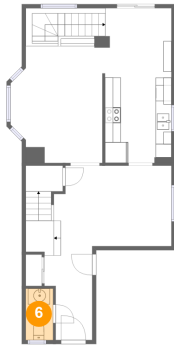
5 Floor 2 - Living Room



Max Dimensions: 11'7" x 14'9"
Calculated Area: 203 sq. ft
Included: Yes

Heated: Yes
Finished: Yes
Enclosed: Yes
Contiguous: Yes
Permitted: Yes
Wet space: No
Addition: No
Conversion: No

6 Floor 2 - WC



Max Dimensions: 3'5" x 6'6"
Calculated Area: 22 sq. ft
Included: Yes

Heated: Yes
Finished: Yes
Enclosed: Yes
Contiguous: Yes
Permitted: Yes
Wet space: Yes
Addition: No
Conversion: No

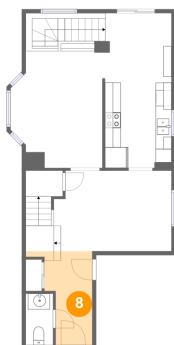
7 Floor 2 - Breakfast Nook



Max Dimensions: 8'9" x 8'9"
Calculated Area: 76 sq. ft
Included: Yes

Heated: Yes
Finished: Yes
Enclosed: Yes
Contiguous: Yes
Permitted: Yes
Wet space: No
Addition: No
Conversion: No

8 Floor 2 - Foyer



Max Dimensions: 6'0" x
11'10"
Calculated Area: 64 sq. ft
Included: Yes

Heated: Yes
Finished: Yes
Enclosed: Yes
Contiguous:
Yes
Permitted: Yes
Wet space: No
Addition: No
Conversion: No

96 Springcreek Crescent, Bridlewood, Kanata, Ontario, Canada,
K2M 2K8

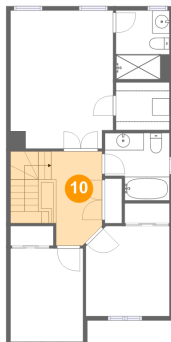
9 Floor 3 - W.I.C.



Max Dimensions: 6'2" x 5'6"
Calculated Area: 34 sq. ft
Included: Yes

Heated: Yes
Finished: Yes
Enclosed: Yes
Contiguous: Yes
Permitted: Yes
Wet space: No
Addition: No
Conversion: No

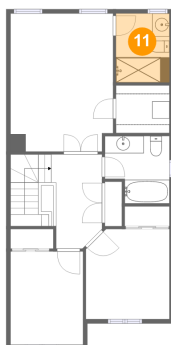
10 Floor 3 - Hall



Max Dimensions: 5'10" x 10'11"
Calculated Area: 99 sq. ft
Included: Yes

Heated: Yes
Finished: Yes
Enclosed: Yes
Contiguous: Yes
Permitted: Yes
Wet space: No
Addition: No
Conversion: No

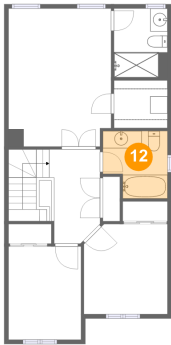
11 Floor 3 - Bath



Max Dimensions: 6'2" x 8'0"
Calculated Area: 49 sq. ft
Included: Yes

Heated: Yes
Finished: Yes
Enclosed: Yes
Contiguous: Yes
Permitted: Yes
Wet space: Yes
Addition: No
Conversion: No

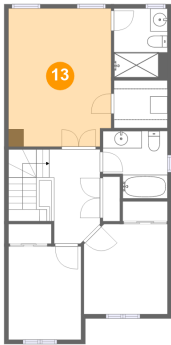
12 Floor 3 - Bath



Max Dimensions: 7'6" x 7'10"
Calculated Area: 52 sq. ft
Included: Yes

Heated: Yes
Finished: Yes
Enclosed: Yes
Contiguous: Yes
Permitted: Yes
Wet space: Yes
Addition: No
Conversion: No

13 Floor 3 - Primary Bedroom



Max Dimensions: 11'10" x 16'0"
Calculated Area: 187 sq. ft
Included: Yes

Heated: Yes
Finished: Yes
Enclosed: Yes
Contiguous: Yes
Permitted: Yes
Wet space: No
Addition: No
Conversion: No

14 Floor 3 - Bedroom

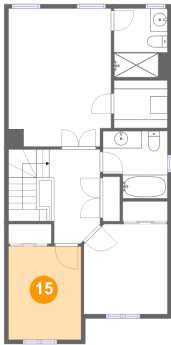


Max Dimensions: 9'8" x 10'5"
Calculated Area: 98 sq. ft
Included: Yes

Heated: Yes
Finished: Yes
Enclosed: Yes
Contiguous: Yes
Permitted: Yes
Wet space: No
Addition: No
Conversion: No

96 Springcreek Crescent, Bridlewood, Kanata, Ontario, Canada,
K2M 2K8

15 Floor 3 - Bedroom



Max Dimensions: 8'4" x 10'9"
Calculated Area: 91 sq. ft
Included: Yes

Heated: Yes
Finished: Yes
Enclosed: Yes
Contiguous: Yes
Permitted: Yes
Wet space: No
Addition: No
Conversion: No