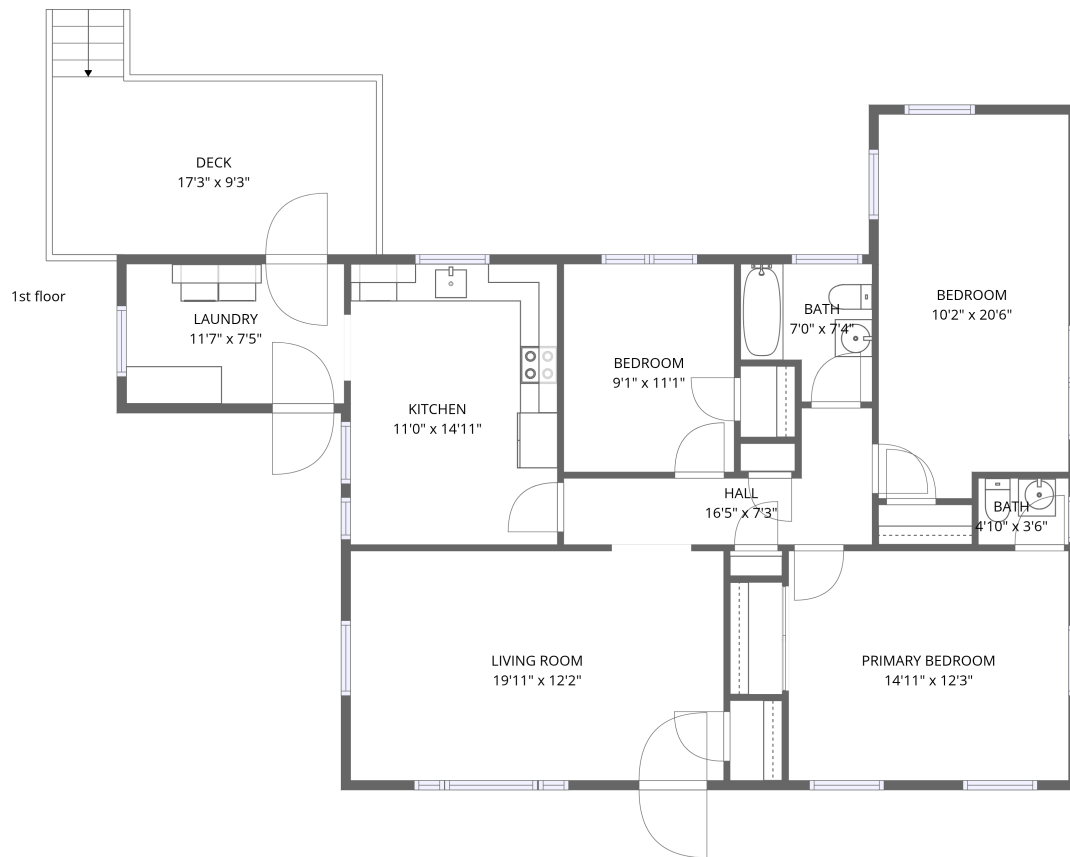


Home data report

2604 Danville Street, Hopewell, Hopewell city, Virginia, United States, 23860

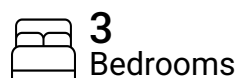


**Total Area: 1222 sq. ft**

1st Floor: 1222 sq. ft

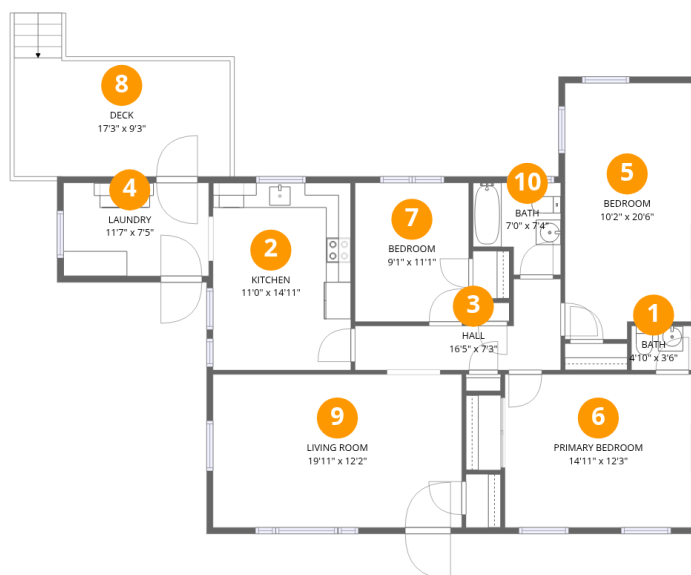
Excluded: Deck 174 sq. ft, Walls: 87 sq. ft

## Property summary



## Home data report

2604 Danville Street, Hopewell, Hopewell city, Virginia, United States, 23860



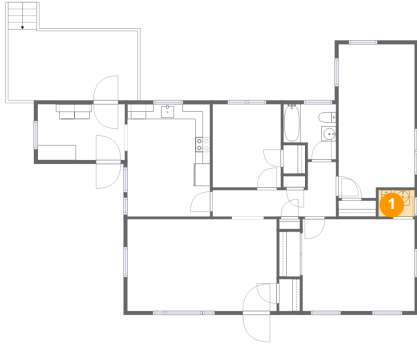
## Room dimensions

Floor 1

Total:1222sqft Excluded: 174sqft

#		Dimensions	sqft	Counted as living area
1	Bath	4'10" x 3'6"	17 sq. ft	Yes
2	Kitchen	11'0" x 14'11"	165 sq. ft	Yes
3	Hall	16'5" x 7'3"	120 sq. ft	Yes
4	Laundry	11'7" x 7'5"	86 sq. ft	Yes
5	Bedroom	10'2" x 20'6"	207 sq. ft	Yes
6	Primary Bedroom	14'11" x 12'3"	182 sq. ft	Yes
7	Bedroom	9'1" x 11'1"	101 sq. ft	Yes
8	Deck	17'3" x 9'3"	159 sq. ft	No
9	Living Room	19'11" x 12'2"	242 sq. ft	Yes
10	Bath	7'0" x 7'4"	51 sq. ft	Yes

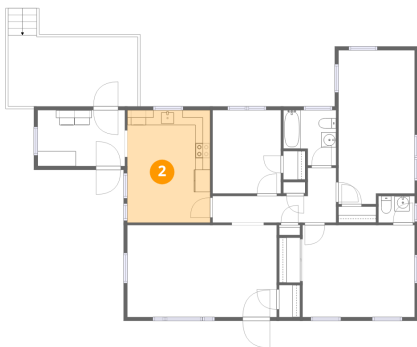
## 1 Floor 1 - Bath



Dimensions: 4'10" x 3'6"  
Area: 17 sq. ft  
Counted as living area: Yes

Heated: Yes  
Finished: Yes  
Enclosed: Yes  
Contiguous: Yes  
Permitted: Yes  
Wet space: Yes  
Addition: No  
Conversion: No

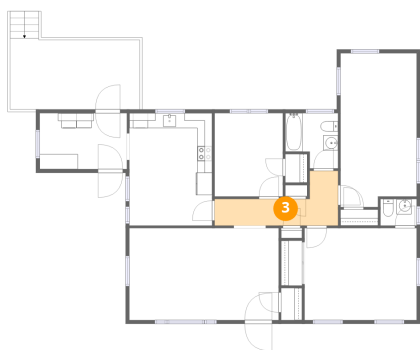
## 2 Floor 1 - Kitchen



Dimensions: 11'0" x 14'11"  
Area: 165 sq. ft  
Counted as living area: Yes

Heated: Yes  
Finished: Yes  
Enclosed: Yes  
Contiguous: Yes  
Permitted: Yes  
Wet space: No  
Addition: No  
Conversion: No

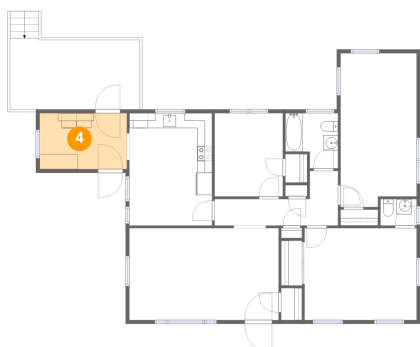
### 3 Floor 1 - Hall



Dimensions: 16'5" x 7'3"  
Area: 120 sq. ft  
Counted as living area: Yes

Heated: Yes  
Finished: Yes  
Enclosed: Yes  
Contiguous: Yes  
Permitted: Yes  
Wet space: No  
Addition: No  
Conversion: No

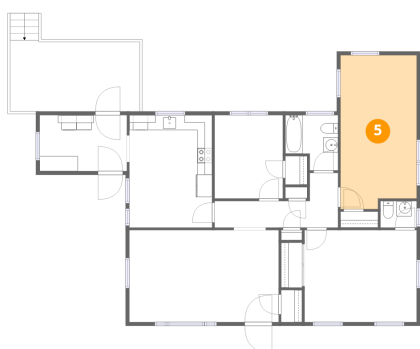
### 4 Floor 1 - Laundry



Dimensions: 11'7" x 7'5"  
Area: 86 sq. ft  
Counted as living area: Yes

Heated: Yes  
Finished: Yes  
Enclosed: Yes  
Contiguous: Yes  
Permitted: Yes  
Wet space: No  
Addition: No  
Conversion: No

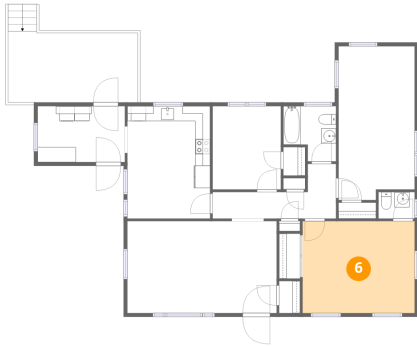
### 5 Floor 1 - Bedroom



Dimensions: 10'2" x 20'6"  
Area: 207 sq. ft  
Counted as living area: Yes

Heated: Yes  
Finished: Yes  
Enclosed: Yes  
Contiguous: Yes  
Permitted: Yes  
Wet space: No  
Addition: No  
Conversion: No

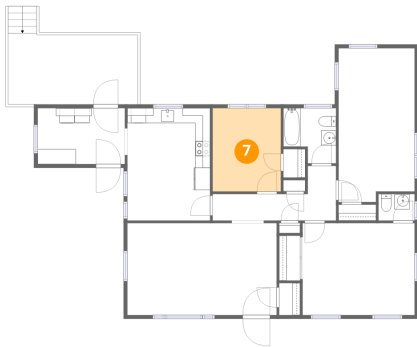
### 6 Floor 1 - Primary Bedroom



Dimensions: 14'11" x 12'3"  
Area: 182 sq. ft  
Counted as living area: Yes

Heated: Yes  
Finished: Yes  
Enclosed: Yes  
Contiguous: Yes  
Permitted: Yes  
Wet space: No  
Addition: No  
Conversion: No

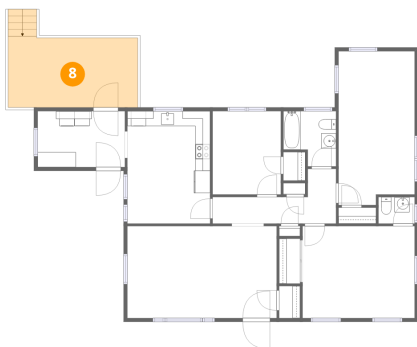
### 7 Floor 1 - Bedroom



Dimensions: 9'1" x 11'1"  
Area: 101 sq. ft  
Counted as living area: Yes

Heated: Yes  
Finished: Yes  
Enclosed: Yes  
Contiguous: Yes  
Permitted: Yes  
Wet space: No  
Addition: No  
Conversion: No

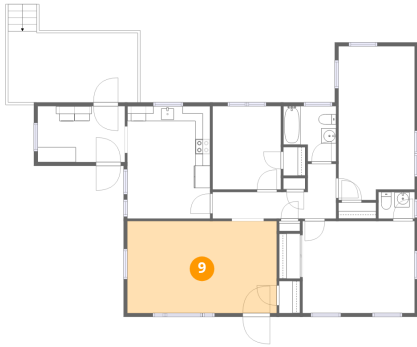
### 8 Floor 1 - Deck



Dimensions: 17'3" x 9'3"  
Area: 159 sq. ft  
Counted as living area: No

Heated: No  
Finished: No  
Enclosed: No  
Contiguous: Yes  
Permitted: Yes  
Wet space: No  
Addition: No  
Conversion: No

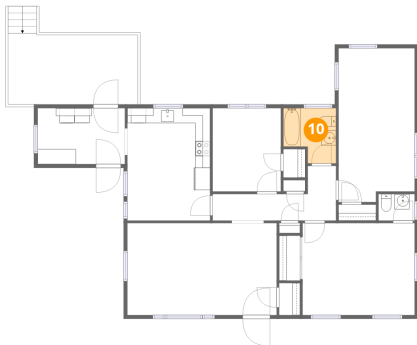
**9** Floor 1 - Living Room



Dimensions: 19'11" x 12'2"  
Area: 242 sq. ft  
Counted as living area: Yes

Heated: Yes  
Finished: Yes  
Enclosed: Yes  
Contiguous: Yes  
Permitted: Yes  
Wet space: No  
Addition: No  
Conversion: No

**10** Floor 1 - Bath



Dimensions: 7'0" x 7'4"  
Area: 51 sq. ft  
Counted as living area: Yes

Heated: Yes  
Finished: Yes  
Enclosed: Yes  
Contiguous: Yes  
Permitted: Yes  
Wet space: Yes  
Addition: No  
Conversion: No