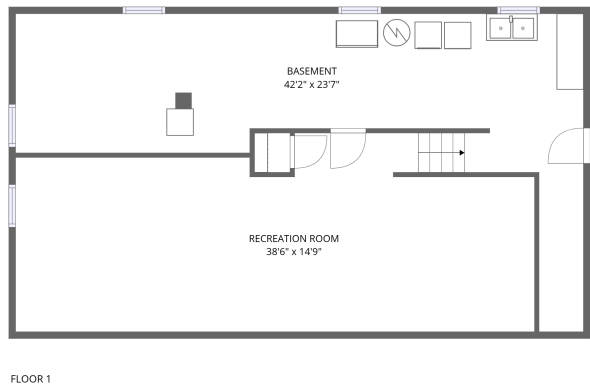
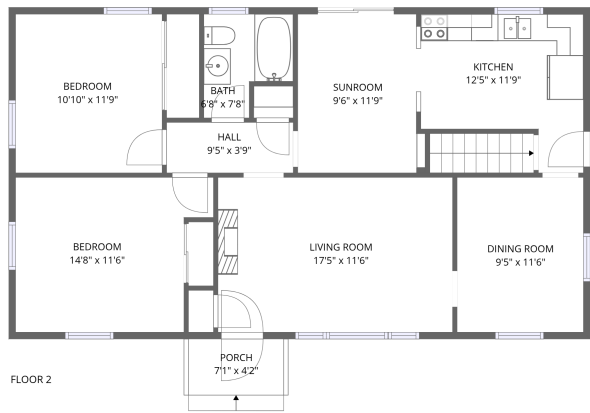


Home report

3437 Richards Boulevard, Yostland Heights, Cave Spring,
Roanoke, Roanoke County, Virginia, United States, 24018




Total Area: 1534 sq. ft

Below Ground: 538 sq. ft, Floor 2: 996 sq. ft

Excluded: Basement 458 sq. ft, Porch 29 sq. ft, Walls: 134 sq. ft

Property summary

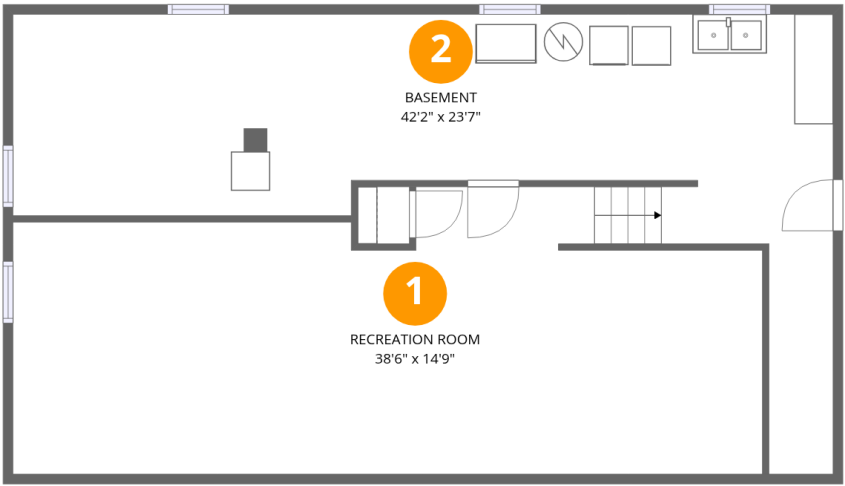
 2 Floors

 2 Bedrooms

 1 Bathrooms

Home report

3437 Richards Boulevard, Yostland Heights, Cave Spring,
Roanoke, Roanoke County, Virginia, United States, 24018



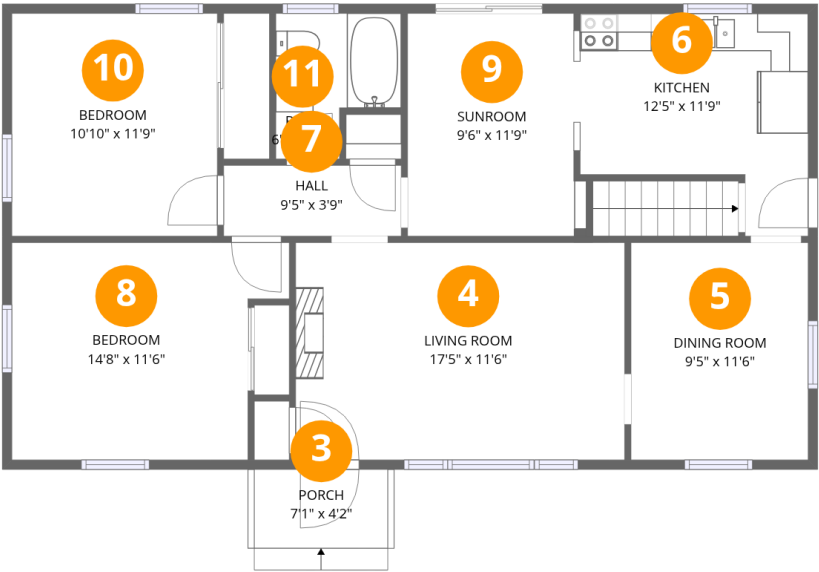
Room dimensions

Floor 1 Below ground Total:538sqft Excluded: 458sqft

#		Max Dimensions	sqft	Included
1	Recreation Room	38'6" x 14'9"	508 sq. ft	Yes
2	Basement	42'2" x 23'7"	458 sq. ft	No

Home report

3437 Richards Boulevard, Yostland Heights, Cave Spring,
Roanoke, Roanoke County, Virginia, United States, 24018



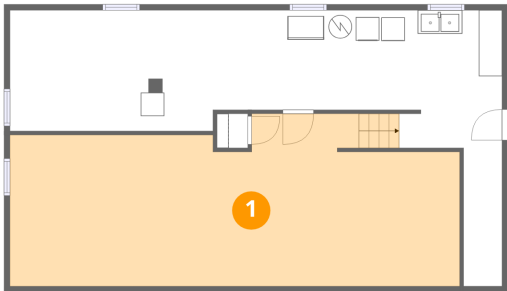
Room dimensions

Floor 2 Total:996sqft Excluded: 29sqft

#		Max Dimensions	sqft	Included
3	Porch	7'1" x 4'2"	29 sq. ft	No
4	Living Room	17'5" x 11'6"	200 sq. ft	Yes
5	Dining Room	9'5" x 11'6"	108 sq. ft	Yes
6	Kitchen	12'5" x 11'9"	116 sq. ft	Yes
7	Hall	9'5" x 3'9"	35 sq. ft	Yes
8	Bedroom	14'8" x 11'6"	150 sq. ft	Yes
9	Sunroom	9'6" x 11'9"	106 sq. ft	Yes
10	Bedroom	10'10" x 11'9"	128 sq. ft	Yes
11	Bath	6'8" x 7'8"	42 sq. ft	Yes

3437 Richards Boulevard, Yostland Heights, Cave Spring,
Roanoke, Roanoke County, Virginia, United States, 24018

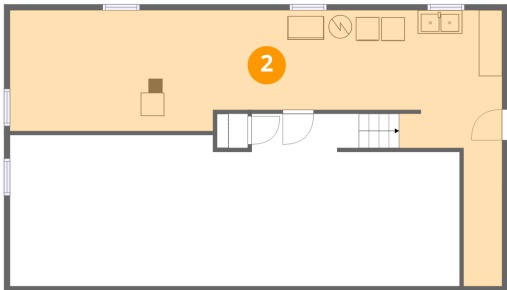
1 Floor 1 - Recreation Room



Max Dimensions: 38'6" x 14'9"
Calculated Area: 508 sq. ft
Included: No

Heated: Yes
Finished: Yes
Enclosed: Yes
Contiguous: No
Permitted: Yes
Wet space: No
Addition: No
Conversion: No

2 Floor 1 - Basement

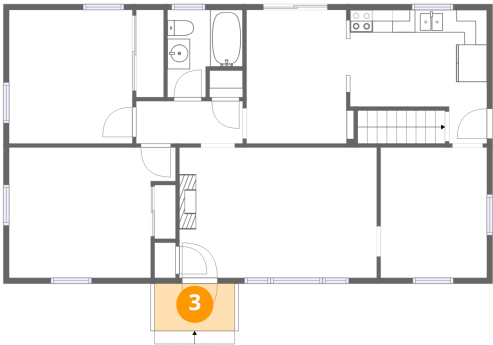


Max Dimensions: 42'2" x 23'7"
Calculated Area: 458 sq. ft
Included: No

Heated: Yes
Finished: No
Enclosed: Yes
Contiguous: Yes
Permitted: Yes
Wet space: No
Addition: No
Conversion: No

3437 Richards Boulevard, Yostland Heights, Cave Spring,
Roanoke, Roanoke County, Virginia, United States, 24018

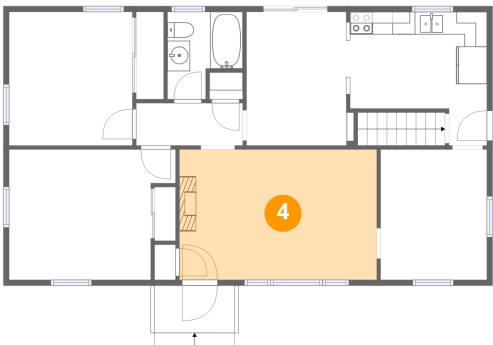
3 Floor 2 - Porch



Max Dimensions: 7'1" x 4'2"
Calculated Area: 29 sq. ft
Included: No

Heated: No
Finished: Yes
Enclosed: No
Contiguous: Yes
Permitted: Yes
Wet space: No
Addition: No
Conversion: No

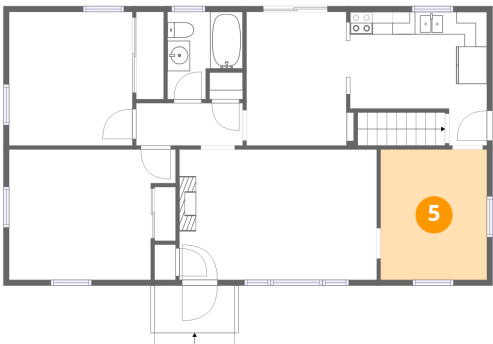
4 Floor 2 - Living Room



Max Dimensions: 17'5" x 11'6"
Calculated Area: 200 sq. ft
Included: Yes

Heated: Yes
Finished: Yes
Enclosed: Yes
Contiguous: Yes
Permitted: Yes
Wet space: No
Addition: No
Conversion: No

5 Floor 2 - Dining Room

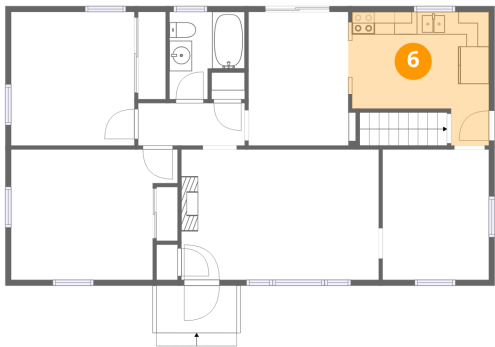


Max Dimensions: 9'5" x 11'6"
Calculated Area: 108 sq. ft
Included: Yes

Heated: Yes
Finished: Yes
Enclosed: Yes
Contiguous: Yes
Permitted: Yes
Wet space: No
Addition: No
Conversion: No

3437 Richards Boulevard, Yostland Heights, Cave Spring,
Roanoke, Roanoke County, Virginia, United States, 24018

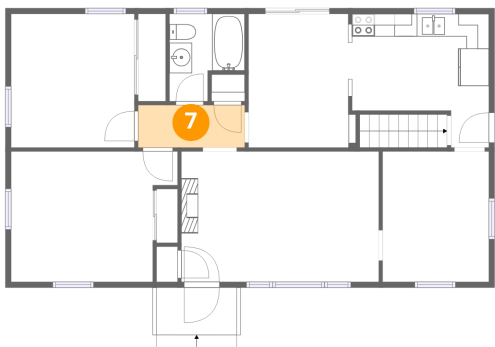
6 Floor 2 - Kitchen



Max Dimensions: 12'5" x 11'9"
Calculated Area: 116 sq. ft
Included: Yes

Heated: Yes
Finished: Yes
Enclosed: Yes
Contiguous: Yes
Permitted: Yes
Wet space: No
Addition: No
Conversion: No

7 Floor 2 - Hall



Max Dimensions: 9'5" x 3'9"
Calculated Area: 35 sq. ft
Included: Yes

Heated: Yes
Finished: Yes
Enclosed: Yes
Contiguous: Yes
Permitted: Yes
Wet space: No
Addition: No
Conversion: No

8 Floor 2 - Bedroom



Max Dimensions: 14'8" x 11'6"
Calculated Area: 150 sq. ft
Included: Yes

Heated: Yes
Finished: Yes
Enclosed: Yes
Contiguous: Yes
Permitted: Yes
Wet space: No
Addition: No
Conversion: No

3437 Richards Boulevard, Yostland Heights, Cave Spring,
Roanoke, Roanoke County, Virginia, United States, 24018

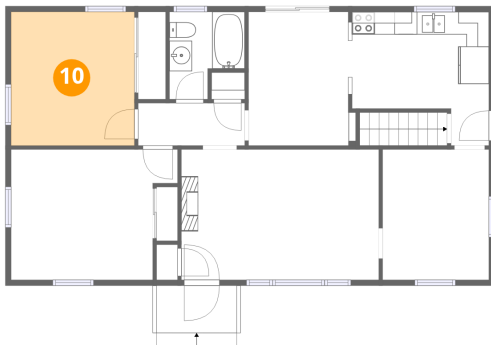
9 Floor 2 - Sunroom



Max Dimensions: 9'6" x 11'9"
Calculated Area: 106 sq. ft
Included: Yes

Heated: Yes
Finished: Yes
Enclosed: Yes
Contiguous: Yes
Permitted: Yes
Wet space: No
Addition: No
Conversion: No

10 Floor 2 - Bedroom



Max Dimensions: 10'10" x 11'9"
Calculated Area: 128 sq. ft
Included: Yes

Heated: Yes
Finished: Yes
Enclosed: Yes
Contiguous: Yes
Permitted: Yes
Wet space: No
Addition: No
Conversion: No

11 Floor 2 - Bath



Max Dimensions: 6'8" x 7'8"
Calculated Area: 42 sq. ft
Included: Yes

Heated: Yes
Finished: Yes
Enclosed: Yes
Contiguous: Yes
Permitted: Yes
Wet space: Yes
Addition: No
Conversion: No