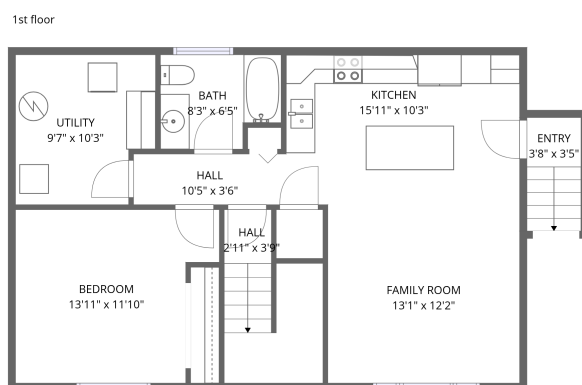
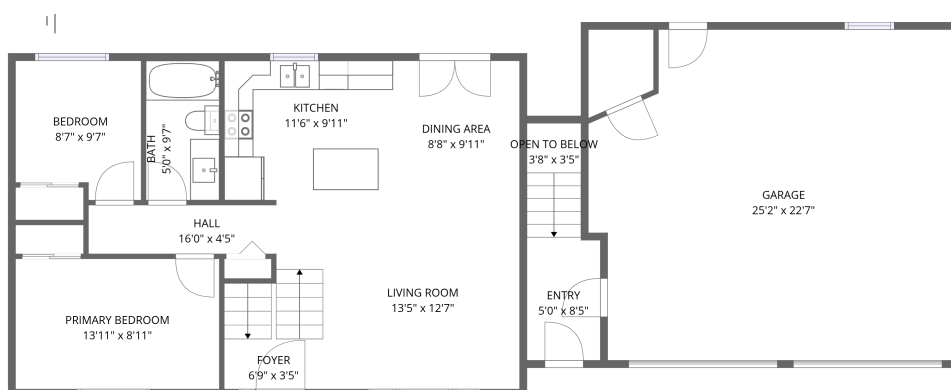


Home data report

1644 Drummond Concession 7, Perth, Lanark County, Ontario, Canada, K7H 3C8



Total Area: 1557 sq. ft

Basement 1: 716 sq. ft, 1st Floor: 841 sq. ft

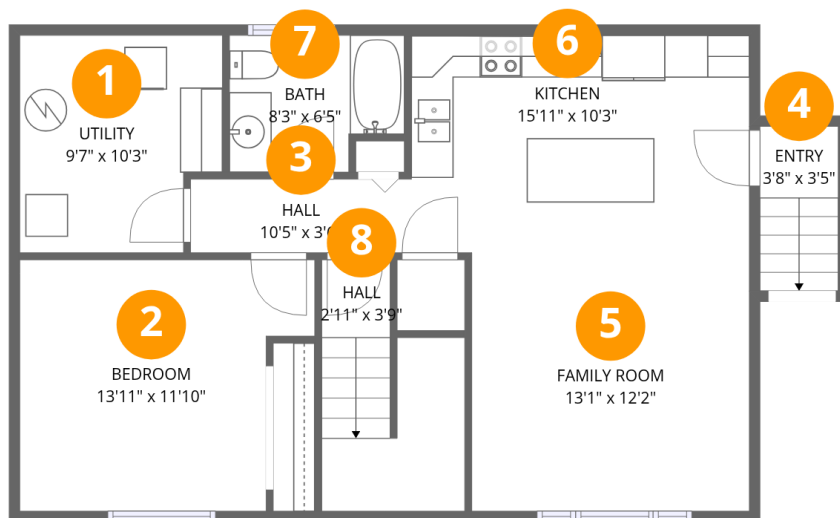
Excluded: Utility 91 sq. ft, Garage 533 sq. ft, Undefined 23 sq. ft, Open to below 13 sq. ft,

Walls: 166 sq. ft

Property summary



1644 Drummond Concession 7, Perth, Lanark County, Ontario, Canada, K7H 3C8



Room dimensions

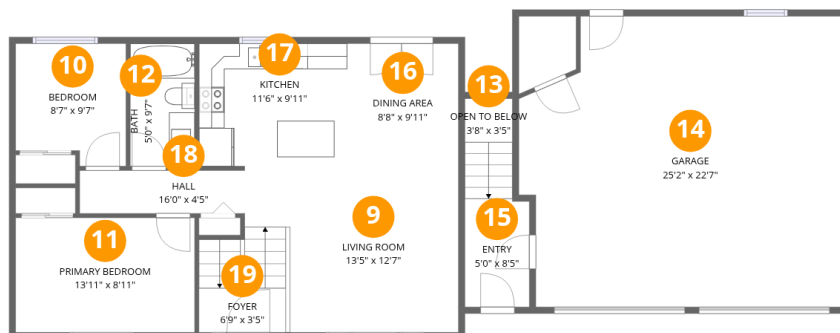
Floor 1 Below grade

Total:716sqft Excluded: 91sqft

#		Dimensions	sqft	Counted as living area
1	Utility	9'7" x 10'3"	98 sq. ft	No
2	Bedroom	13'11" x 11'10"	165 sq. ft	Yes
3	Hall	10'5" x 3'6"	36 sq. ft	Yes
4	Entry	3'8" x 3'5"	12 sq. ft	Yes
5	Family Room	13'1" x 12'2"	160 sq. ft	Yes
6	Kitchen	15'11" x 10'3"	164 sq. ft	Yes
7	Bath	8'3" x 6'5"	53 sq. ft	Yes
8	Hall	2'11" x 3'9"	11 sq. ft	Yes

Home data report

1644 Drummond Concession 7, Perth, Lanark County, Ontario, Canada, K7H 3C8



Room dimensions

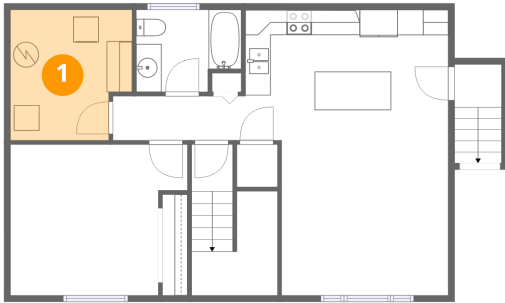
Floor 2

Total:841sqft Excluded: 569sqft

#		Dimensions	sqft	Counted as living area
9	Living Room	13'5" x 12'7"	169 sq. ft	Yes
10	Bedroom	8'7" x 9'7"	82 sq. ft	Yes
11	Primary Bedroom	13'11" x 8'11"	124 sq. ft	Yes
12	Bath	5'0" x 9'7"	48 sq. ft	Yes
13	Open To Below	3'8" x 3'5"	13 sq. ft	No
14	Garage	25'2" x 22'7"	569 sq. ft	No
15	Entry	5'0" x 8'5"	42 sq. ft	Yes
16	Dining Area	8'8" x 9'11"	86 sq. ft	Yes
17	Kitchen	11'6" x 9'11"	114 sq. ft	Yes
18	Hall	16'0" x 4'5"	71 sq. ft	Yes
19	Foyer	6'9" x 3'5"	23 sq. ft	Yes

1644 Drummond Concession 7, Perth, Lanark County, Ontario,
Canada, K7H 3C8

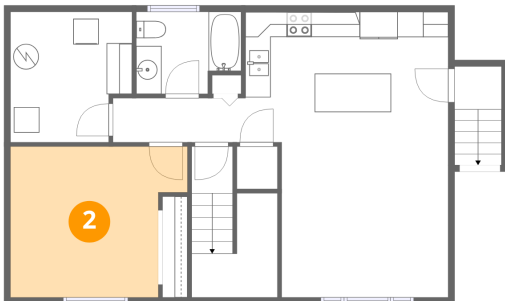
1 Floor 1 - Utility



Dimensions: 9'7" x 10'3"
Area: 98 sq. ft
Counted as living area: No

Heated: Yes
Finished: No
Enclosed: Yes
Contiguous: Yes
Permitted: Yes
Wet space: No
Addition: No
Conversion: No

2 Floor 1 - Bedroom

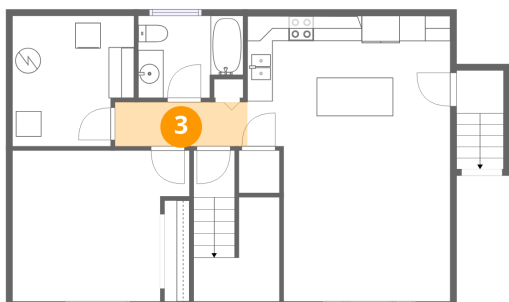


Dimensions: 13'11" x 11'10"
Area: 165 sq. ft
Counted as living area: Yes

Heated: Yes
Finished: Yes
Enclosed: Yes
Contiguous: Yes
Permitted: Yes
Wet space: No
Addition: No
Conversion: No

1644 Drummond Concession 7, Perth, Lanark County, Ontario, Canada, K7H 3C8

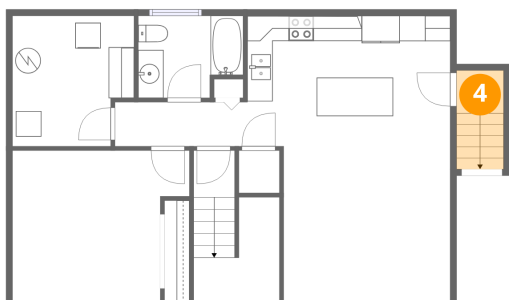
3 Floor 1 - Hall



Dimensions: 10'5" x 3'6"
Area: 36 sq. ft
Counted as living area: Yes

Heated: Yes
Finished: Yes
Enclosed: Yes
Contiguous: Yes
Permitted: Yes
Wet space: No
Addition: No
Conversion: No

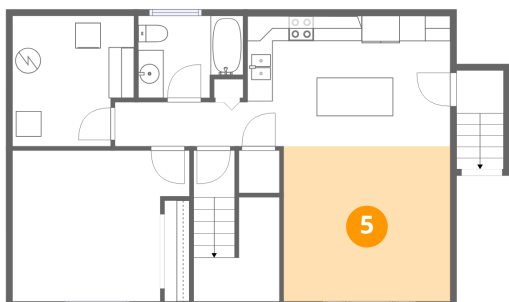
4 Floor 1 - Entry



Dimensions: 3'8" x 3'5"
Area: 12 sq. ft
Counted as living area: Yes

Heated: Yes
Finished: Yes
Enclosed: Yes
Contiguous: Yes
Permitted: Yes
Wet space: No
Addition: No
Conversion: No

5 Floor 1 - Family Room

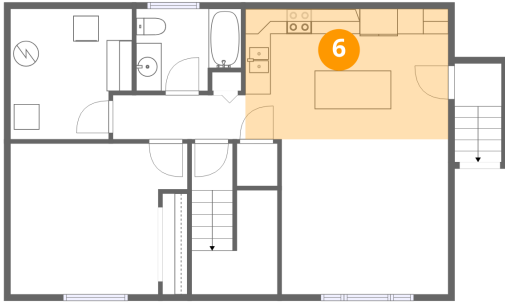


Dimensions: 13'1" x 12'2"
Area: 160 sq. ft
Counted as living area: Yes

Heated: Yes
Finished: Yes
Enclosed: Yes
Contiguous: Yes
Permitted: Yes
Wet space: No
Addition: No
Conversion: No

1644 Drummond Concession 7, Perth, Lanark County, Ontario, Canada, K7H 3C8

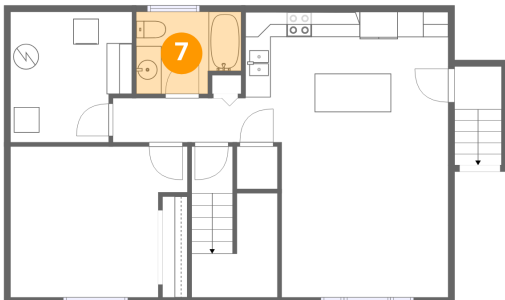
6 Floor 1 - Kitchen



Dimensions: 15'11" x 10'3"
Area: 164 sq. ft
Counted as living area: Yes

Heated: Yes
Finished: Yes
Enclosed: Yes
Contiguous: Yes
Permitted: Yes
Wet space: No
Addition: No
Conversion: No

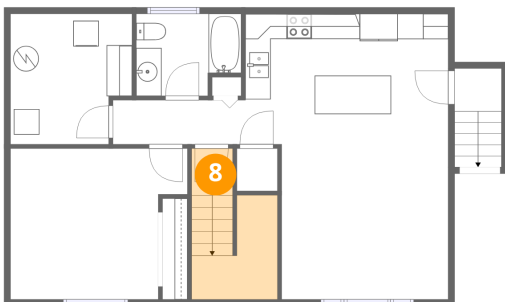
7 Floor 1 - Bath



Dimensions: 8'3" x 6'5"
Area: 53 sq. ft
Counted as living area: Yes

Heated: Yes
Finished: Yes
Enclosed: Yes
Contiguous: Yes
Permitted: Yes
Wet space: Yes
Addition: No
Conversion: No

8 Floor 1 - Hall



Dimensions: 2'11" x 3'9"
Area: 11 sq. ft
Counted as living area: Yes

Heated: Yes
Finished: Yes
Enclosed: Yes
Contiguous: Yes
Permitted: Yes
Wet space: No
Addition: No
Conversion: No

1644 Drummond Concession 7, Perth, Lanark County, Ontario, Canada, K7H 3C8

9 Floor 2 - Living Room



Dimensions: 13'5" x 12'7"
Area: 169 sq. ft
Counted as living area: Yes

Heated: Yes
Finished: Yes
Enclosed: Yes
Contiguous: Yes
Permitted: Yes
Wet space: No
Addition: No
Conversion: No

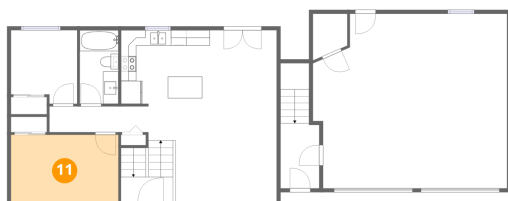
10 Floor 2 - Bedroom



Dimensions: 8'7" x 9'7"
Area: 82 sq. ft
Counted as living area: Yes

Heated: Yes
Finished: Yes
Enclosed: Yes
Contiguous: Yes
Permitted: Yes
Wet space: No
Addition: No
Conversion: No

11 Floor 2 - Primary Bedroom

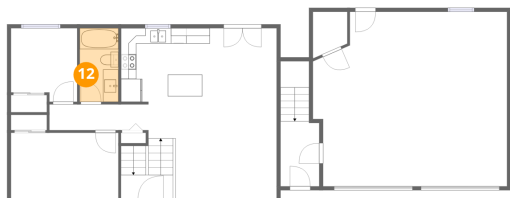


Dimensions: 13'11" x 8'11"
Area: 124 sq. ft
Counted as living area: Yes

Heated: Yes
Finished: Yes
Enclosed: Yes
Contiguous: Yes
Permitted: Yes
Wet space: No
Addition: No
Conversion: No

1644 Drummond Concession 7, Perth, Lanark County, Ontario, Canada, K7H 3C8

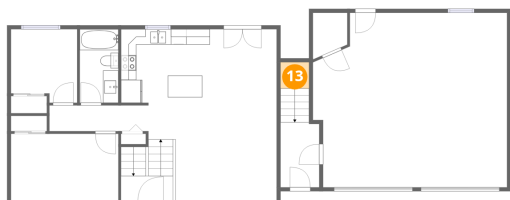
12 Floor 2 - Bath



Dimensions: 5'0" x 9'7"
Area: 48 sq. ft
Counted as living area: Yes

Heated: Yes
Finished: Yes
Enclosed: Yes
Contiguous: Yes
Permitted: Yes
Wet space: Yes
Addition: No
Conversion: No

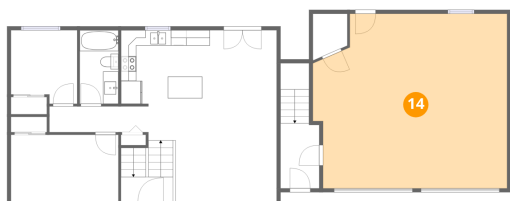
13 Floor 2 - Open To Below



Dimensions: 3'8" x 3'5"
Area: 13 sq. ft
Counted as living area: No

Heated: No
Finished: No
Enclosed: No
Contiguous: Yes
Permitted: No
Wet space: No
Addition: No
Conversion: No

14 Floor 2 - Garage

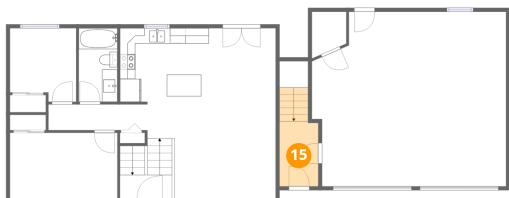


Dimensions: 25'2" x 22'7"
Area: 569 sq. ft
Counted as living area: No

Heated: No
Finished: No
Enclosed: Yes
Contiguous: Yes
Permitted: Yes
Wet space: No
Addition: No
Conversion: No

1644 Drummond Concession 7, Perth, Lanark County, Ontario, Canada, K7H 3C8

15 Floor 2 - Entry



Dimensions: 5'0" x 8'5"
Area: 42 sq. ft
Counted as living area: Yes

Heated: Yes
Finished: Yes
Enclosed: Yes
Contiguous: Yes
Permitted: Yes
Wet space: No
Addition: No
Conversion: No

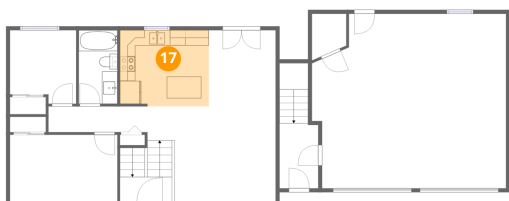
16 Floor 2 - Dining Area



Dimensions: 8'8" x 9'11"
Area: 86 sq. ft
Counted as living area: Yes

Heated: Yes
Finished: Yes
Enclosed: Yes
Contiguous: Yes
Permitted: Yes
Wet space: No
Addition: No
Conversion: No

17 Floor 2 - Kitchen

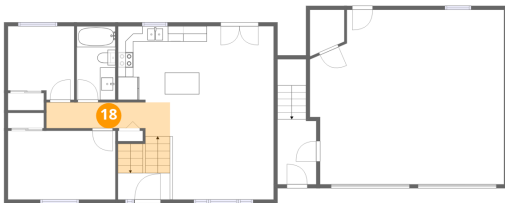


Dimensions: 11'6" x 9'11"
Area: 114 sq. ft
Counted as living area: Yes

Heated: Yes
Finished: Yes
Enclosed: Yes
Contiguous: Yes
Permitted: Yes
Wet space: No
Addition: No
Conversion: No

1644 Drummond Concession 7, Perth, Lanark County, Ontario, Canada, K7H 3C8

18 Floor 2 - Hall



Dimensions: 16'0" x 4'5"
Area: 71 sq. ft
Counted as living area: Yes

Heated: Yes
Finished: Yes
Enclosed: Yes
Contiguous: Yes
Permitted: Yes
Wet space: No
Addition: No
Conversion: No

19 Floor 2 - Foyer



Dimensions: 6'9" x 3'5"
Area: 23 sq. ft
Counted as living area: Yes

Heated: Yes
Finished: Yes
Enclosed: Yes
Contiguous: Yes
Permitted: Yes
Wet space: No
Addition: No
Conversion: No