

Home data report

110 Club House Drive, North Shore, Moneta, Franklin County,
Virginia, United States, 24121

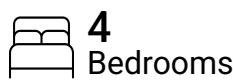


Total Area: 2721 sq. ft

1st Floor: 1034 sq. ft, 2nd Floor: 1687 sq. ft

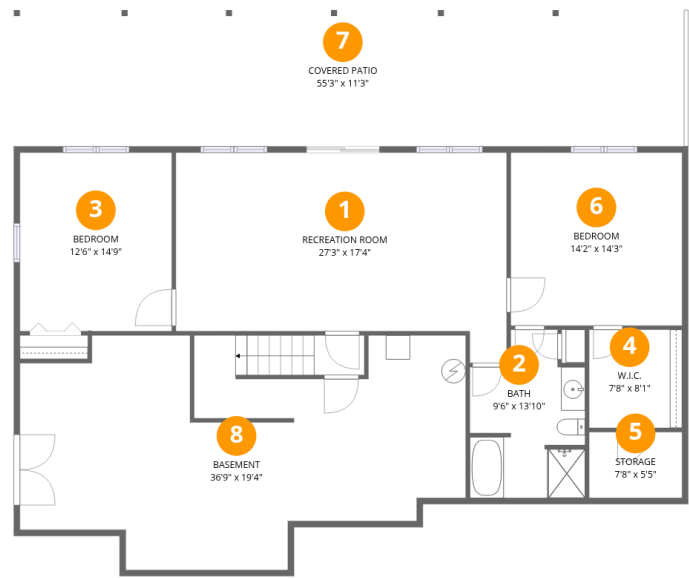
Excluded: Basement 602 sq. ft, Storage 42 sq. ft, Covered patio 621 sq. ft, Garage 517 sq. ft, Screened porch 229 sq. ft, Porch 41 sq. ft, Deck 423 sq. ft, Embedded window 6 sq. ft, Walls: 237 sq. ft

Property summary



Home data report

110 Club House Drive, North Shore, Moneta, Franklin County,
Virginia, United States, 24121



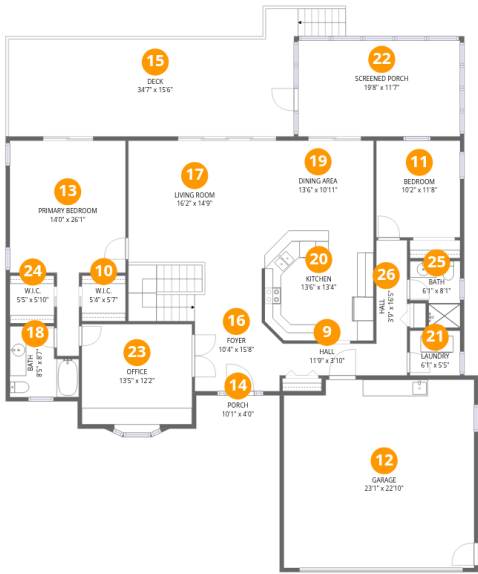
Room dimensions

Floor 1 Total:1034sqft Excluded: 1265sqft

#		Dimensions	sqft	Counted as living area
1	Recreation Room	27'3" x 17'4"	410 sq. ft	Yes
2	Bath	9'6" x 13'10"	112 sq. ft	Yes
3	Bedroom	12'6" x 14'9"	184 sq. ft	Yes
4	W.I.C.	7'8" x 8'1"	62 sq. ft	Yes
5	Storage	7'8" x 5'5"	42 sq. ft	No
6	Bedroom	14'2" x 14'3"	202 sq. ft	Yes
7	Covered Patio	55'3" x 11'3"	621 sq. ft	No
8	Basement	36'9" x 19'4"	592 sq. ft	No

Home data report

110 Club House Drive, North Shore, Moneta, Franklin County,
Virginia, United States, 24121



Room dimensions

Floor 2 Total:1687sqft Excluded: 1216sqft

#		Dimensions	sqft	Counted as living area
9	Hall	11'9" x 3'10"	45 sq. ft	Yes
10	W.I.C.	5'4" x 5'7"	30 sq. ft	Yes
11	Bedroom	10'2" x 11'8"	119 sq. ft	Yes
12	Garage	23'1" x 22'10"	517 sq. ft	No
13	Primary Bedroom	14'0" x 26'1"	252 sq. ft	Yes
14	Porch	10'1" x 4'0"	41 sq. ft	No
15	Deck	34'7" x 15'6"	423 sq. ft	No
16	Foyer	10'4" x 15'8"	201 sq. ft	Yes
17	Living Room	16'2" x 14'9"	239 sq. ft	Yes
18	Bath	8'5" x 8'7"	60 sq. ft	Yes
19	Dining Area	13'6" x 10'11"	148 sq. ft	Yes

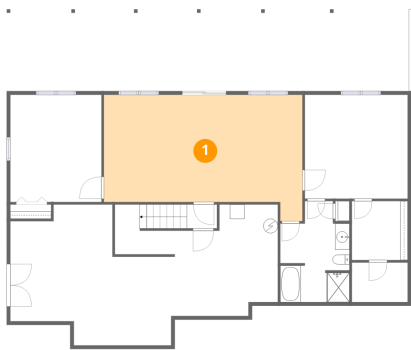
Home data report

**110 Club House Drive, North Shore, Moneta, Franklin County,
Virginia, United States, 24121**

#		Dimensions	sqft	Counted as living area
20	Kitchen	13'6" x 13'4"	175 sq. ft	Yes
21	Laundry	6'1" x 5'5"	33 sq. ft	Yes
22	Screened Porch	19'8" x 11'7"	229 sq. ft	No
23	Office	13'5" x 12'2"	163 sq. ft	Yes
24	W.I.C.	5'5" x 5'10"	31 sq. ft	Yes
25	Bath	6'1" x 8'1"	42 sq. ft	Yes
26	Hall	3'9" x 16'5"	61 sq. ft	Yes

110 Club House Drive, North Shore, Moneta, Franklin County,
Virginia, United States, 24121

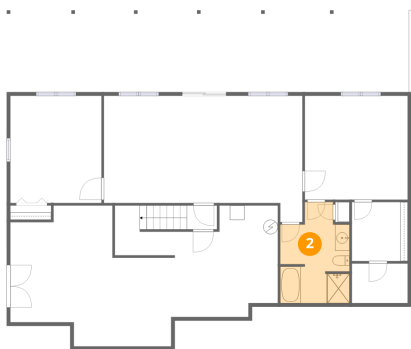
1 Floor 1 - Recreation Room



Dimensions: 27'3" x 17'4"
Area: 410 sq. ft
Counted as living area: Yes

Heated: Yes
Finished: Yes
Enclosed: Yes
Contiguous: Yes
Permitted: Yes
Wet space: No
Addition: No
Conversion: No

2 Floor 1 - Bath

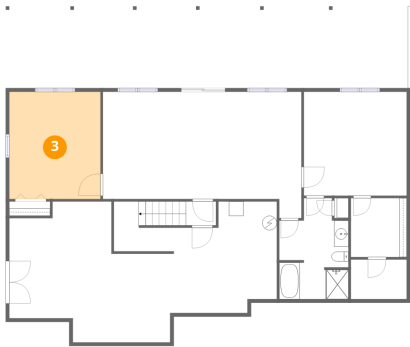


Dimensions: 9'6" x 13'10"
Area: 112 sq. ft
Counted as living area: Yes

Heated: Yes
Finished: Yes
Enclosed: Yes
Contiguous: Yes
Permitted: Yes
Wet space: Yes
Addition: No
Conversion: No

110 Club House Drive, North Shore, Moneta, Franklin County,
Virginia, United States, 24121

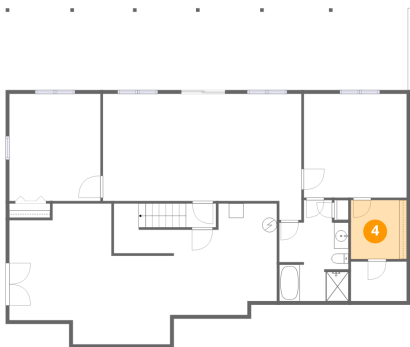
3 Floor 1 - Bedroom



Dimensions: 12'6" x 14'9"
Area: 184 sq. ft
Counted as living area: Yes

Heated: Yes
Finished: Yes
Enclosed: Yes
Contiguous: Yes
Permitted: Yes
Wet space: No
Addition: No
Conversion: No

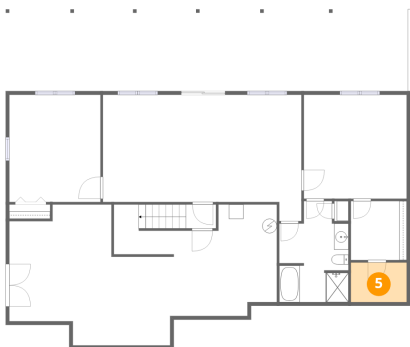
4 Floor 1 - W.I.C.



Dimensions: 7'8" x 8'1"
Area: 62 sq. ft
Counted as living area: Yes

Heated: Yes
Finished: Yes
Enclosed: Yes
Contiguous: Yes
Permitted: Yes
Wet space: No
Addition: No
Conversion: No

5 Floor 1 - Storage

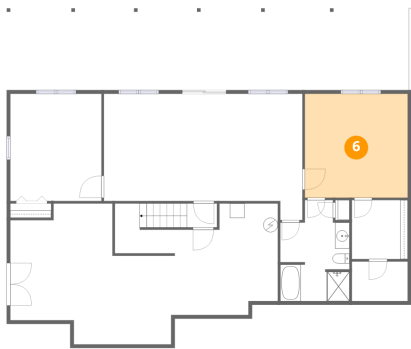


Dimensions: 7'8" x 5'5"
Area: 42 sq. ft
Counted as living area: No

Heated: No
Finished: No
Enclosed: No
Contiguous: No
Permitted: Yes
Wet space: No
Addition: No
Conversion: No

110 Club House Drive, North Shore, Moneta, Franklin County,
Virginia, United States, 24121

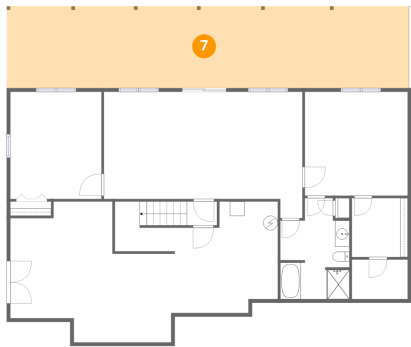
6 Floor 1 - Bedroom



Dimensions: 14'2" x 14'3"
Area: 202 sq. ft
Counted as living area: Yes

Heated: Yes
Finished: Yes
Enclosed: Yes
Contiguous: Yes
Permitted: Yes
Wet space: No
Addition: No
Conversion: No

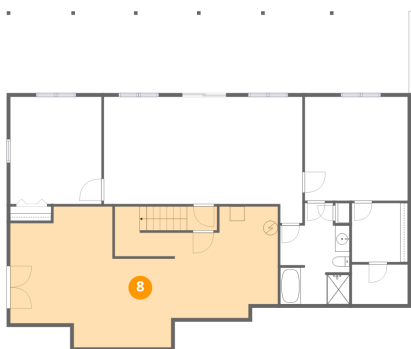
7 Floor 1 - Covered Patio



Dimensions: 55'3" x 11'3"
Area: 621 sq. ft
Counted as living area: No

Heated: No
Finished: No
Enclosed: No
Contiguous: Yes
Permitted: Yes
Wet space: No
Addition: No
Conversion: No

8 Floor 1 - Basement



Dimensions: 36'9" x 19'4"
Area: 592 sq. ft
Counted as living area: No

Heated: Yes
Finished: No
Enclosed: Yes
Contiguous: Yes
Permitted: Yes
Wet space: No
Addition: No
Conversion: No

110 Club House Drive, North Shore, Moneta, Franklin County,
Virginia, United States, 24121

9 Floor 2 - Hall



Dimensions: 11'9" x 3'10"
Area: 45 sq. ft
Counted as living area: Yes

Heated: Yes
Finished: Yes
Enclosed: Yes
Contiguous: Yes
Permitted: Yes
Wet space: No
Addition: No
Conversion: No

10 Floor 2 - W.I.C.



Dimensions: 5'4" x 5'7"
Area: 30 sq. ft
Counted as living area: Yes

Heated: Yes
Finished: Yes
Enclosed: Yes
Contiguous: Yes
Permitted: Yes
Wet space: No
Addition: No
Conversion: No

11 Floor 2 - Bedroom

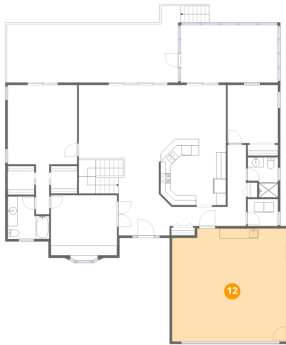


Dimensions: 10'2" x 11'8"
Area: 119 sq. ft
Counted as living area: Yes

Heated: Yes
Finished: Yes
Enclosed: Yes
Contiguous: Yes
Permitted: Yes
Wet space: No
Addition: No
Conversion: No

110 Club House Drive, North Shore, Moneta, Franklin County,
Virginia, United States, 24121

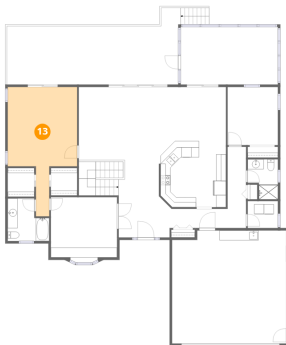
12 Floor 2 - Garage



Dimensions: 23'1" x 22'10"
Area: 517 sq. ft
Counted as living area: No

Heated: No
Finished: No
Enclosed: Yes
Contiguous: Yes
Permitted: Yes
Wet space: No
Addition: No
Conversion: No

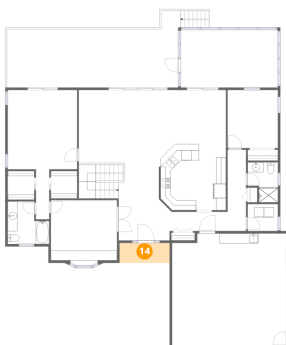
13 Floor 2 - Primary Bedroom



Dimensions: 14'0" x 26'1"
Area: 252 sq. ft
Counted as living area: Yes

Heated: Yes
Finished: Yes
Enclosed: Yes
Contiguous: Yes
Permitted: Yes
Wet space: No
Addition: No
Conversion: No

14 Floor 2 - Porch

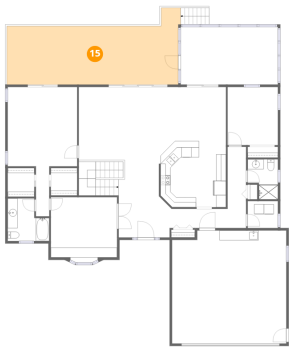


Dimensions: 10'1" x 4'0"
Area: 41 sq. ft
Counted as living area: No

Heated: No
Finished: No
Enclosed: No
Contiguous: Yes
Permitted: Yes
Wet space: No
Addition: No
Conversion: No

110 Club House Drive, North Shore, Moneta, Franklin County,
Virginia, United States, 24121

15 Floor 2 - Deck



Dimensions: 34'7" x 15'6"
Area: 423 sq. ft
Counted as living area: No

Heated: No
Finished: No
Enclosed: No
Contiguous: Yes
Permitted: Yes
Wet space: No
Addition: No
Conversion: No

16 Floor 2 - Foyer



Dimensions: 10'4" x 15'8"
Area: 201 sq. ft
Counted as living area: Yes

Heated: Yes
Finished: Yes
Enclosed: Yes
Contiguous: Yes
Permitted: Yes
Wet space: No
Addition: No
Conversion: No

17 Floor 2 - Living Room



Dimensions: 16'2" x 14'9"
Area: 239 sq. ft
Counted as living area: Yes

Heated: Yes
Finished: Yes
Enclosed: Yes
Contiguous: Yes
Permitted: Yes
Wet space: No
Addition: No
Conversion: No

110 Club House Drive, North Shore, Moneta, Franklin County,
Virginia, United States, 24121

18 Floor 2 - Bath



Dimensions: 8'5" x 8'7"
Area: 60 sq. ft
Counted as living area: Yes

Heated: Yes
Finished: Yes
Enclosed: Yes
Contiguous: Yes
Permitted: Yes
Wet space: Yes
Addition: No
Conversion: No

19 Floor 2 - Dining Area



Dimensions: 13'6" x 10'11"
Area: 148 sq. ft
Counted as living area: Yes

Heated: Yes
Finished: Yes
Enclosed: Yes
Contiguous: Yes
Permitted: Yes
Wet space: No
Addition: No
Conversion: No

20 Floor 2 - Kitchen

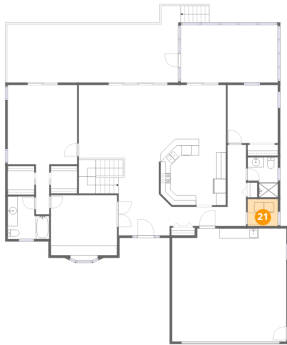


Dimensions: 13'6" x 13'4"
Area: 175 sq. ft
Counted as living area: Yes

Heated: Yes
Finished: Yes
Enclosed: Yes
Contiguous: Yes
Permitted: Yes
Wet space: No
Addition: No
Conversion: No

110 Club House Drive, North Shore, Moneta, Franklin County,
Virginia, United States, 24121

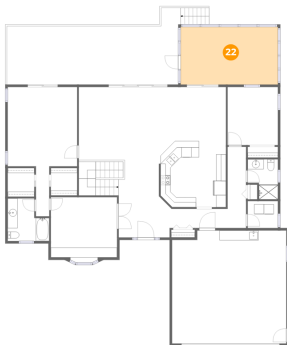
21 Floor 2 - Laundry



Dimensions: 6'1" x 5'5"
Area: 33 sq. ft
Counted as living area: Yes

Heated: Yes
Finished: Yes
Enclosed: Yes
Contiguous: Yes
Permitted: Yes
Wet space: No
Addition: No
Conversion: No

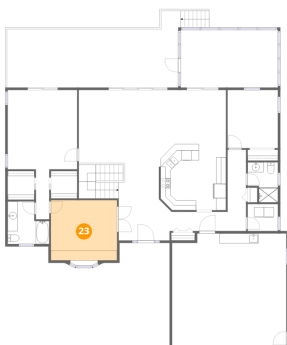
22 Floor 2 - Screened Porch



Dimensions: 19'8" x 11'7"
Area: 229 sq. ft
Counted as living area: No

Heated: No
Finished: No
Enclosed: No
Contiguous: Yes
Permitted: Yes
Wet space: No
Addition: No
Conversion: No

23 Floor 2 - Office

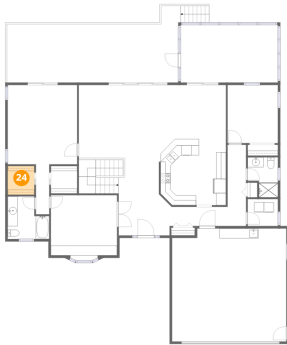


Dimensions: 13'5" x 12'2"
Area: 163 sq. ft
Counted as living area: Yes

Heated: Yes
Finished: Yes
Enclosed: Yes
Contiguous: Yes
Permitted: Yes
Wet space: No
Addition: No
Conversion: No

110 Club House Drive, North Shore, Moneta, Franklin County,
Virginia, United States, 24121

24 Floor 2 - W.I.C.



Dimensions: 5'5" x 5'10"
Area: 31 sq. ft
Counted as living area: Yes

Heated: Yes
Finished: Yes
Enclosed: Yes
Contiguous: Yes
Permitted: Yes
Wet space: No
Addition: No
Conversion: No

25 Floor 2 - Bath



Dimensions: 6'1" x 8'1"
Area: 42 sq. ft
Counted as living area: Yes

Heated: Yes
Finished: Yes
Enclosed: Yes
Contiguous: Yes
Permitted: Yes
Wet space: Yes
Addition: No
Conversion: No

26 Floor 2 - Hall



Dimensions: 3'9" x 16'5"
Area: 61 sq. ft
Counted as living area: Yes

Heated: Yes
Finished: Yes
Enclosed: Yes
Contiguous: Yes
Permitted: Yes
Wet space: No
Addition: No
Conversion: No